

## Flutracking Interim Weekly Report

### Week #30 - ending 1 August 2010

**Summary: There is a possible early indication of increased influenza-like illness in unvaccinated participants.**

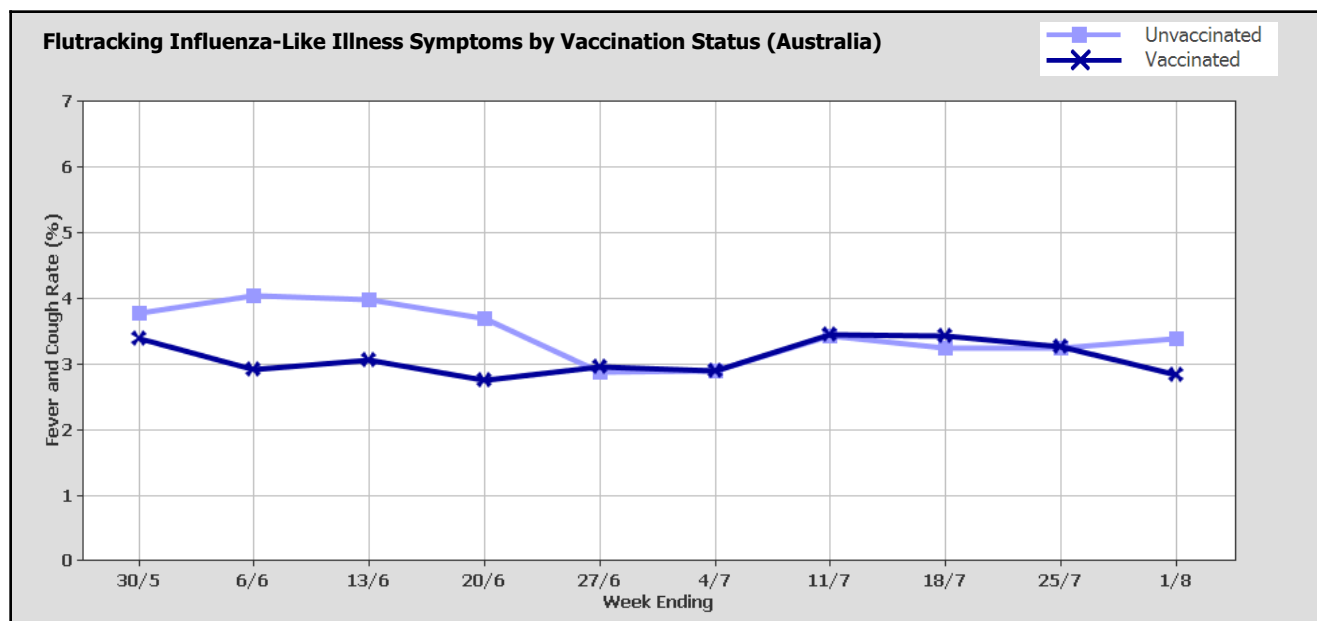
This survey was sent on Monday 2 August 7:59 AM and by Thursday 5 August 9:00 AM we had received 9305 responses (9139 last week) from 6566 people responding for themselves and 2739 household members across Australia.

#### Respondent Numbers by Jurisdiction

State/Territory	Respondents	Percentage
NSW	2899	31.2%
VIC	892	9.6%
QLD	987	10.6%
SA	2450	26.3%
WA	392	4.2%
TAS	1185	12.7%
NT	280	3.0%
ACT	220	2.4%
<b>Totals</b>	<b>9305</b>	<b>100.0%</b>

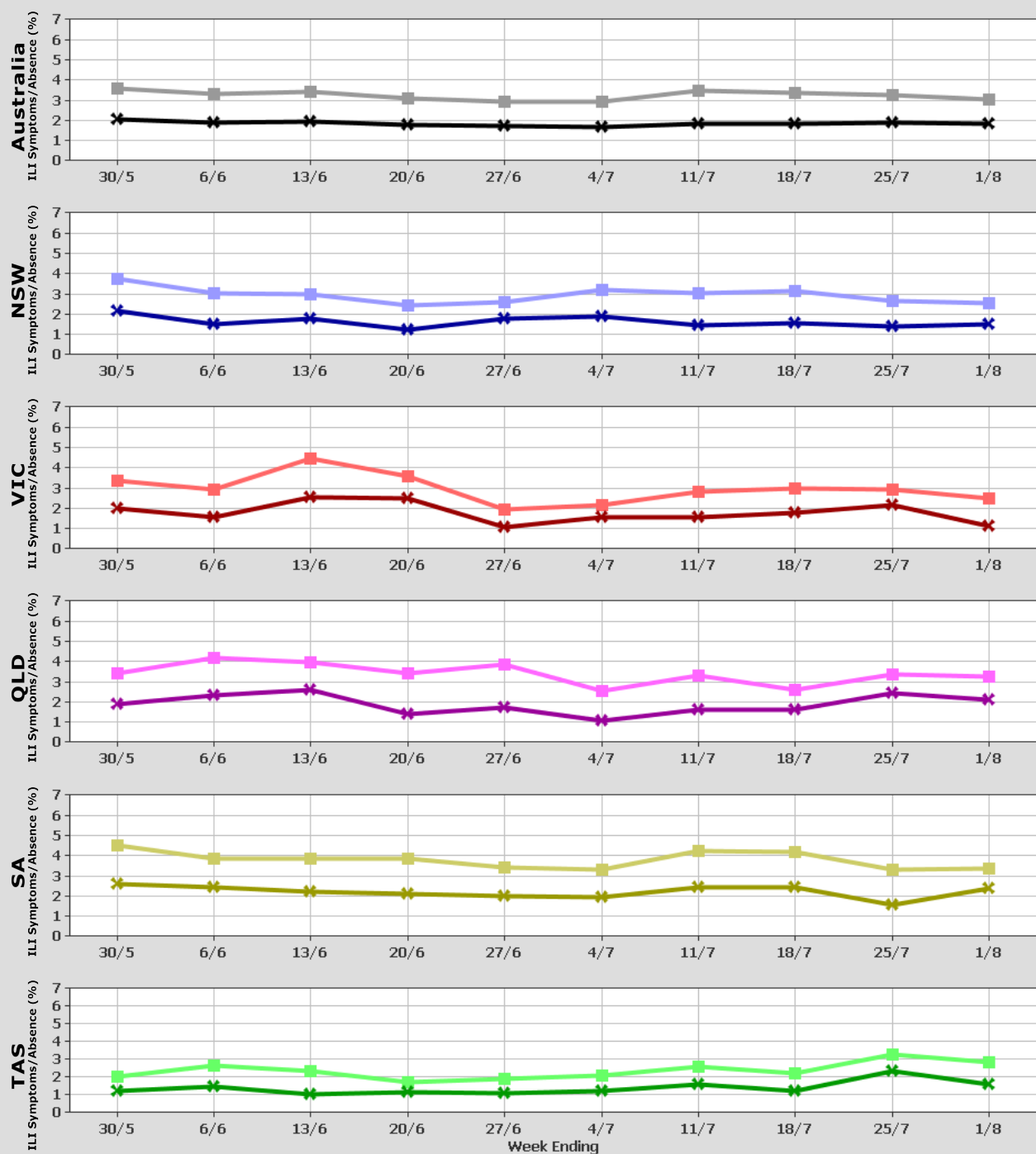
We are now comparing symptom rates for participants who were not vaccinated for influenza and participants who were vaccinated with either the seasonal trivalent influenza vaccine or the monovalent H1N1 pandemic vaccine. Across Australia, fever and cough was reported by 2.8% of vaccinated participants and 3.4% of unvaccinated participants. Fever, cough and absence from normal duties was reported by 1.8% of participants.

For participants this week, 6013/9305 (64.6%) have received the monovalent and/or the 2010 seasonal vaccine so far. Of the 2145 participants who identified as working face-to-face with patients, 1695 (79.0%) have received one or both of these vaccines.



# Flutracking Influenza-Like Illness Symptoms and Absence from Normal Duties

■ Fever and Cough  
✕ Fever, Cough and Absence



To see latest maps of influenza-like illness activity:

[www.flutracking.net/maps.php](http://www.flutracking.net/maps.php)

To join the survey or find out more information:

[www.flutracking.net](http://www.flutracking.net)

Contact the Flutracking Team on (02) 4924 6477 or:

[flutracking@hnehealth.nsw.gov.au](mailto:flutracking@hnehealth.nsw.gov.au)

Previous Reports: <http://www1.hnehealth.nsw.gov.au/Hneph/HnephApplications/FluSurvey/Reports.cfm>