

## Flutracking Interim Weekly Report

### Week #40 - ending 10 October 2010

**Summary: Influenza-like activity is returning to baseline levels suggesting the influenza season is over.**

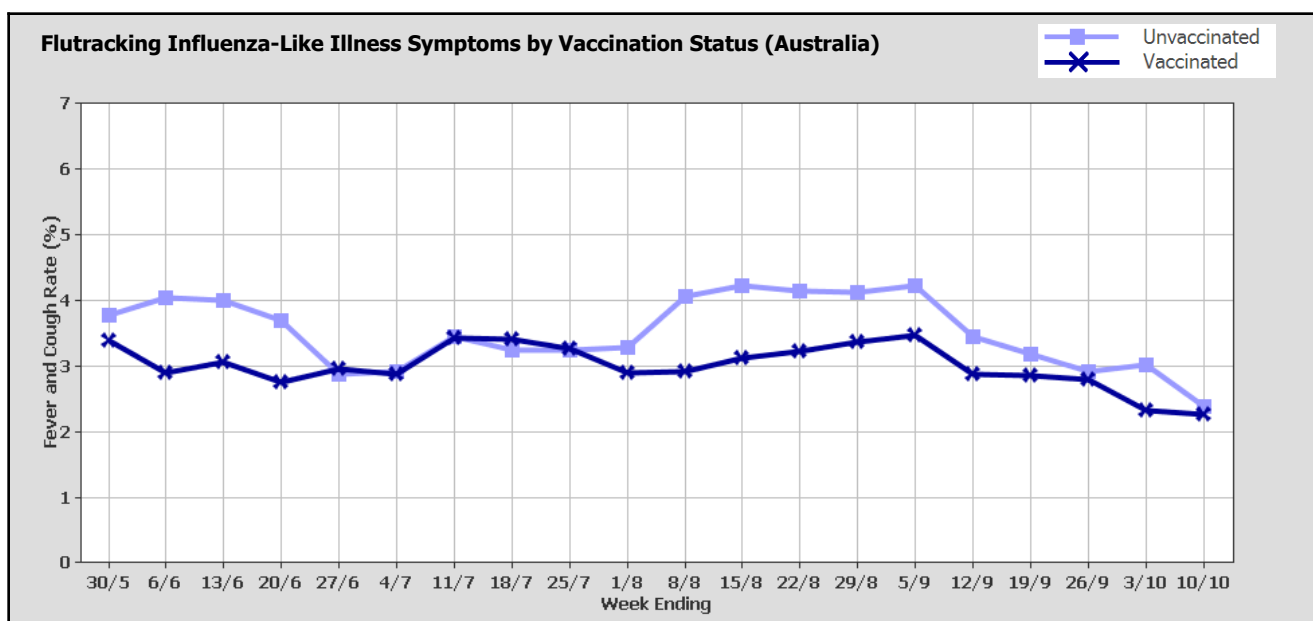
This survey was sent on Monday 11 October 2:44 AM and by Thursday 14 October 9:00 AM we had received 8951 responses (8755 last week) from 6420 people responding for themselves and 2531 household members across Australia.

#### Respondent Numbers by Jurisdiction

State/Territory	Respondents	Percentage
NSW	2526	28.2%
VIC	1326	14.8%
QLD	904	10.1%
SA	2259	25.2%
WA	374	4.2%
TAS	1117	12.5%
NT	265	3.0%
ACT	180	2.0%
<b>Totals</b>	<b>8951</b>	<b>100.0%</b>

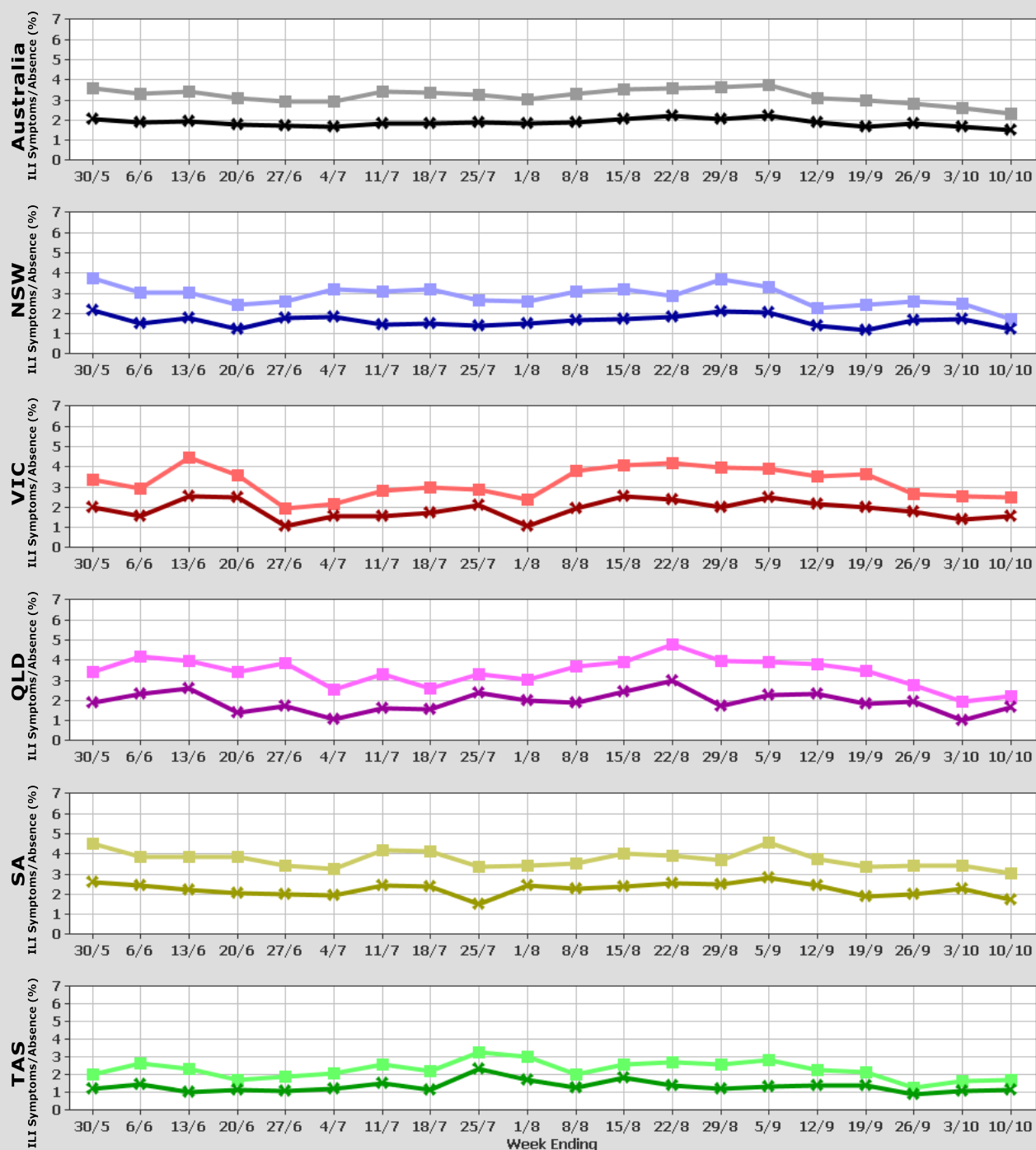
We are now comparing symptom rates for participants who were not vaccinated for influenza and participants who were vaccinated with either the seasonal trivalent influenza vaccine or the monovalent H1N1 pandemic vaccine. In the graphs below it can be seen that fever and cough rates have returned to baseline levels at the national and jurisdictional level.

For participants this week, 5831/8951 (65.1%) have received the monovalent and/or the 2010 seasonal vaccine so far. Of the 1989 participants who identified as working face-to-face with patients, 1559 (78.4%) have received one or both of these vaccines.



# Flutracking Influenza-Like Illness Symptoms and Absence from Normal Duties

■ Fever and Cough  
✕ Fever, Cough and Absence



To see latest maps of influenza-like illness activity:

[www.flutracking.net/maps.php](http://www.flutracking.net/maps.php)

To join the survey or find out more information:

[www.flutracking.net](http://www.flutracking.net)

Contact the Flutracking Team on (02) 4924 6477 or:

[flutracking@hnehealth.nsw.gov.au](mailto:flutracking@hnehealth.nsw.gov.au)

Previous Reports: <http://www1.hnehealth.nsw.gov.au/HnepH/HnepHApplications/FluSurvey/Reports.cfm>