

## Flutracking Interim Weekly Report

### Week #41 - ending 17 October 2010

**Summary: Influenza-like activity is returning to baseline levels suggesting the influenza season is over.**

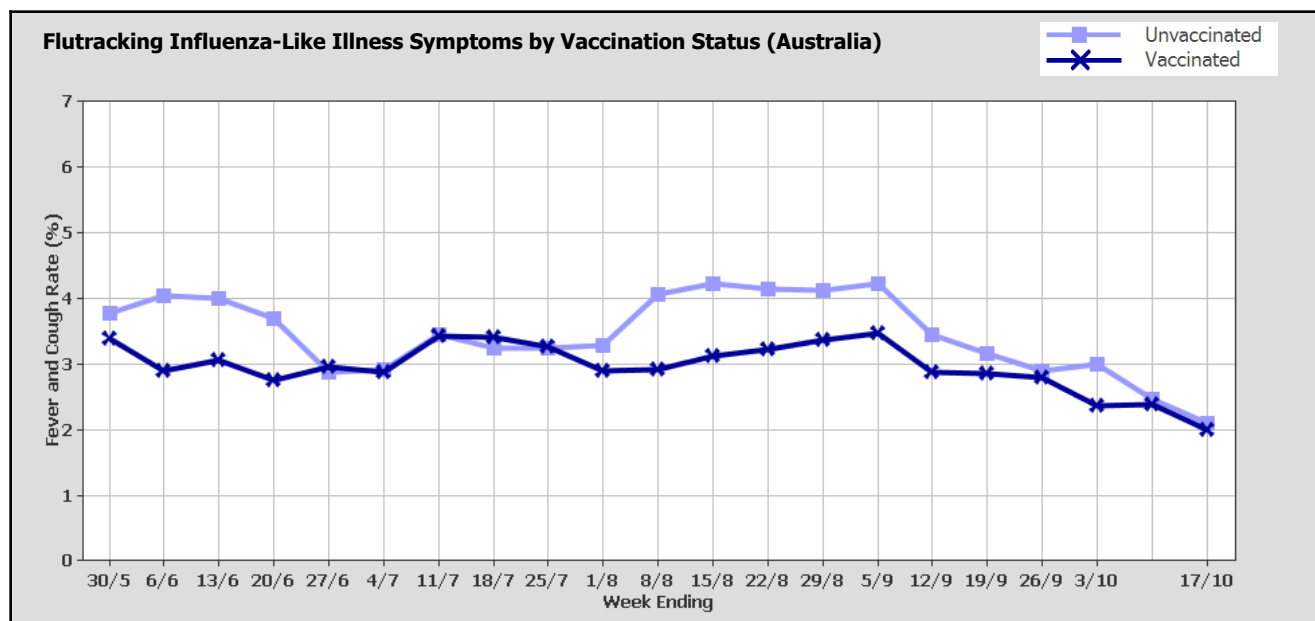
This survey was sent on Monday 18 October 2:36 AM and by Thursday 21 October 9:00 AM we had received 9109 responses (8953 last week) from 6559 people responding for themselves and 2550 household members across Australia.

#### Respondent Numbers by Jurisdiction



State/Territory	Respondents	Percentage
NSW	2674	29.4%
VIC	1315	14.4%
QLD	926	10.2%
SA	2261	24.8%
WA	361	4.0%
TAS	1104	12.1%
NT	276	3.0%
ACT	192	2.1%
<b>Totals</b>	<b>9109</b>	<b>100.0%</b>

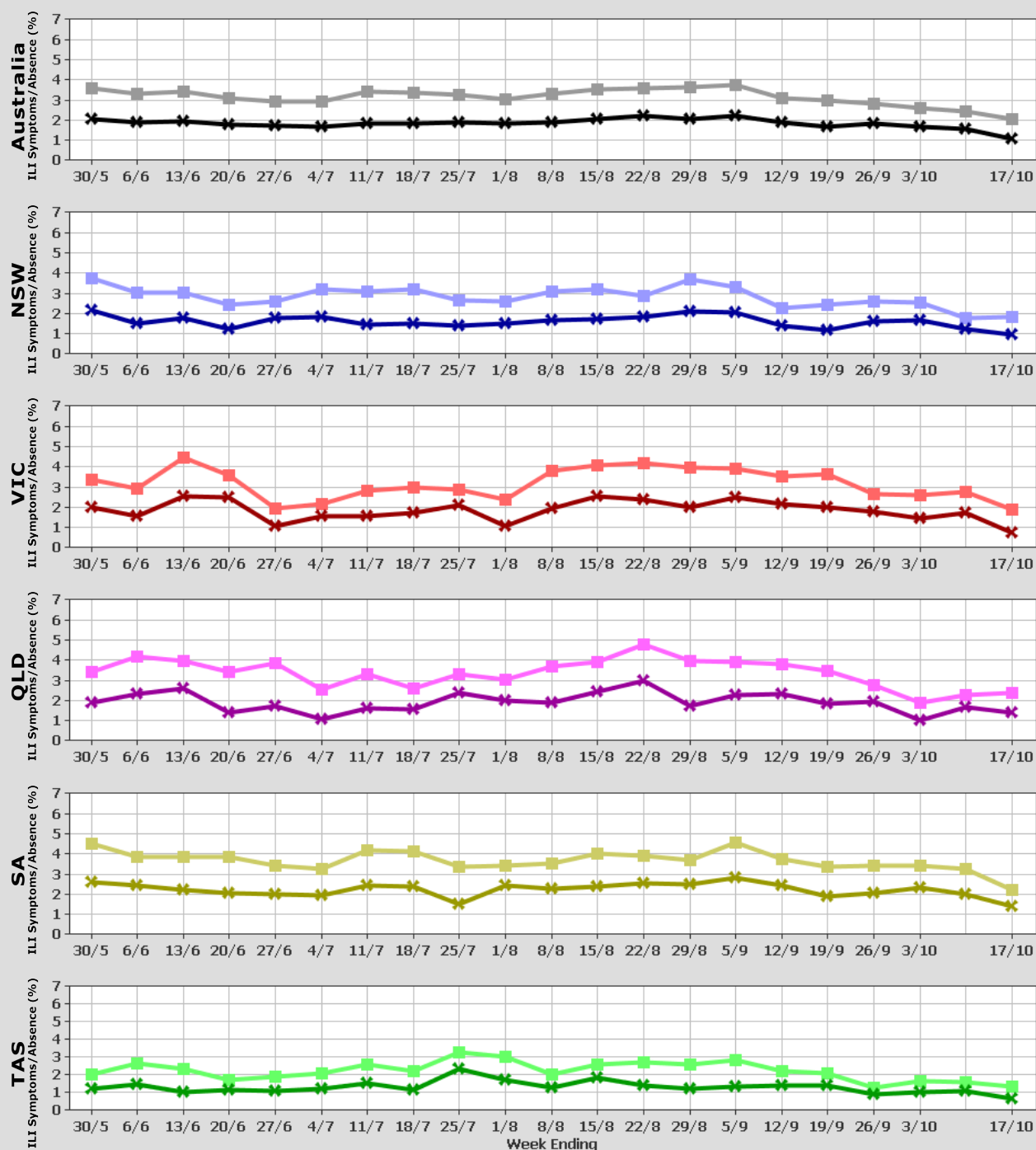
We are now comparing symptom rates for participants who were not vaccinated for influenza and participants who were vaccinated with either the seasonal trivalent influenza vaccine or the monovalent H1N1 pandemic vaccine. Across Australia, fever and cough was reported by 2% of vaccinated participants and 2.1% of unvaccinated participants. Fever, cough and absence from normal duties was reported by 1% of vaccinated participants and 1.1% of unvaccinated participants.

For participants this week, 5904/9109 (64.8%) have received the monovalent and/or the 2010 seasonal vaccine so far. Of the 2059 participants who identified as working face-to-face with patients, 1596 (77.5%) have received one or both of these vaccines.



# Flutracking Influenza-Like Illness Symptoms and Absence from Normal Duties

 Fever and Cough  
 Fever, Cough and Absence



To see latest maps of influenza-like illness activity:

[www.flutracking.net/maps.php](http://www.flutracking.net/maps.php)

To join the survey or find out more information:

[www.flutracking.net](http://www.flutracking.net)

Contact the Flutracking Team on (02) 4924 6477 or:

[flutracking@hnehealth.nsw.gov.au](mailto:flutracking@hnehealth.nsw.gov.au)

Previous Reports: <http://www1.hnehealth.nsw.gov.au/Hneph/HnephApplications/FluSurvey/Reports.cfm>