

## Final Report for 2012 - 1st 2013 Report Next Week

### Week #24 - ending 14 October 2012

2012 was a moderate influenza year. Flutracking participants will receive a link to the first report for 2013 (result of survey on 29/4) in the 2nd survey of the year on 6th May, 2013

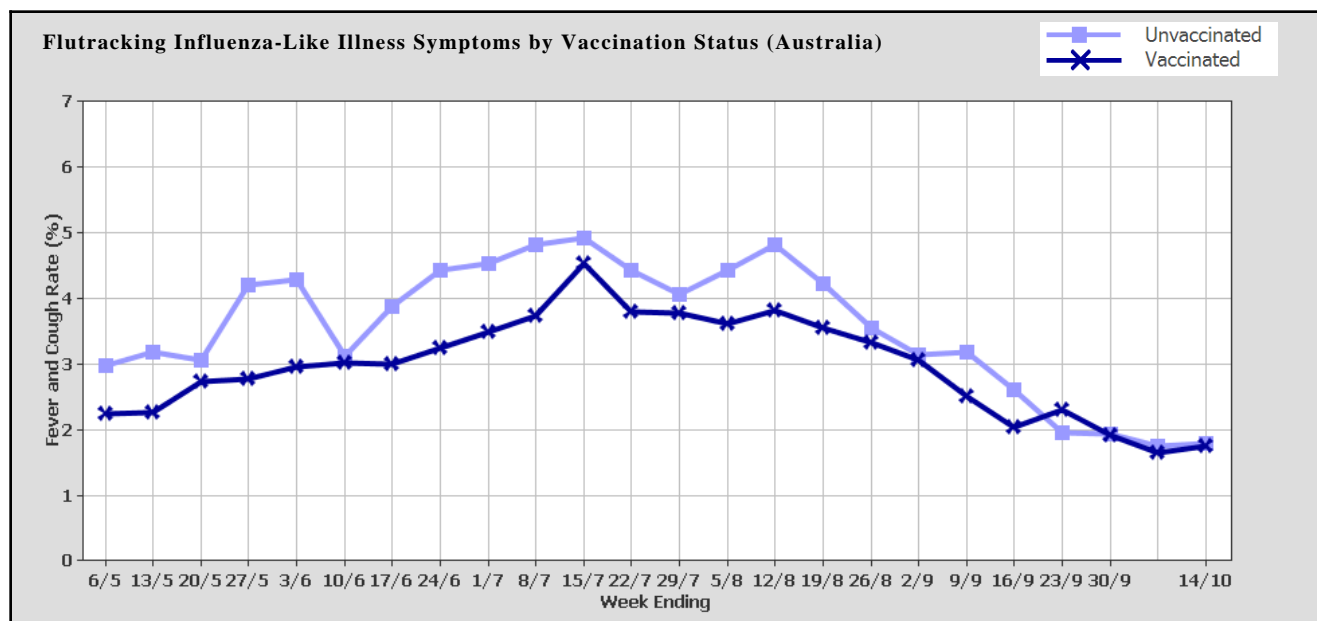
This survey was sent on Monday 15 October 12:07 AM and by Wednesday 17 October 9:00 AM we had received 12105 responses (11459 last week) from 7873 people responding for themselves and 4232 household members across Australia.

#### Respondent Numbers by Jurisdiction

State/Territory	Respondents	Percentage
NSW	3917	32.4%
VIC	1769	14.6%
QLD	1197	9.9%
SA	2175	18.0%
WA	684	5.7%
TAS	1547	12.8%
NT	486	4.0%
ACT	330	2.7%
<b>Totals</b>	<b>12105</b>	<b>100.0%</b>

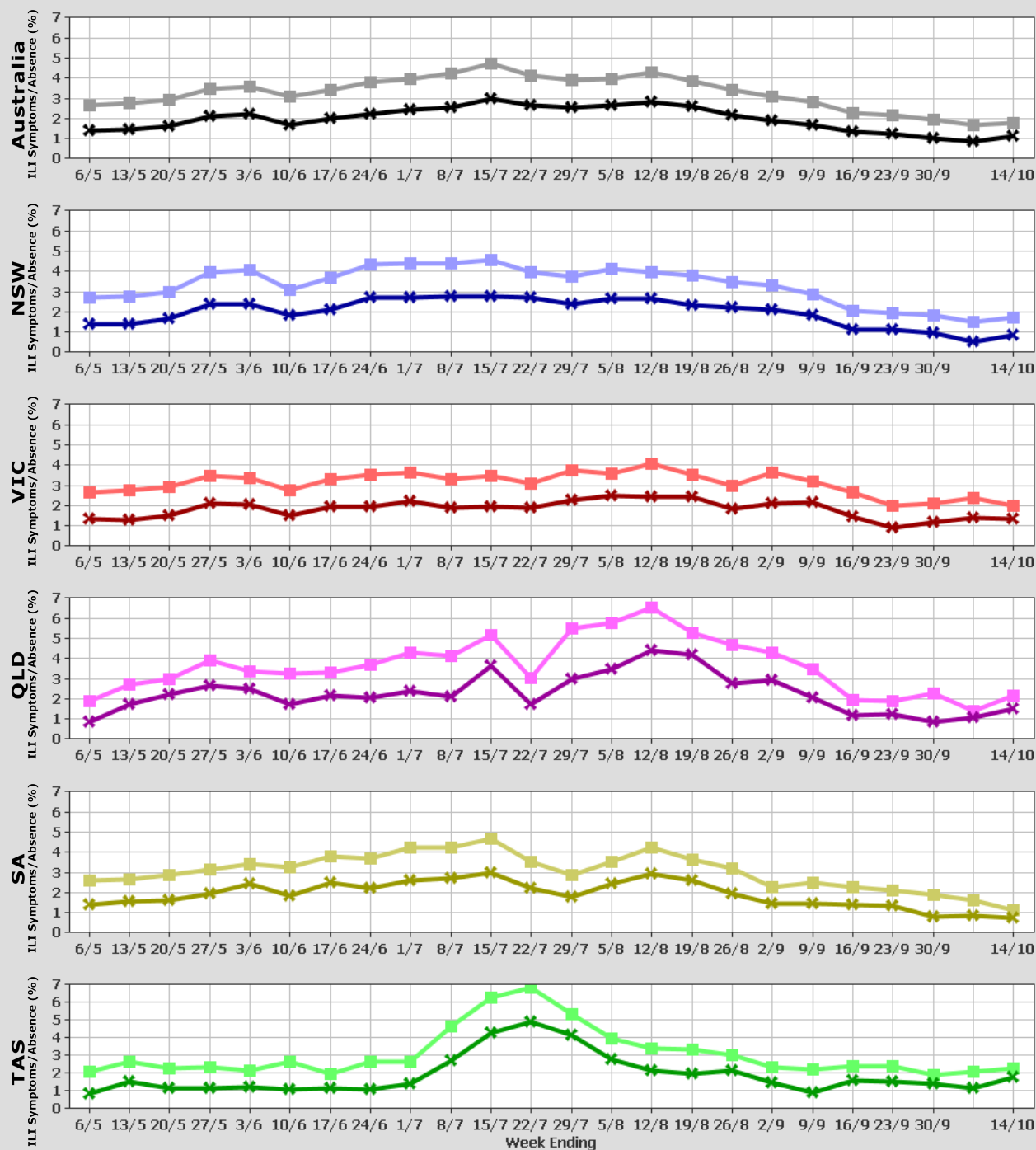
Across Australia, fever and cough was reported by 1.8% of vaccinated participants and 1.8% of unvaccinated participants. Fever, cough and absence from normal duties was reported by 1.0% of vaccinated participants and 1.2% of unvaccinated participants.

For participants this week, 6560/12105 (54.2%) have received the seasonal vaccine so far. Of the 2458 participants who identified as working face-to-face with patients, 1804 (73.4%) have received the vaccine.



# Flutracking Influenza-Like Illness Symptoms and Absence from Normal Duties

■ Fever and Cough  
✕ Fever, Cough and Absence



To see latest maps of influenza-like illness activity:

[www.flutracking.net/maps.php](http://www.flutracking.net/maps.php)

To join the survey or find out more information:

[www.flutracking.net](http://www.flutracking.net)

Contact the Flutracking Team on (02) 4924 6477 or:

[flutracking@flutracking.net](mailto:flutracking@flutracking.net)

Previous Reports: <http://www.flutracking.net/survey/Reports.cfm>