



FluTracking

Weekly Interim Report: Australia

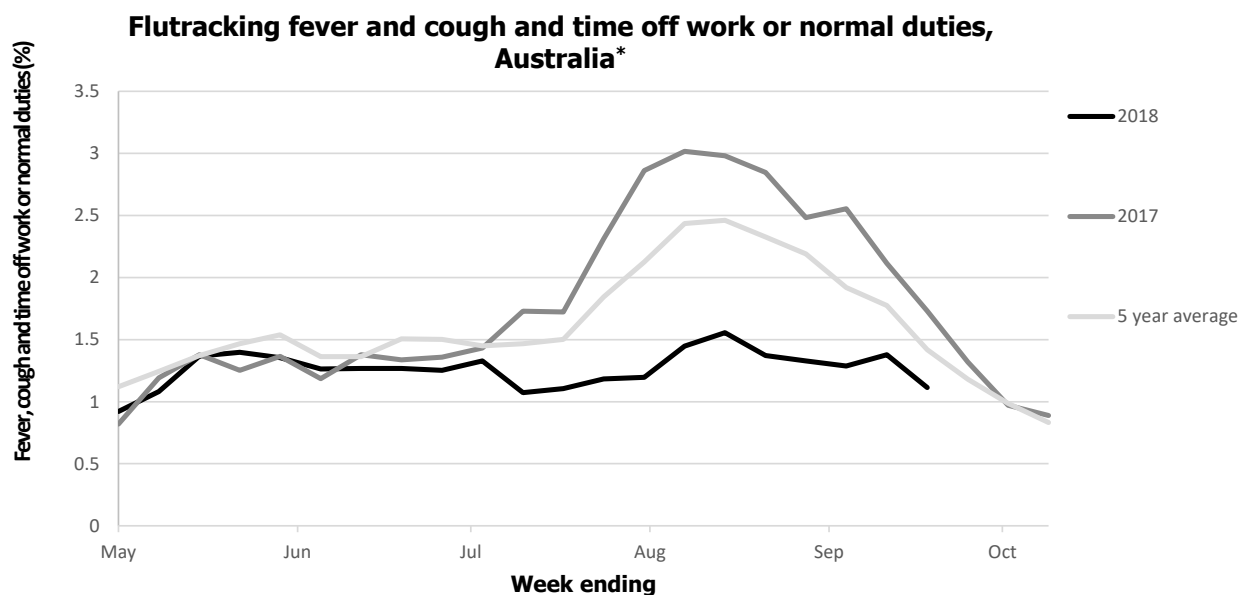
Week ending 23 September 2018

(Data received up to 09:00 AM, Thursday 27 September)

Low levels of influenza-like illness activity

32,514 participants this week

Flu Symptom Activity: low levels of flu -like symptoms: Fever, cough & time off: 1.1% (1.7% this time last year, lower than 5 year average)



* Data are age standardised in this chart only

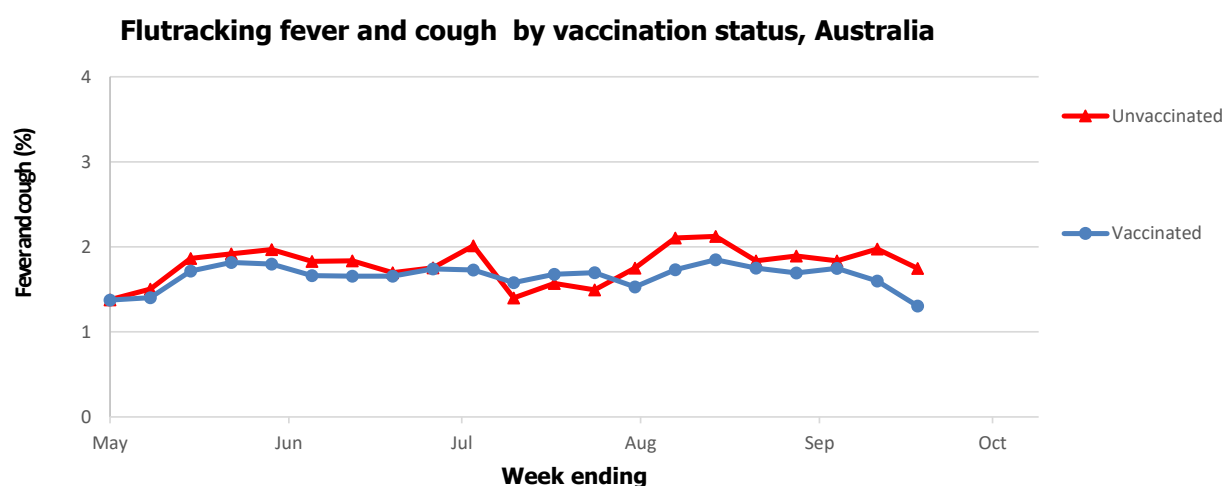
Flu symptom Severity: 24.9% participants sought medical advice

Influenza-like illness Severity	Week ending 16 September 2018	Week ending 23 September 2018
	# (%)	# (%)
Number of participants	33034 (100%)	32514 (100%)
Fever & cough	562 (1.7%)	469 (1.4%)
Fever, cough & time-off normal duties	372 (1.1%)	300 (0.9%)
Fever, cough & 3 or more days off work or normal duties	207 (0.6%)	143 (0.4%)
Number of participants with fever and cough	562 (100%)	469 (100%)
*Sought medical advice for fever and cough	194 (34.5%)	117 (24.9%)
Diagnosis of influenza	33 (5.9%)	21 (4.5%)
Admitted to hospital	3 (0.5%)	0 (0%)
Tested for influenza	19 (3.4%)	11 (2.3%)
Tested, result positive	4 (0.7%)	NP [^]

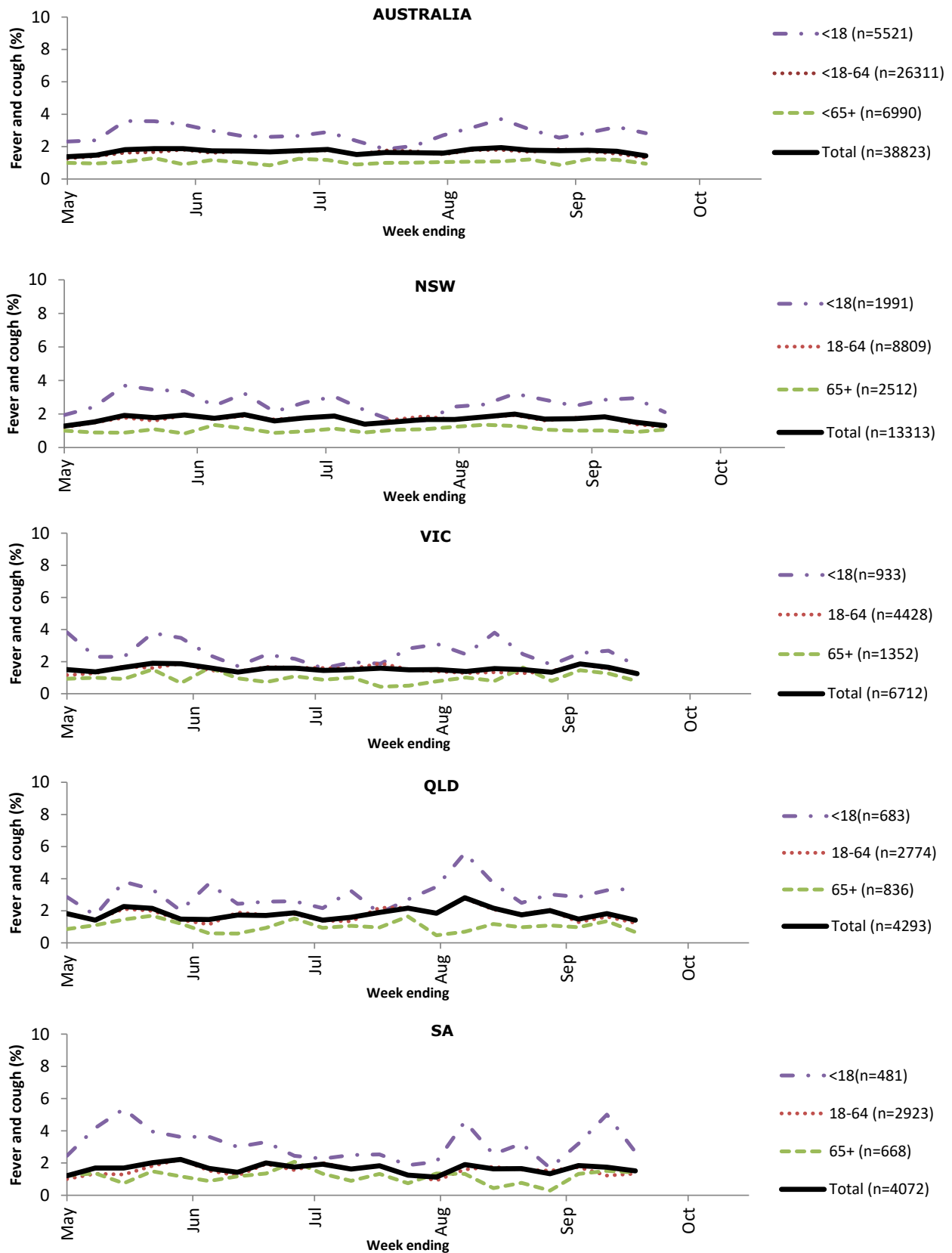
**Includes those who sought medical advice from a general practitioner, emergency department, or were admitted to hospital for fever & cough*

[^]Not Publishable

Flu Symptom Activity by vaccination status: 0.4% higher fever and cough in unvaccinated group



Flu activity by State/Territory and Age Group: illness highest in children & NT



WA

- - - <18 (n=630)
- . . . 18-64 (n=3164)
- - - 65+ (n=634)
- Total (n=4428)

TAS

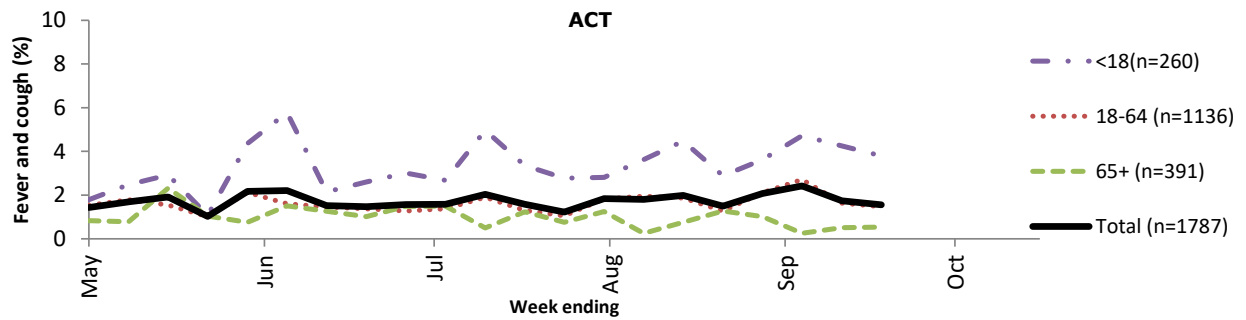
- - - <18 (n=417)
- . . . 18-64 (n=2282)
- - - 65+ (n=455)
- Total (n=3154)

NT

- - - <18 (n=128)
- . . . 18-64 (n=795)
- - - 65+ (n=142)
- Total (n=1065)

ACT

- - - <18 (n=260)
- . . . 18-64 (n=1136)
- - - 65+ (n=391)
- Total (n=1787)



Participation: 32,514 participants (33,034 last week)

State	Participants	%	Rate/100,000 population
NSW	11258	34.6%	142.6
VIC	5679	17.5%	89.3
QLD	3526	10.8%	71.3
SA	3502	10.8%	202.8
WA	3457	10.6%	133.6
TAS	2688	8.3%	514.9
NT	864	2.7%	351.1
ACT	1540	4.7%	373.2
AUS	32514	100.0%	131.6

Vaccination rates: 69.1%

Vaccinated participants:	%
<5 years	62.1
5-17 years	33.9
18-64 years	69.3
65+ years	87.6
Working with patients	84.9



FluTracking