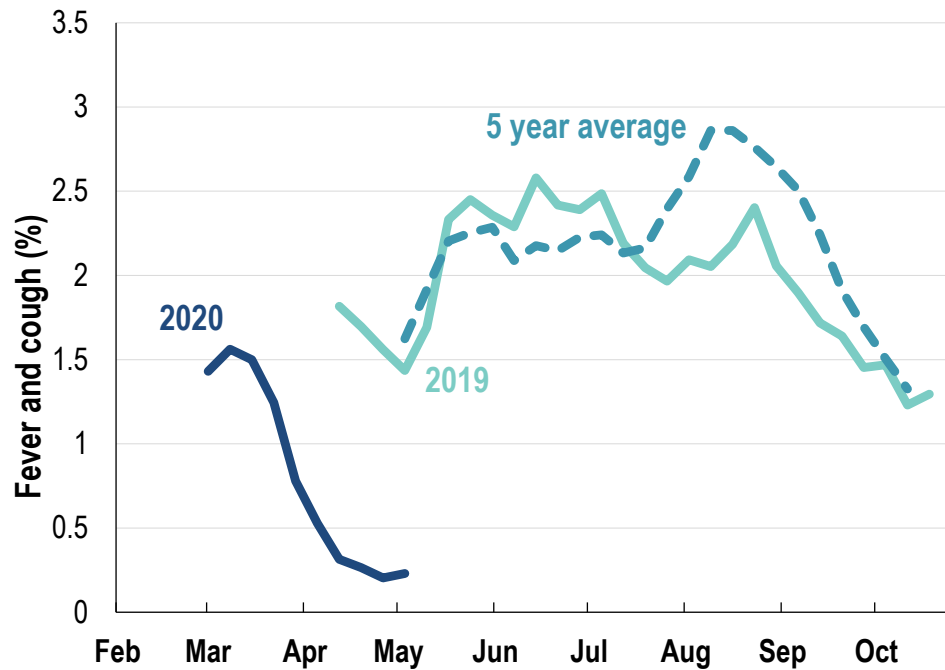




This week influenza-like illness activity is low
75,464 participants this week

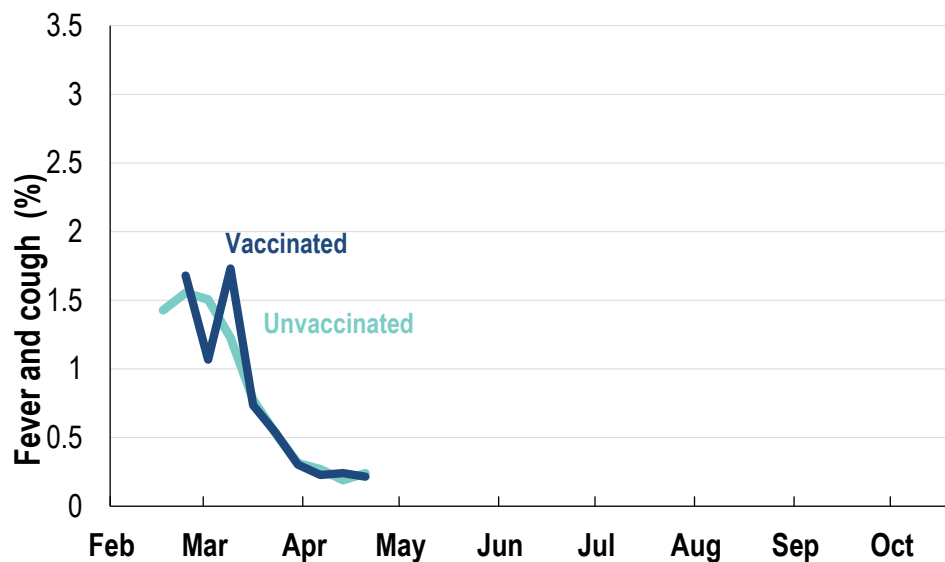
Influenza-like illness activity:

Fever and cough: 0.23% this week (flu-like illness activity is historically low)



*5 year average is calculated using 2015, 2016, 2017, 2018 and 2019 data
^ Data are age standardised in this chart

Influenza-like illness activity by vaccination status:

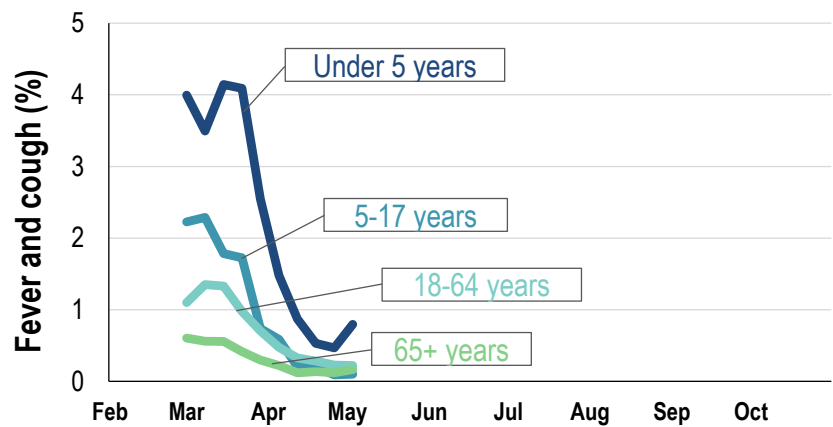


* Data are age standardised in this chart

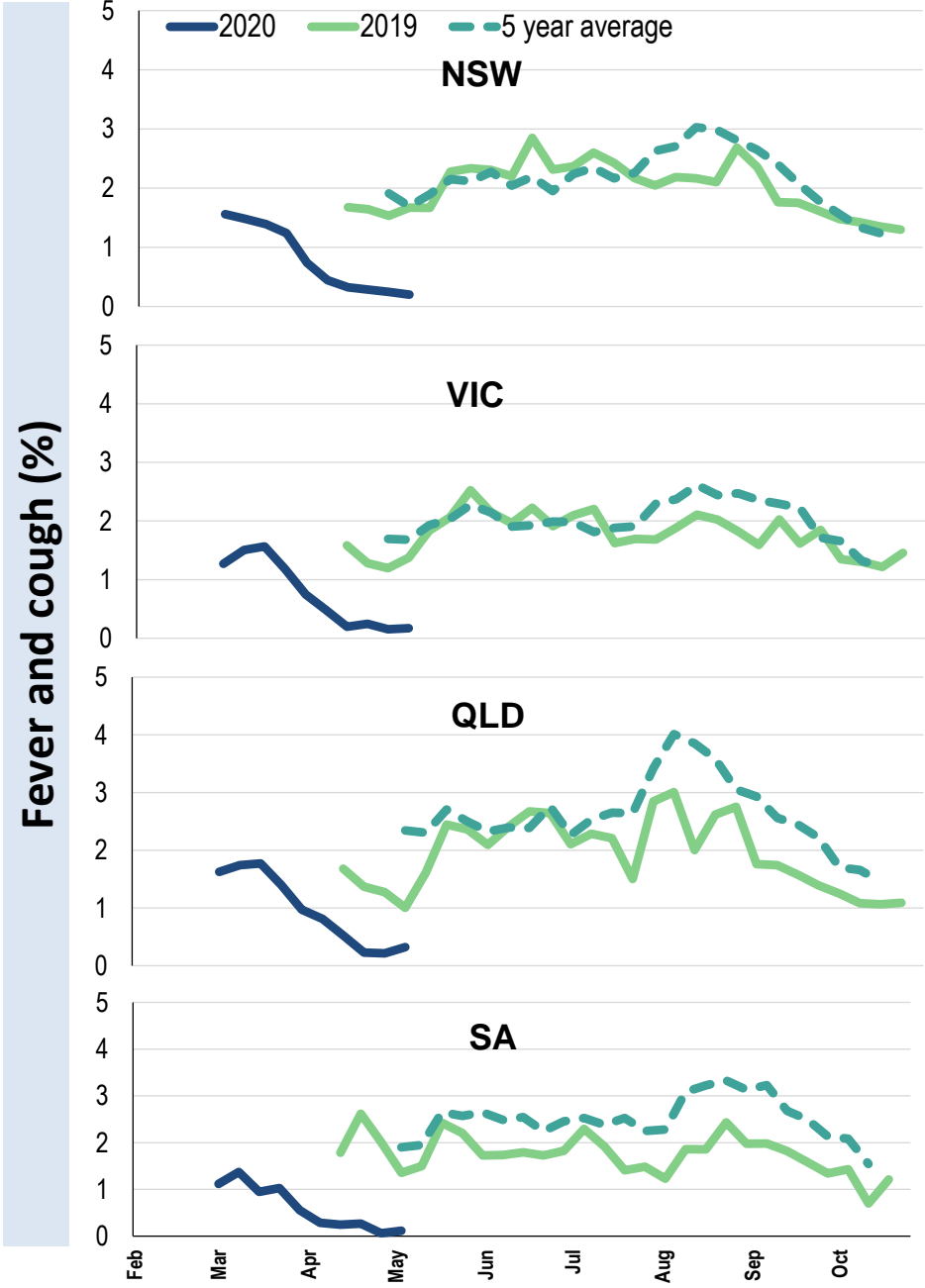
Influenza-like illness severity: 55% of participants with fever and cough sought medical advice this week		
Influenza-like illness Severity	Week ending 03 May 2020 number (%)	Week ending 26 April 2020 number (%)
Number of participants	75464 (100%)	75890 (100%)
Fever & cough	160 (0.2%)	144 (0.2%)
Fever, cough & time-off normal duties	73 (0.1%)	66 (0.1%)
Fever, cough & 3 or more days off work/normal duties	49 (0.1%)	37 (0%)
Number of participants with fever and cough	160 (100%)	144 (100%)
*Sought medical advice for fever and cough	88 (55%)	71 (49.3%)
Admitted to hospital	4 (2.5%)	4 (2.8%)
Tested for influenza	7 (4.4%)	13 (9%)
Tested, result positive for influenza	4 (2.5%)	4 (2.8%)
Tested for coronavirus (COVID-19)	71 (44.4%)	55 (38.2%)
Tested, result positive for coronavirus (COVID-19)	1 (0.6%)	0 (0%)

*Includes those who sought medical advice from a general practitioner, COVID-19 clinic, emergency department, or were admitted to hospital for fever & cough

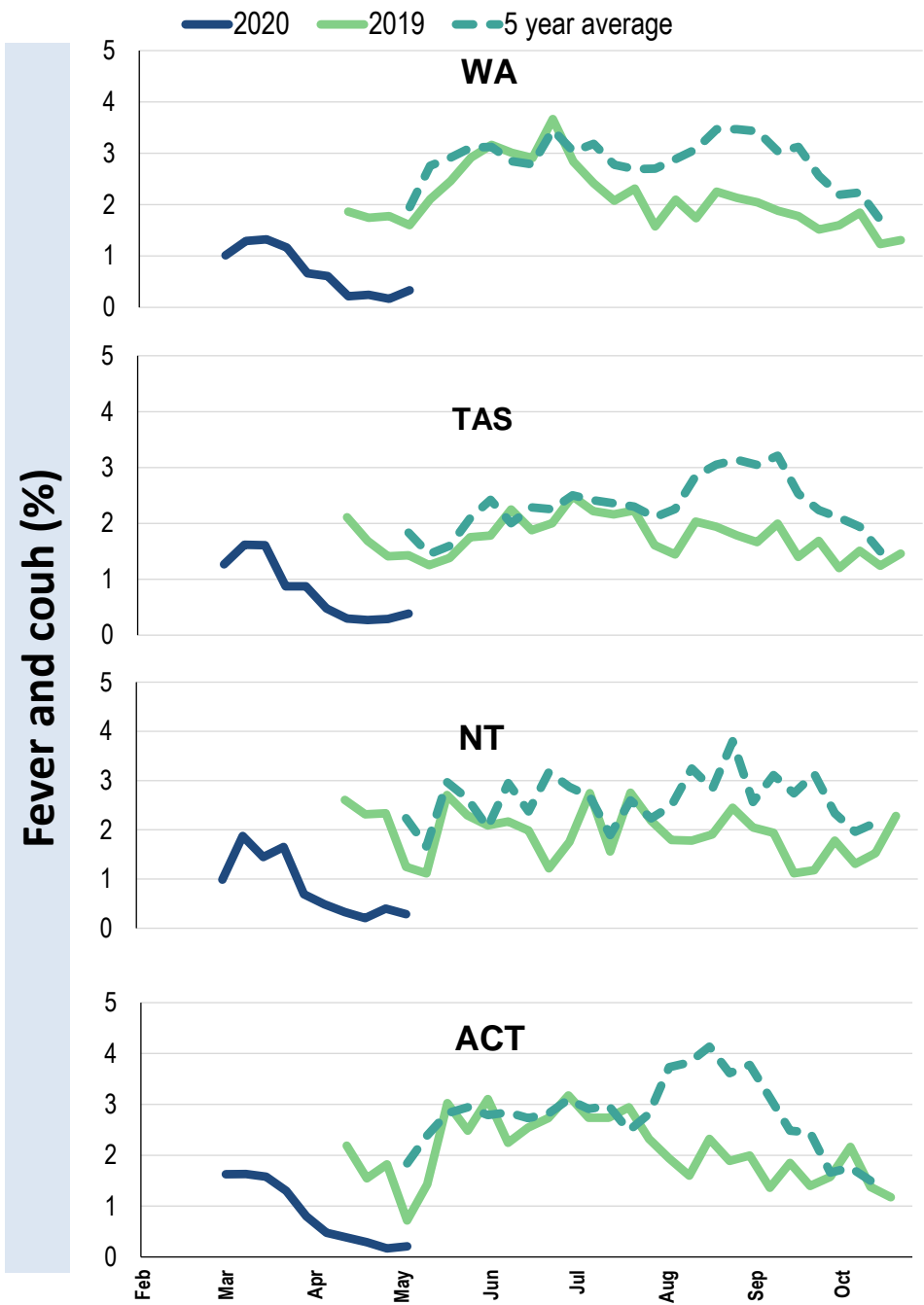
Influenza-like illness activity by age group (Australia):



Influenza-like illness activity by state/territory (age standardised):



Influenza-like illness activity by state/territory (age standardised):



Participation:

75,464 participants (75,890 last week)

State	Participants	%	Rate/100,000 population
NSW	25784	34.2%	326.6
VIC	15309	20.3%	240.7
QLD	9867	13.1%	199.4
SA	6670	8.8%	386.2
WA	8217	10.9%	317.6
TAS	4668	6.2%	894.3
NT	1128	1.5%	458.4
ACT	3821	5.1%	926.1
AUS	75464	100.0%	305.5

Vaccination rates:

Vaccination rates: 63.7% overall

Vaccinated participants:

	%
<5 years	48.8
5-17 years	40.0
18-64 years	62.0
65+ years	81.1
Working with patients	81.8



FluTracking
Tracking COVID-19