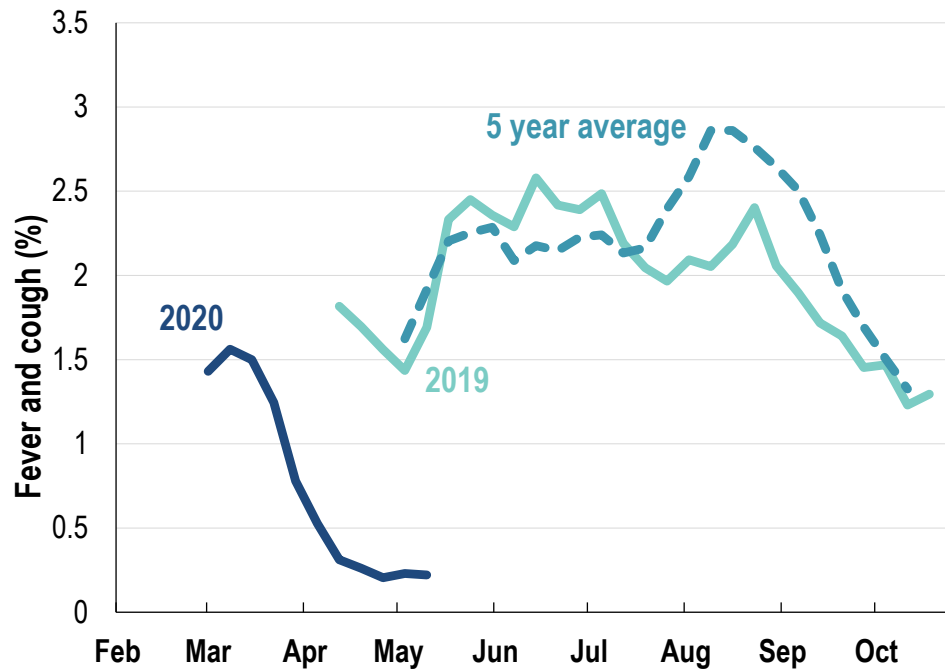




This week influenza-like illness activity is low 76,036 participants this week

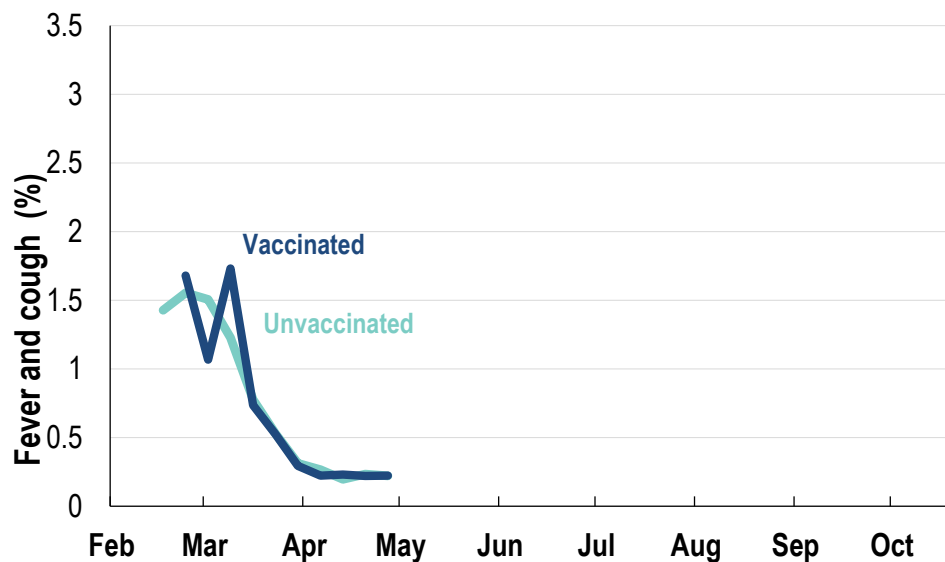
Influenza-like illness activity:

Fever and cough: 0.22% this week (flu-like illness activity is historically low)



*5 year average is calculated using 2015, 2016, 2017, 2018 and 2019 data
^ Data are age standardised in this chart

Influenza-like illness activity by vaccination status:

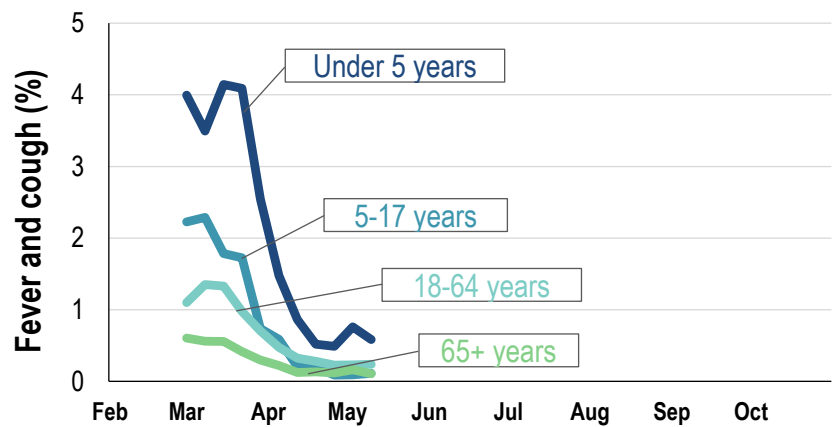


* Data are age standardised in this chart

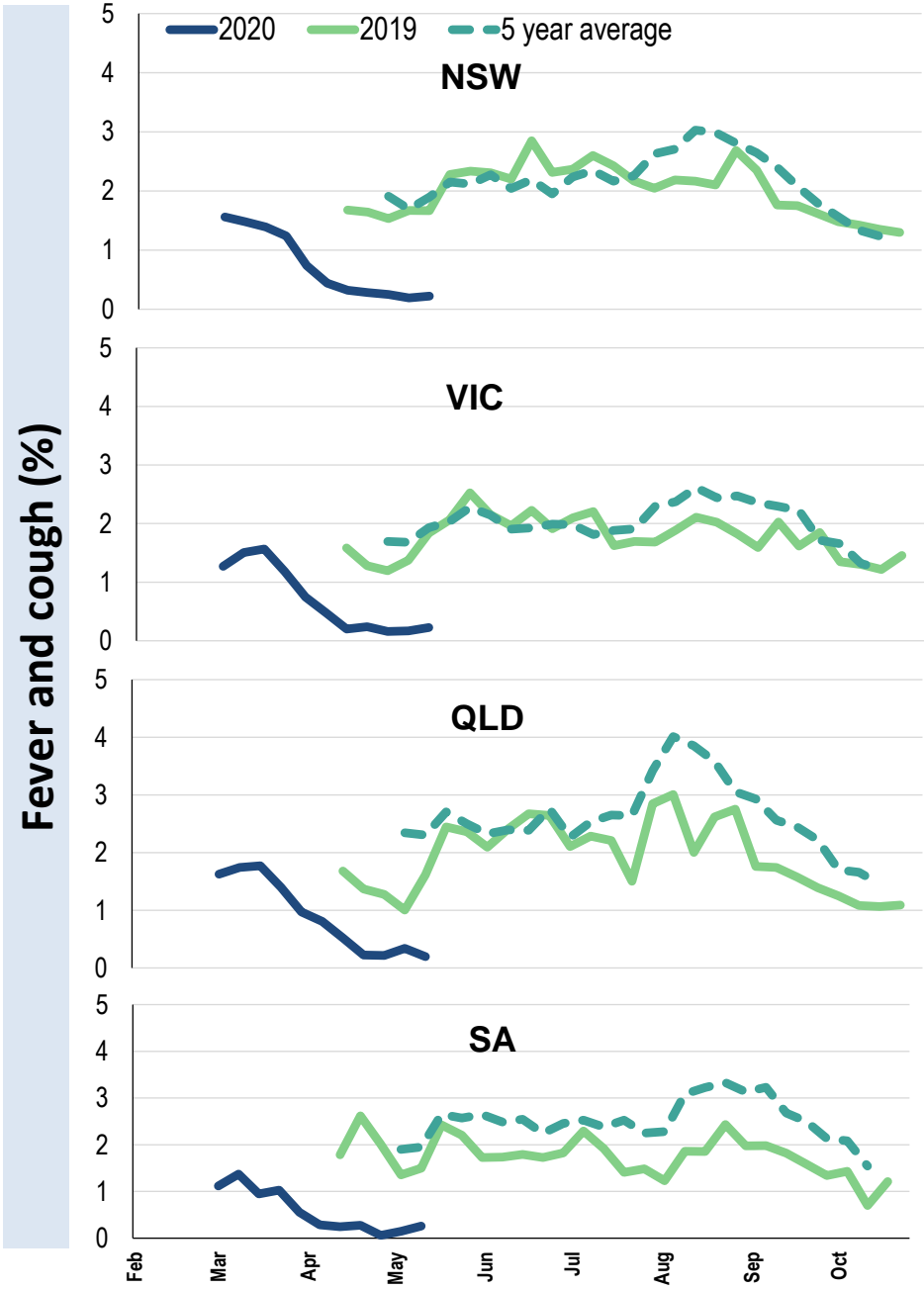
Influenza-like illness severity: <i>49% of participants with fever and cough sought medical advice this week</i>		
Influenza-like illness Severity	Week ending 10 May 2020 number (%)	Week ending 03 May 2020 number (%)
Number of participants	76036 (100%)	75464 (100%)
Fever & cough	155 (0.2%)	159 (0.2%)
Fever, cough & time-off normal duties	60 (0.1%)	77 (0.1%)
Fever, cough & 3 or more days off work/normal duties	34 (0%)	53 (0.1%)
Number of participants with fever and cough	155 (100%)	159 (100%)
*Sought medical advice for fever and cough	76 (49%)	92 (57.9%)
Admitted to hospital	2 (1.3%)	4 (2.5%)
Tested for influenza	7 (4.5%)	7 (4.4%)
Tested, result positive for influenza	2 (1.3%)	6 (3.8%)
Tested for coronavirus (COVID-19)	59 (38.1%)	75 (47.2%)
Tested, result positive for coronavirus (COVID-19)	1 (0.6%)	1 (0.6%)

*Includes those who sought medical advice from a general practitioner, COVID-19 clinic, emergency department, or were admitted to hospital for fever & cough

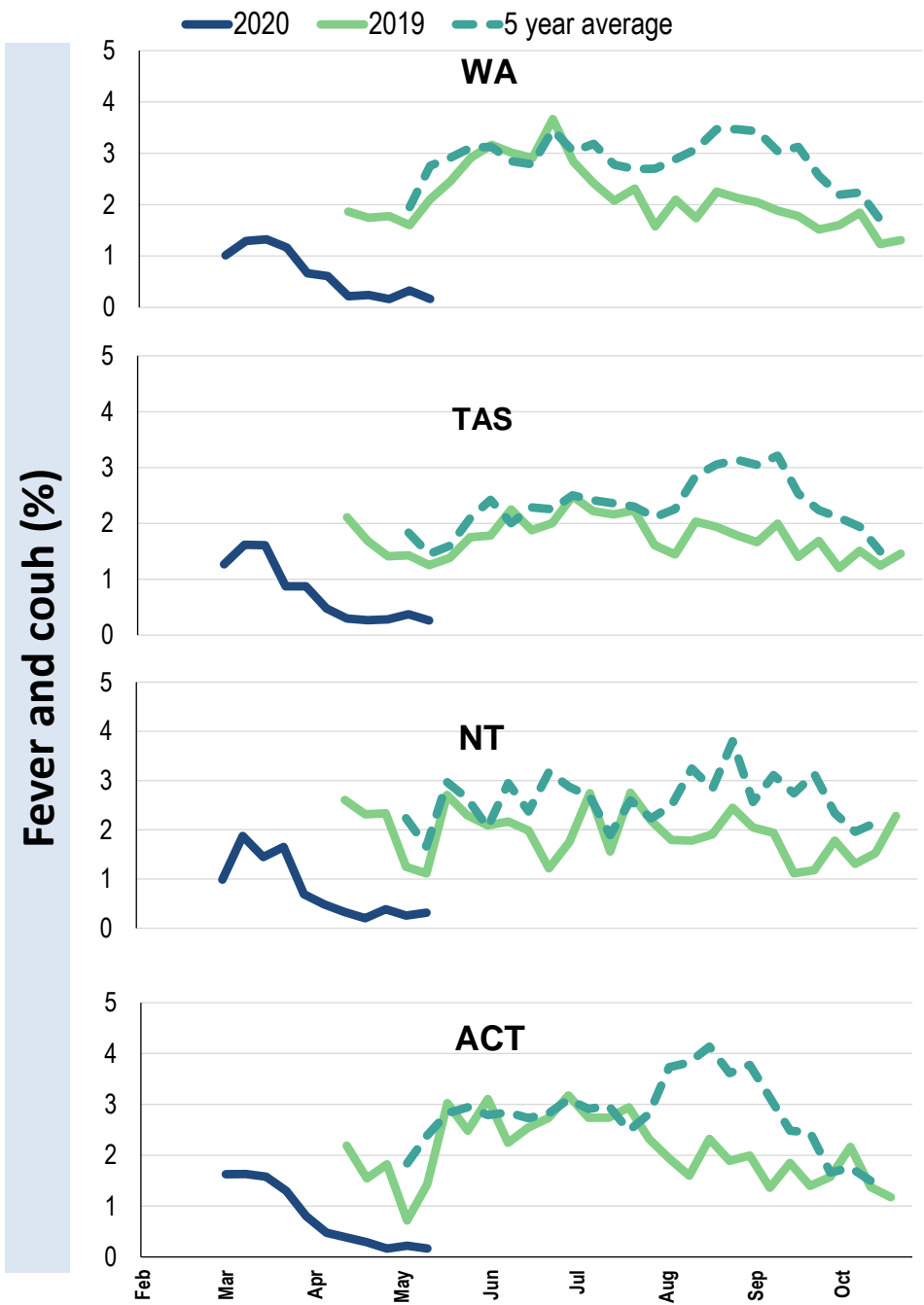
Influenza-like illness activity by age group (Australia):



Influenza-like illness activity by state/territory (age standardised):



Influenza-like illness activity by state/territory (age standardised):



Participation:
76,036 participants (75,464 last week)

State	Participants	%	Rate/100,000 population
NSW	26135	34.4%	331.0
VIC	15531	20.4%	244.2
QLD	9814	12.9%	198.3
SA	6709	8.8%	388.5
WA	8160	10.7%	315.4
TAS	4634	6.1%	887.7
NT	1202	1.6%	488.4
ACT	3851	5.1%	933.3
AUS	76036	100.0%	307.8

Vaccination rates:
Vaccination rates: 69.7% overall

Vaccinated participants:	%
<5 years	57.7
5-17 years	46.2
18-64 years	68.0
65+ years	86.1
Working with patients	86.3



FluTracking
Tracking COVID-19