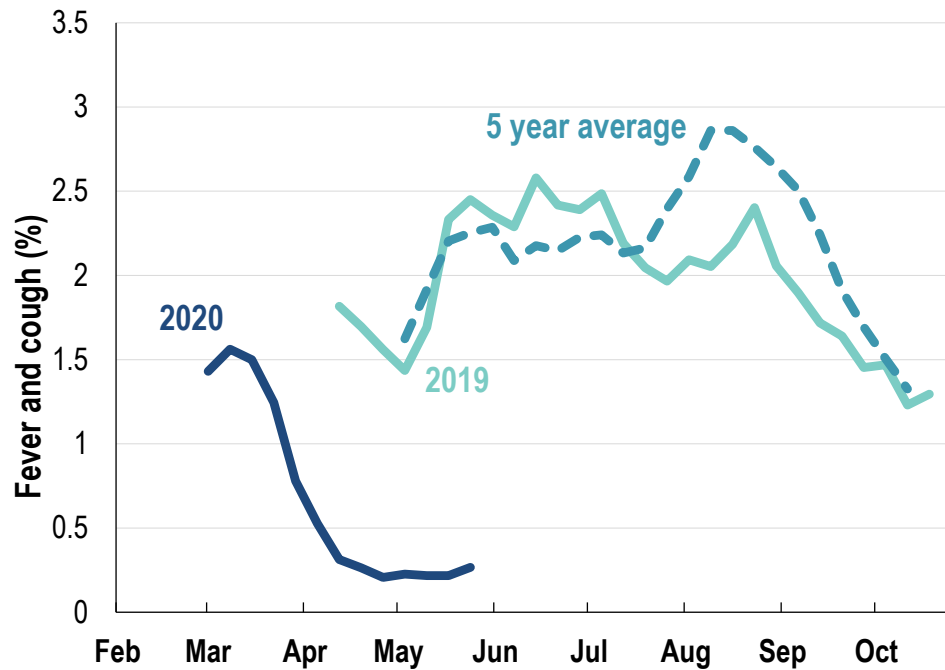




This week influenza-like illness activity is low 73,616 participants this week

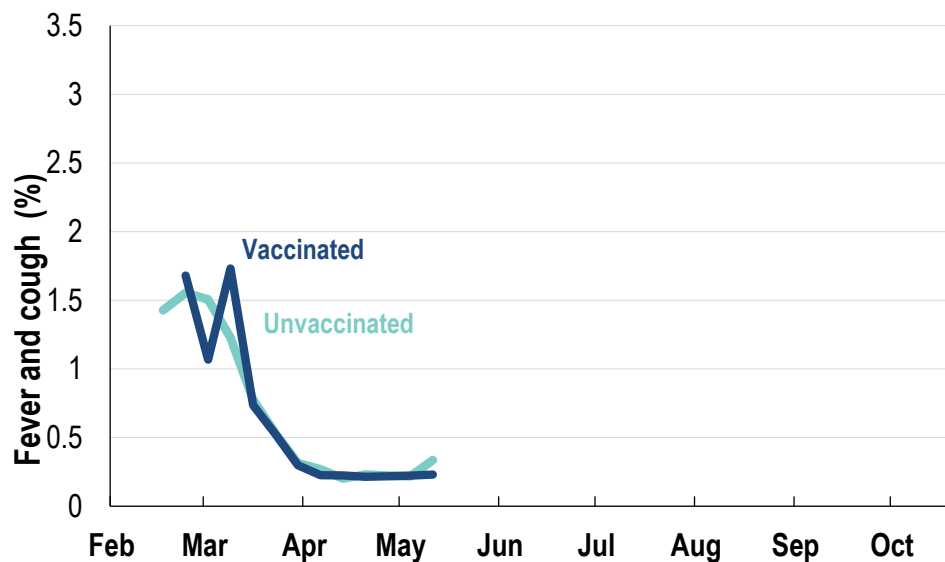
Influenza-like illness activity:

Fever and cough: 0.27% this week (flu-like illness activity is historically low)



*5 year average is calculated using 2015, 2016, 2017, 2018 and 2019 data
^ Data are age standardised in this chart

Influenza-like illness activity by vaccination status:

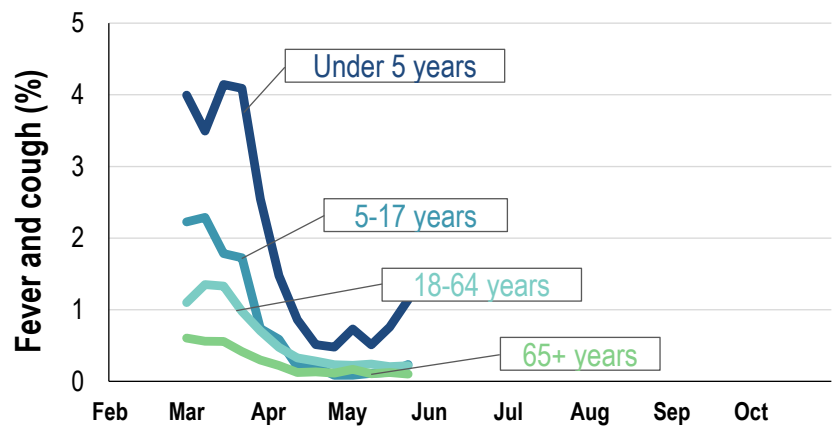


* Data are age standardised in this chart

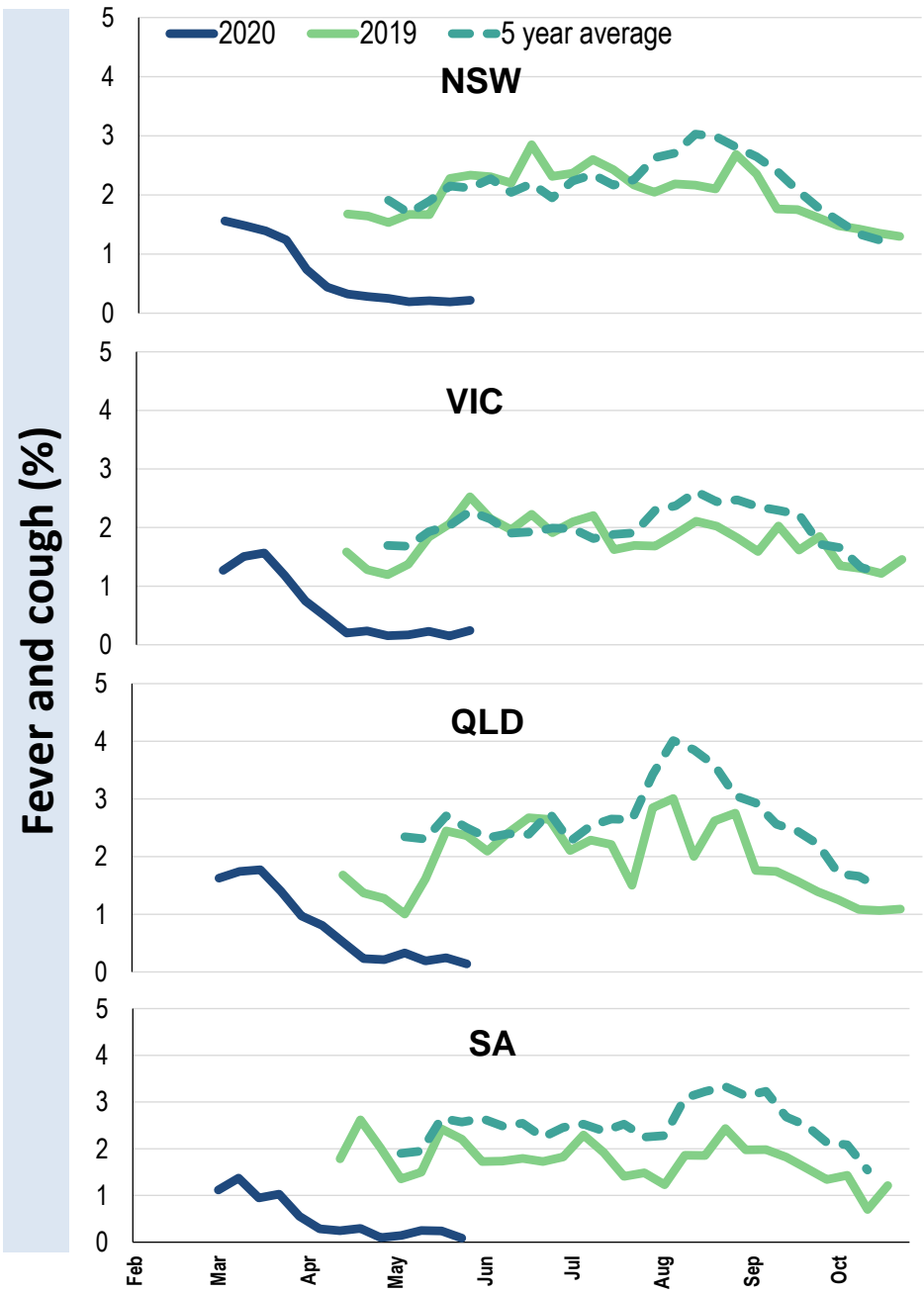
Influenza-like illness severity: <i>48.8% of participants with fever and cough sought medical advice this week</i>		
Influenza-like illness Severity	Week ending 24 May 2020 number (%)	Week ending 17 May 2020 number (%)
Number of participants	73616 (100%)	74141 (100%)
Fever & cough	160 (0.2%)	139 (0.2%)
Fever, cough & time-off normal duties	99 (0.1%)	81 (0.1%)
Fever, cough & 3 or more days off work/normal duties	55 (0.1%)	45 (0.1%)
Number of participants with fever and cough	160 (100%)	139 (100%)
*Sought medical advice for fever and cough	78 (48.8%)	83 (59.7%)
Admitted to hospital	2 (1.3%)	2 (1.4%)
Tested for influenza	8 (5%)	11 (7.9%)
Tested, result positive for influenza	5 (3.1%)	4 (2.9%)
Tested for coronavirus (COVID-19)	65 (40.6%)	73 (52.5%)
Tested, result positive for coronavirus (COVID-19)	0 (0%)	0 (0%)

*Includes those who sought medical advice from a general practitioner, COVID-19 clinic, emergency department, or were admitted to hospital for fever & cough

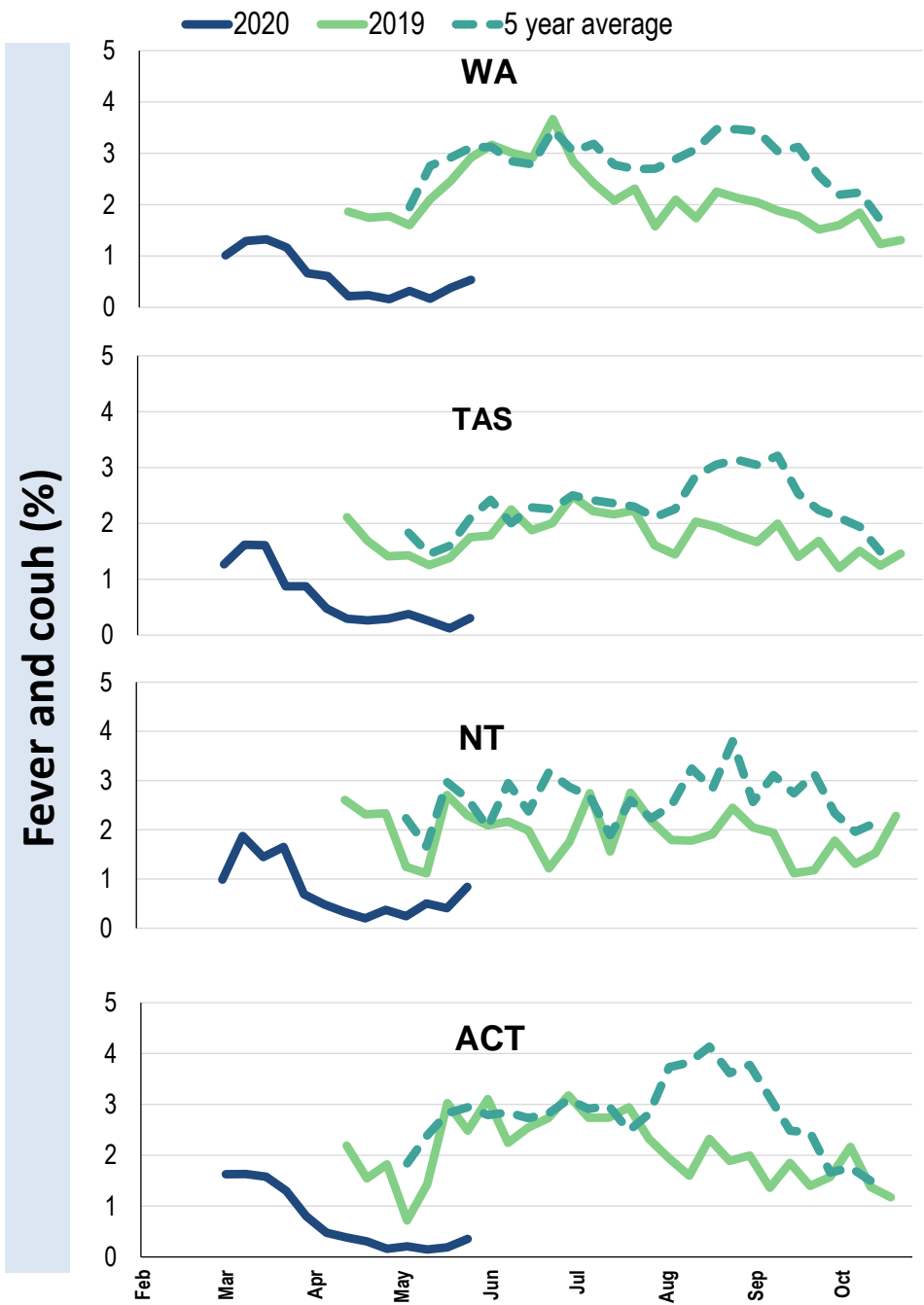
Influenza-like illness activity by age group (Australia):



Influenza-like illness activity by state/territory (age standardised):



Influenza-like illness activity by state/territory (age standardised):



Participation:
73,616 participants (74,141 last week)

State	Participants	%	Rate/100,000 population
NSW	25443	34.6%	322.2
VIC	14913	20.3%	234.5
QLD	9560	13.0%	193.2
SA	6392	8.7%	370.1
WA	7669	10.4%	296.4
TAS	4566	6.2%	874.7
NT	1189	1.6%	483.1
ACT	3884	5.3%	941.3
AUS	73616	100.0%	298.0

Vaccination rates:
Vaccination rates: 76.3% overall

Vaccinated participants:	%
<5 years	67.9
5-17 years	54.2
18-64 years	74.7
65+ years	91.0
Working with patients	89.6



FluTracking
Tracking COVID-19