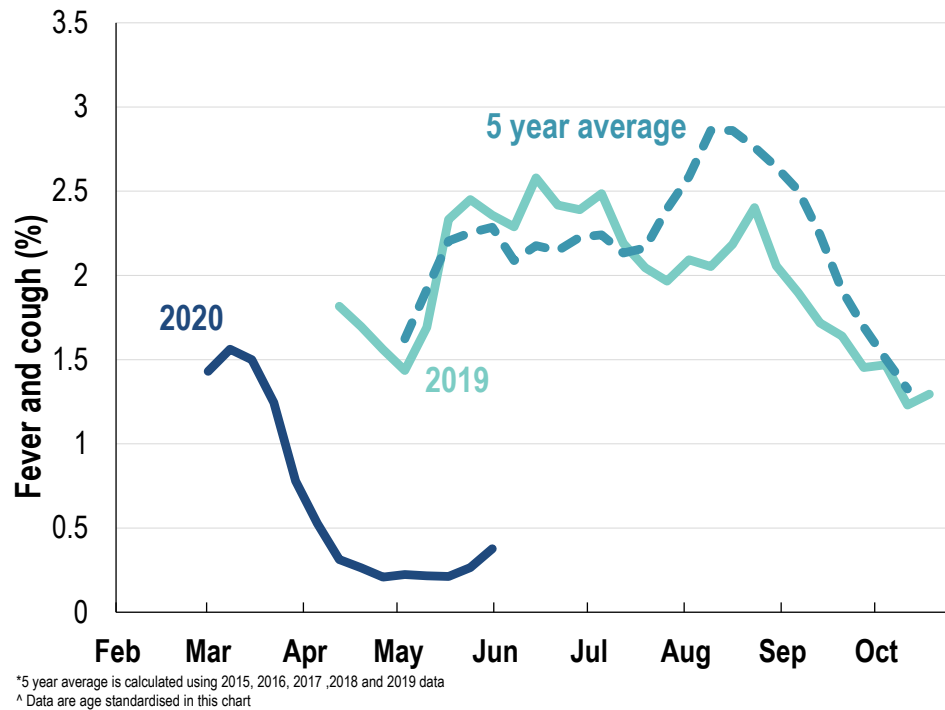




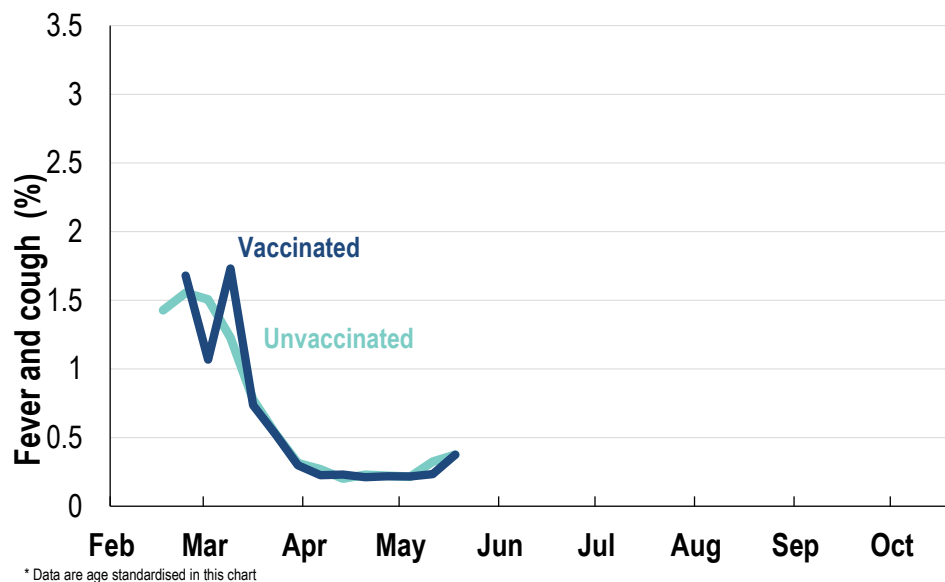
## This week influenza-like illness activity is low 73,880 participants this week

### Influenza-like illness activity:

*Fever and cough: 0.38% this week (flu-like illness activity is historically low)*



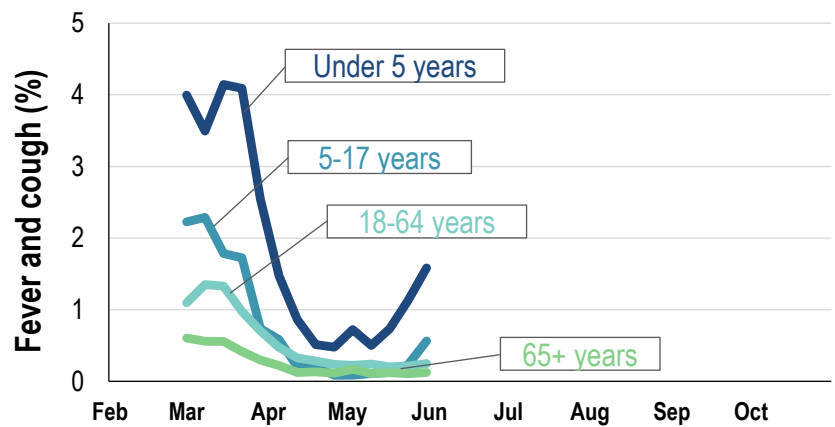
### Influenza-like illness activity by vaccination status:



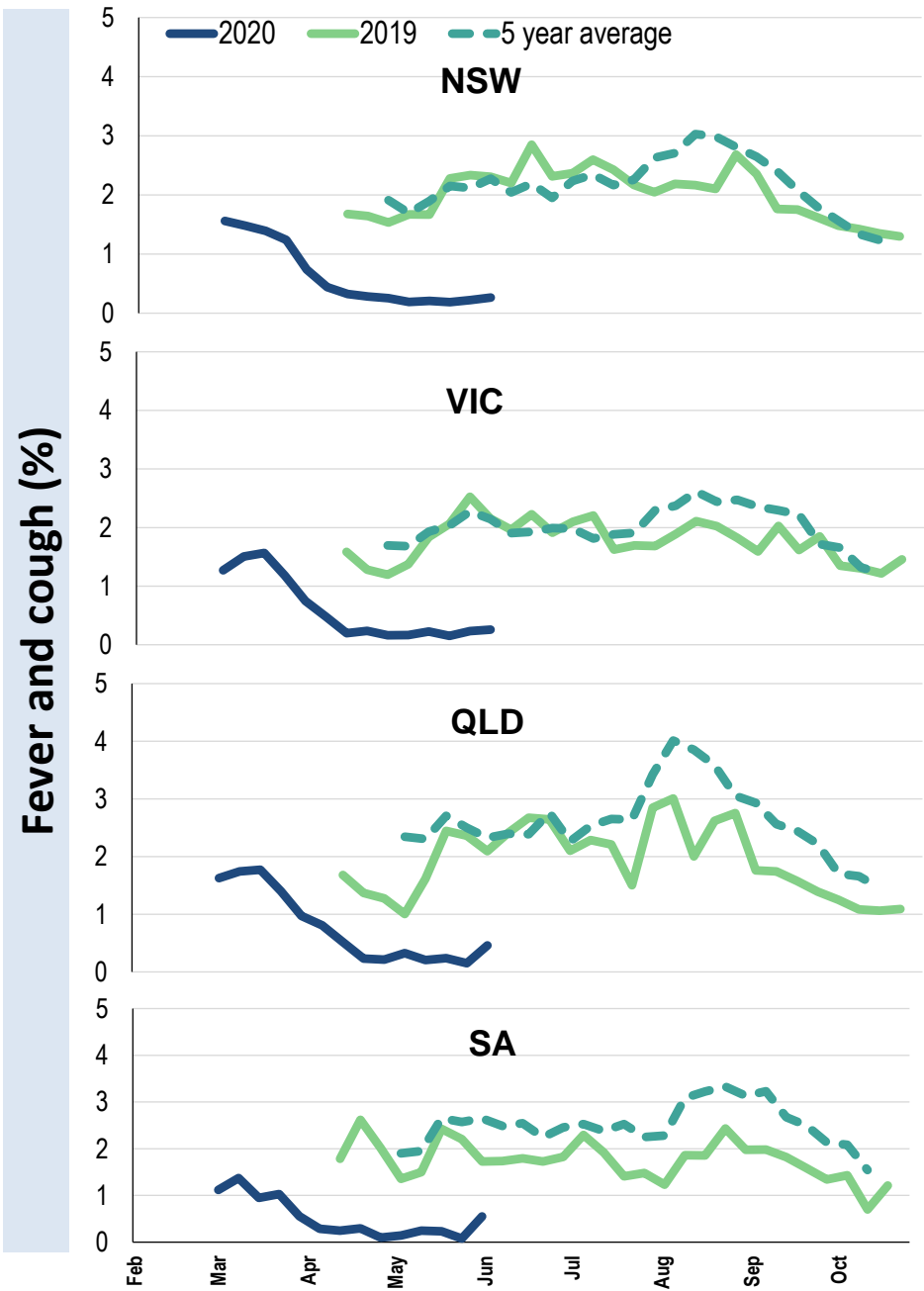
Influenza-like illness severity: <i>50% of participants with fever and cough sought medical advice this week</i>		
Influenza-like illness Severity	Week ending 31 May 2020 number (%)	Week ending 24 May 2020 number (%)
<b>Number of participants</b>	73880 (100%)	75208 (100%)
Fever & cough	212 (0.3%)	168 (0.2%)
Fever, cough & time-off normal duties	123 (0.2%)	109 (0.1%)
Fever, cough & 3 or more days off work/normal duties	72 (0.1%)	63 (0.1%)
<b>Number of participants with fever and cough</b>	212 (100%)	168 (100%)
*Sought medical advice for fever and cough	106 (50%)	91 (54.2%)
Admitted to hospital	5 (2.4%)	3 (1.8%)
Tested for coronavirus (COVID-19)	82 (38.7%)	75 (44.6%)
Tested, result positive for coronavirus (COVID-19)	0 (0%)	0 (0%)

\*Includes those who sought medical advice from a general practitioner, COVID-19 clinic, emergency department, or were admitted to hospital for fever & cough

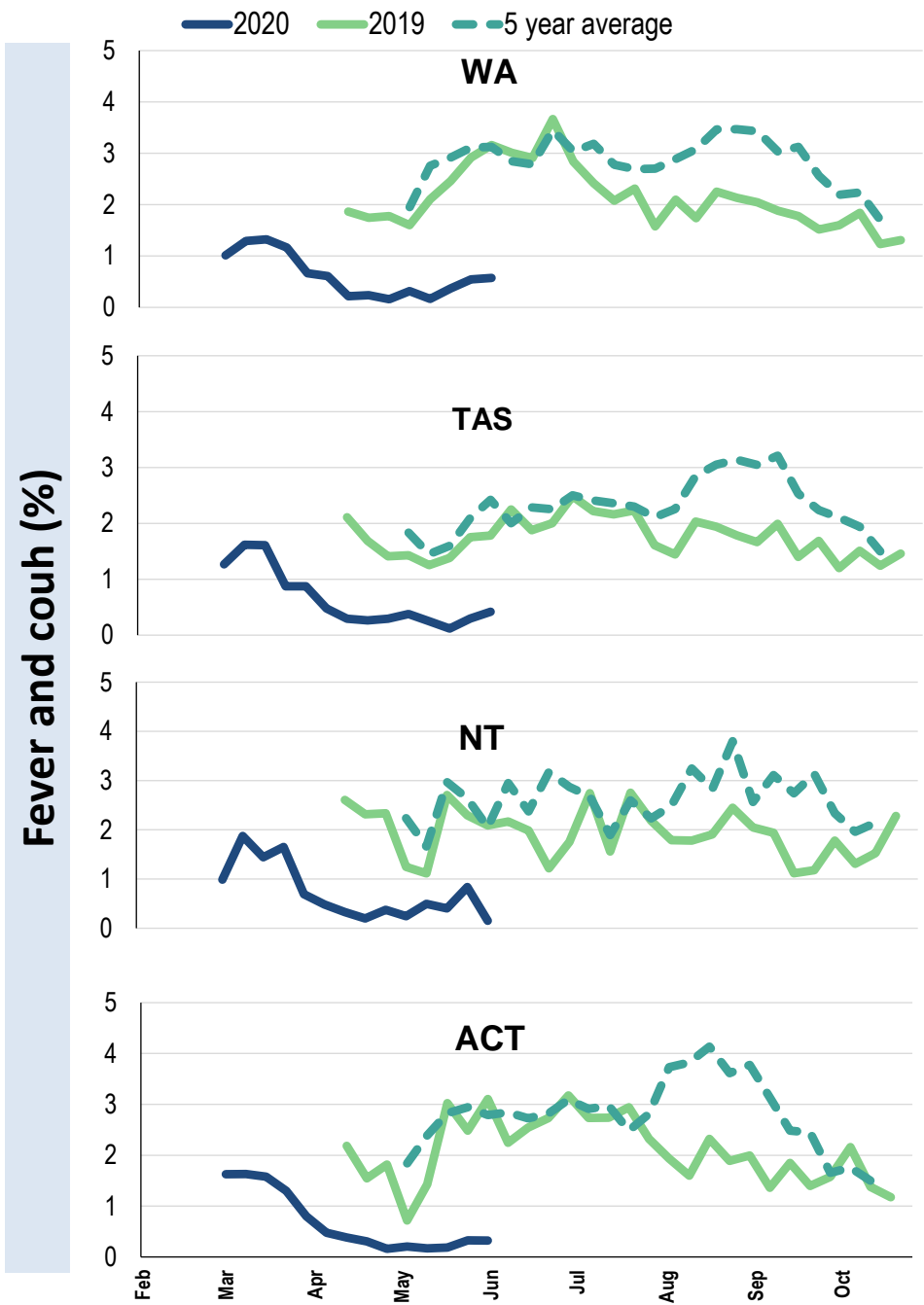
Influenza-like illness activity by age group (Australia):



Influenza-like illness activity by state/territory (age standardised):



Influenza-like illness activity by state/territory (age standardised):



Participation:  
73,880 participants (75,208 last week)

State	Participants	%	Rate/100,000 population
NSW	25517	34.5%	323.2
VIC	15099	20.4%	237.4
QLD	9603	13.0%	194.1
SA	6477	8.8%	375.1
WA	7601	10.3%	293.8
TAS	4552	6.2%	872.0
NT	1219	1.6%	495.3
ACT	3812	5.2%	923.9
AUS	73880	100.0%	299.1

Vaccination rates:  
Vaccination rates: 78% overall  
Vaccinated participants:

	%
<5 years	70.6
5-17 years	56.1
18-64 years	76.5
65+ years	92.0
Working with patients	91.0



FluTracking  
Tracking COVID-19