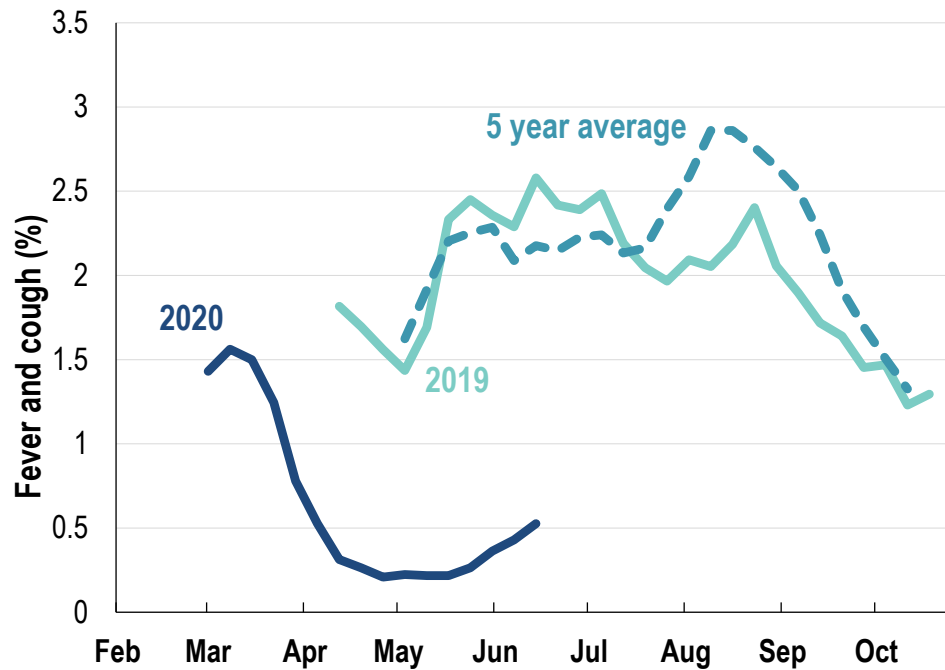




This week influenza-like illness activity is low 72,966 participants this week

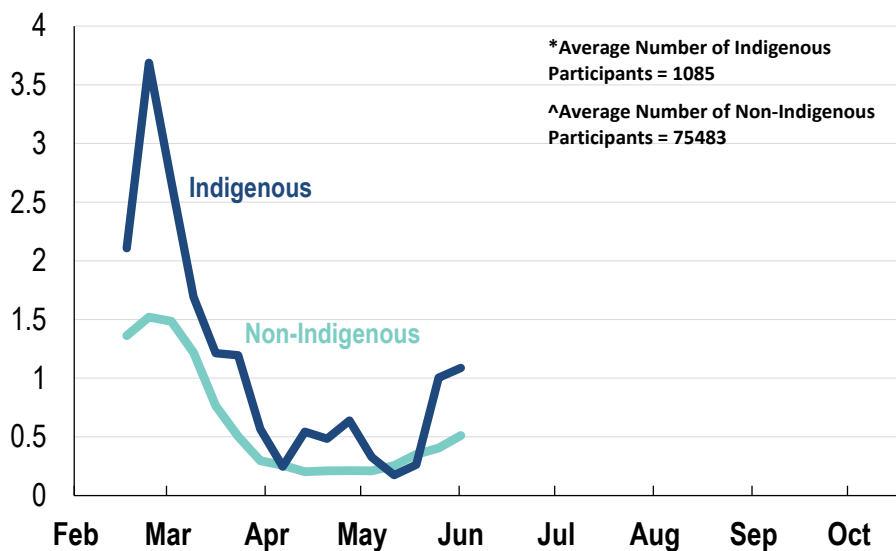
Influenza-like illness activity:

Fever and cough: 0.53% this week (flu-like illness activity is historically low)



*5 year average is calculated using 2015, 2016, 2017, 2018 and 2019 data
^ Data are age standardised in this chart

Influenza-like illness activity by Indigenous status:



*Average Number of Indigenous Participants = 1085

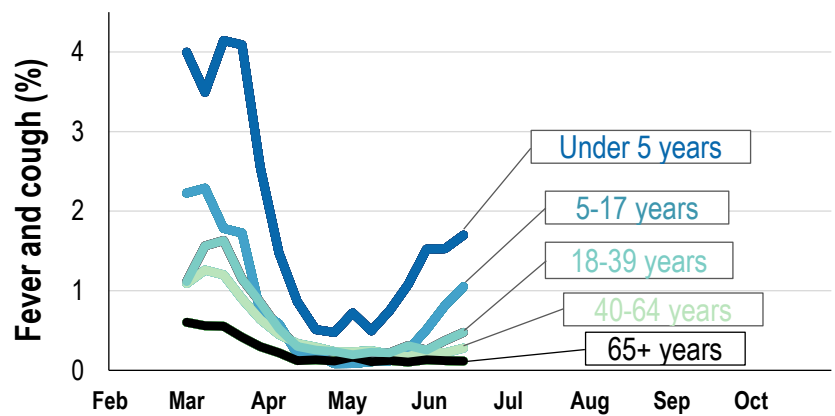
^Average Number of Non-Indigenous Participants = 75483

* Data are age standardised in this chart

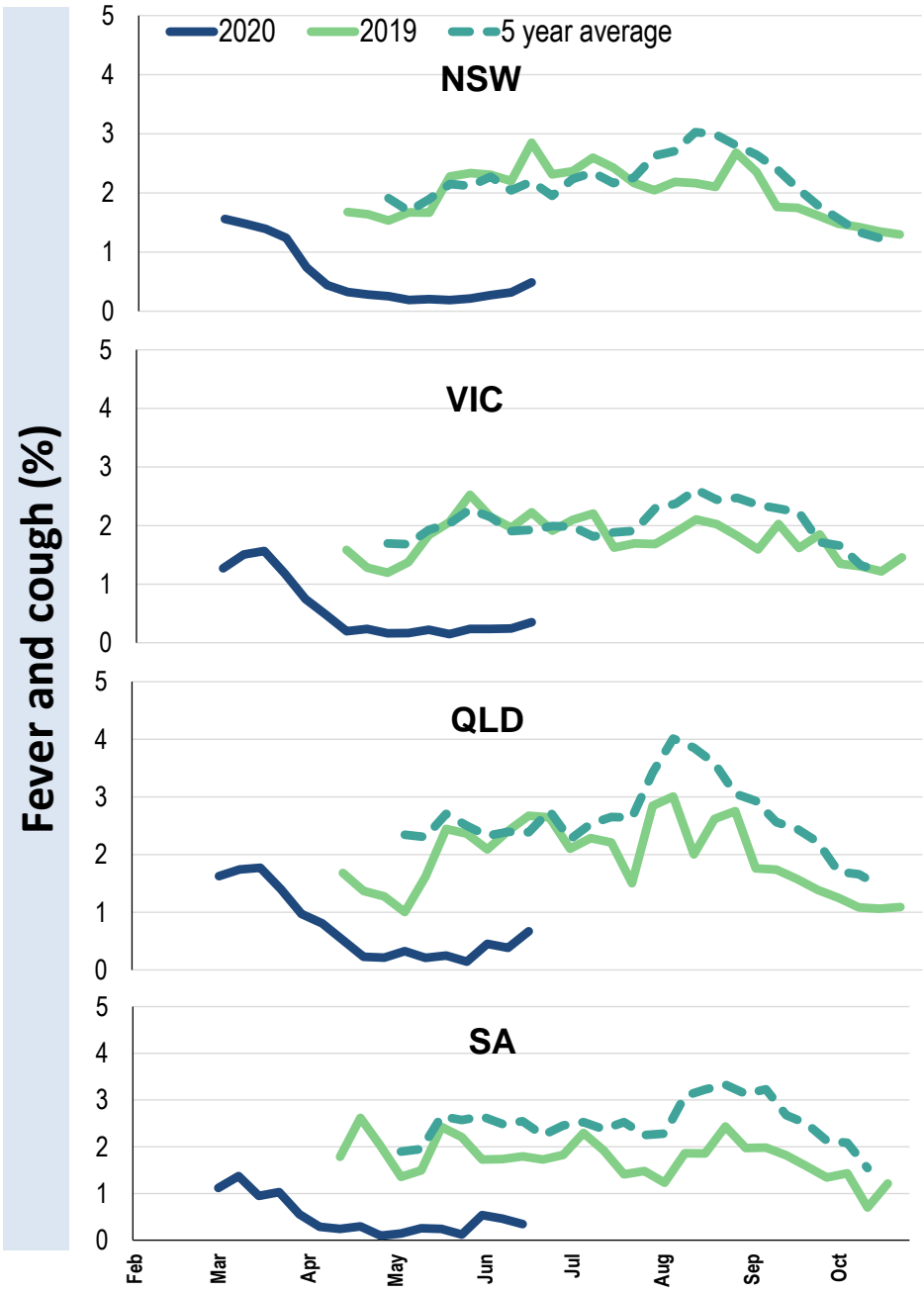
Influenza-like illness severity: <i>53.8% of participants with fever and cough sought medical advice this week</i>		
Influenza-like illness Severity	Week ending 14 June 2020 number (%)	Week ending 07 June 2020 number (%)
Number of participants	72966 (100%)	73308 (100%)
Fever & cough	286 (0.4%)	231 (0.3%)
Fever, cough & time-off normal duties	199 (0.3%)	154 (0.2%)
Fever, cough & 3 or more days off work/normal duties	125 (0.2%)	90 (0.1%)
Number of participants with fever and cough	286 (100%)	231 (100%)
*Sought medical advice for fever and cough	154 (53.8%)	121 (52.4%)
Admitted to hospital	5 (1.7%)	2 (0.9%)
Tested for influenza	44 (15.4%)	37 (16%)
Tested, result positive for influenza	2 (0.7%)	2 (0.9%)
Tested for coronavirus (COVID-19)	111 (38.8%)	110 (47.6%)
Tested, result positive for coronavirus (COVID-19)	1 (0.3%)	0 (0%)

*Includes those who sought medical advice from a general practitioner, COVID-19 clinic, emergency department, or were admitted to hospital for fever & cough

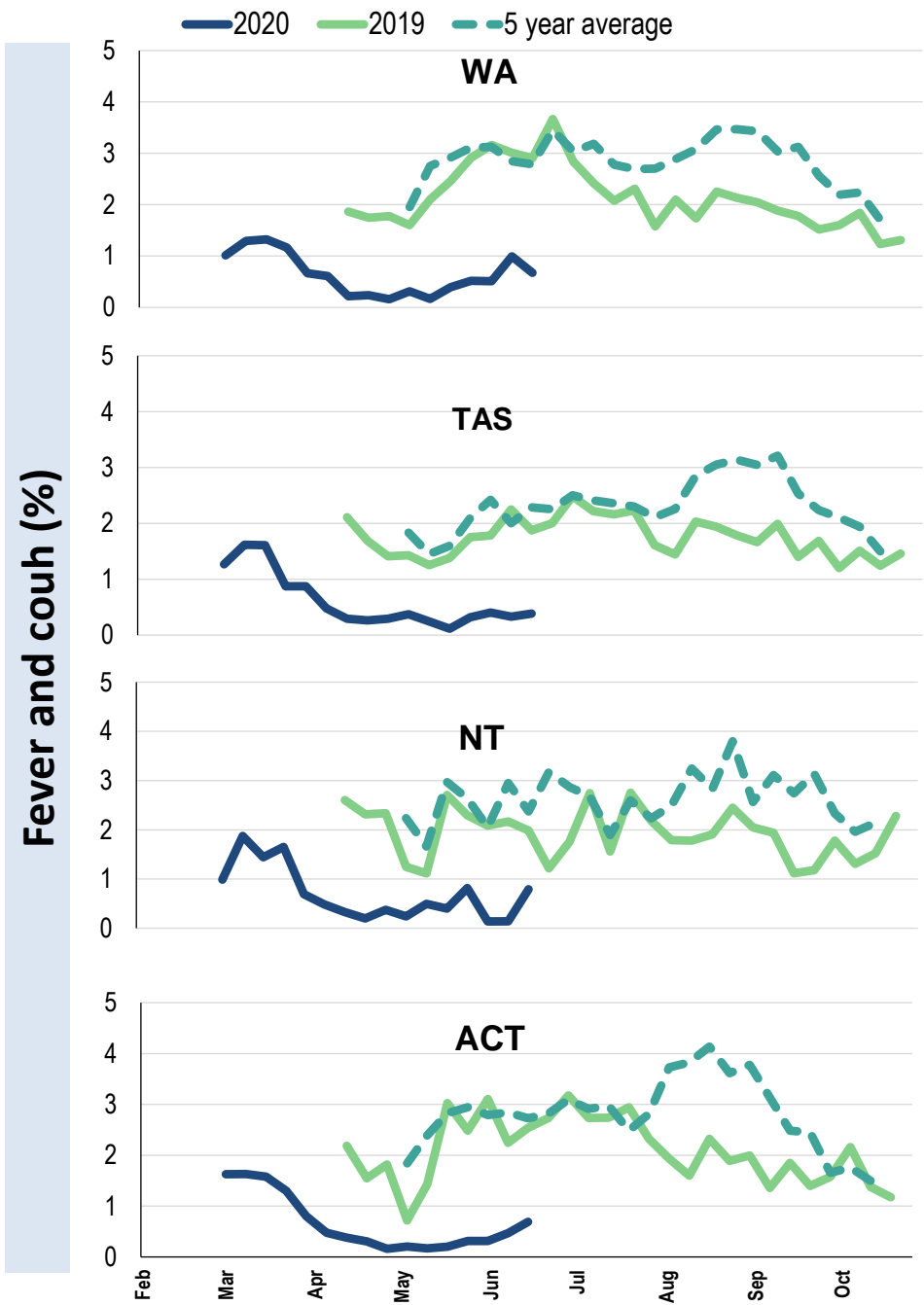
Influenza-like illness activity by age group (Australia):



Influenza-like illness activity by state/territory (age standardised):



Influenza-like illness activity by state/territory (age standardised):



Participation:

72,966 participants (73,308 last week)

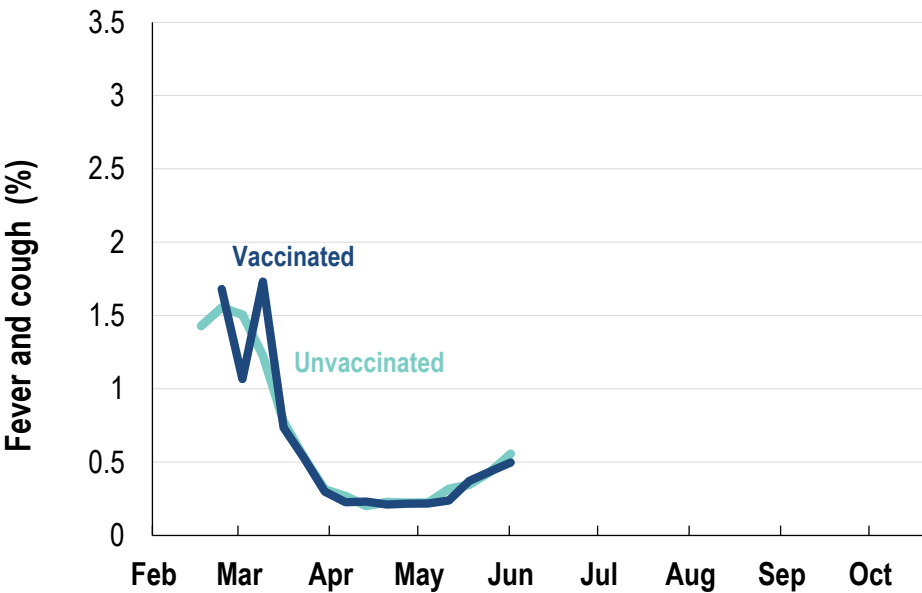
State	Participants	% Rate/100,000 population
NSW	25247	34.6% 319.8
VIC	14736	20.2% 231.7
QLD	9366	12.8% 189.3
SA	6325	8.7% 366.3
WA	7680	10.5% 296.9
TAS	4573	6.3% 876.1
NT	1161	1.6% 471.8
ACT	3878	5.3% 939.9
AUS	72966	100.0% 295.4

Vaccination rates:

Vaccination rates: 80% overall

Vaccinated participants:	%
<5 years	74.6
5-17 years	59.1
18-64 years	78.5
65+ years	92.9
Working with patients	92.0

Influenza-like illness activity by vaccination status:



* Data are age standardised in this chart

