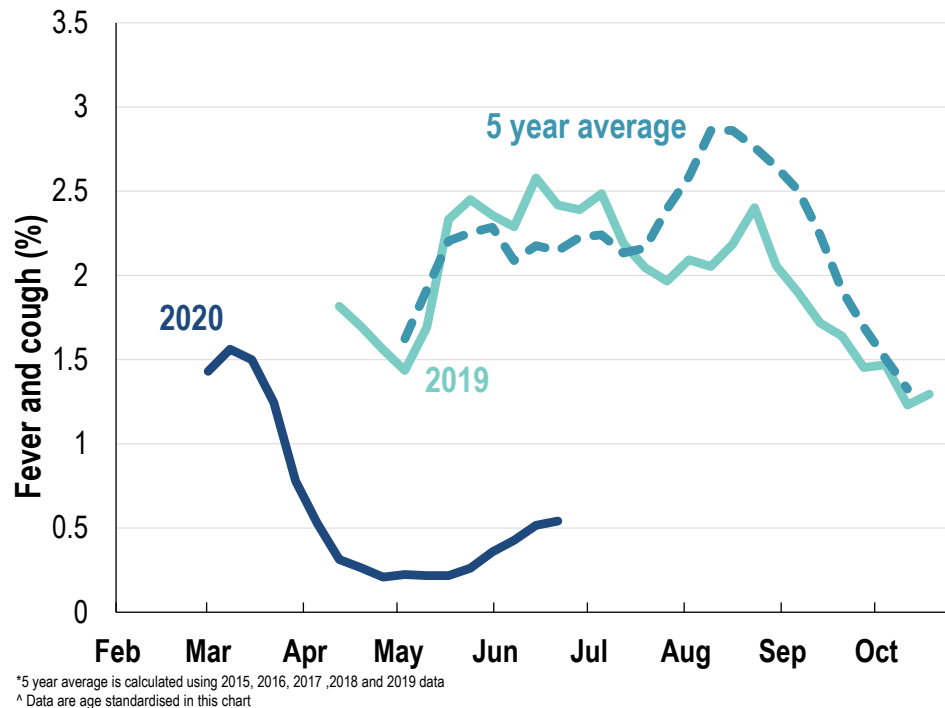




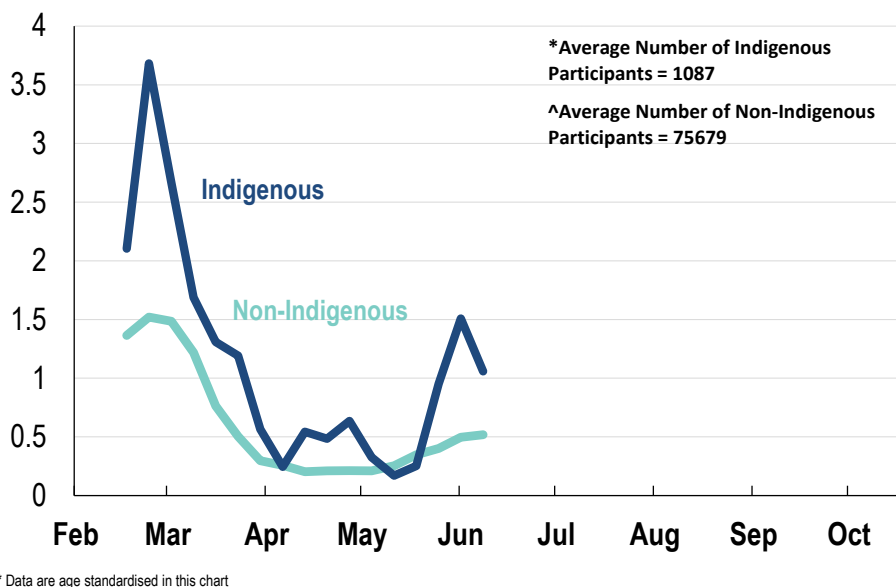
This week influenza-like illness activity is low 72,900 participants this week

Influenza-like illness activity:

Fever and cough: 0.54% this week (flu-like illness activity is historically low)



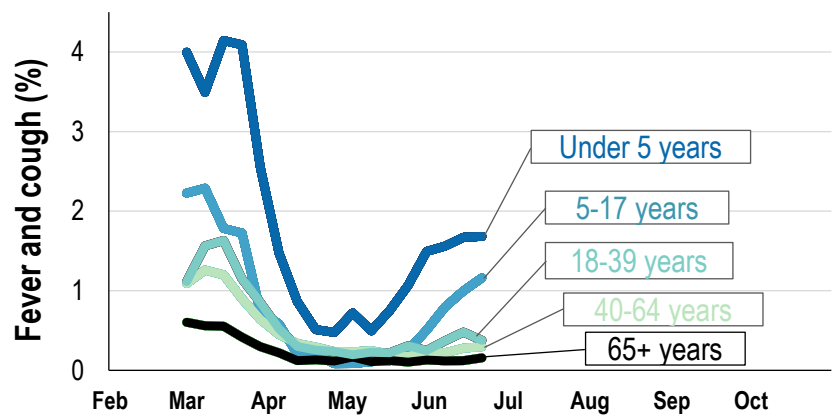
Influenza-like illness activity by Indigenous status:



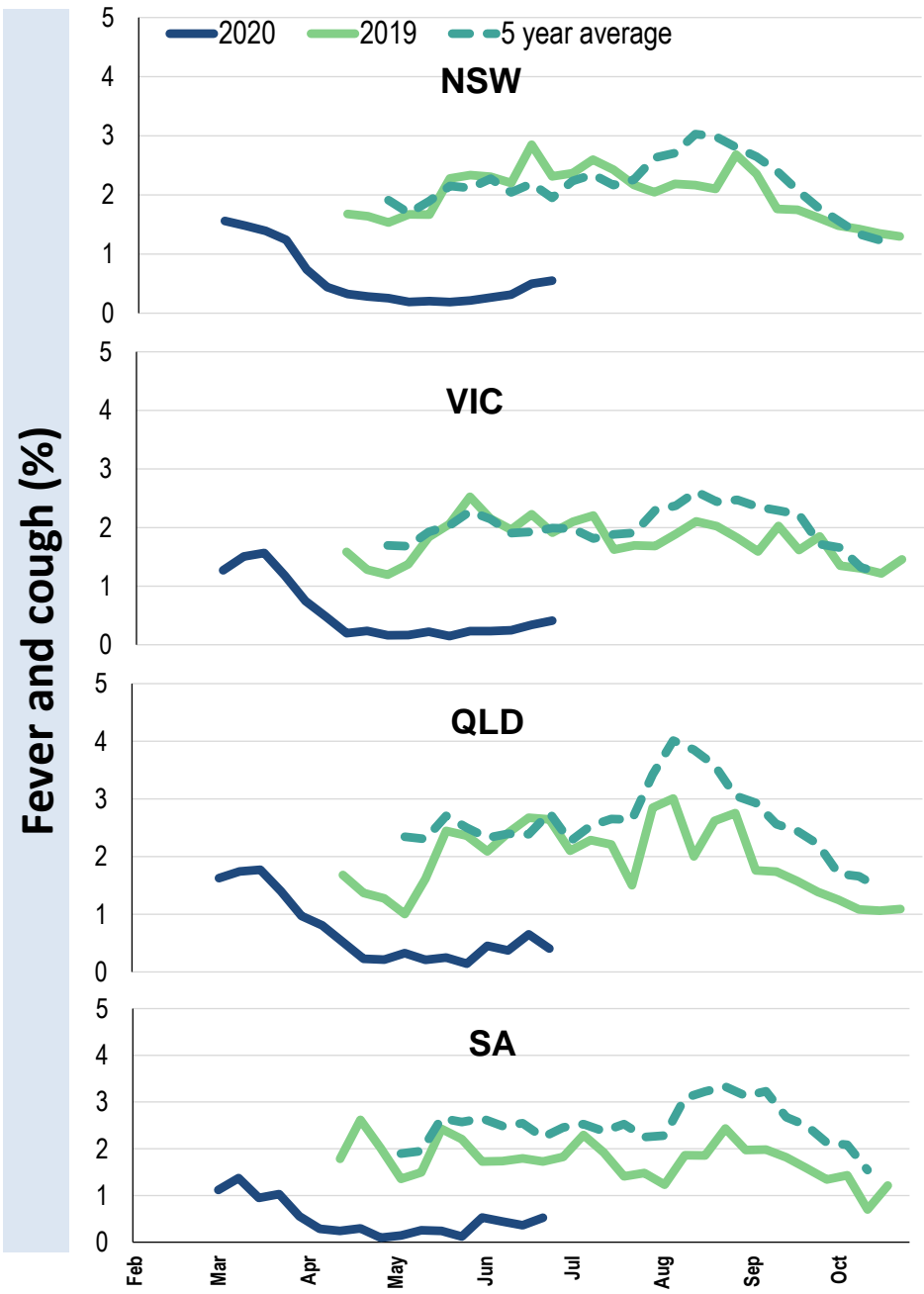
Influenza-like illness severity: <i>53.2% of participants with fever and cough sought medical advice this week</i>		
Influenza-like illness Severity	Week ending 21 June 2020 number (%)	Week ending 14 June 2020 number (%)
Number of participants	72900 (100%)	72966 (100%)
Fever & cough	293 (0.4%)	286 (0.4%)
Fever, cough & time-off normal duties	191 (0.3%)	208 (0.3%)
Fever, cough & 3 or more days off work/normal duties	119 (0.2%)	140 (0.2%)
Number of participants with fever and cough	293 (100%)	286 (100%)
*Sought medical advice for fever and cough	156 (53.2%)	166 (58%)
Admitted to hospital	3 (1%)	6 (2.1%)
Tested for influenza	39 (13.3%)	59 (20.6%)
Tested, result positive for influenza	3 (1%)	2 (0.7%)
Tested for coronavirus (COVID-19)	107 (36.5%)	135 (47.2%)
Tested, result positive for coronavirus (COVID-19)	0 (0%)	1 (0.3%)

*Includes those who sought medical advice from a general practitioner, COVID-19 clinic, emergency department, or were admitted to hospital for fever & cough

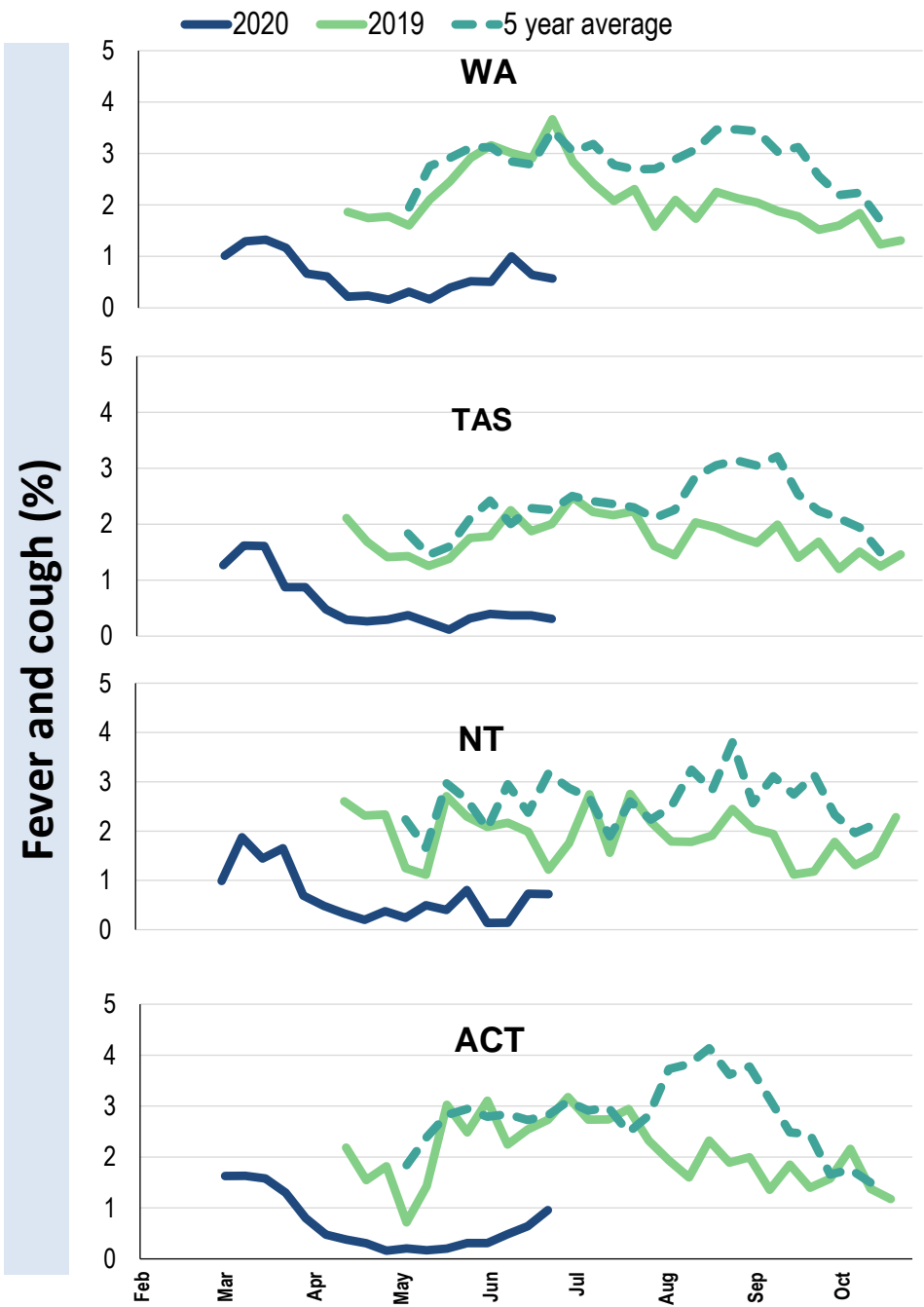
Influenza-like illness activity by age group (Australia):



Influenza-like illness activity by state/territory (age standardised):



Influenza-like illness activity by state/territory (age standardised):



Participation:

72,900 participants (72,966 last week)

State	Participants	%	Rate/100,000 population
NSW	25248	34.6%	319.8
VIC	14833	20.3%	233.3
QLD	9242	12.7%	186.8
SA	6363	8.7%	368.5
WA	7563	10.4%	292.3
TAS	4611	6.3%	883.3
NT	1188	1.6%	482.7
ACT	3852	5.3%	933.6
AUS	72900	100.0%	295.1

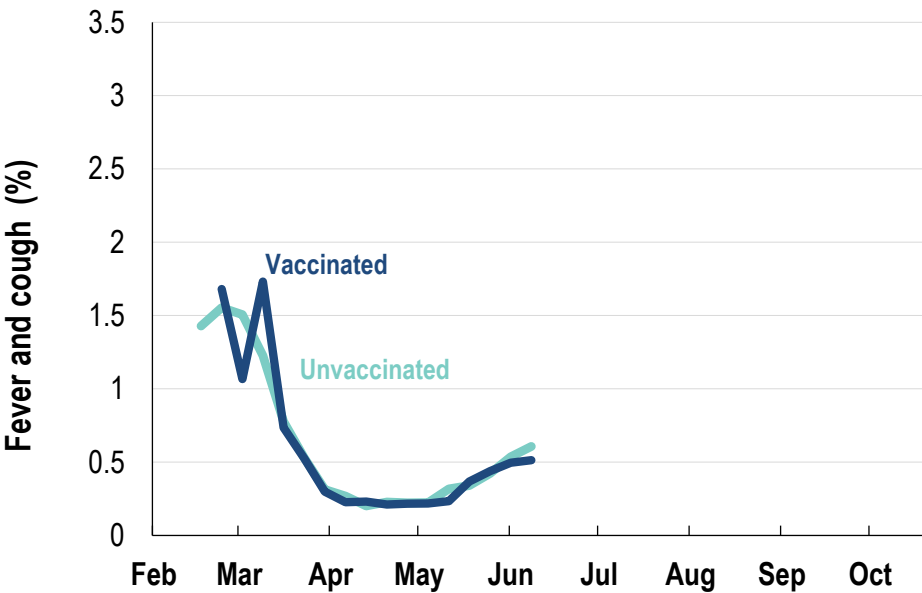
Vaccination rates:

Vaccination rates: 80.4% overall

Vaccinated participants:

	%
<5 years	75.5
5-17 years	59.0
18-64 years	79.0
65+ years	93.4
Working with patients	92.1

Influenza-like illness activity by vaccination status:



* Data are age standardised in this chart



FluTracking
Tracking COVID-19