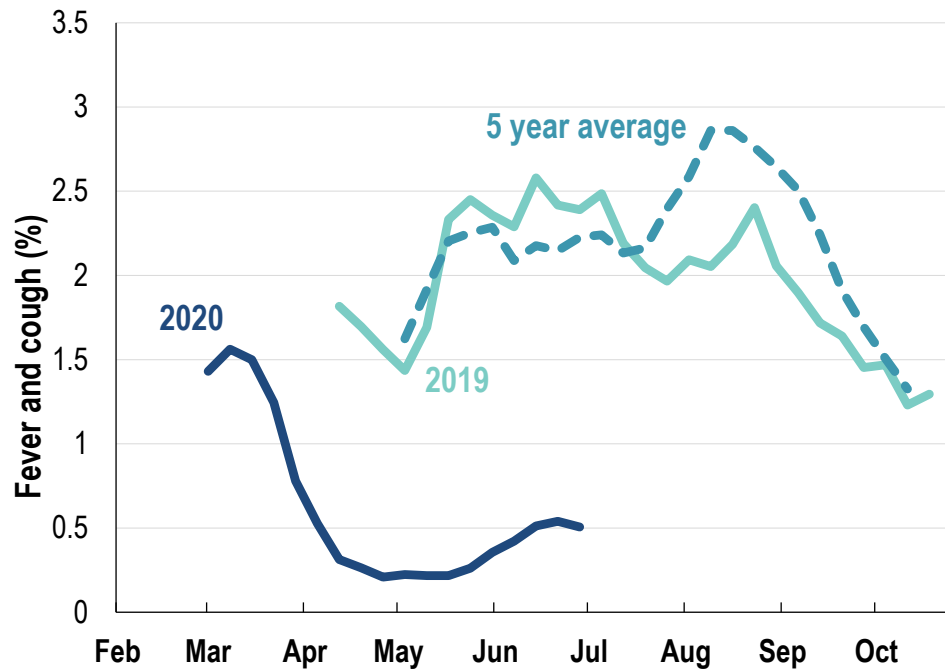




This week influenza-like illness activity is low 71,797 participants this week

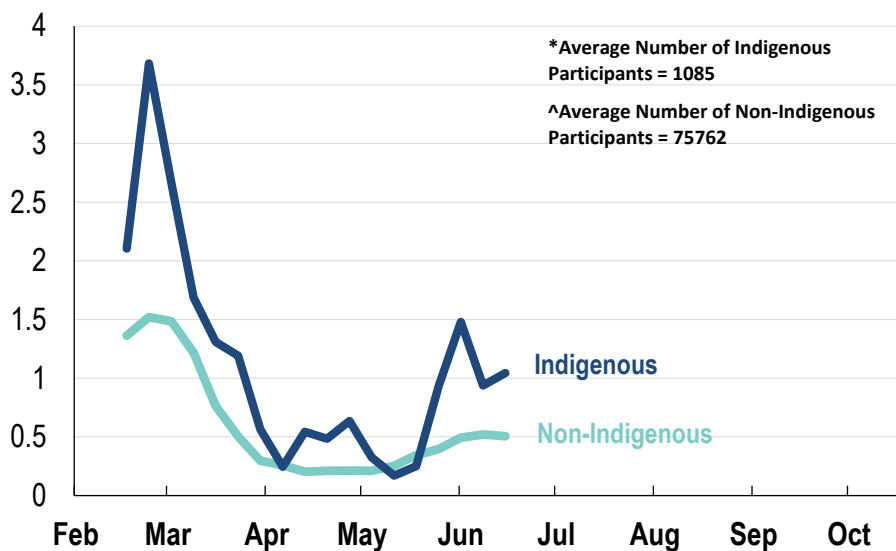
Influenza-like illness activity:

Fever and cough: 0.51% this week (flu-like illness activity is historically low)



*5 year average is calculated using 2015, 2016, 2017, 2018 and 2019 data
^ Data are age standardised in this chart

Influenza-like illness activity by Indigenous status:



*Average Number of Indigenous Participants = 1085

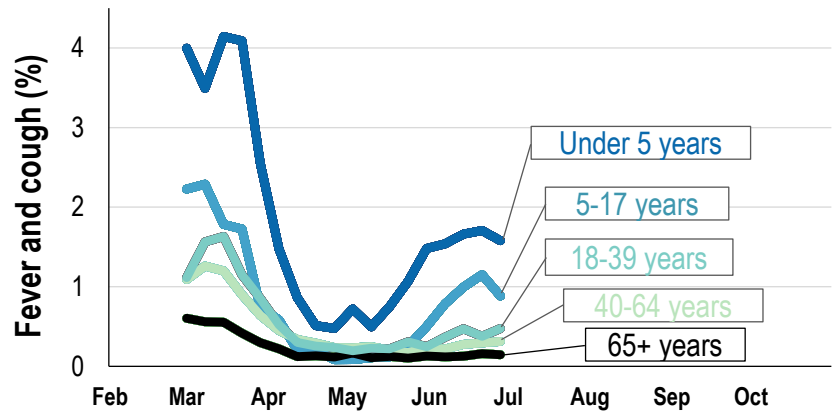
^Average Number of Non-Indigenous Participants = 75762

* Data are age standardised in this chart

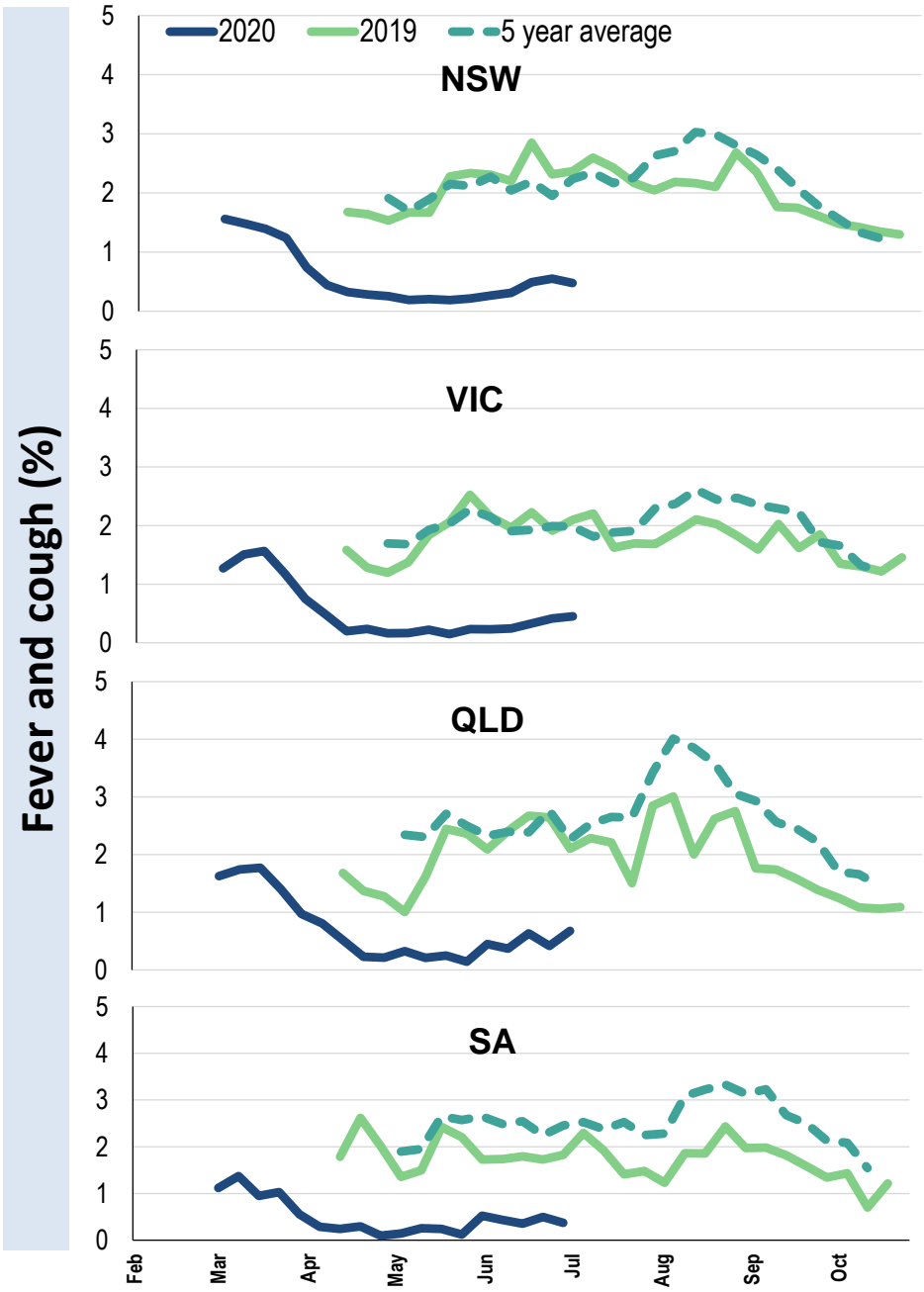
Influenza-like illness severity: <i>57.5% of participants with fever and cough sought medical advice this week</i>		
Influenza-like illness Severity	Week ending 28 June 2020 number (%)	Week ending 21 June 2020 number (%)
Number of participants	71797 (100%)	72900 (100%)
Fever & cough	280 (0.4%)	293 (0.4%)
Fever, cough & time-off normal duties	184 (0.3%)	202 (0.3%)
Fever, cough & 3 or more days off work/normal duties	113 (0.2%)	136 (0.2%)
Number of participants with fever and cough	280 (100%)	293 (100%)
*Sought medical advice for fever and cough	161 (57.5%)	167 (57%)
Admitted to hospital	0 (0%)	3 (1%)
Tested for influenza	39 (13.9%)	50 (17.1%)
Tested, result positive for influenza	0 (0%)	4 (1.4%)
Tested for coronavirus (COVID-19)	129 (46.1%)	132 (45.1%)
Tested, result positive for coronavirus (COVID-19)	0 (0%)	0 (0%)

*Includes those who sought medical advice from a general practitioner, COVID-19 clinic, emergency department, or were admitted to hospital for fever & cough

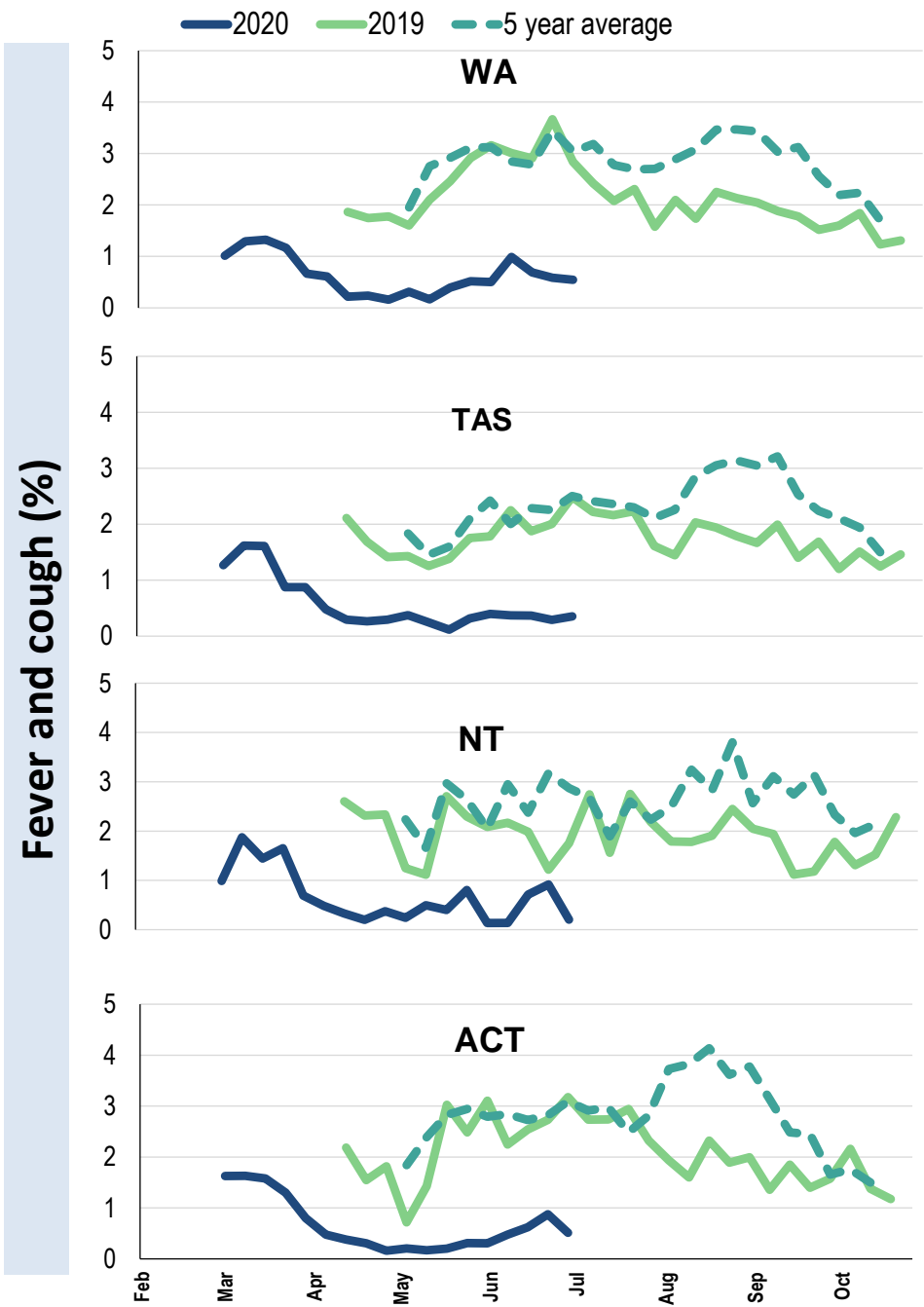
Influenza-like illness activity by age group (Australia):



Influenza-like illness activity by state/territory (age standardised):



Influenza-like illness activity by state/territory (age standardised):



Participation:

71,797 participants (72,900 last week)

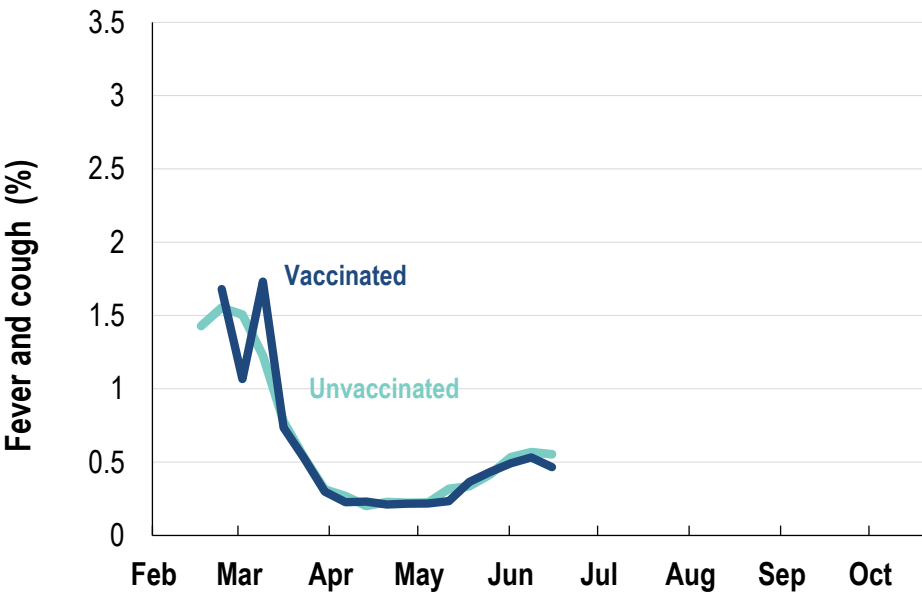
State	Participants	% Rate/100,000 population
NSW	24880	34.7% 315.1
VIC	14604	20.3% 229.7
QLD	9115	12.7% 184.2
SA	6183	8.6% 358.0
WA	7524	10.5% 290.8
TAS	4555	6.3% 872.6
NT	1134	1.6% 460.8
ACT	3802	5.3% 921.5
AUS	71797	100.0% 290.6

Vaccination rates:

Vaccination rates: 81% overall

Vaccinated participants:	%
<5 years	76.5
5-17 years	59.8
18-64 years	79.5
65+ years	93.5
Working with patients	92.5

Influenza-like illness activity by vaccination status:



* Data are age standardised in this chart

