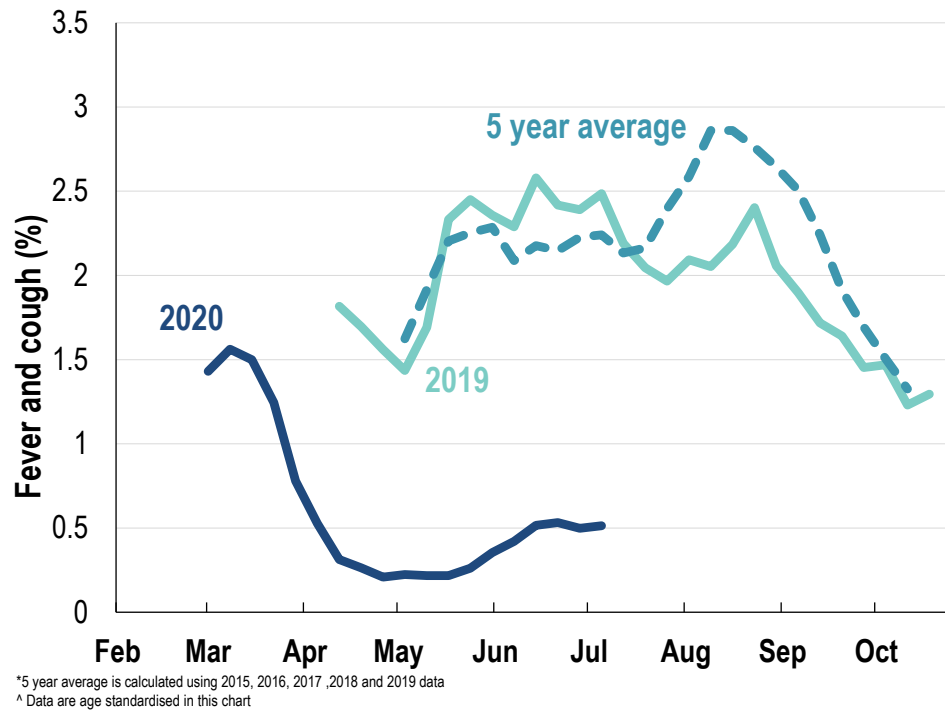




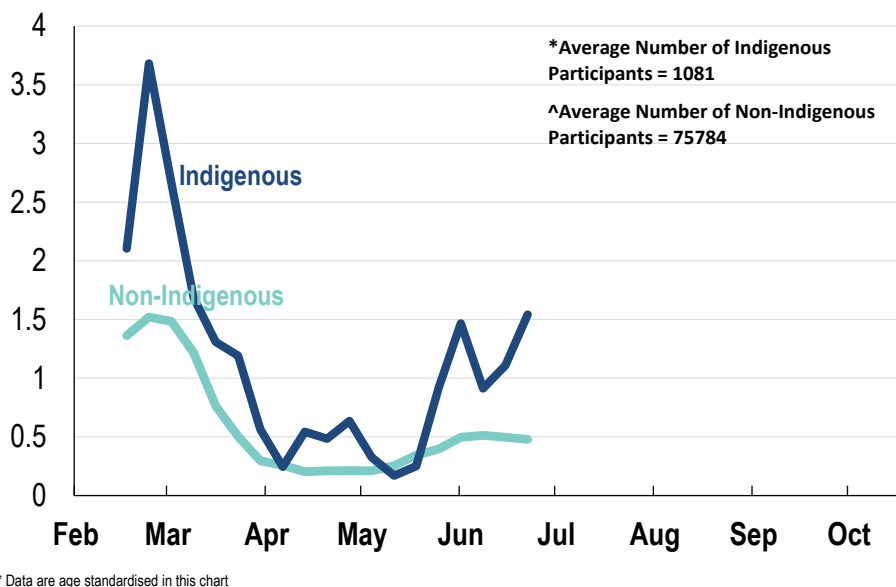
This week influenza-like illness activity is low 70,301 participants this week

Influenza-like illness activity:

Fever and cough: 0.5% this week (flu-like illness activity is historically low)



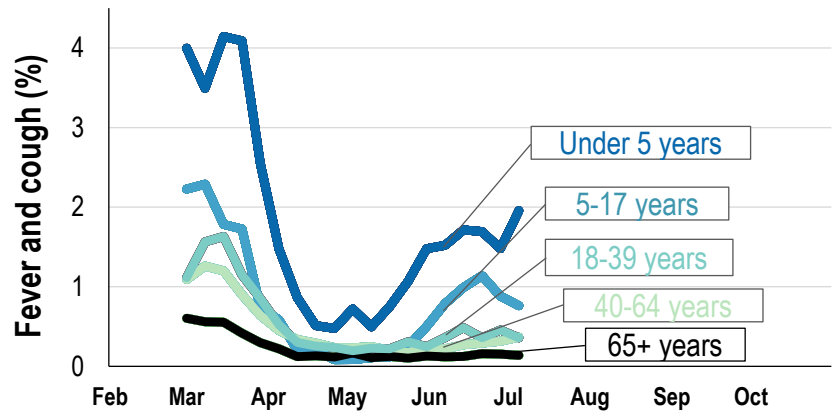
Influenza-like illness activity by Indigenous status:



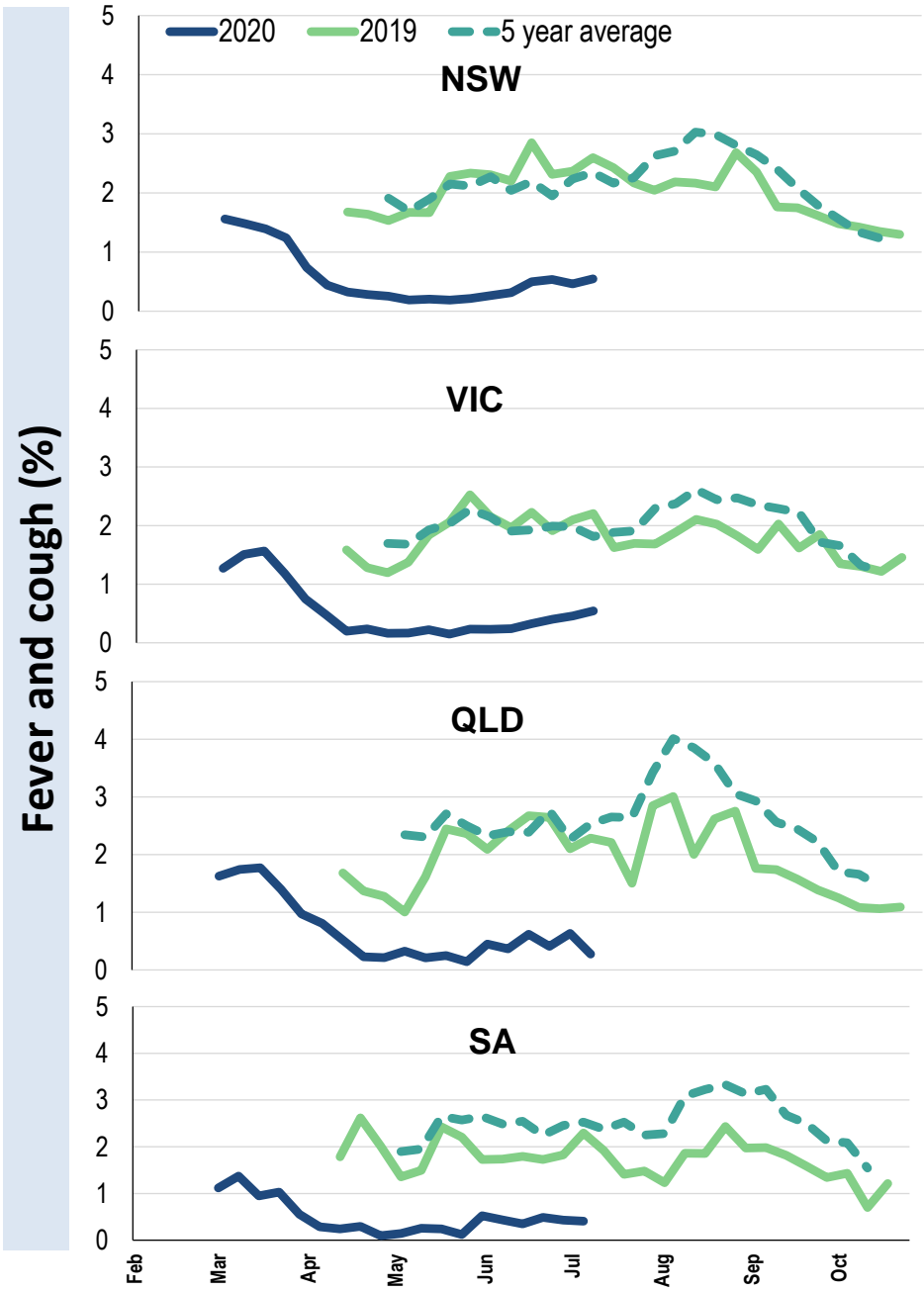
Influenza-like illness severity: <i>56.6% of participants with fever and cough sought medical advice this week</i>		
Influenza-like illness Severity	Week ending 05 July 2020 number (%)	Week ending 28 June 2020 number (%)
Number of participants	70301 (100%)	71798 (100%)
Fever & cough	272 (0.4%)	280 (0.4%)
Fever, cough & time-off normal duties	166 (0.2%)	194 (0.3%)
Fever, cough & 3 or more days off work/normal duties	108 (0.2%)	129 (0.2%)
Number of participants with fever and cough	272 (100%)	280 (100%)
*Sought medical advice for fever and cough	154 (56.6%)	170 (60.7%)
Admitted to hospital	4 (1.5%)	1 (0.4%)
Tested for influenza	41 (15.1%)	51 (18.2%)
Tested, result positive for influenza	4 (1.5%)	3 (1.1%)
Tested for coronavirus (COVID-19)	122 (44.9%)	151 (53.9%)
Tested, result positive for coronavirus (COVID-19)	0 (0%)	0 (0%)

*Includes those who sought medical advice from a general practitioner, COVID-19 clinic, emergency department, or were admitted to hospital for fever & cough

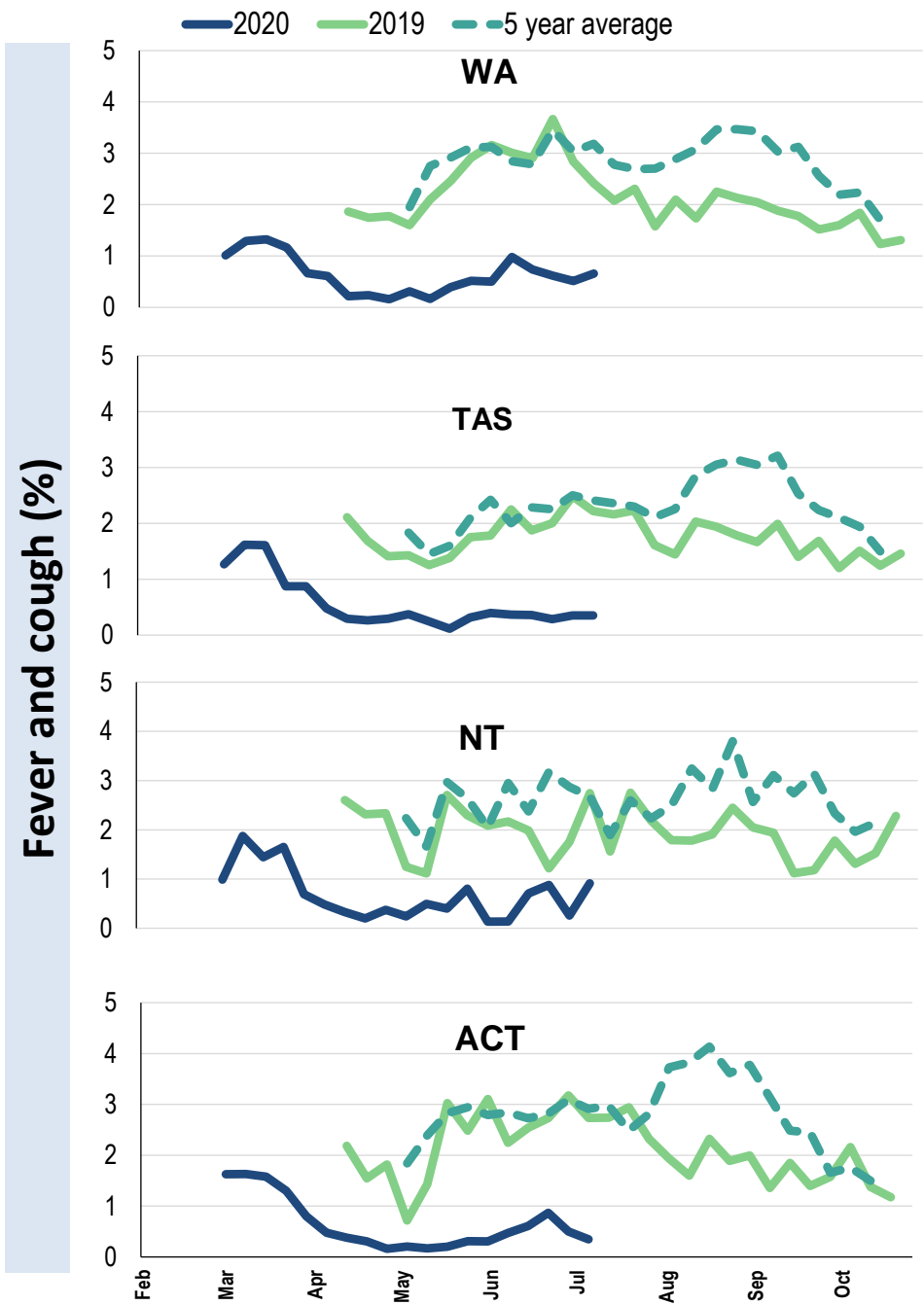
Influenza-like illness activity by age group (Australia):



Influenza-like illness activity by state/territory (age standardised):



Influenza-like illness activity by state/territory (age standardised):



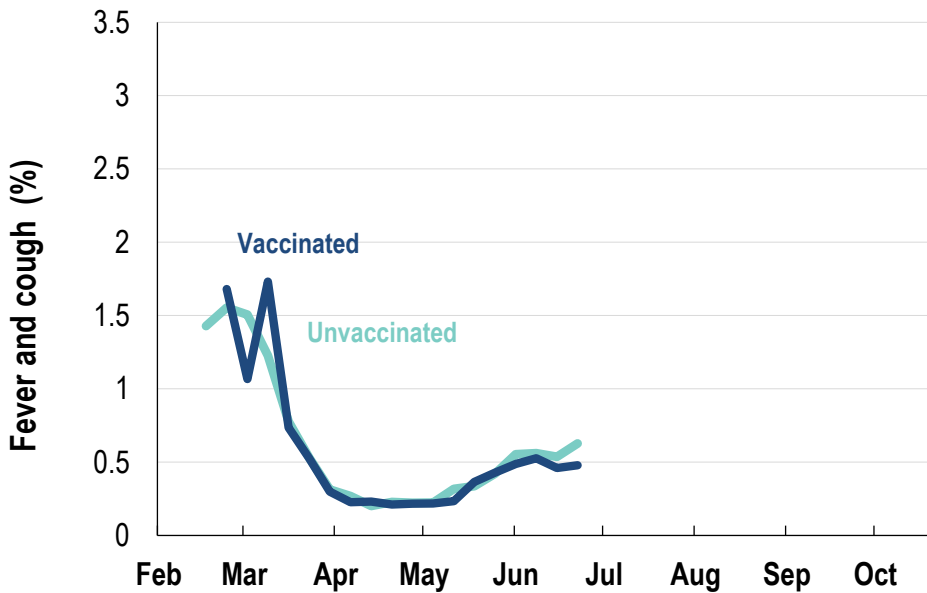
Participation:
70,301 participants (71,798 last week)

State	Participants	% Rate/100,000 population
NSW	24345	34.6% 308.3
VIC	14491	20.6% 227.9
QLD	8947	12.7% 180.8
SA	6050	8.6% 350.3
WA	7188	10.2% 277.8
TAS	4366	6.2% 836.4
NT	1125	1.6% 457.1
ACT	3789	5.4% 918.3
AUS	70301	100.0% 284.6

Vaccination rates:
Vaccination rates: 81.4% overall

Vaccinated participants:	%
<5 years	77.1
5-17 years	60.1
18-64 years	79.9
65+ years	93.6
Working with patients	92.7

Influenza-like illness activity by vaccination status:



* Data are age standardised in this chart

