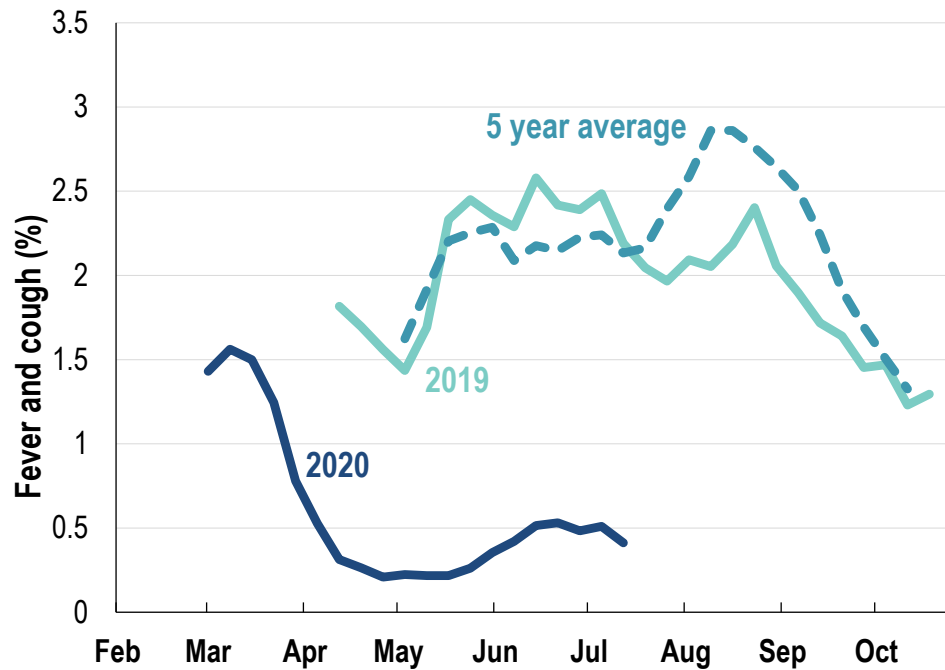




## This week influenza-like illness activity is low 69,959 participants this week

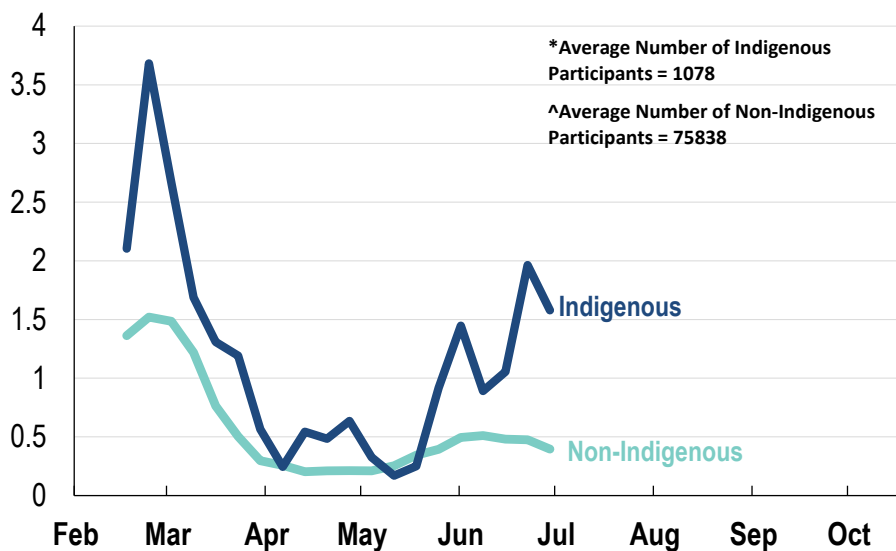
### Influenza-like illness activity:

*Fever and cough: 0.4% this week (flu-like illness activity is historically low)*



\*5 year average is calculated using 2015, 2016, 2017, 2018 and 2019 data  
^ Data are age standardised in this chart

### Influenza-like illness activity by Indigenous status:



\*Average Number of Indigenous  
Participants = 1078

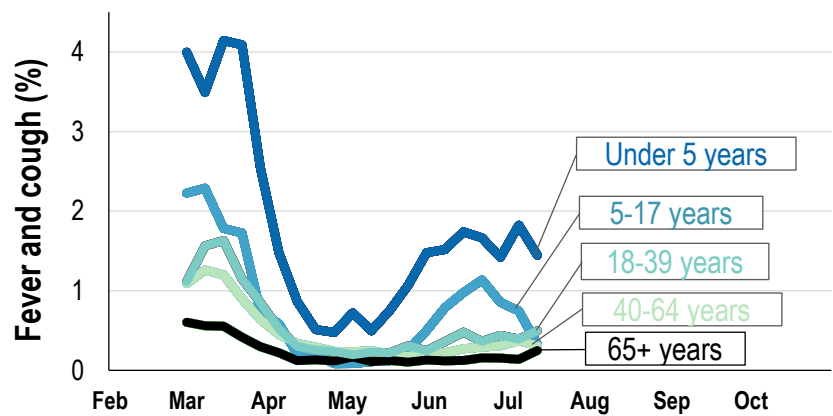
^Average Number of Non-Indigenous  
Participants = 75838

\* Data are age standardised in this chart

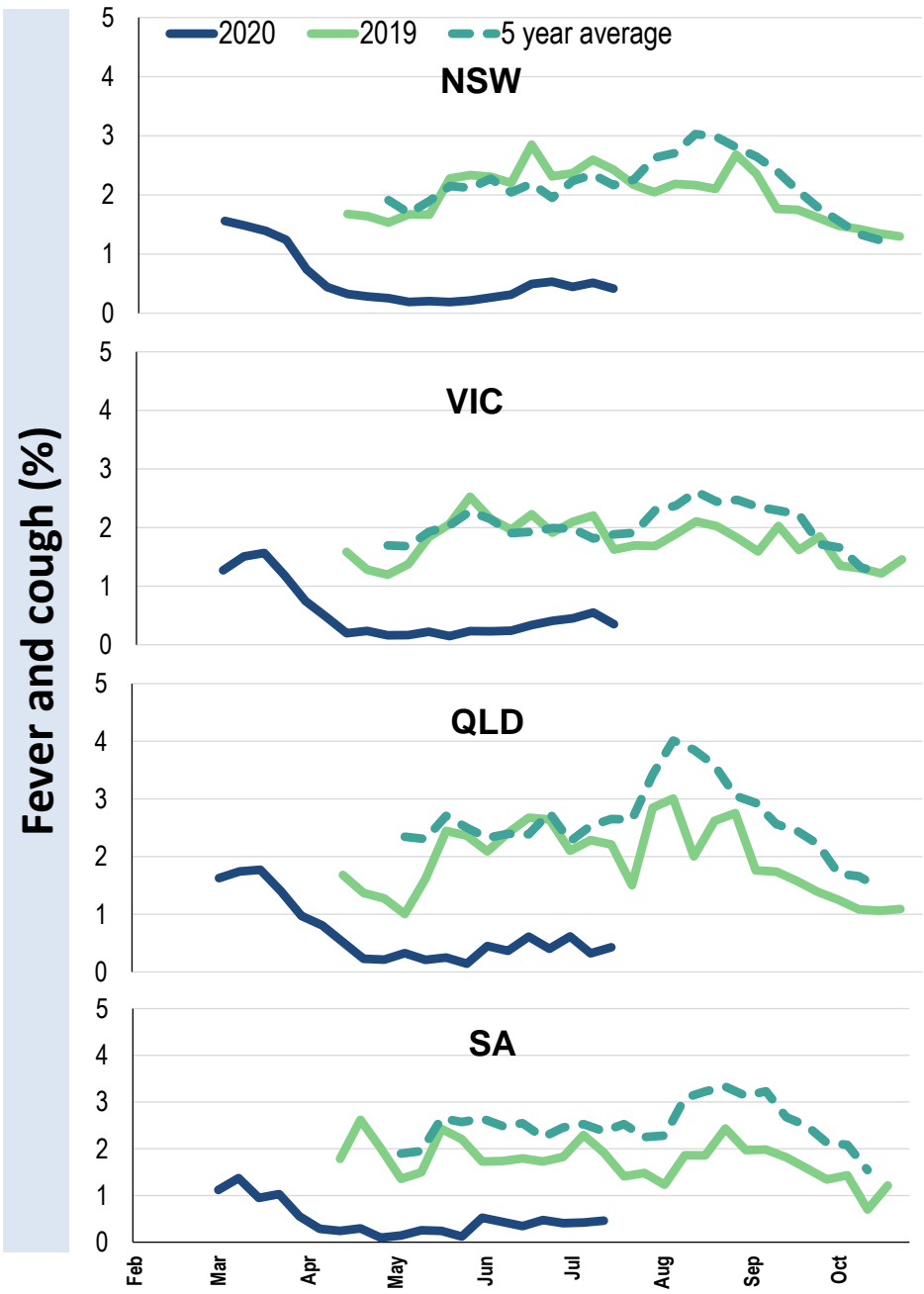
<b>Influenza-like illness severity:</b> <i>65.2% of participants with fever and cough sought medical advice this week</i>		
<b>Influenza-like illness Severity</b>	<b>Week ending 12 July 2020 number (%)</b>	<b>Week ending 05 July 2020 number (%)</b>
<b>Number of participants</b>	69959 (100%)	70301 (100%)
Fever & cough	250 (0.4%)	272 (0.4%)
Fever, cough & time-off normal duties	157 (0.2%)	168 (0.2%)
Fever, cough & 3 or more days off work/normal duties	93 (0.1%)	115 (0.2%)
<b>Number of participants with fever and cough</b>	250 (100%)	272 (100%)
*Sought medical advice for fever and cough	163 (65.2%)	160 (58.8%)
Admitted to hospital	5 (2%)	4 (1.5%)
Tested for influenza	48 (19.2%)	47 (17.3%)
Tested, result positive for influenza	3 (1.2%)	4 (1.5%)
Tested for coronavirus (COVID-19)	117 (46.8%)	139 (51.1%)
Tested, result positive for coronavirus (COVID-19)	1 (0.4%)	0 (0%)

\*Includes those who sought medical advice from a general practitioner, COVID-19 clinic, emergency department, or were admitted to hospital for fever & cough

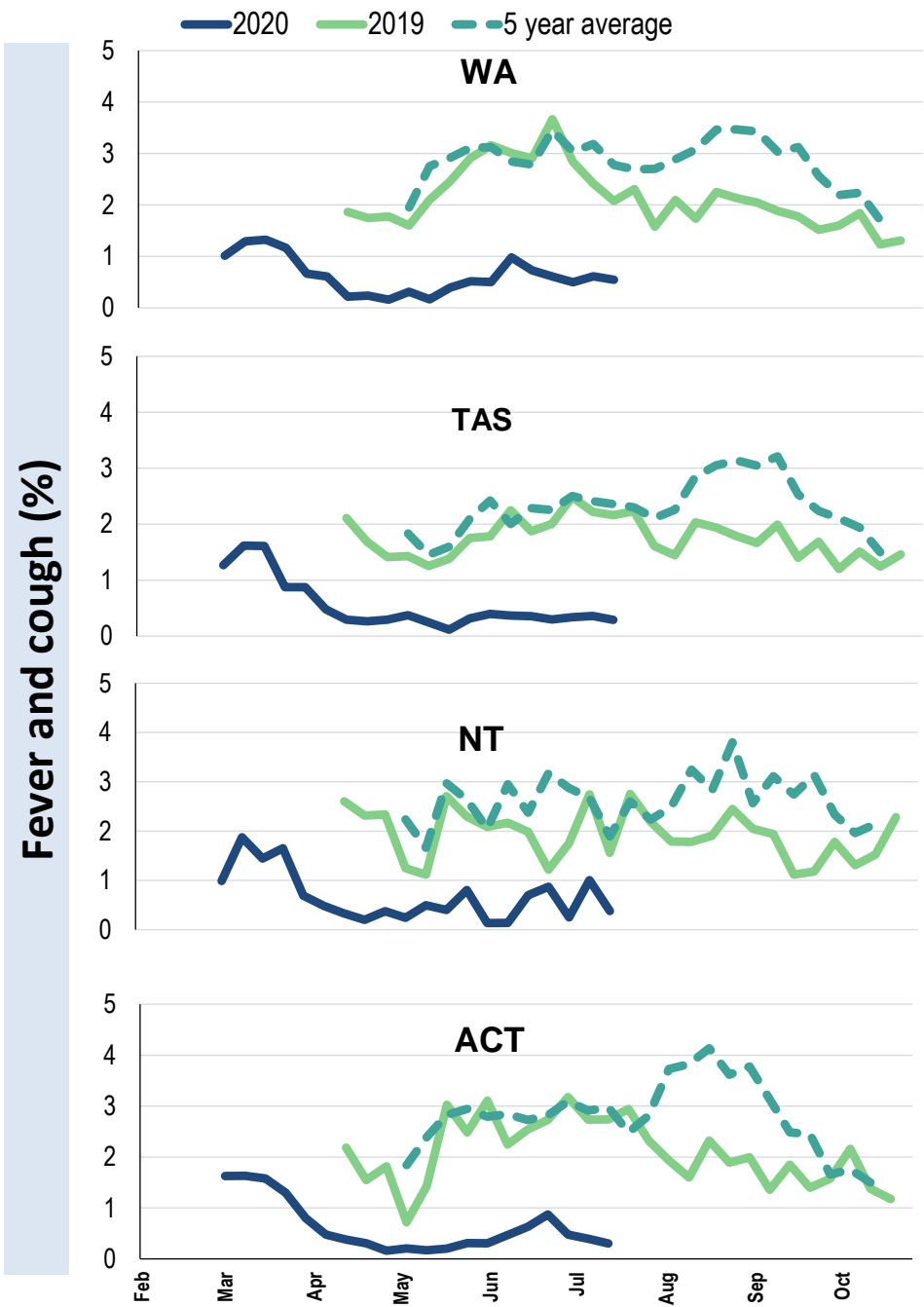
Influenza-like illness activity by age group (Australia):



Influenza-like illness activity by state/territory (age standardised):



Influenza-like illness activity by state/territory (age standardised):



Participation:

69,959 participants (70,301 last week)

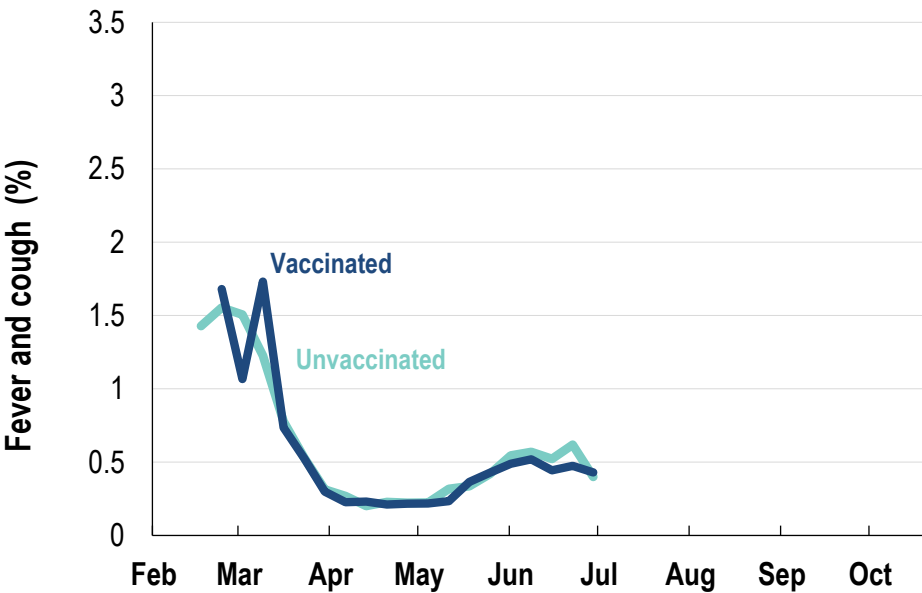
State	Participants	% Rate/100,000 population
NSW	24054	34.4% 304.6
VIC	14584	20.8% 229.3
QLD	8978	12.8% 181.4
SA	5975	8.5% 346.0
WA	7133	10.2% 275.7
TAS	4361	6.2% 835.4
NT	1093	1.6% 444.1
ACT	3781	5.4% 916.4
AUS	69959	100.0% 283.2

Vaccination rates:

Vaccination rates: 81.7% overall

Vaccinated participants:	%
<5 years	76.5
5-17 years	61.3
18-64 years	80.1
65+ years	93.8
Working with patients	92.8

Influenza-like illness activity by vaccination status:



\* Data are age standardised in this chart

