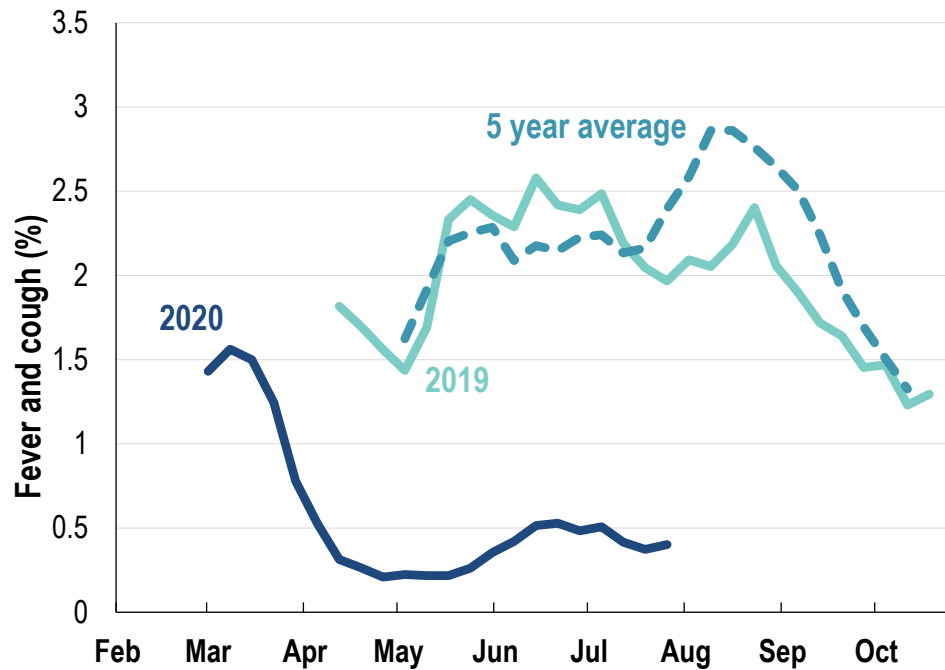




This week influenza-like illness activity is low 70,665 participants this week

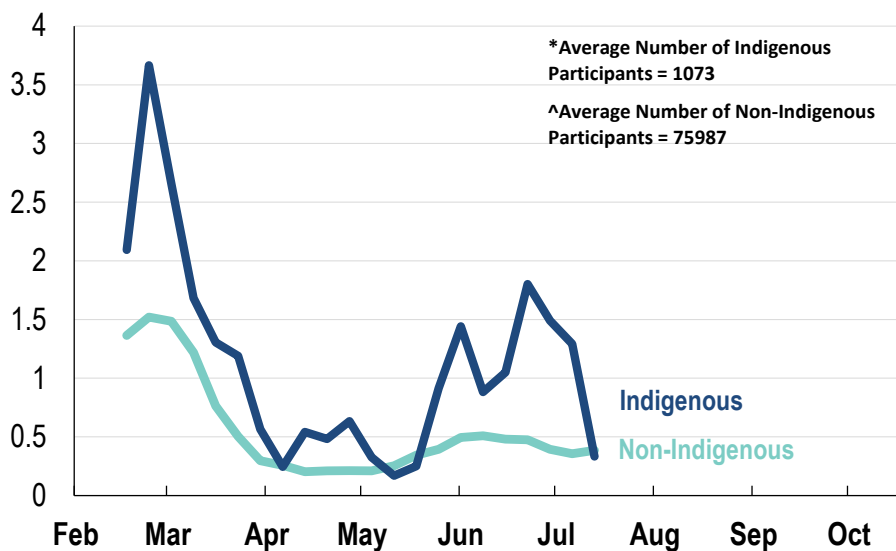
Influenza-like illness activity:

Fever and cough: 0.4% this week (flu-like illness activity is historically low)



*5 year average is calculated using 2015, 2016, 2017, 2018 and 2019 data
^ Data are age standardised in this chart

Influenza-like illness activity by Indigenous status:



*Average Number of Indigenous Participants = 1073

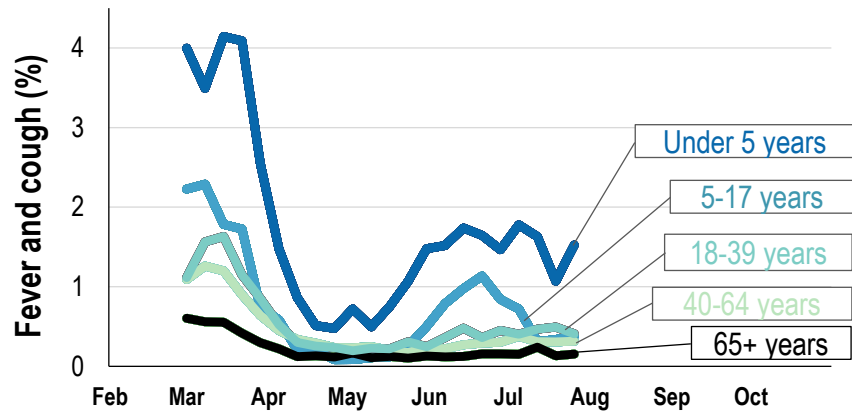
^Average Number of Non-Indigenous Participants = 75987

* Data are age standardised in this chart

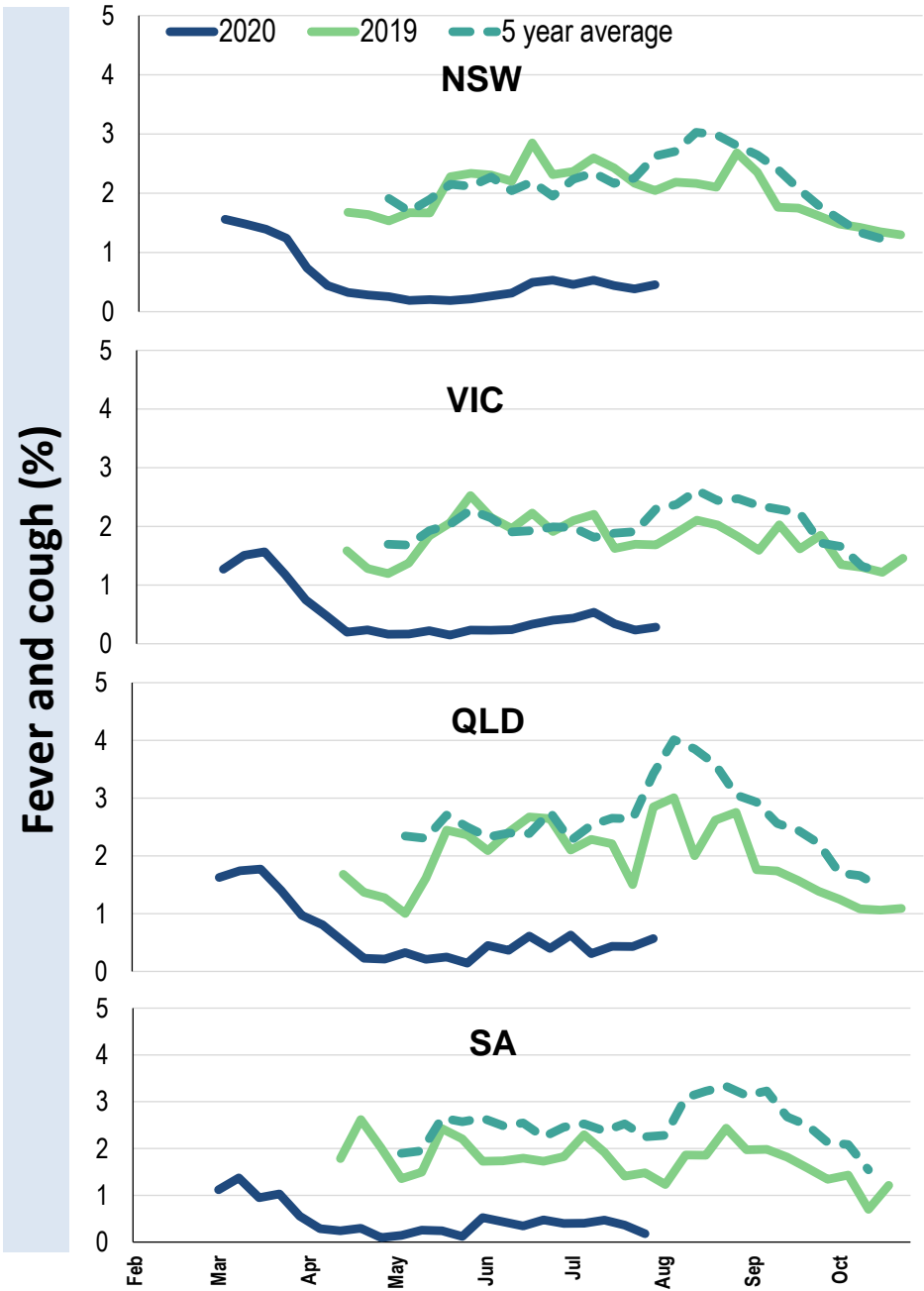
Influenza-like illness severity: <i>59.3% of participants with fever and cough sought medical advice this week</i>		
Influenza-like illness Severity	Week ending 26 July 2020 number (%)	Week ending 19 July 2020 number (%)
Number of participants	70665 (100%)	70376 (100%)
Fever & cough	231 (0.3%)	219 (0.3%)
Fever, cough & time-off normal duties	150 (0.2%)	138 (0.2%)
Fever, cough & 3 or more days off work/normal duties	89 (0.1%)	95 (0.1%)
Number of participants with fever and cough	231 (100%)	219 (100%)
*Sought medical advice for fever and cough	137 (59.3%)	149 (68%)
Admitted to hospital	2 (0.9%)	2 (0.9%)
Tested for influenza	37 (16%)	56 (25.6%)
Tested, result positive for influenza	1 (0.4%)	2 (0.9%)
Tested for coronavirus (COVID-19)	113 (48.9%)	133 (60.7%)
Tested, result positive for coronavirus (COVID-19)	1 (0.4%)	1 (0.5%)

*Includes those who sought medical advice from a general practitioner, COVID-19 clinic, emergency department, or were admitted to hospital for fever & cough

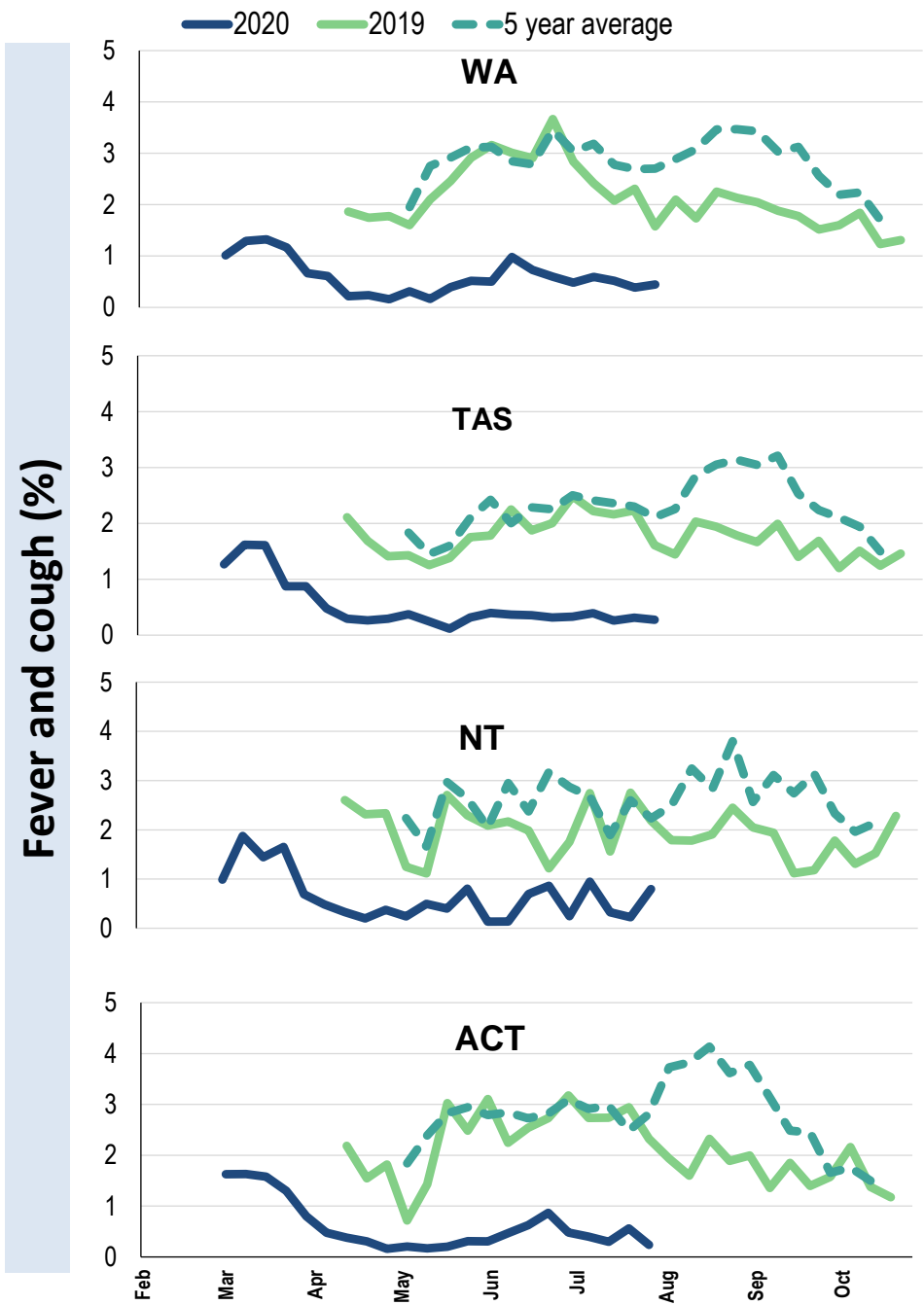
Influenza-like illness activity by age group (Australia):



Influenza-like illness activity by state/territory (age standardised):



Influenza-like illness activity by state/territory (age standardised):



Participation:

70,665 participants (70,376 last week)

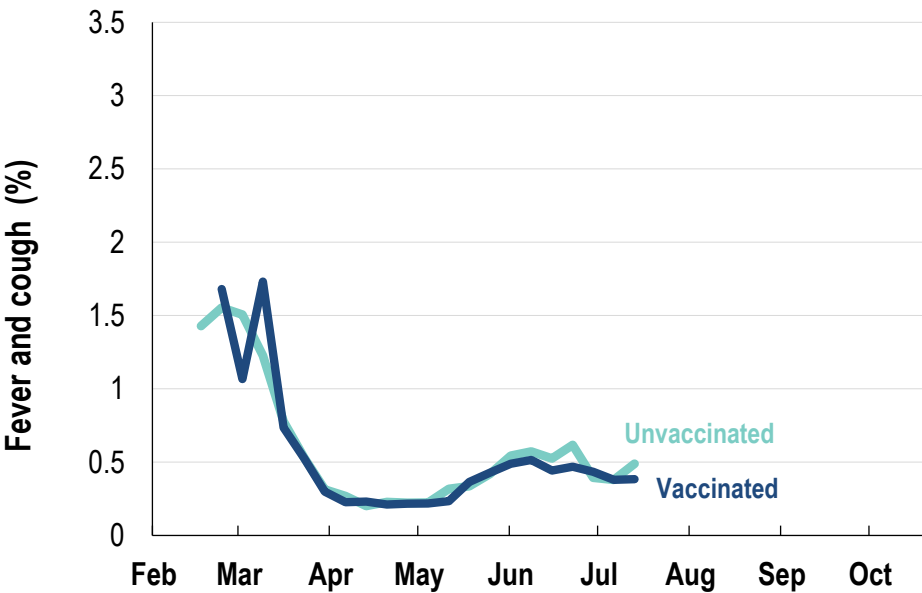
State	Participants	% Rate/100,000 population
NSW	24722	35.0% 313.1
VIC	14479	20.5% 227.7
QLD	8932	12.6% 180.5
SA	6016	8.5% 348.4
WA	7207	10.2% 278.6
TAS	4477	6.3% 857.7
NT	1118	1.6% 454.3
ACT	3714	5.3% 900.1
AUS	70665	100.0% 286.1

Vaccination rates:

Vaccination rates: 82.1% overall

Vaccinated participants:	%
<5 years	77.1
5-17 years	61.8
18-64 years	80.7
65+ years	93.9
Working with patients	93.1

Influenza-like illness activity by vaccination status:



* Data are age standardised in this chart

