



FluTracking  
Tracking COVID-19

## Weekly Interim Report: Australia

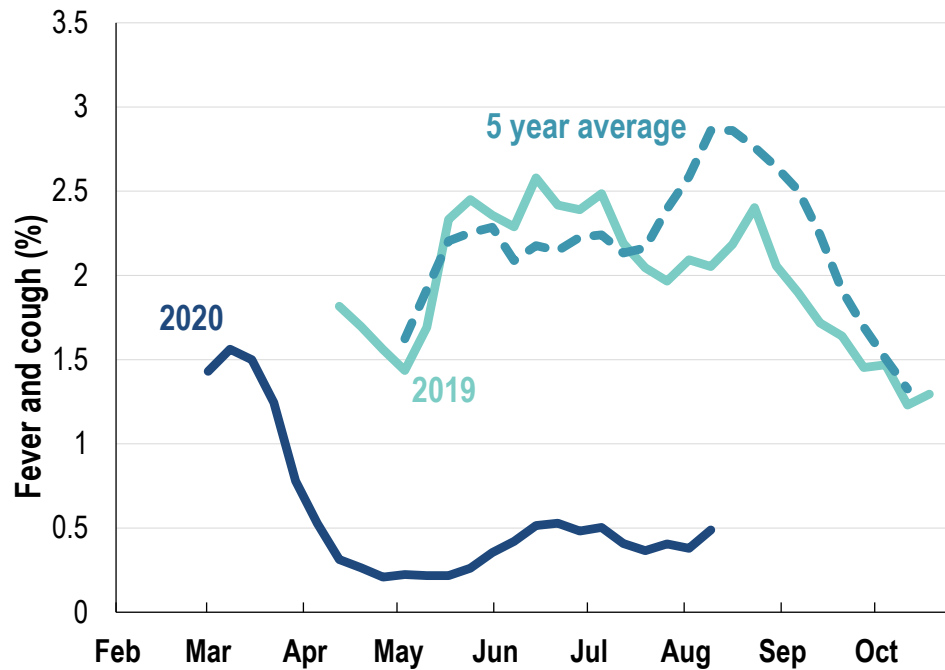
Week ending 09 August 2020

(Data received up to 09:00 AM, Thursday 13 August)

**This week influenza-like illness activity is low**  
**69,840 participants this week**

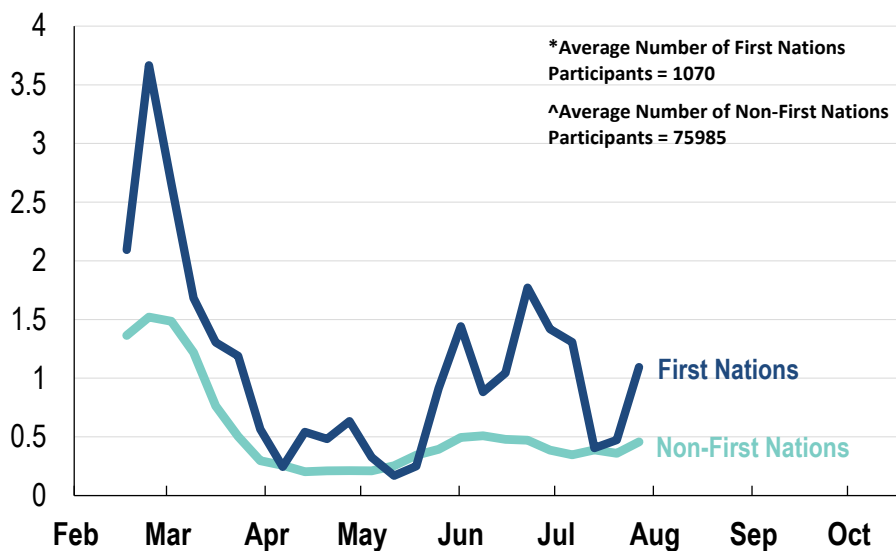
### Influenza-like illness activity:

*Fever and cough: 0.5% this week (flu-like illness activity is historically low)*



\*5 year average is calculated using 2015, 2016, 2017, 2018 and 2019 data  
^ Data are age standardised in this chart

### Influenza-like illness activity by Aboriginal and Torres Strait Islander status:



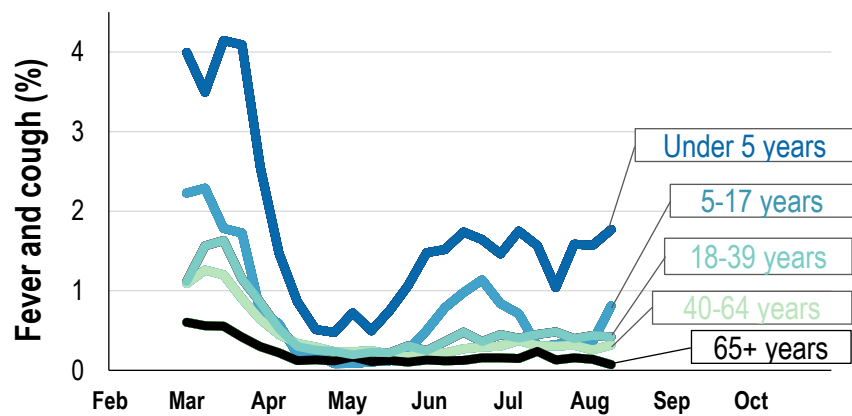
\* Data are age standardised in this chart

**Influenza-like illness severity:**  
**58.1% of participants with fever and cough sought medical advice this week**

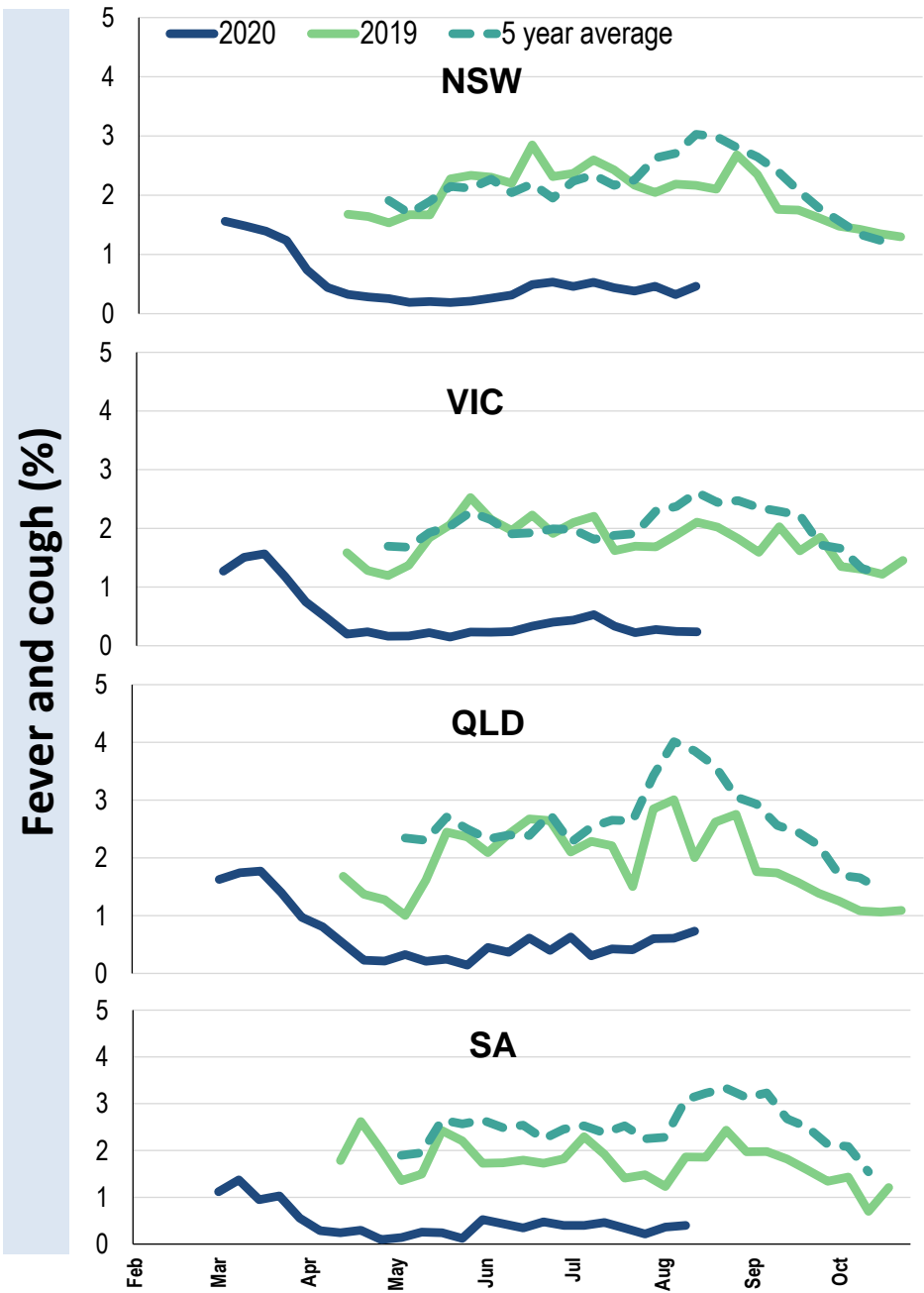
Influenza-like illness Severity	Week ending 09 August 2020 number (%)	Week ending 02 August 2020 number (%)
<b>Number of participants</b>	69840 (100%)	69980 (100%)
Fever & cough	248 (0.4%)	205 (0.3%)
Fever, cough & time-off normal duties	165 (0.2%)	136 (0.2%)
Fever, cough & 3 or more days off work/normal duties	101 (0.1%)	89 (0.1%)
<b>Number of participants with fever and cough</b>	248 (100%)	205 (100%)
*Sought medical advice for fever and cough	144 (58.1%)	138 (67.3%)
Admitted to hospital	1 (0.4%)	8 (3.9%)
Tested for influenza	33 (13.3%)	41 (20%)
Tested, result positive for influenza	1 (0.4%)	2 (1%)
Tested for coronavirus (COVID-19)	114 (46%)	127 (62%)
Tested, result positive for coronavirus (COVID-19)	2 (0.8%)	1 (0.5%)

\*Includes those who sought medical advice from a general practitioner, COVID-19 clinic, emergency department, or were admitted to hospital for fever & cough

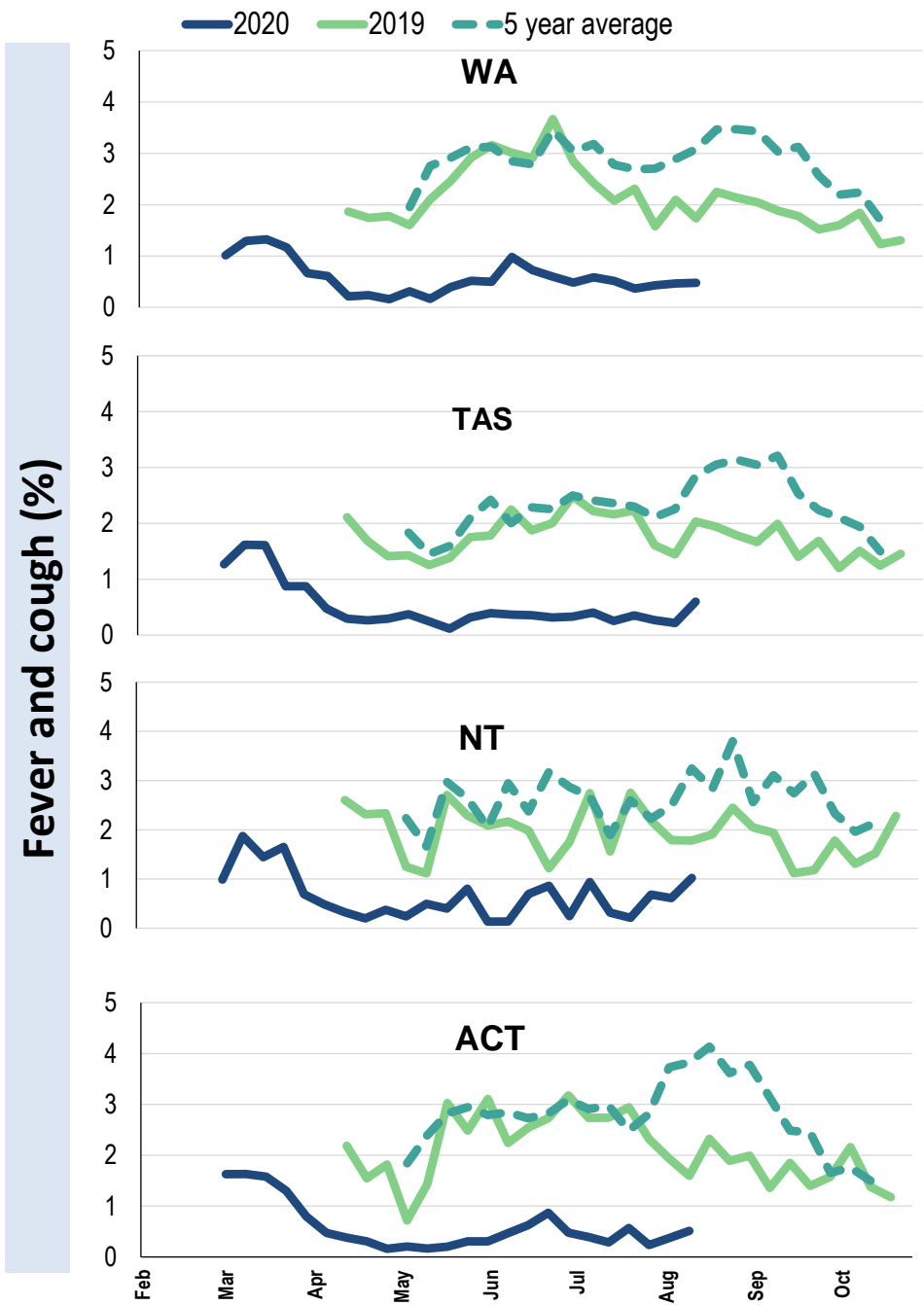
Influenza-like illness activity by age group (Australia):



Influenza-like illness activity by state/territory (age standardised):



Influenza-like illness activity by state/territory (age standardised):



Participation:

69,840 participants (69,980 last week)

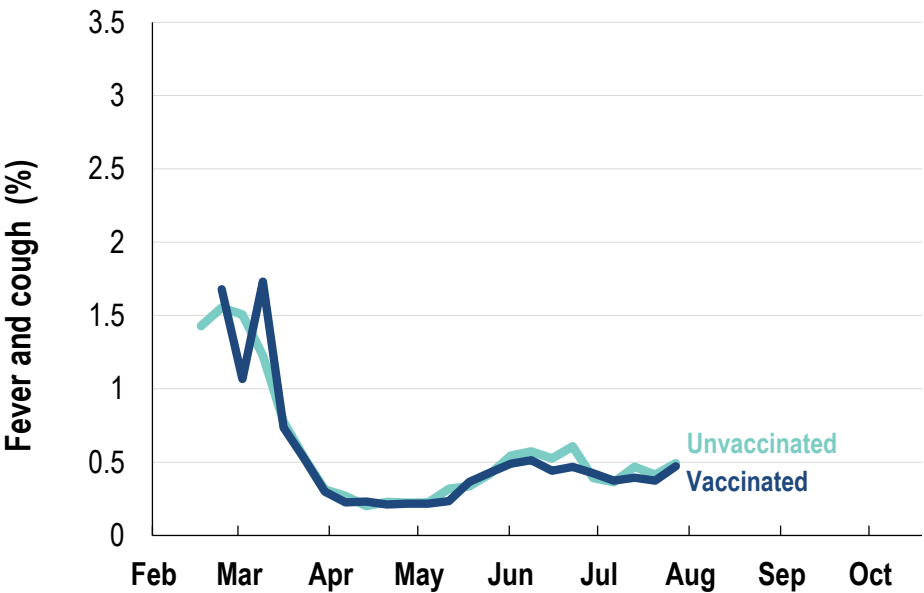
State	Participants	% Rate/100,000 population
NSW	24383	34.9% 308.8
VIC	14180	20.3% 223.0
QLD	8844	12.7% 178.7
SA	6025	8.6% 348.9
WA	7172	10.3% 277.2
TAS	4358	6.2% 834.9
NT	1116	1.6% 453.5
ACT	3762	5.4% 911.8
AUS	69840	100.0% 282.7

Vaccination rates:

Vaccination rates: 82.3% overall

Vaccinated participants:	%
<5 years	78.0
5-17 years	61.9
18-64 years	80.9
65+ years	93.9
Working with patients	93.2

Influenza-like illness activity by vaccination status:



\* Data are age standardised in this chart



FluTracking  
Tracking COVID-19