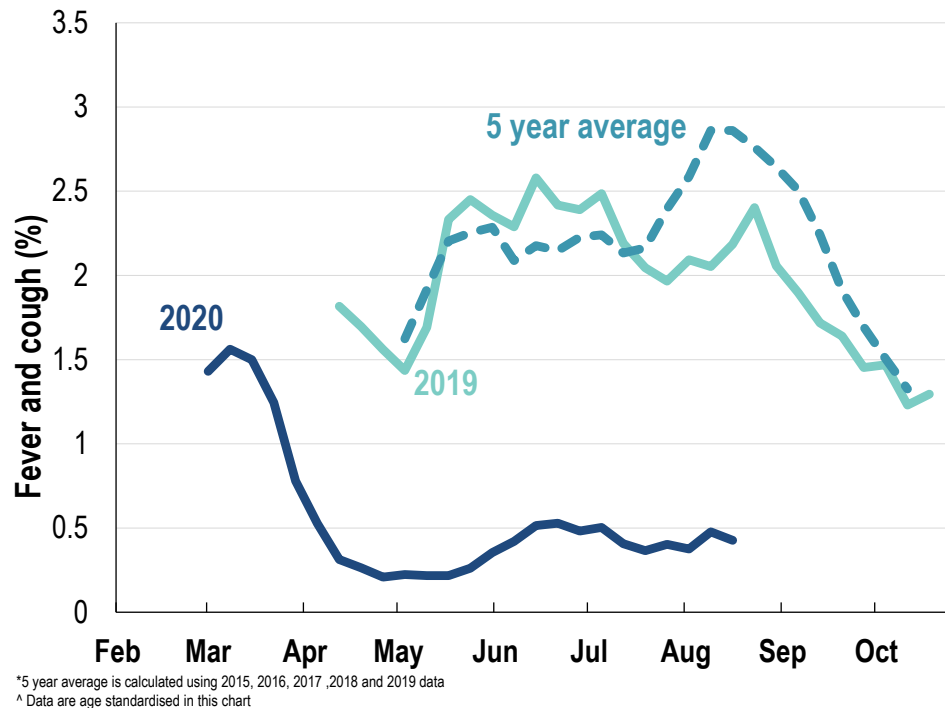




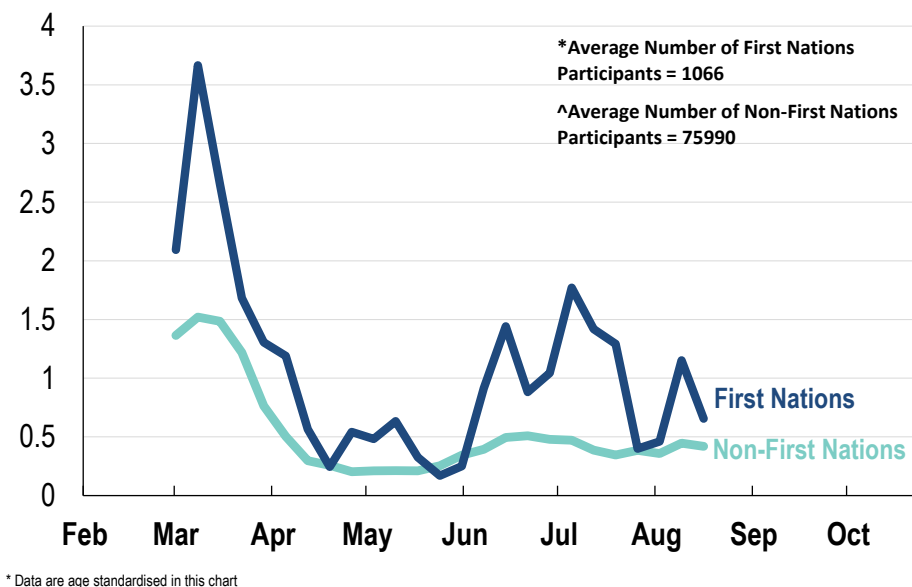
**This week influenza-like illness activity is low
69,664 participants this week**

Influenza-like illness activity:

Fever and cough: 0.43% this week (flu-like illness activity is historically low)



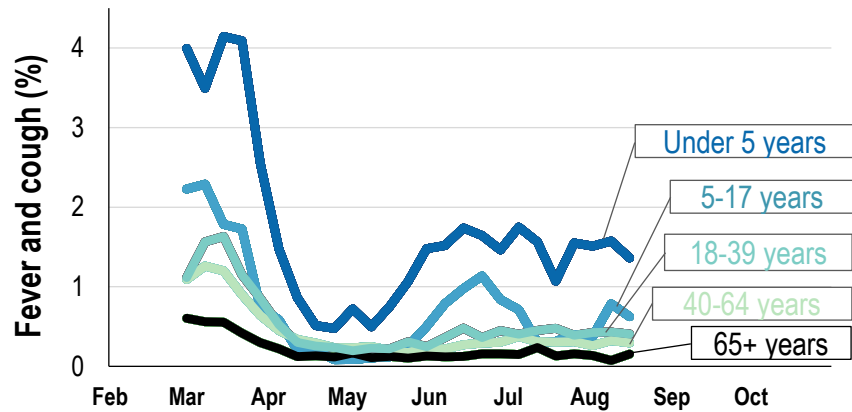
Influenza-like illness activity by Aboriginal and Torres Strait Islander status:



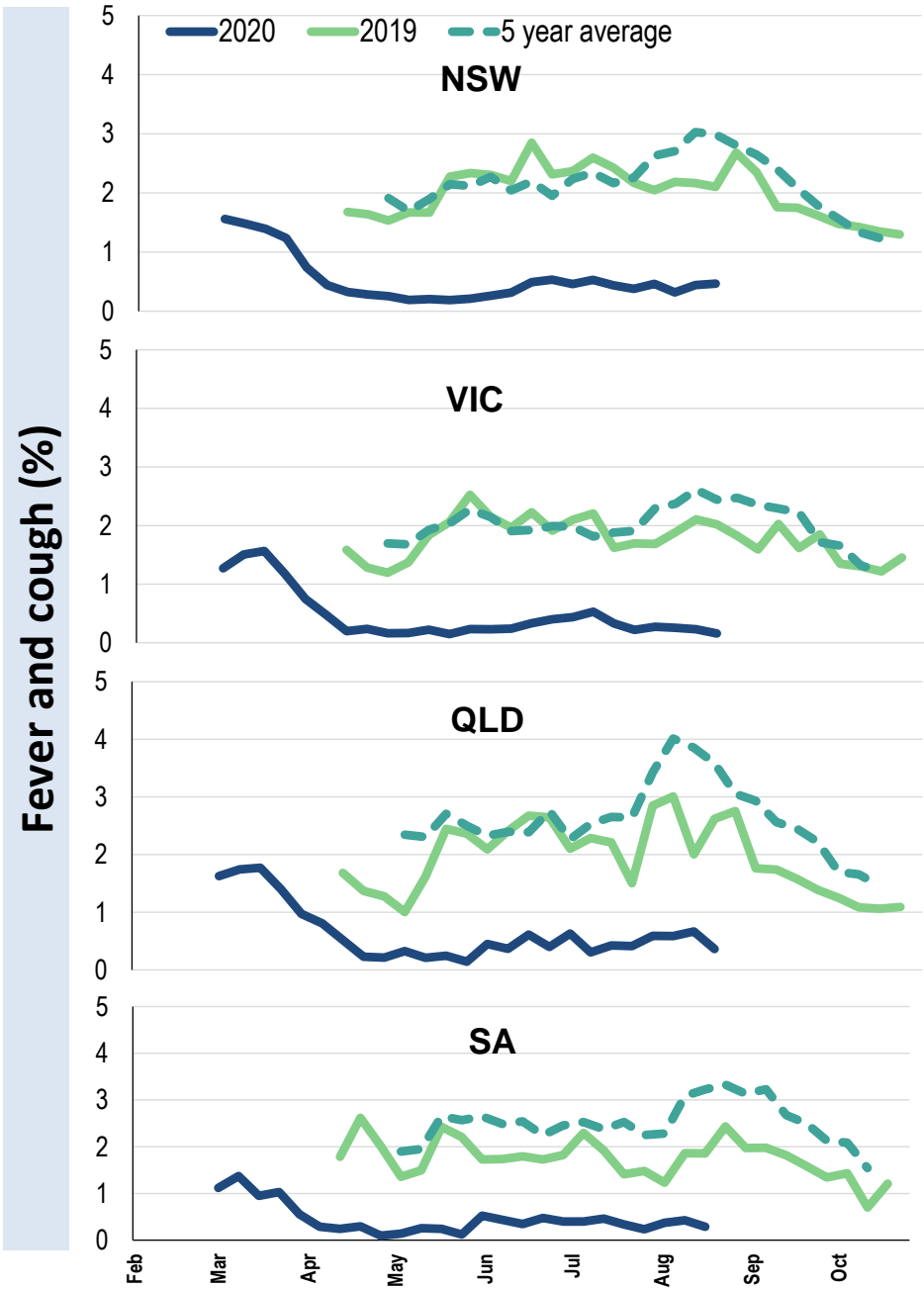
Influenza-like illness severity: <i>57.3% of participants with fever and cough sought medical advice this week</i>		
Influenza-like illness Severity	Week ending 16 August 2020 number (%)	Week ending 09 August 2020 number (%)
Number of participants	69664 (100%)	69840 (100%)
Fever & cough	234 (0.3%)	249 (0.4%)
Fever, cough & time-off normal duties	167 (0.2%)	174 (0.2%)
Fever, cough & 3 or more days off work/normal duties	92 (0.1%)	112 (0.2%)
Number of participants with fever and cough	234 (100%)	249 (100%)
*Sought medical advice for fever and cough	134 (57.3%)	149 (59.8%)
Admitted to hospital	5 (2.1%)	3 (1.2%)
Tested for influenza	24 (10.3%)	37 (14.9%)
Tested, result positive for influenza	1 (0.4%)	1 (0.4%)
Tested for coronavirus (COVID-19)	119 (50.9%)	136 (54.6%)
Tested, result positive for coronavirus (COVID-19)	0 (0%)	3 (1.2%)

*Includes those who sought medical advice from a general practitioner, COVID-19 clinic, emergency department, or were admitted to hospital for fever & cough

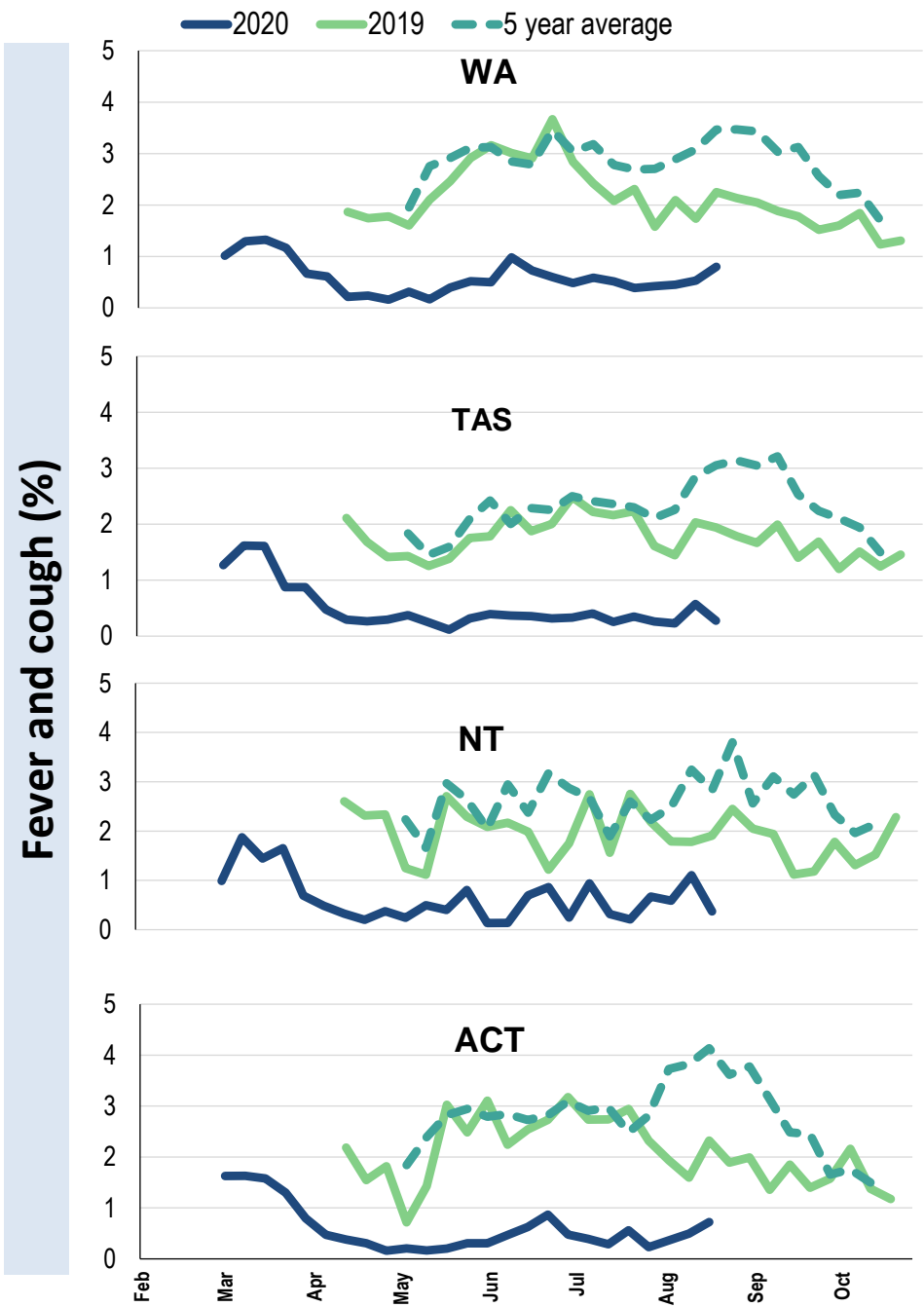
Influenza-like illness activity by age group (Australia):



Influenza-like illness activity by state/territory (age standardised):



Influenza-like illness activity by state/territory (age standardised):



Participation:

69,664 participants (69,840 last week)

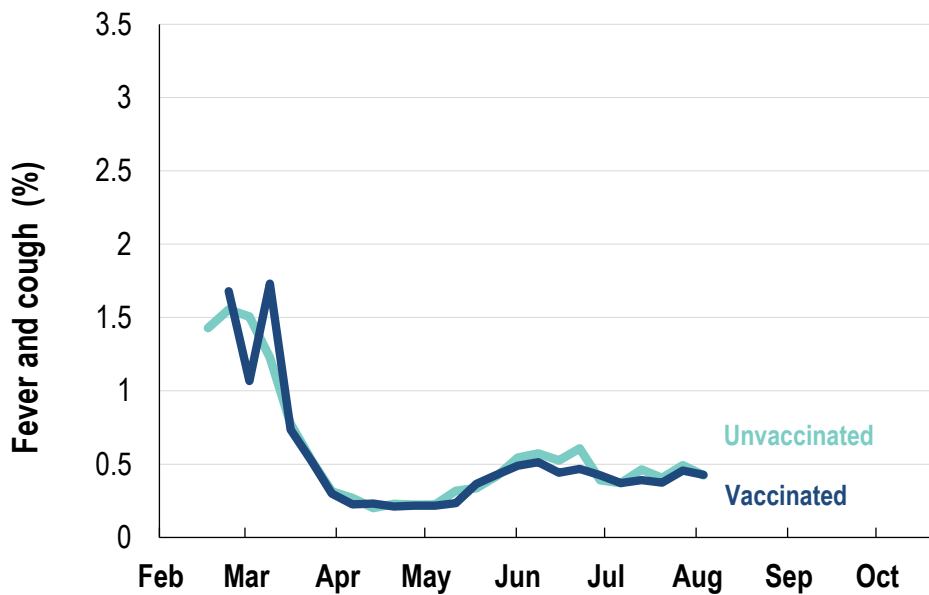
State	Participants	%	Rate/100,000 population
NSW	24075	34.6%	304.9
VIC	14220	20.4%	223.6
QLD	8776	12.6%	177.3
SA	6154	8.8%	356.4
WA	7185	10.3%	277.7
TAS	4398	6.3%	842.5
NT	1138	1.6%	462.4
ACT	3718	5.3%	901.1
AUS	69664	100.0%	282.0

Vaccination rates:

Vaccination rates: 82.5% overall

Vaccinated participants:	%
<5 years	78.6
5-17 years	62.1
18-64 years	81.1
65+ years	94.1
Working with patients	93.4

Influenza-like illness activity by vaccination status:



* Data are age standardised in this chart

