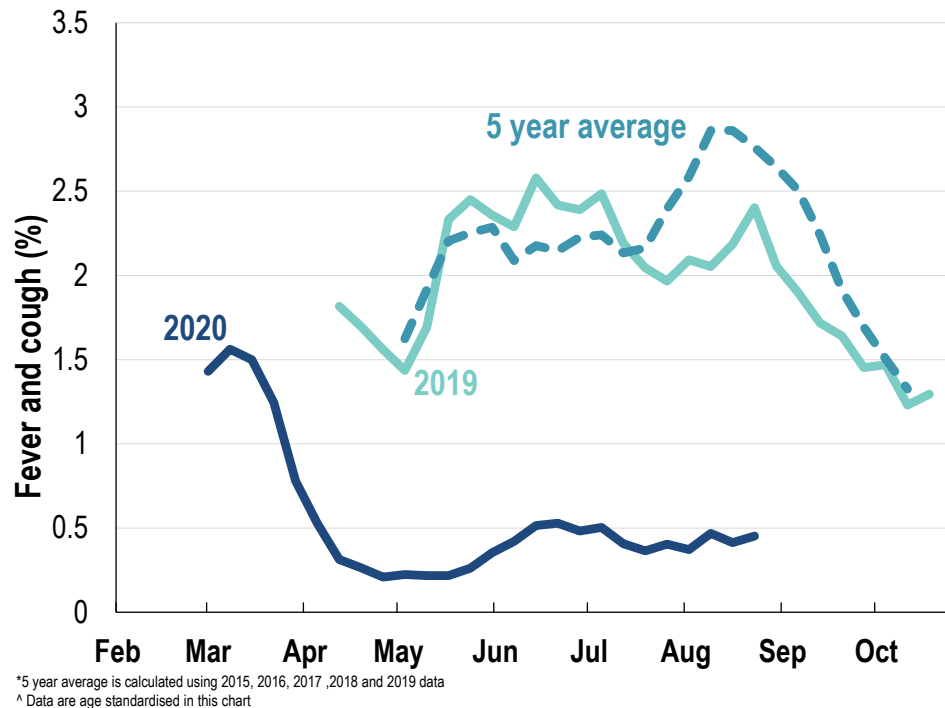




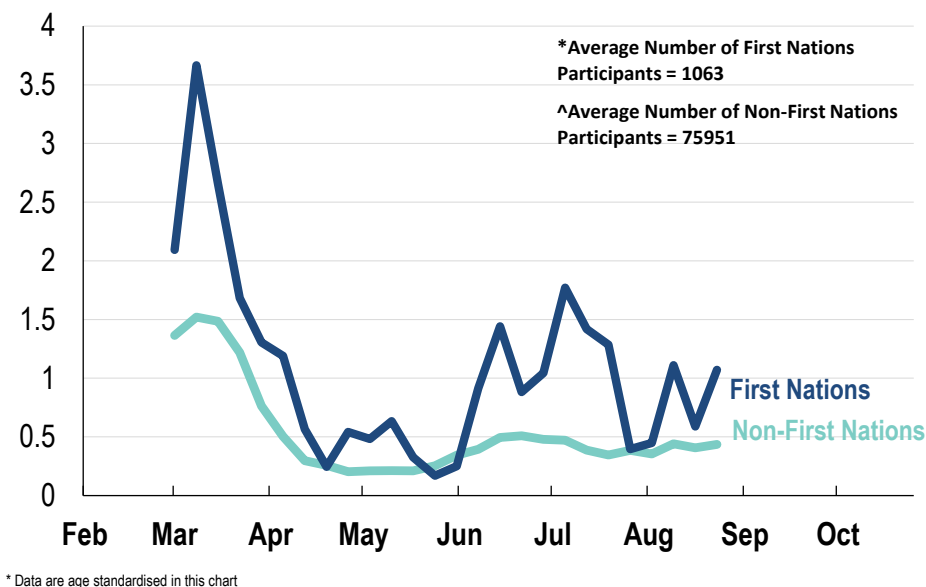
This week influenza-like illness activity is low
68,923 participants this week

Influenza-like illness activity:

Fever and cough: 0.45% this week (flu-like illness activity is historically low)



Influenza-like illness activity by Aboriginal and Torres Strait Islander status:

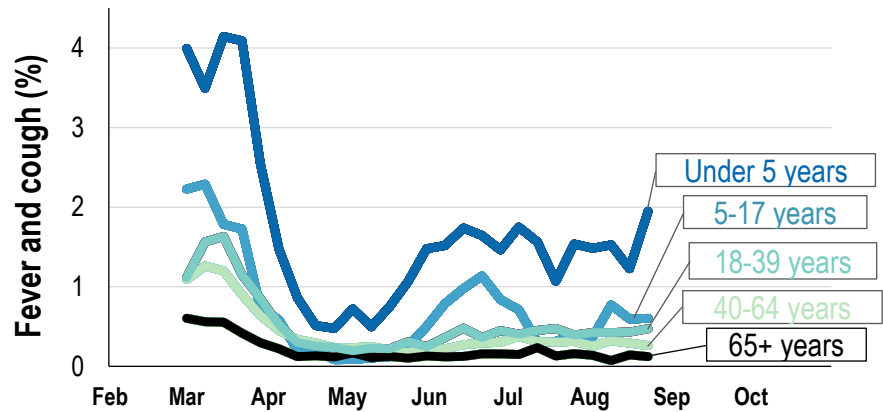


Influenza-like illness severity:
65.2% of participants with fever and cough sought medical advice this week

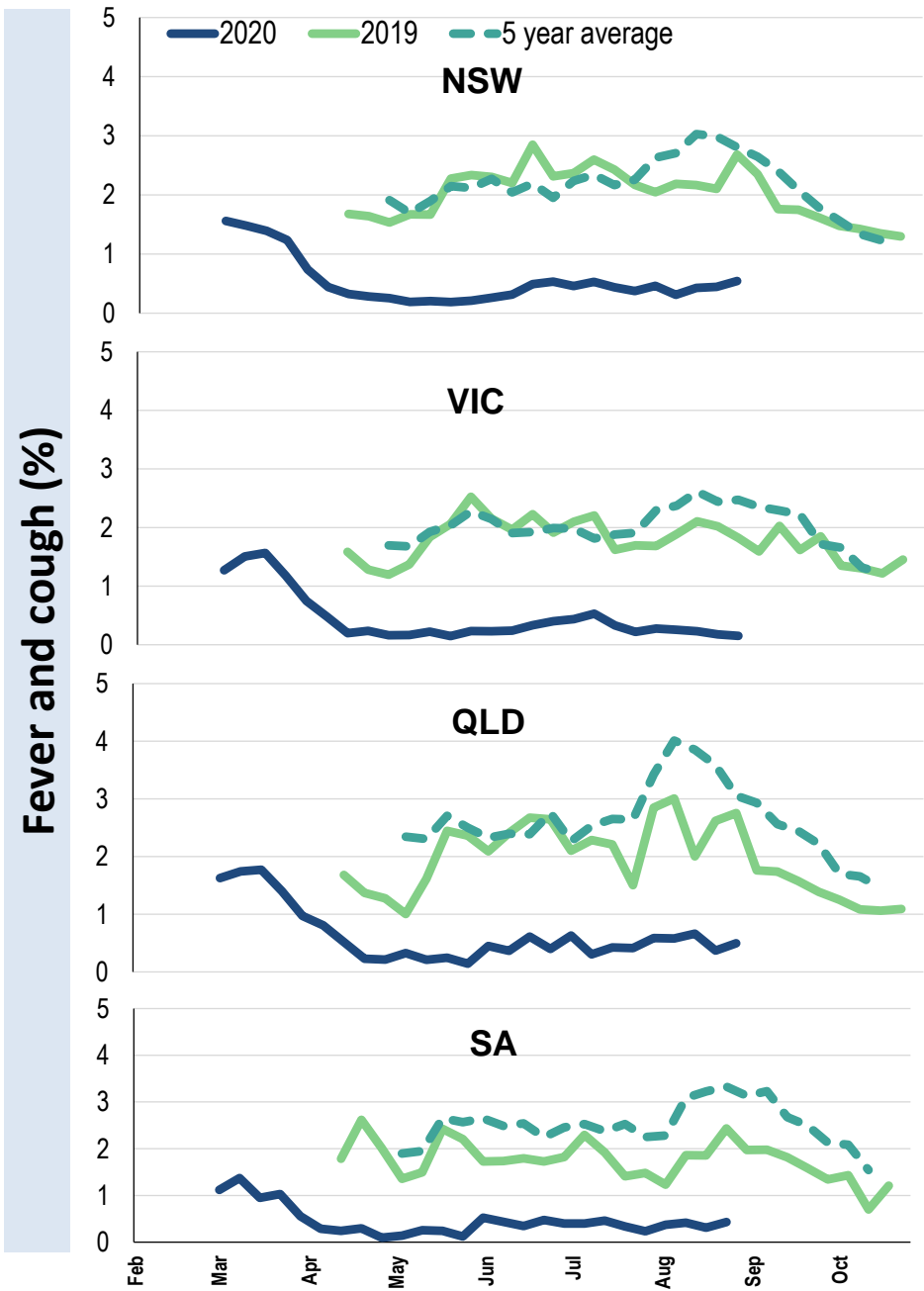
Influenza-like illness Severity	Week ending 23 August 2020 number (%)	Week ending 16 August 2020 number (%)
Number of participants	68923 (100%)	69664 (100%)
Fever & cough	230 (0.3%)	233 (0.3%)
Fever, cough & time-off normal duties	158 (0.2%)	170 (0.2%)
Fever, cough & 3 or more days off work/normal duties	103 (0.1%)	97 (0.1%)
Number of participants with fever and cough	230 (100%)	233 (100%)
*Sought medical advice for fever and cough	150 (65.2%)	142 (60.9%)
Admitted to hospital	4 (1.7%)	5 (2.1%)
Tested for influenza	32 (13.9%)	34 (14.6%)
Tested, result positive for influenza	1 (0.4%)	1 (0.4%)
Tested for coronavirus (COVID-19)	116 (50.4%)	139 (59.7%)
Tested, result positive for coronavirus (COVID-19)	0 (0%)	0 (0%)

*Includes those who sought medical advice from a general practitioner, COVID-19 clinic, emergency department, or were admitted to hospital for fever & cough

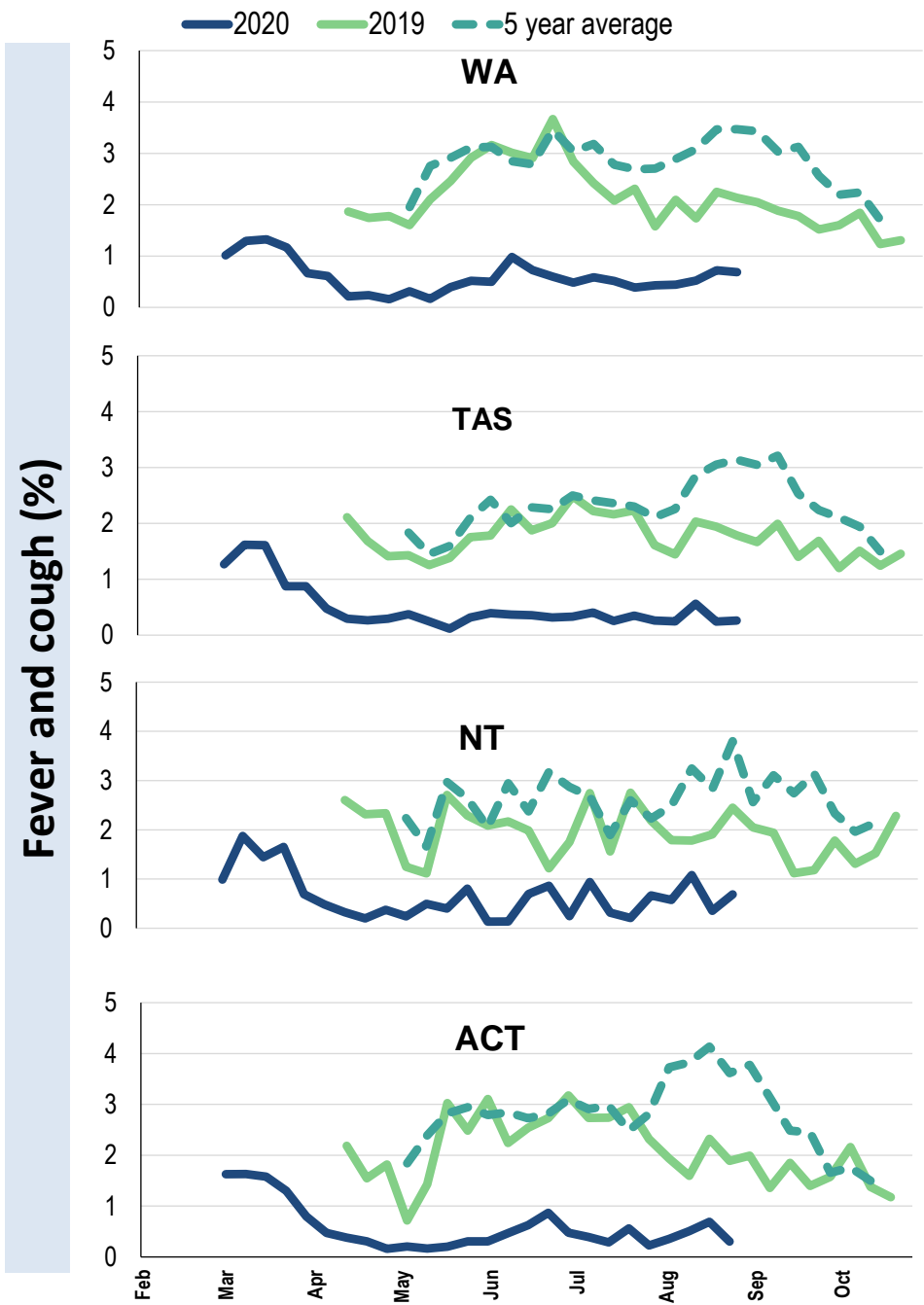
Influenza-like illness activity by age group (Australia):



Influenza-like illness activity by state/territory (age standardised):



Influenza-like illness activity by state/territory (age standardised):



Participation:

68,923 participants (69,664 last week)

State	Participants	% Rate/100,000 population
NSW	23769	34.5% 301.0
VIC	14181	20.6% 223.0
QLD	8775	12.7% 177.3
SA	5966	8.7% 345.5
WA	7120	10.3% 275.2
TAS	4308	6.3% 825.3
NT	1128	1.6% 458.4
ACT	3676	5.3% 890.9
AUS	68923	100.0% 279.0

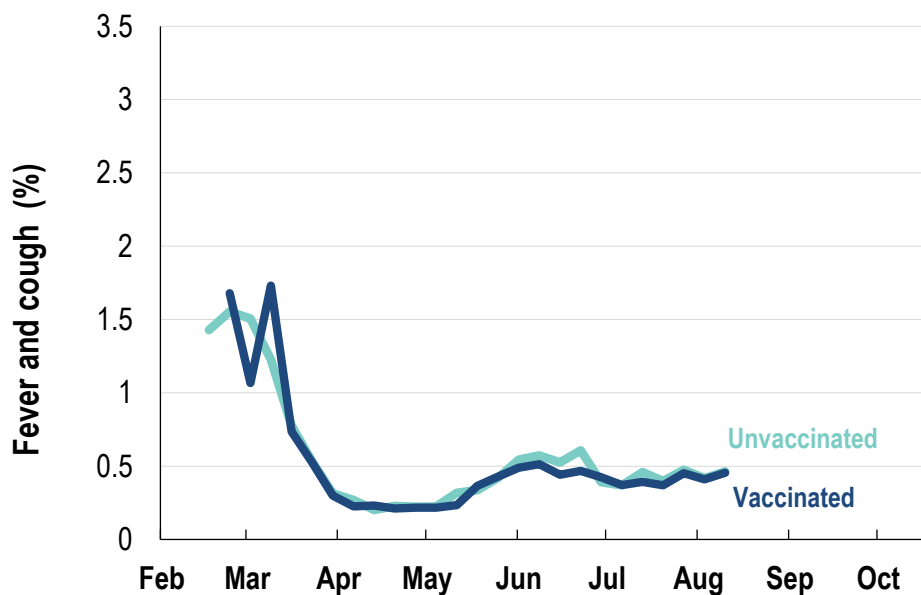
Vaccination rates:

Vaccination rates: 82.5% overall

Vaccinated participants:

	%
<5 years	77.7
5-17 years	61.9
18-64 years	81.1
65+ years	94.0
Working with patients	93.4

Influenza-like illness activity by vaccination status:



* Data are age standardised in this chart



FluTracking
Tracking COVID-19