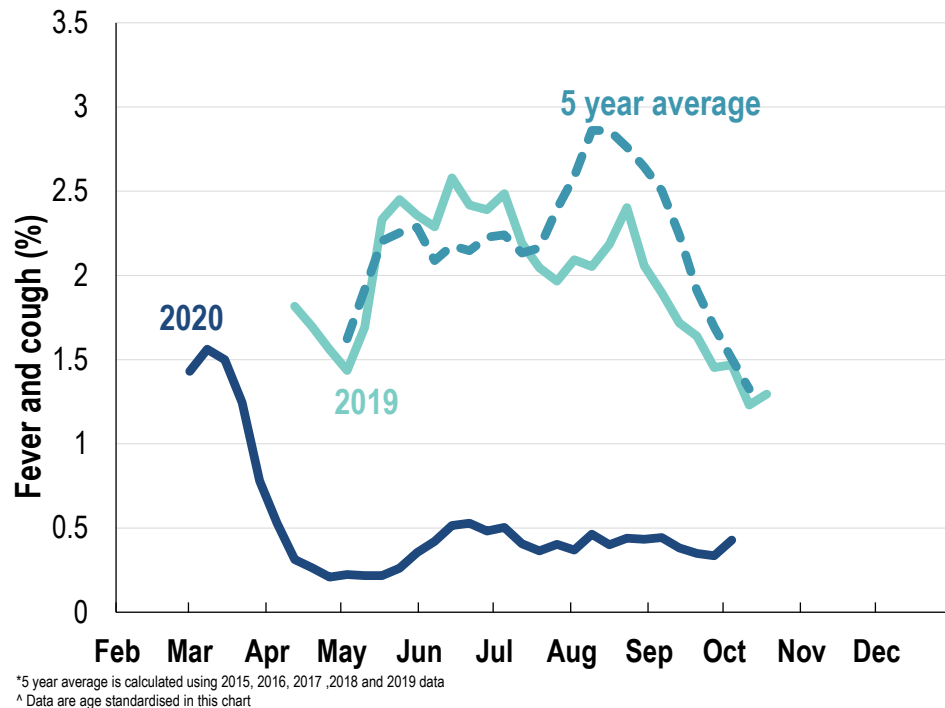




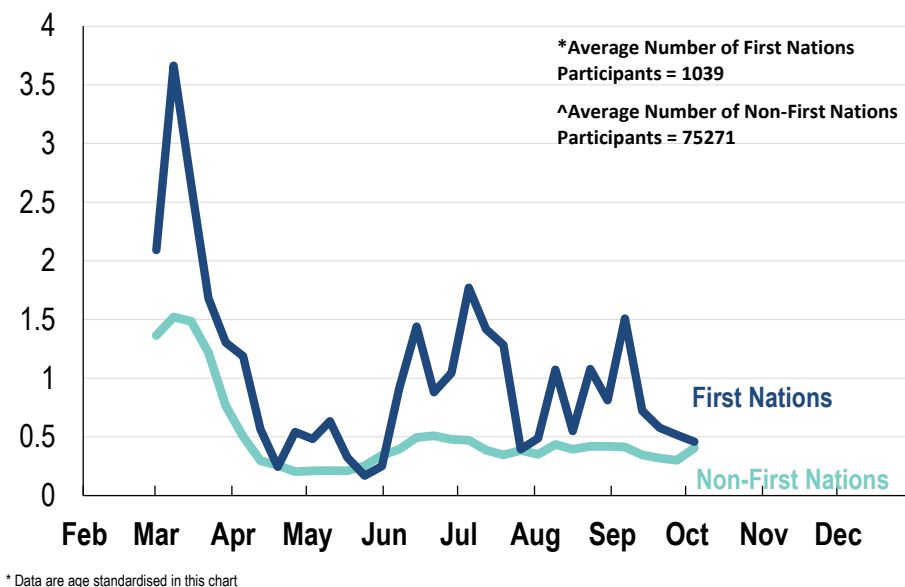
**This week influenza-like illness activity is low**  
**64,026 participants this week**

### Influenza-like illness activity:

*Fever and cough: 0.4% this week (flu-like illness activity is historically low)*



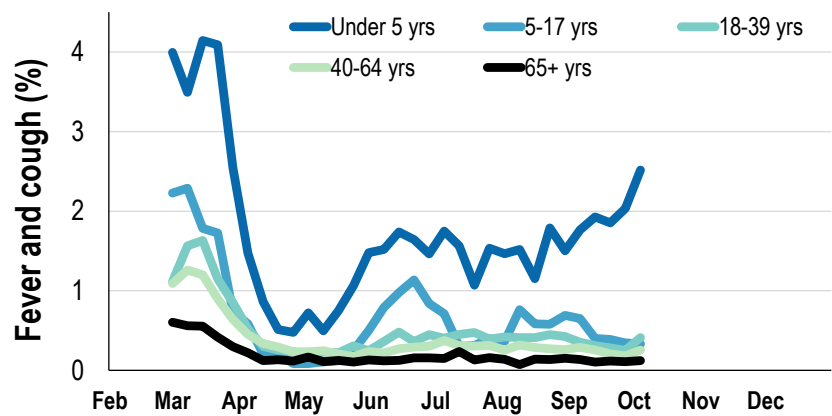
### Influenza-like illness activity by Aboriginal and Torres Strait Islander status:



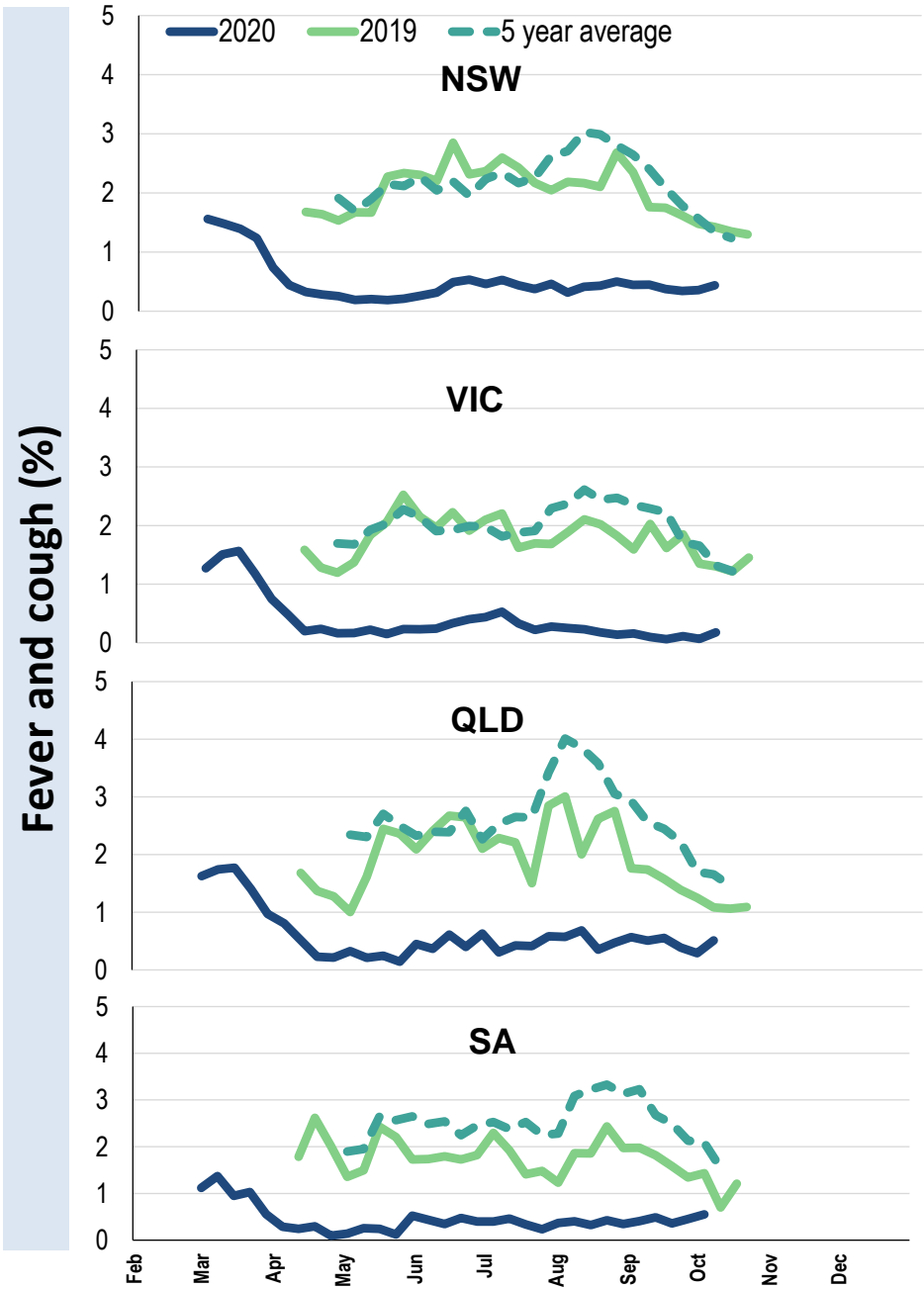
<b>Influenza-like illness severity:</b> <i>54.2% of participants with fever and cough sought medical advice this week</i>		
<b>Influenza-like illness Severity</b>	<b>Week ending 04 October 2020 number (%)</b>	<b>Week ending 27 September 2020 number (%)</b>
<b>Number of participants</b>	64026 (100%)	63931 (100%)
Fever & cough	192 (0.3%)	142 (0.2%)
Fever, cough & time-off normal duties	115 (0.2%)	89 (0.1%)
Fever, cough & 3 or more days off work/normal duties	67 (0.1%)	49 (0.1%)
<b>Number of participants with fever and cough</b>	192 (100%)	142 (100%)
*Sought medical advice for fever and cough	104 (54.2%)	77 (54.2%)
Admitted to hospital	3 (1.6%)	4 (2.8%)
Tested for influenza	24 (12.5%)	24 (16.9%)
Tested, result positive for influenza	0 (0%)	1 (0.7%)
Tested for coronavirus (COVID-19)	82 (42.7%)	69 (48.6%)
Tested, result positive for coronavirus (COVID-19)	0 (0%)	0 (0%)

\*Includes those who sought medical advice from a general practitioner, COVID-19 clinic, emergency department, or were admitted to hospital for fever & cough

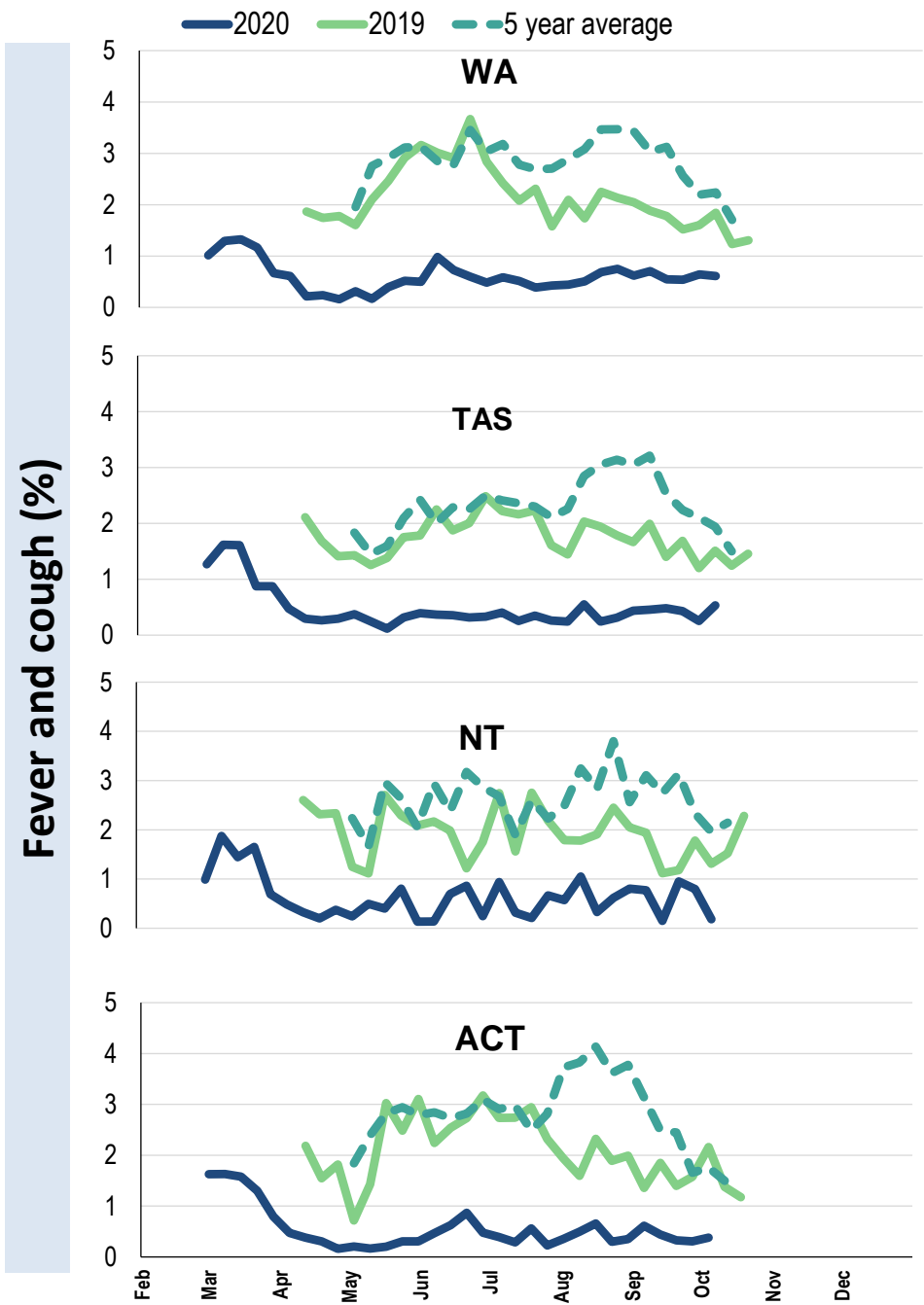
Influenza-like illness activity by age group (Australia):



Influenza-like illness activity by state/territory (age standardised):



Influenza-like illness activity by state/territory (age standardised):



Participation:

64,026 participants (63,931 last week)

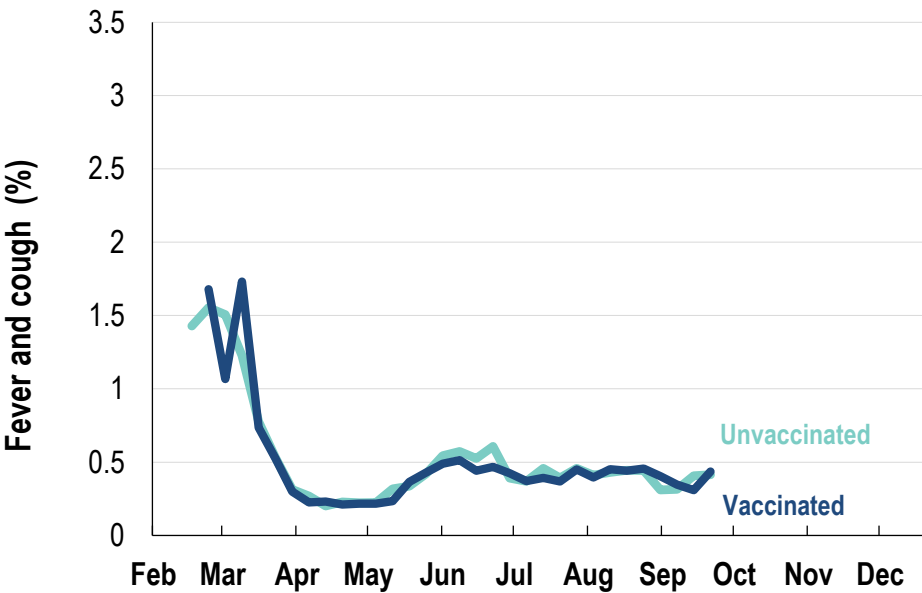
State	Participants	% Rate/100,000 population
NSW	21817	34.1% 276.3
VIC	13648	21.3% 214.6
QLD	8158	12.7% 164.9
SA	5427	8.5% 314.3
WA	6530	10.2% 252.4
TAS	4047	6.3% 775.3
NT	1010	1.6% 410.4
ACT	3389	5.3% 821.4
AUS	64026	100.0% 259.2

Vaccination rates:

Vaccination rates: 83.5% overall

Vaccinated participants:	%
<5 years	80.4
5-17 years	63.2
18-64 years	81.8
65+ years	94.0
Working with patients	93.6

Influenza-like illness activity by vaccination status:



\* Data are age standardised in this chart



FluTracking  
Tracking COVID-19