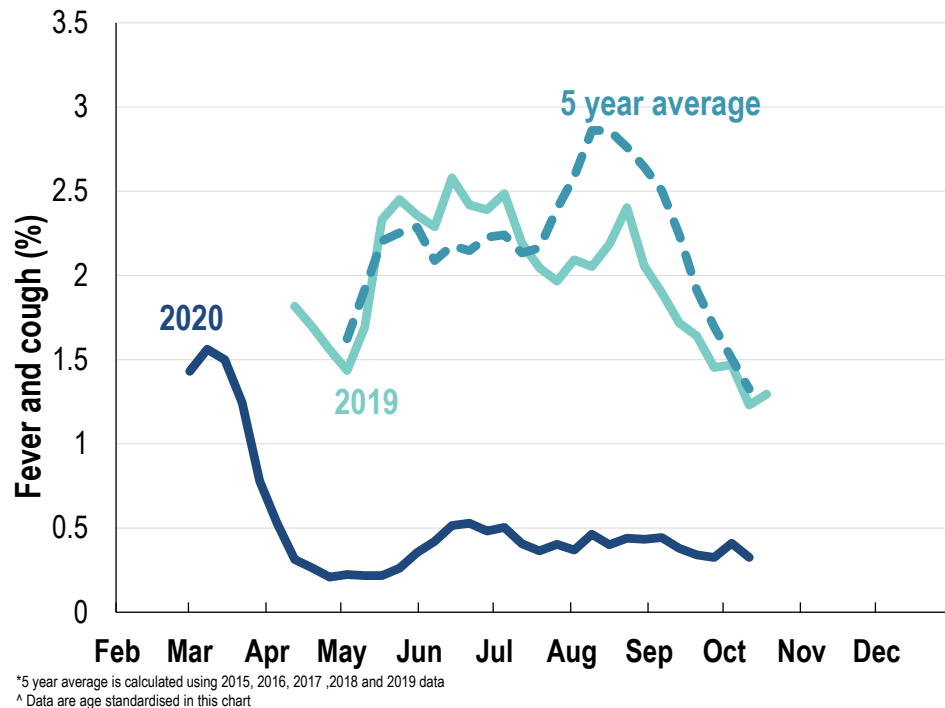




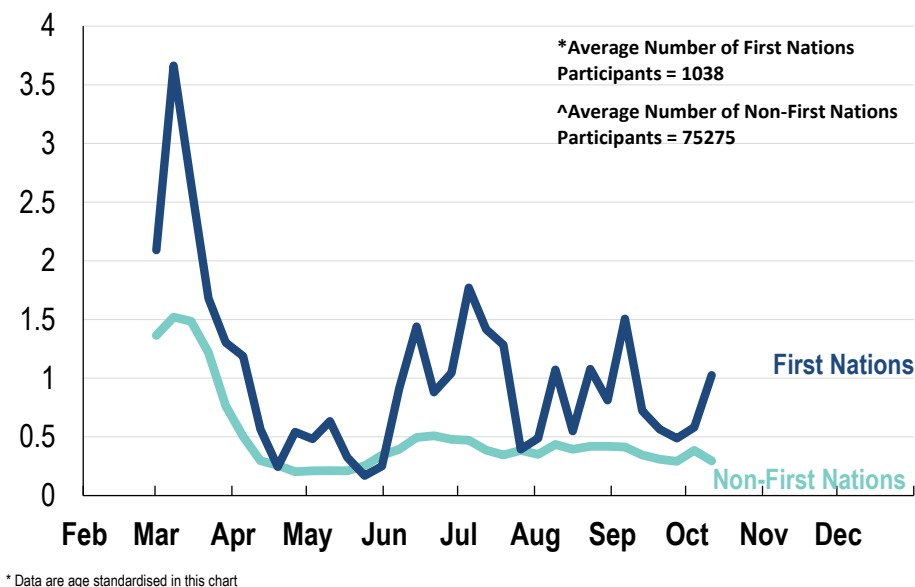
This week influenza-like illness activity is low 66,109 participants this week

Influenza-like illness activity:

Fever and cough: 0.3% this week (flu-like illness activity is historically low)



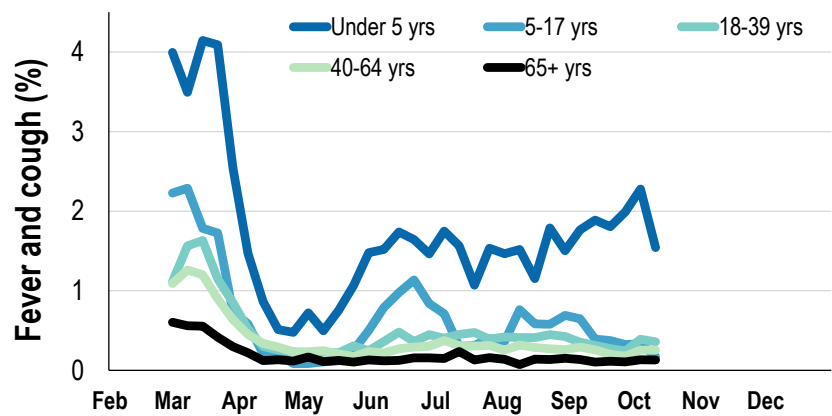
Influenza-like illness activity by Aboriginal and Torres Strait Islander status:



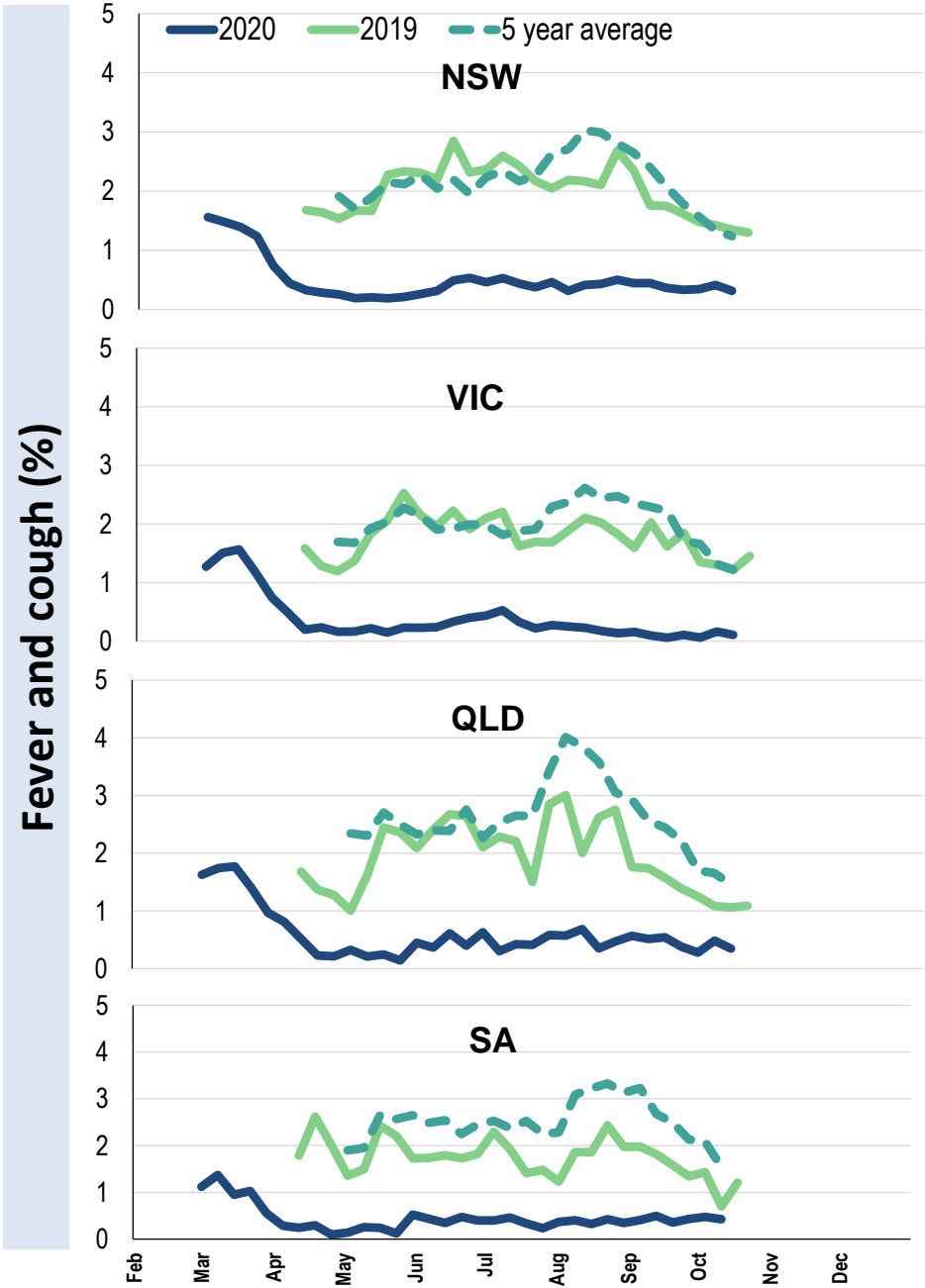
Influenza-like illness severity: <i>57.1% of participants with fever and cough sought medical advice this week</i>		
Influenza-like illness Severity	Week ending 11 October 2020 number (%)	Week ending 04 October 2020 number (%)
Number of participants	66109 (100%)	64026 (100%)
Fever & cough	170 (0.3%)	192 (0.3%)
Fever, cough & time-off normal duties	101 (0.2%)	120 (0.2%)
Fever, cough & 3 or more days off work/normal duties	60 (0.1%)	80 (0.1%)
Number of participants with fever and cough	170 (100%)	192 (100%)
*Sought medical advice for fever and cough	97 (57.1%)	109 (56.8%)
Admitted to hospital	2 (1.2%)	4 (2.1%)
Tested for influenza	22 (12.9%)	28 (14.6%)
Tested, result positive for influenza	0 (0%)	0 (0%)
Tested for coronavirus (COVID-19)	80 (47.1%)	97 (50.5%)
Tested, result positive for coronavirus (COVID-19)	0 (0%)	0 (0%)

*Includes those who sought medical advice from a general practitioner, COVID-19 clinic, emergency department, or were admitted to hospital for fever & cough

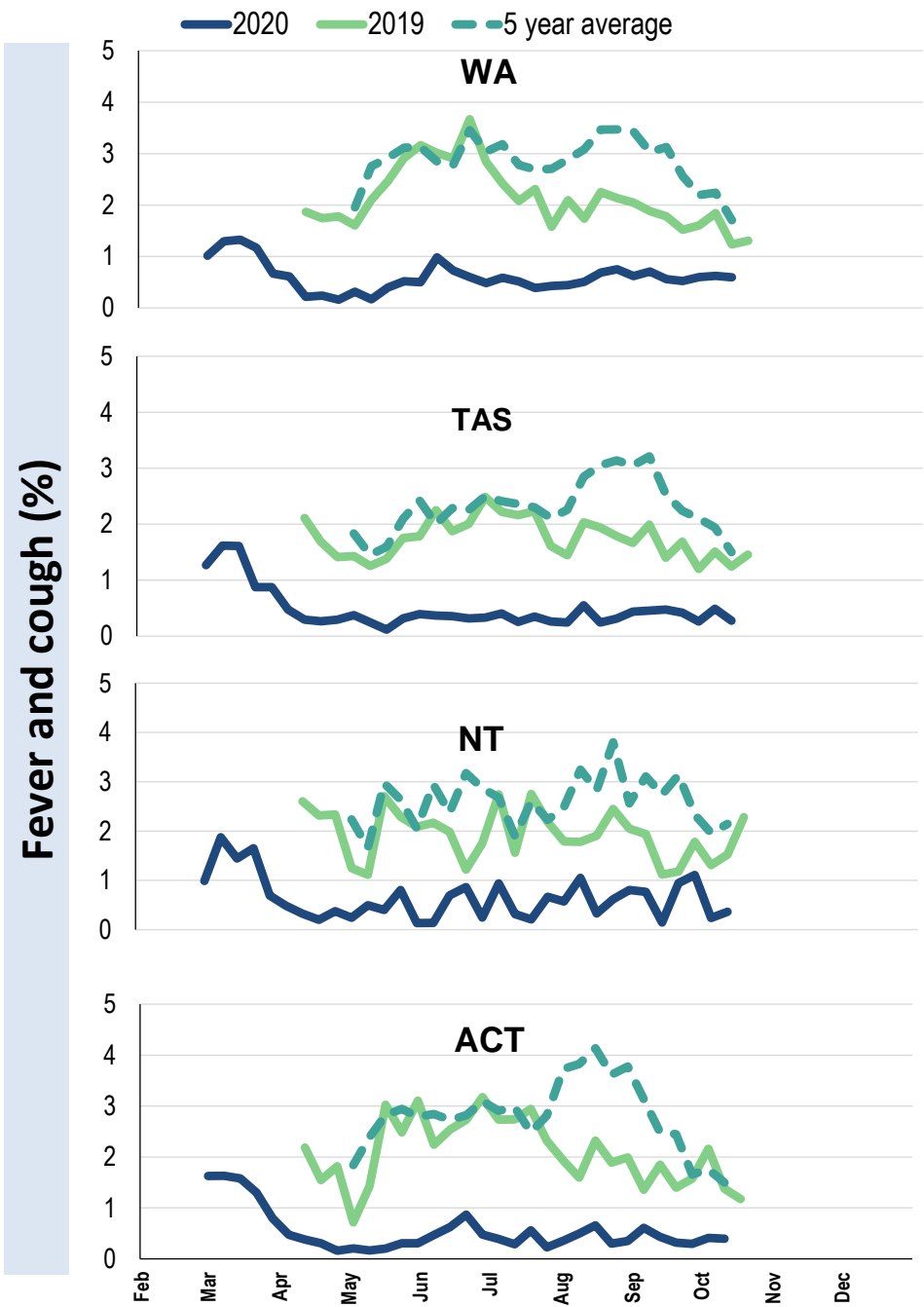
Influenza-like illness activity by age group (Australia):



Influenza-like illness activity by state/territory (age standardised):



Influenza-like illness activity by state/territory (age standardised):



Participation:

66,109 participants (64,026 last week)

State	Participants	% Rate/100,000 population
NSW	22975	34.8% 291.0
VIC	13532	20.5% 212.8
QLD	8284	12.5% 167.4
SA	5736	8.7% 332.2
WA	6772	10.2% 261.8
TAS	4199	6.4% 804.4
NT	1060	1.6% 430.7
ACT	3551	5.4% 860.6
AUS	66109	100.0% 267.6

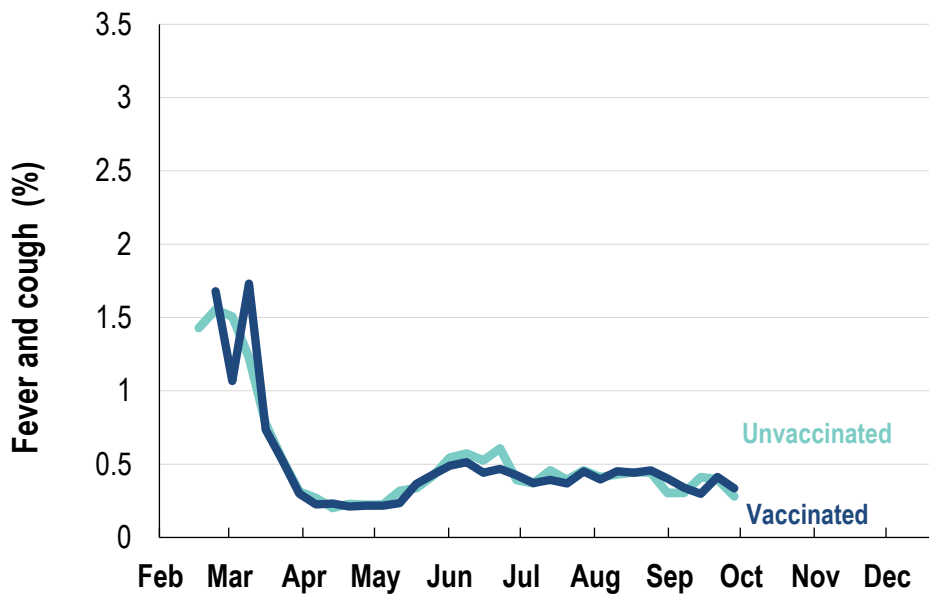
Vaccination rates:

Vaccination rates: 83.1% overall

Vaccinated participants:

	%
<5 years	79.6
5-17 years	62.3
18-64 years	81.7
65+ years	94.0
Working with patients	93.5

Influenza-like illness activity by vaccination status:



* Data are age standardised in this chart

