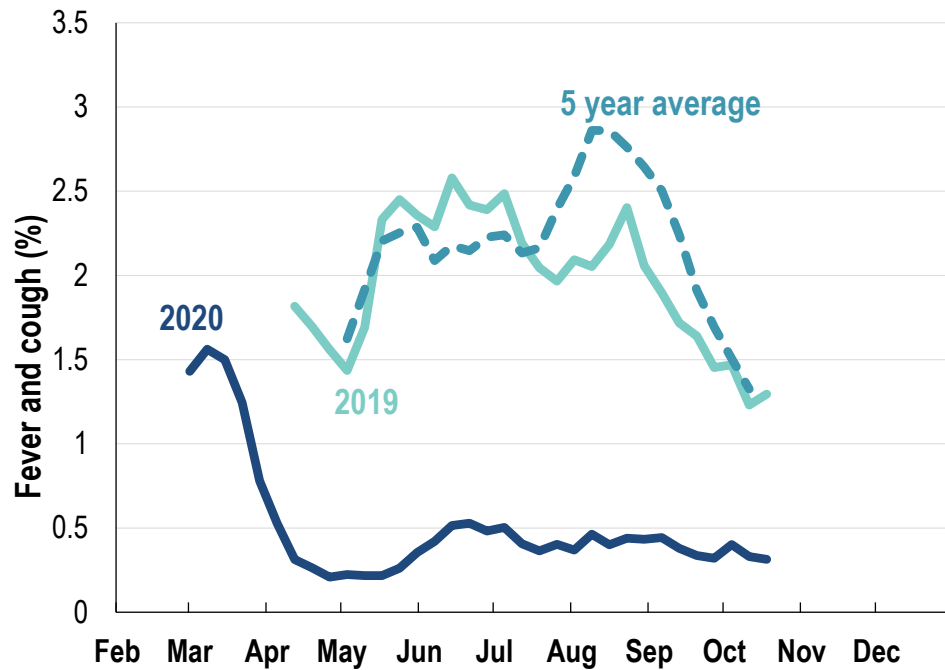




This week influenza-like illness activity is low 65,339 participants this week

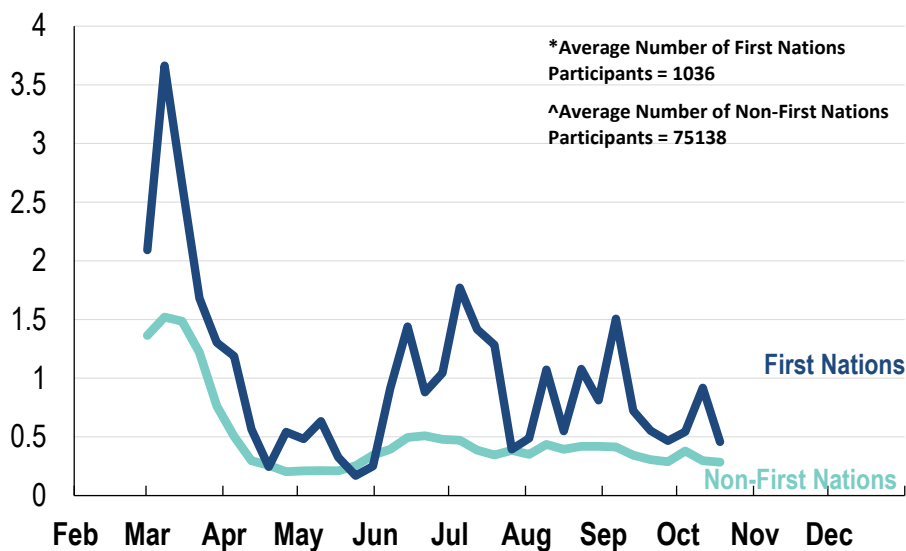
Influenza-like illness activity:

Fever and cough: 0.2% this week (flu-like illness activity is historically low)



*5 year average is calculated using 2015, 2016, 2017, 2018 and 2019 data
^ Data are age standardised in this chart

Influenza-like illness activity by Aboriginal and Torres Strait Islander status:

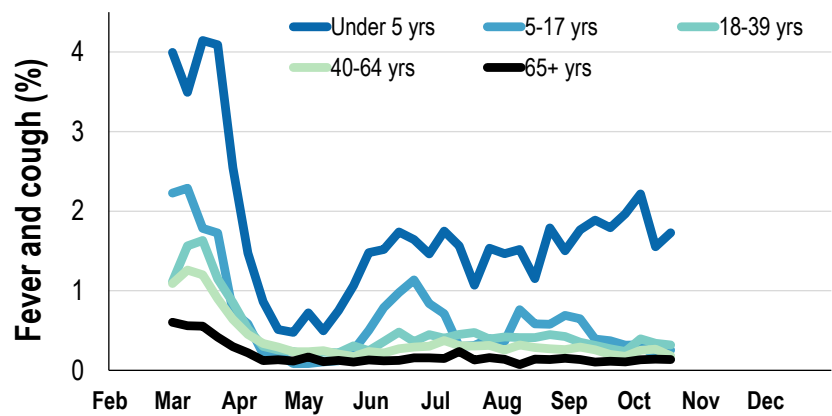


* Data are age standardised in this chart

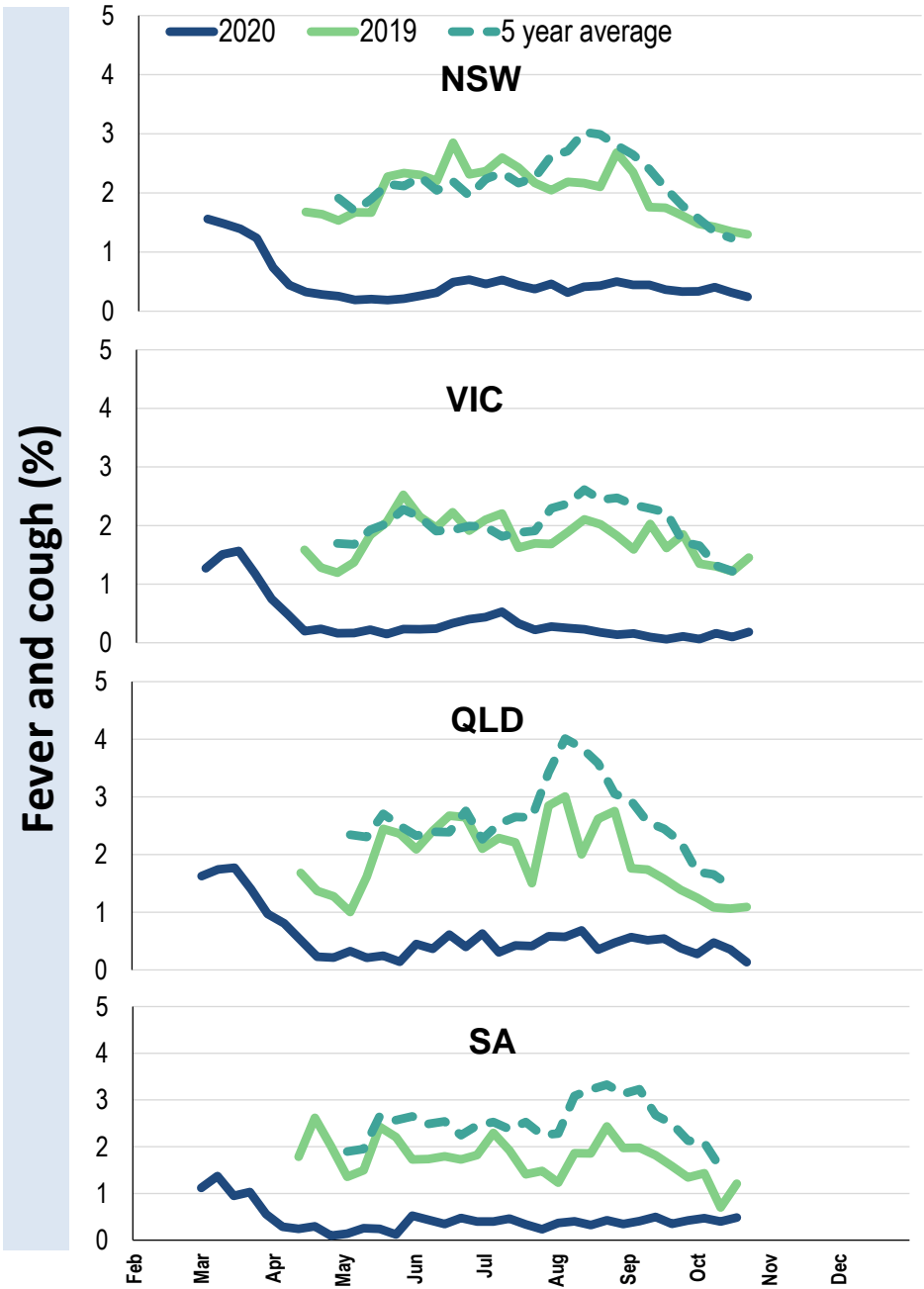
Influenza-like illness severity: <i>57% of participants with fever and cough sought medical advice this week</i>		
Influenza-like illness Severity	Week ending 18 October 2020 number (%)	Week ending 11 October 2020 number (%)
Number of participants	65339 (100%)	66109 (100%)
Fever & cough	151 (0.2%)	170 (0.3%)
Fever, cough & time-off normal duties	103 (0.2%)	107 (0.2%)
Fever, cough & 3 or more days off work/normal duties	66 (0.1%)	70 (0.1%)
Number of participants with fever and cough	151 (100%)	170 (100%)
*Sought medical advice for fever and cough	86 (57%)	101 (59.4%)
Admitted to hospital	3 (2%)	2 (1.2%)
Tested for influenza	17 (11.3%)	24 (14.1%)
Tested, result positive for influenza	1 (0.7%)	0 (0%)
Tested for coronavirus (COVID-19)	65 (43%)	86 (50.6%)
Tested, result positive for coronavirus (COVID-19)	0 (0%)	0 (0%)

*Includes those who sought medical advice from a general practitioner, COVID-19 clinic, emergency department, or were admitted to hospital for fever & cough

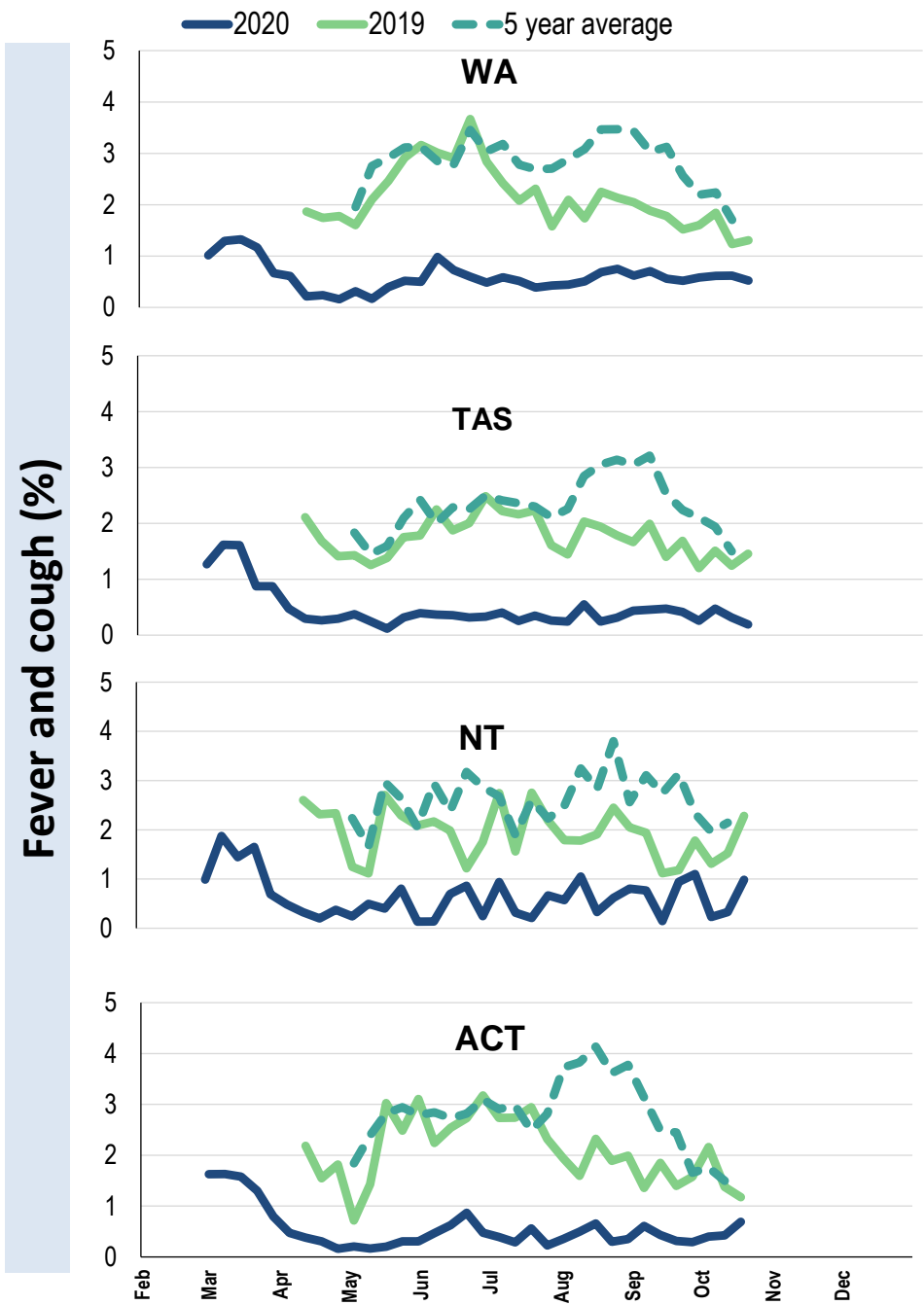
Influenza-like illness activity by age group (Australia):



Influenza-like illness activity by state/territory (age standardised):



Influenza-like illness activity by state/territory (age standardised):



Participation:

65,339 participants (66,109 last week)

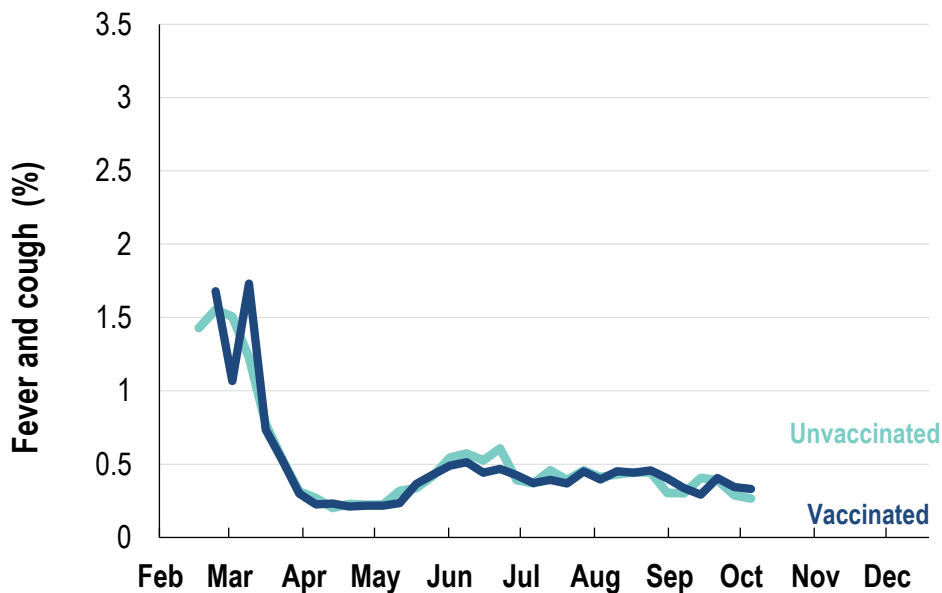
State	Participants	%	Rate/100,000 population
NSW	22585	34.6%	286.0
VIC	13441	20.6%	211.4
QLD	8214	12.6%	166.0
SA	5705	8.7%	330.4
WA	6681	10.2%	258.2
TAS	4092	6.3%	783.9
NT	1075	1.6%	436.8
ACT	3546	5.4%	859.4
AUS	65339	100.0%	264.5

Vaccination rates:

Vaccination rates: 83.4% overall

Vaccinated participants:	%
<5 years	79.0
5-17 years	63.1
18-64 years	82.0
65+ years	94.1
Working with patients	93.8

Influenza-like illness activity by vaccination status:



* Data are age standardised in this chart



FluTracking
Tracking COVID-19