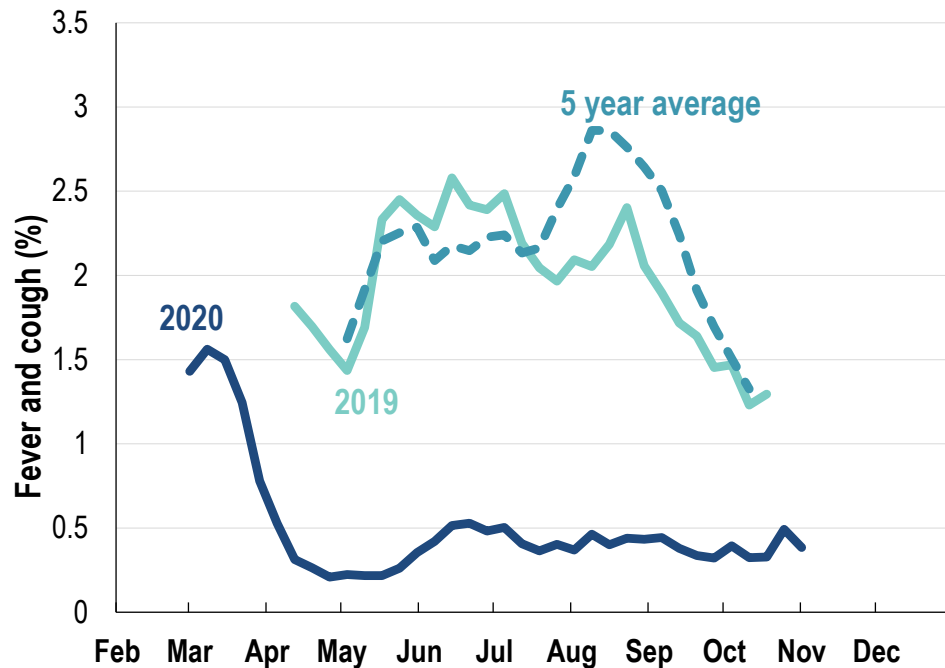




This week influenza-like illness activity is low 44,721 participants this week

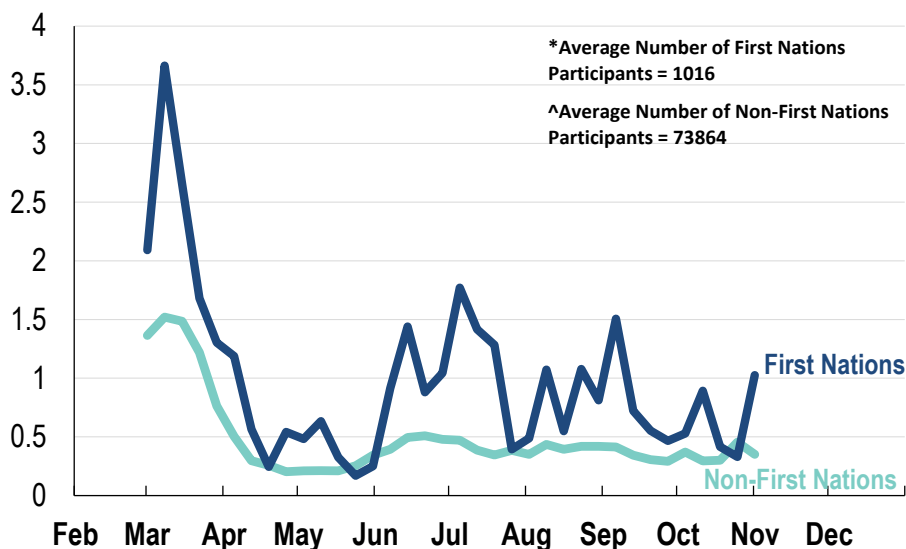
Influenza-like illness activity:

Fever and cough: 0.4% this week (flu-like illness activity is historically low)



*5 year average is calculated using 2015, 2016, 2017, 2018 and 2019 data
^ Data are age standardised in this chart

Influenza-like illness activity by Aboriginal and Torres Strait Islander status:



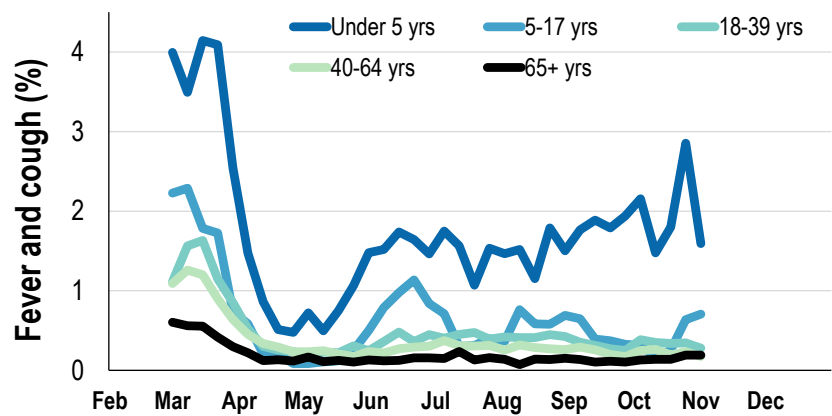
* Data are age standardised in this chart

Influenza-like illness severity:
63.9% of participants with fever and cough sought medical advice this week

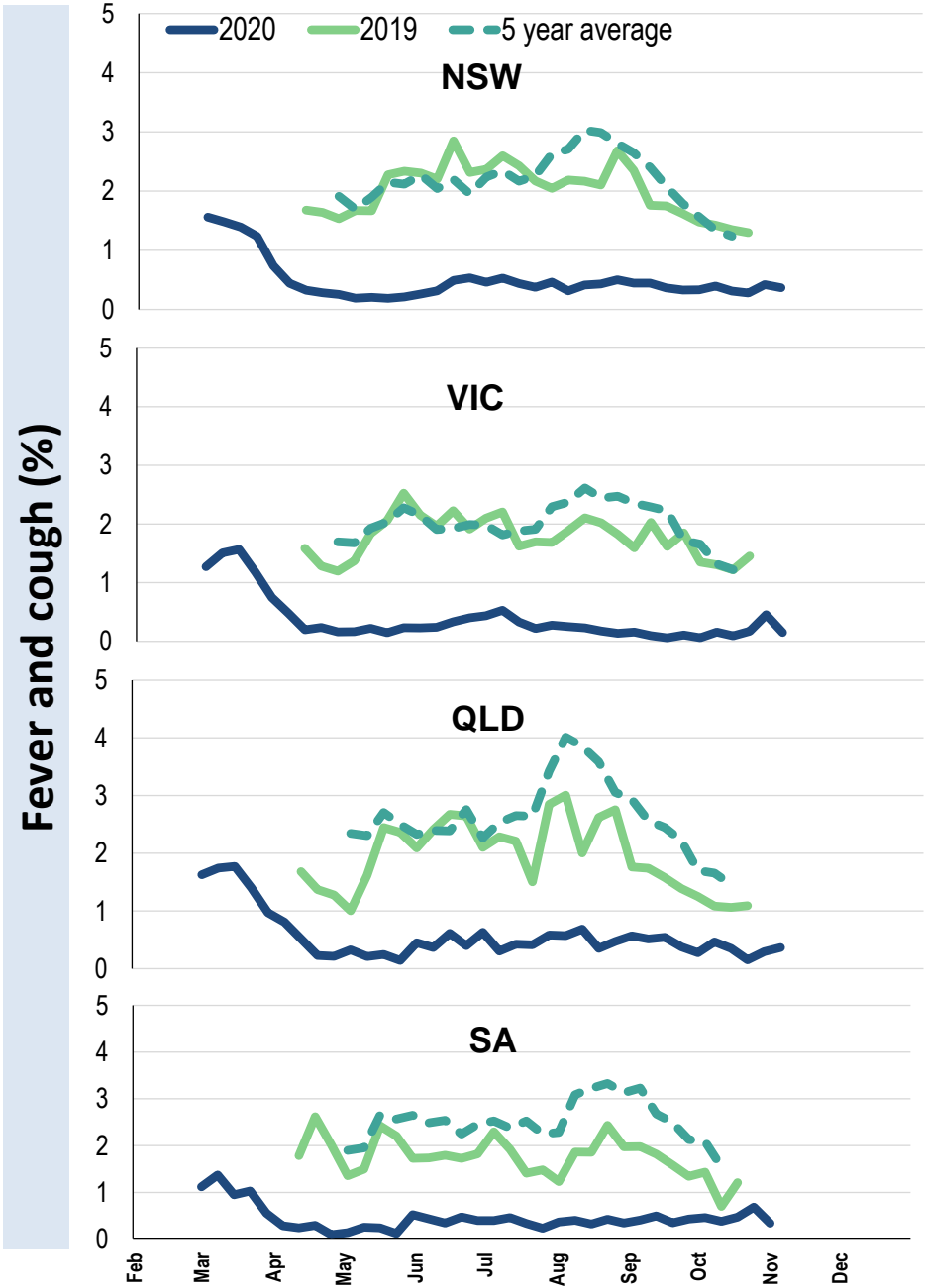
| Influenza-like illness Severity | Week ending 01 November 2020 number (%) | Week ending 25 October 2020 number (%) |
|--|---|--|
| Number of participants | 44721 (100%) | 49233 (100%) |
| Fever & cough | 122 (0.3%) | 162 (0.3%) |
| Fever, cough & time-off normal duties | 87 (0.2%) | 110 (0.2%) |
| Fever, cough & 3 or more days off work/normal duties | 49 (0.1%) | 65 (0.1%) |
| Number of participants with fever and cough | 122 (100%) | 162 (100%) |
| *Sought medical advice for fever and cough | 78 (63.9%) | 87 (53.7%) |
| Admitted to hospital | 4 (3.3%) | 2 (1.2%) |
| Tested for influenza | 19 (15.6%) | 23 (14.2%) |
| Tested, result positive for influenza | 0 (0%) | 0 (0%) |
| Tested for coronavirus (COVID-19) | 70 (57.4%) | 81 (50%) |
| Tested, result positive for coronavirus (COVID-19) | 0 (0%) | 0 (0%) |

*Includes those who sought medical advice from a general practitioner, COVID-19 clinic, emergency department, or were admitted to hospital for fever & cough

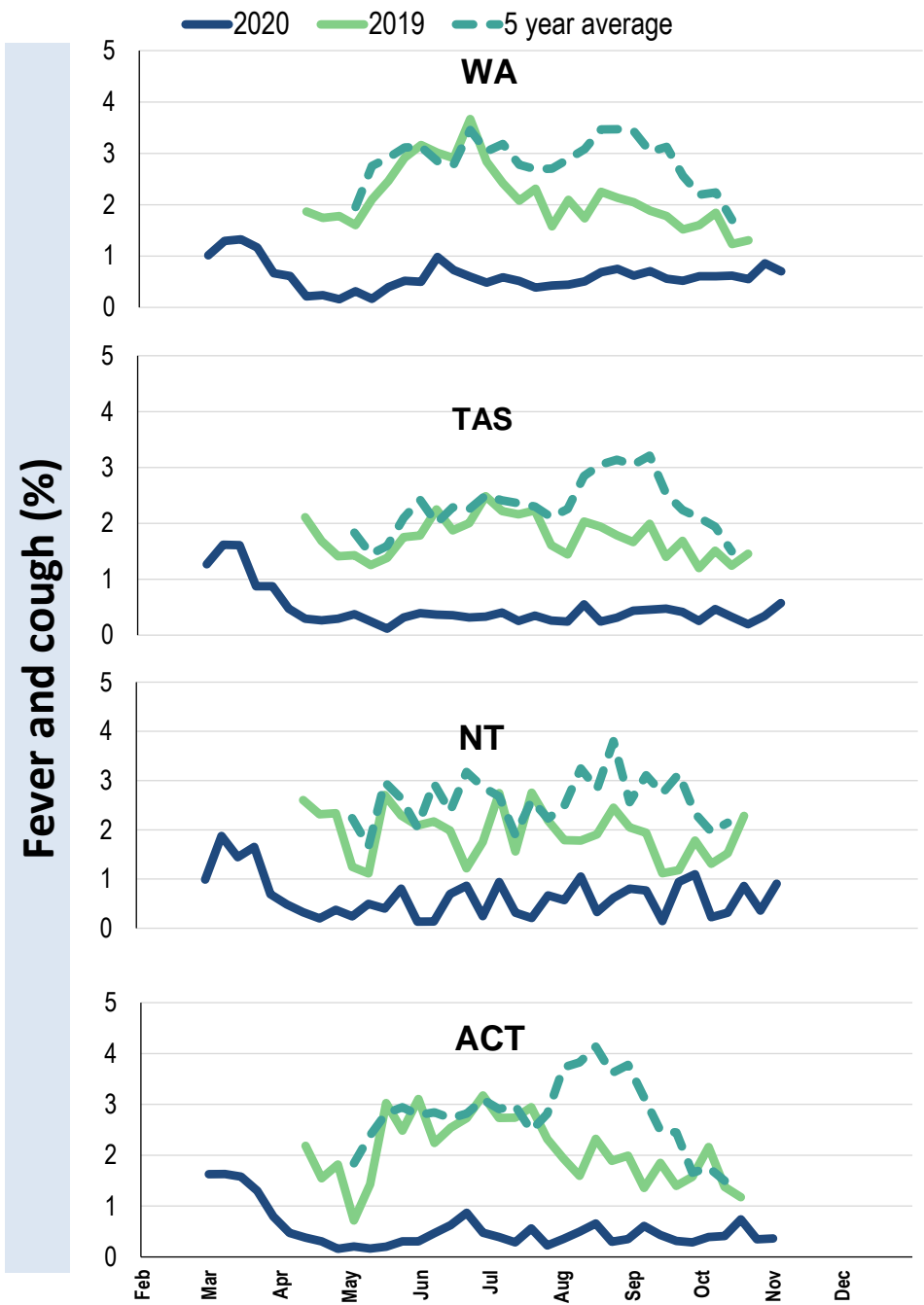
Influenza-like illness activity by age group (Australia):



Influenza-like illness activity by state/territory (age standardised):



Influenza-like illness activity by state/territory (age standardised):



Participation:

44,721 participants (49,233 last week)

| State | Participants | % Rate/100,000 population |
|-------|--------------|---------------------------|
| NSW | 15878 | 35.5% 201.1 |
| VIC | 8882 | 19.9% 139.7 |
| QLD | 5293 | 11.8% 107.0 |
| SA | 4008 | 9.0% 232.1 |
| WA | 4432 | 9.9% 171.3 |
| TAS | 3001 | 6.7% 574.9 |
| NT | 876 | 2.0% 356.0 |
| ACT | 2351 | 5.3% 569.8 |
| AUS | 44721 | 100.0% 181.0 |

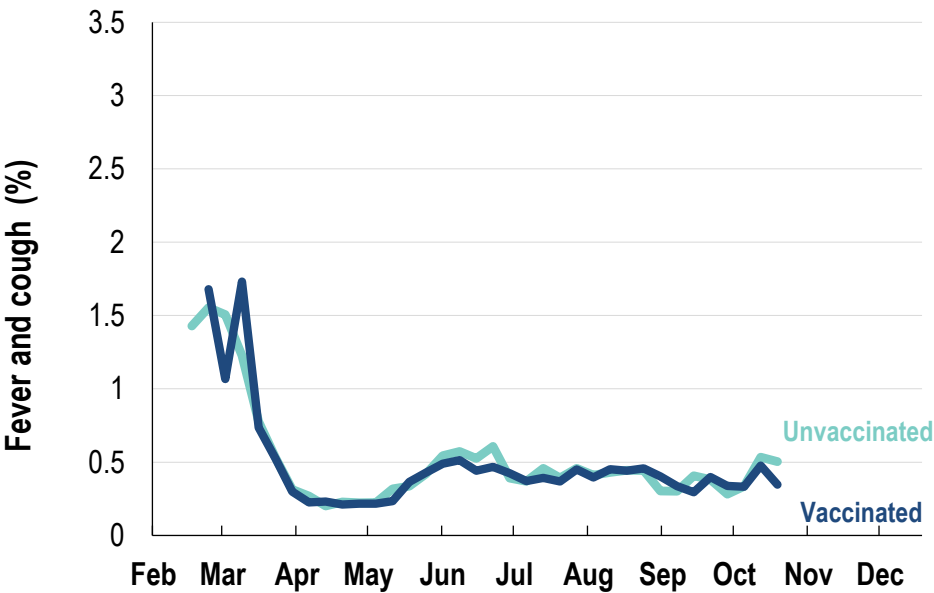
Vaccination rates:

Vaccination rates: 83.5% overall

Vaccinated participants:

| | % |
|-----------------------|------|
| <5 years | 78.3 |
| 5-17 years | 63.3 |
| 18-64 years | 82.2 |
| 65+ years | 93.8 |
| Working with patients | 93.8 |

Influenza-like illness activity by vaccination status:



* Data are age standardised in this chart



FluTracking
Tracking COVID-19