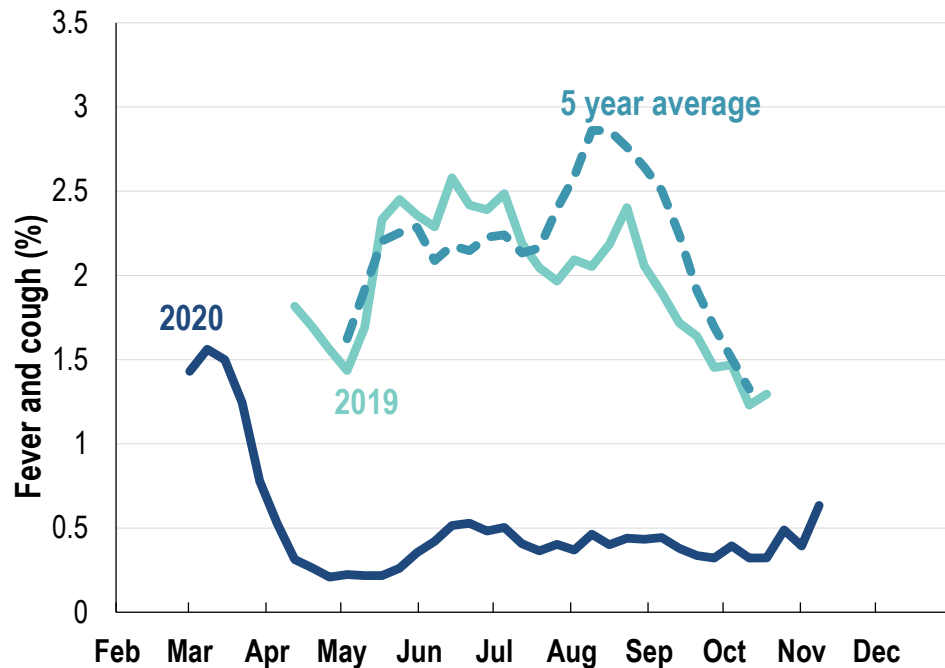




This week influenza-like illness activity is low 42,919 participants this week

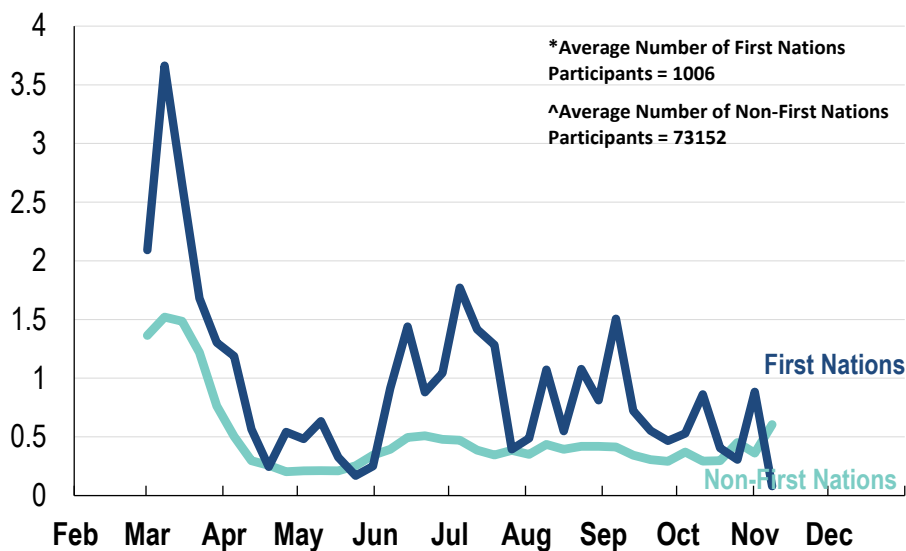
Influenza-like illness activity:

Fever and cough: 0.6% this week (flu-like illness activity is historically low)



*5 year average is calculated using 2015, 2016, 2017, 2018 and 2019 data
^ Data are age standardised in this chart

Influenza-like illness activity by Aboriginal and Torres Strait Islander status:



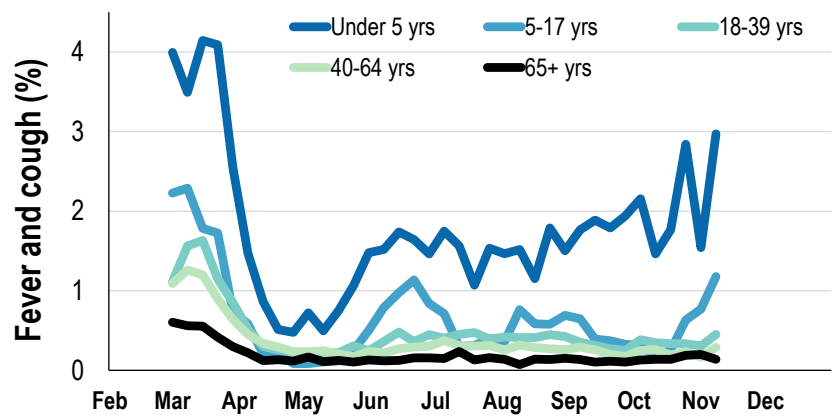
* Data are age standardised in this chart

Influenza-like illness severity:
45.7% of participants with fever and cough sought medical advice this week

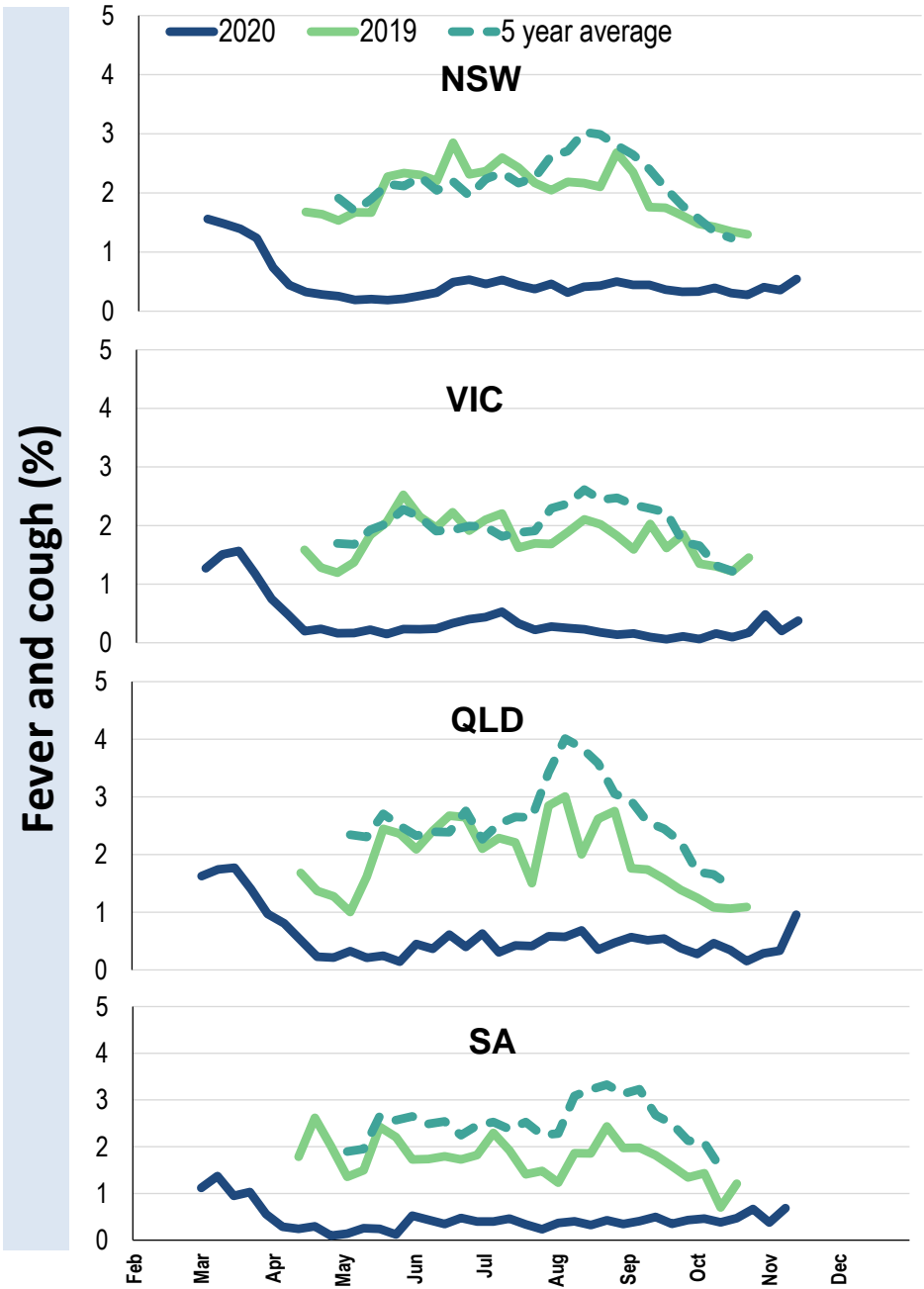
Influenza-like illness Severity	Week ending 08 November 2020 number (%)	Week ending 01 November 2020 number (%)
Number of participants	42919 (100%)	44721 (100%)
Fever & cough	175 (0.4%)	122 (0.3%)
Fever, cough & time-off normal duties	127 (0.3%)	89 (0.2%)
Fever, cough & 3 or more days off work/normal duties	66 (0.2%)	54 (0.1%)
Number of participants with fever and cough	175 (100%)	122 (100%)
*Sought medical advice for fever and cough	80 (45.7%)	82 (67.2%)
Admitted to hospital	1 (0.6%)	5 (4.1%)
Tested for influenza	21 (12%)	20 (16.4%)
Tested, result positive for influenza	1 (0.6%)	0 (0%)
Tested for coronavirus (COVID-19)	72 (41.1%)	73 (59.8%)
Tested, result positive for coronavirus (COVID-19)	1 (0.6%)	0 (0%)

*Includes those who sought medical advice from a general practitioner, COVID-19 clinic, emergency department, or were admitted to hospital for fever & cough

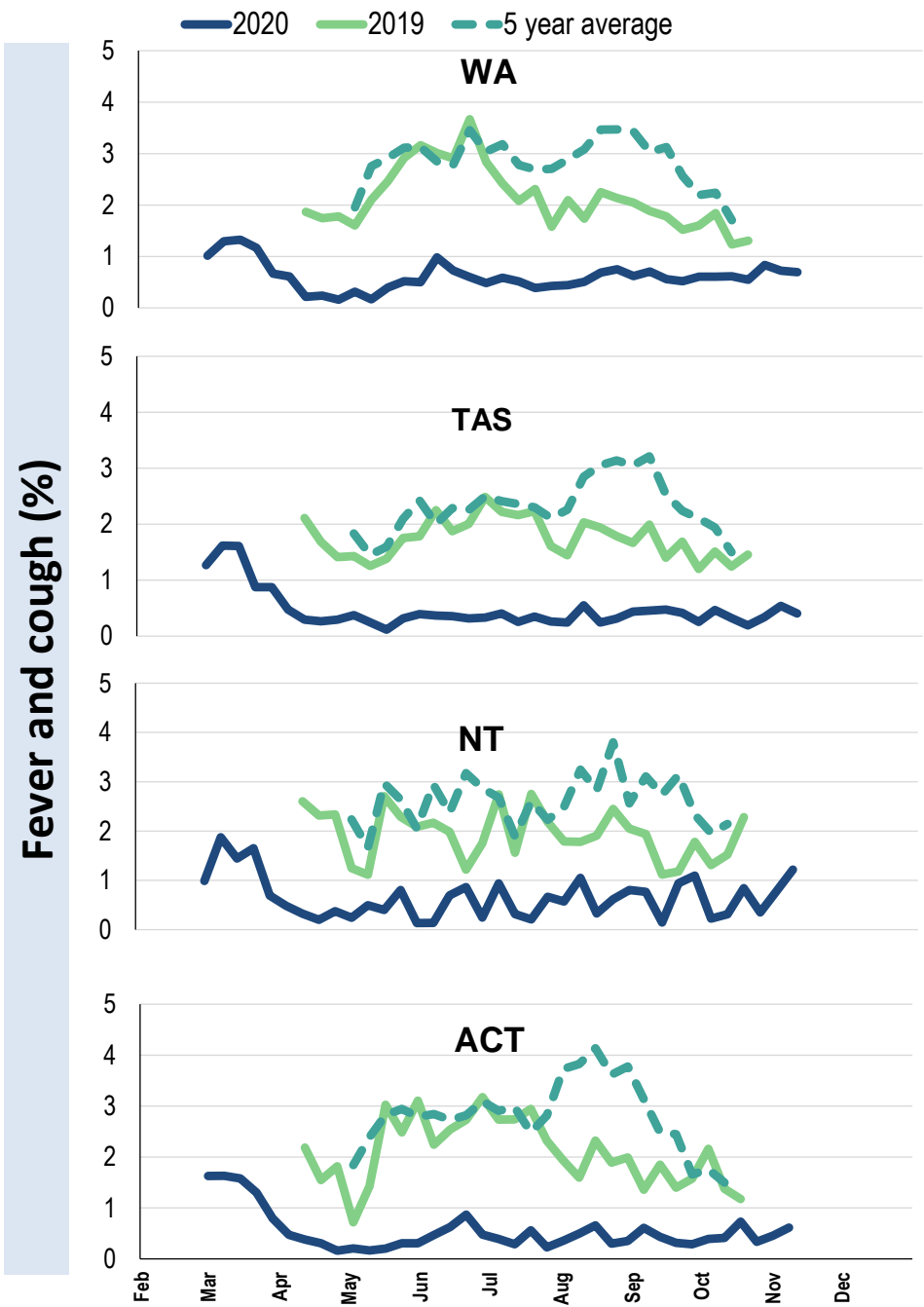
Influenza-like illness activity by age group (Australia):



Influenza-like illness activity by state/territory (age standardised):



Influenza-like illness activity by state/territory (age standardised):



Participation:

42,919 participants (44,721 last week)

State	Participants	%	Rate/100,000 population
NSW	15216	35.5%	192.7
VIC	8592	20.0%	135.1
QLD	5102	11.9%	103.1
SA	3855	9.0%	223.2
WA	4196	9.8%	162.2
TAS	2885	6.7%	552.7
NT	847	2.0%	344.2
ACT	2226	5.2%	539.5
AUS	42919	100.0%	173.7

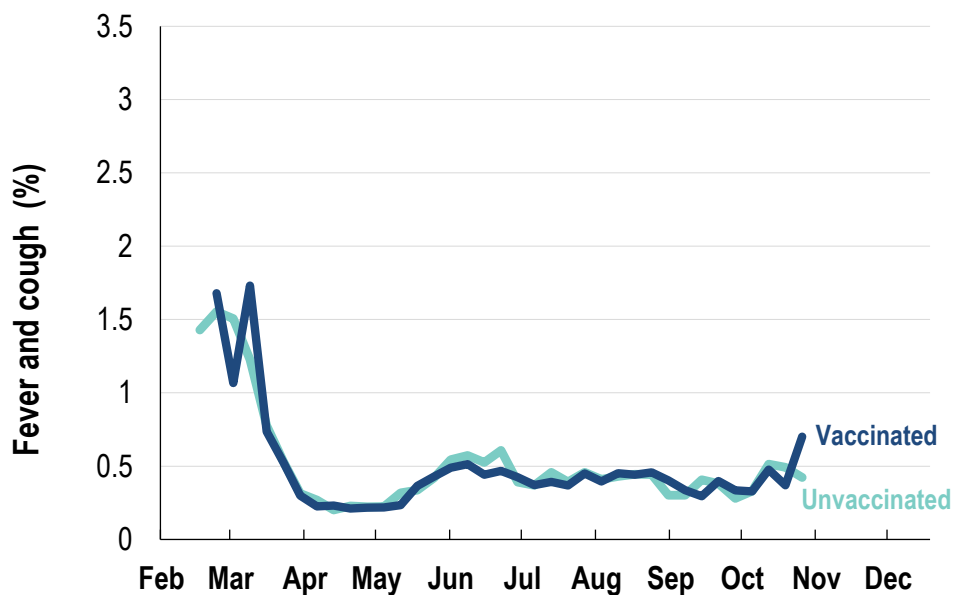
Vaccination rates:

Vaccination rates: 83.6% overall

Vaccinated participants:

	%
<5 years	78.9
5-17 years	63.0
18-64 years	82.3
65+ years	93.8
Working with patients	93.9

Influenza-like illness activity by vaccination status:



* Data are age standardised in this chart



FluTracking
Tracking COVID-19