



Week ending 8 November 2020

## Low levels of Influenza-like illness (ILI) activity

(FluTracking is an online **self-reporting** ILI surveillance system. Care should be taken when interpreting this report)

The data presented here should not be treated as authoritative and should always be interpreted together with other trusted sources from the [New Zealand Influenza Intelligence Report](#)

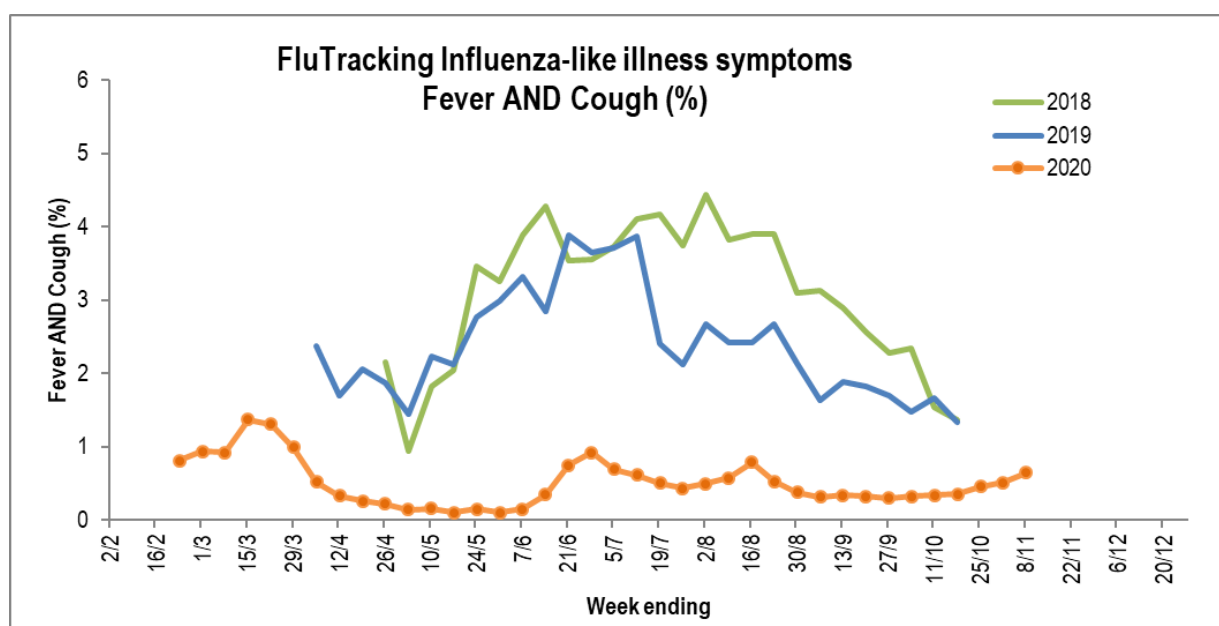
This survey was sent on Monday, 09 November 2020 at 03:11 AM and by 09:00 AM, Thursday 12 November we had received 25849 responses (27862 last week) from 14082 people responding for themselves and 11767 household members across New Zealand.

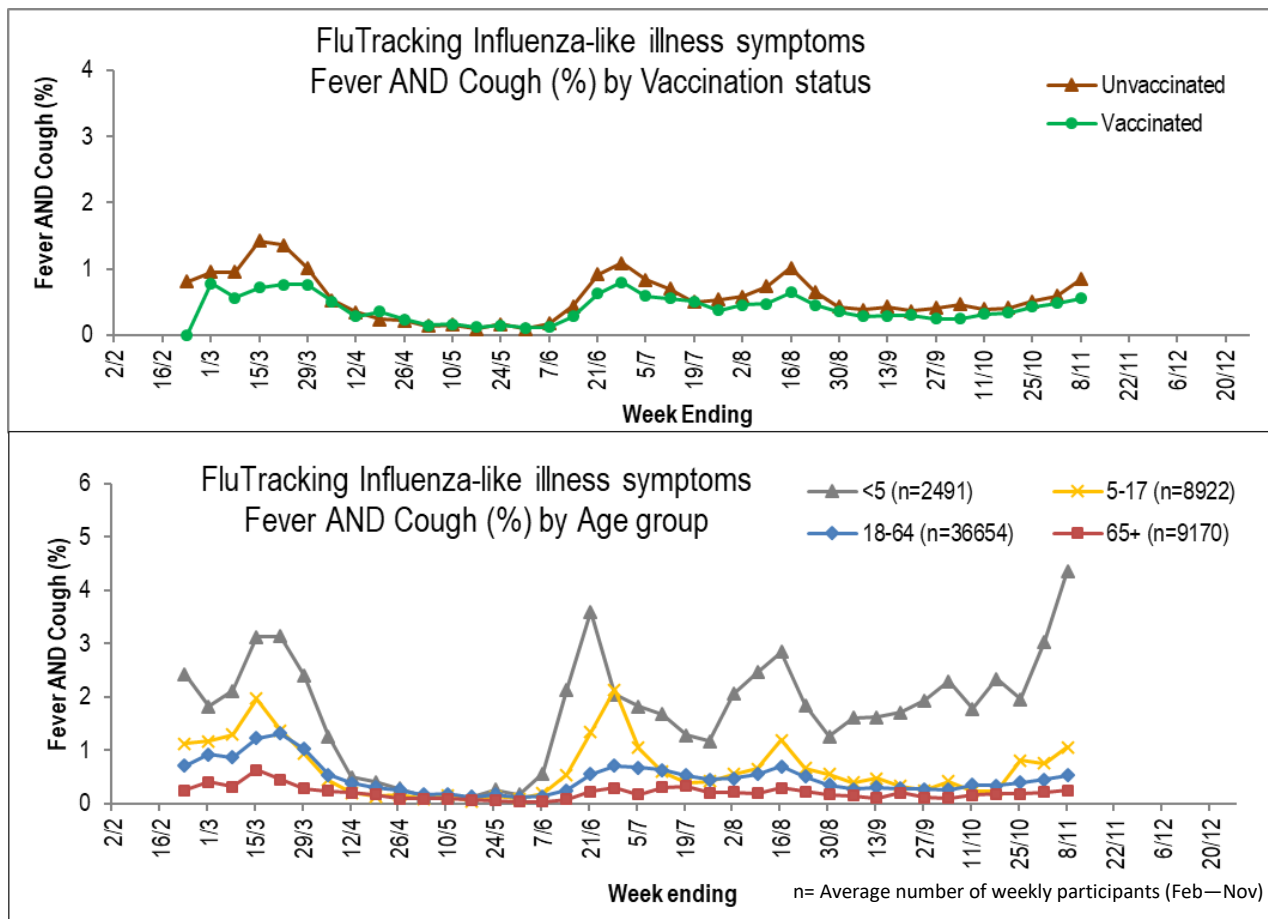
Across New Zealand, fever and cough was reported by 0.6% participants. Fever, cough and absence from normal duties was reported by 0.5% participants. Fever and cough was reported by 4.4% of participants aged less than 5 years, 1.1% of participants aged 5-17 years, 0.5% of participants aged 18-64 years, and 0.2% of participants aged 65 years or older.

Number of respondents*					
Region	Week ending				
	11 – Oct	18 – Oct	25 – Oct	1 – Nov	8 – Nov
North Island	34224 (74.5%)	33984 (74.7%)	23528 (75.3%)	20881 (75.3%)	19334 (74.8%)
South Island	11696 (25.5%)	11512 (25.3%)	7722 (24.7%)	6836 (24.7%)	6515 (25.2%)
New Zealand	45920 (100%)	45496 (100%)	31250 (100%)	27717 (100%)	25849 (100%)

\*Surveys sent on Mondays at 3:00 am and response data updated on Thursdays at 9:00 am.

To join the survey or find out more information: [www.flutracking.net](http://www.flutracking.net) - Contact FluTracking team: [nzmoh\\_flutracking@health.govt.nz](mailto:nzmoh_flutracking@health.govt.nz)





To join the survey or find out more information: [www.flutracking.net](http://www.flutracking.net) – Contact FluTracking team: [nzmoh\\_flutracking@health.govt.nz](mailto:nzmoh_flutracking@health.govt.nz)

