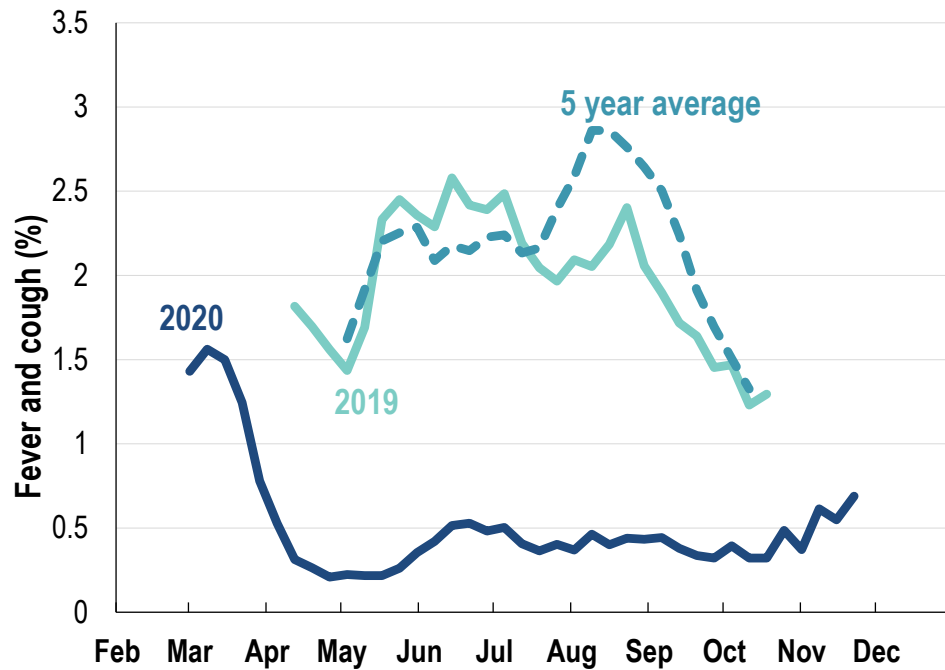




This week influenza-like illness activity is low 41,137 participants this week

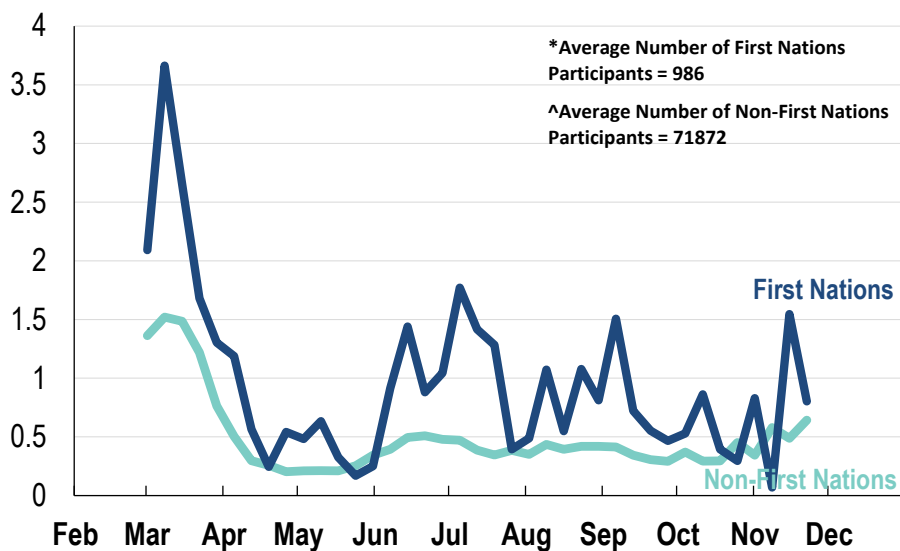
Influenza-like illness activity:

Fever and cough: 0.7% this week (flu-like illness activity is historically low)



*5 year average is calculated using 2015, 2016, 2017, 2018 and 2019 data
^ Data are age standardised in this chart

Influenza-like illness activity by Aboriginal and Torres Strait Islander status:



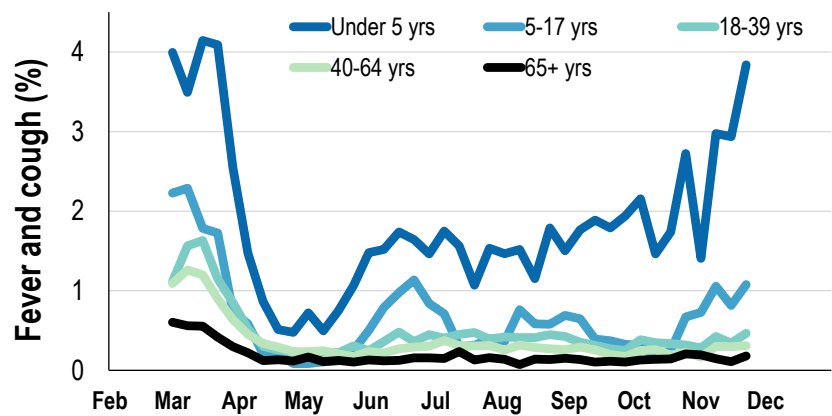
* Data are age standardised in this chart

Influenza-like illness severity:
58.3% of participants with fever and cough sought medical advice this week

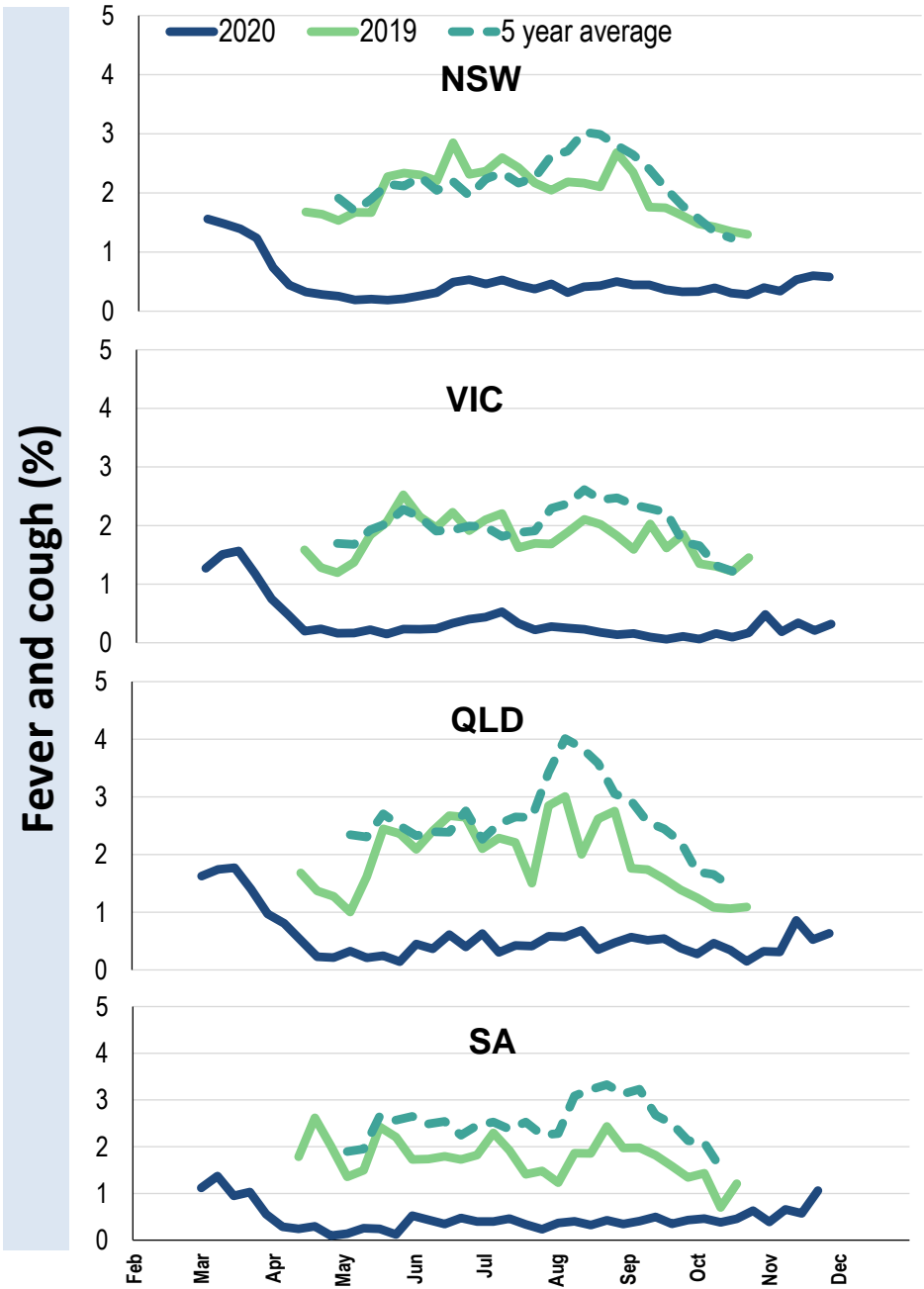
Influenza-like illness Severity	Week ending 22 November 2020 number (%)	Week ending 15 November 2020 number (%)
Number of participants	41137 (100%)	42827 (100%)
Fever & cough	180 (0.4%)	160 (0.4%)
Fever, cough & time-off normal duties	140 (0.3%)	114 (0.3%)
Fever, cough & 3 or more days off work/normal duties	85 (0.2%)	69 (0.2%)
Number of participants with fever and cough	180 (100%)	160 (100%)
*Sought medical advice for fever and cough	105 (58.3%)	95 (59.4%)
Admitted to hospital	6 (3.3%)	6 (3.8%)
Tested for influenza	33 (18.3%)	23 (14.4%)
Tested, result positive for influenza	0 (0%)	0 (0%)
Tested for coronavirus (COVID-19)	101 (56.1%)	85 (53.1%)
Tested, result positive for coronavirus (COVID-19)	0 (0%)	0 (0%)

*Includes those who sought medical advice from a general practitioner, COVID-19 clinic, emergency department, or were admitted to hospital for fever & cough

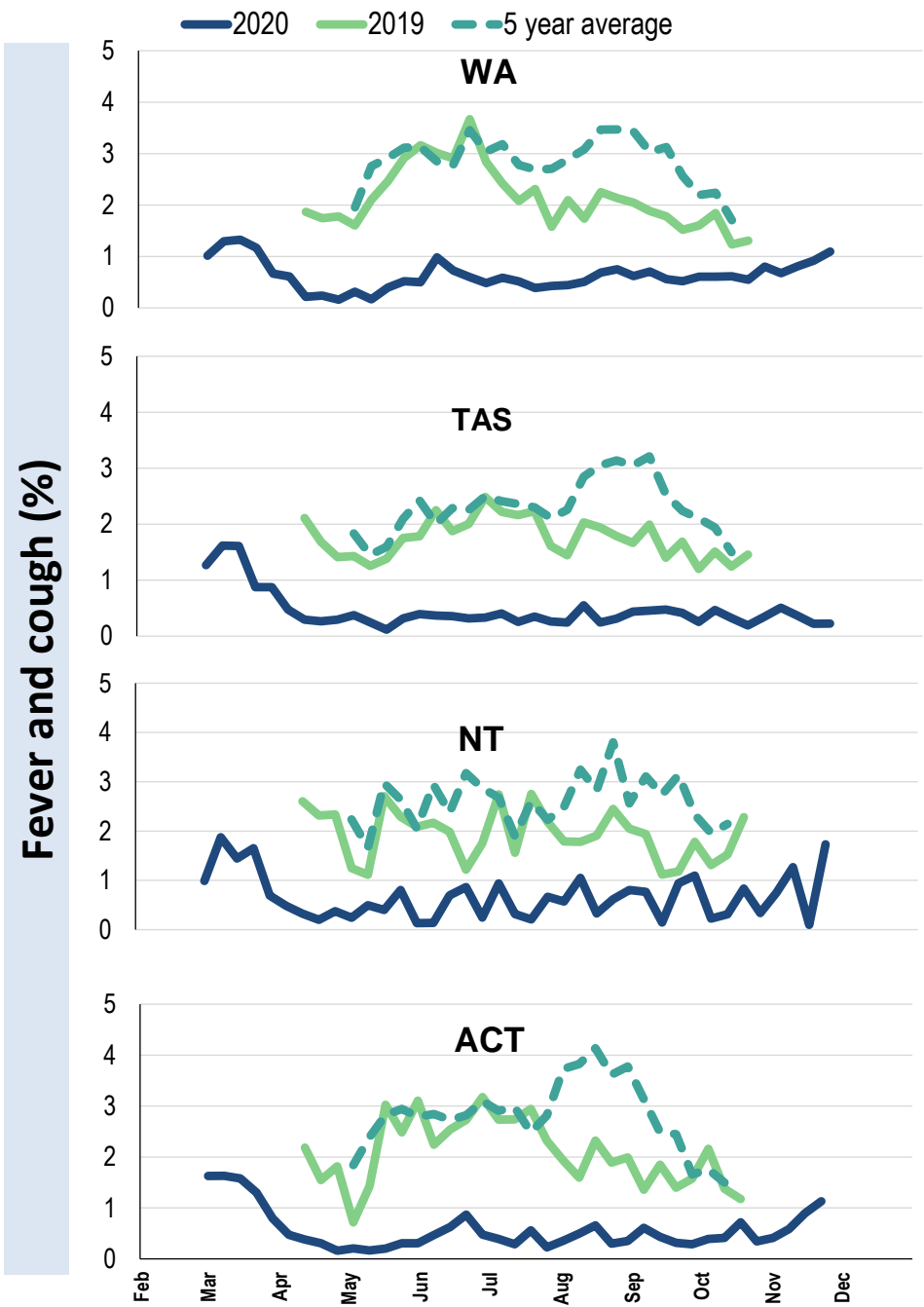
Influenza-like illness activity by age group (Australia):



Influenza-like illness activity by state/territory (age standardised):



Influenza-like illness activity by state/territory (age standardised):



Participation:

41,137 participants (42,827 last week)

State	Participants	%	Rate/100,000 population
NSW	14546	35.4%	184.2
VIC	8119	19.7%	127.7
QLD	4863	11.8%	98.3
SA	3757	9.1%	217.6
WA	4047	9.8%	156.4
TAS	2807	6.8%	537.7
NT	833	2.0%	338.5
ACT	2165	5.3%	524.7
AUS	41137	100.0%	166.5

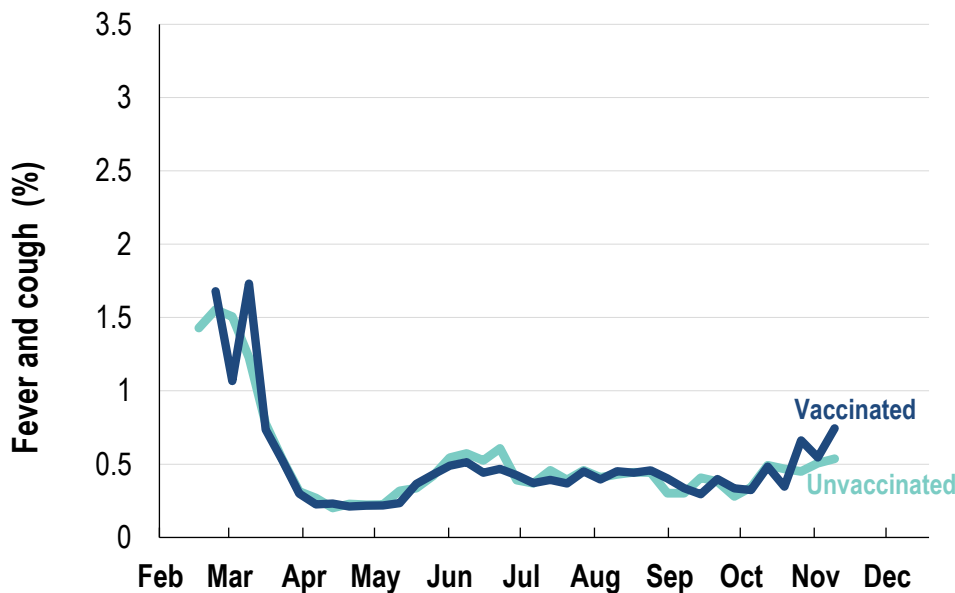
Vaccination rates:

Vaccination rates: 83.4% overall

Vaccinated participants:

	%
<5 years	78.7
5-17 years	62.7
18-64 years	82.0
65+ years	93.9
Working with patients	93.9

Influenza-like illness activity by vaccination status:



* Data are age standardised in this chart

