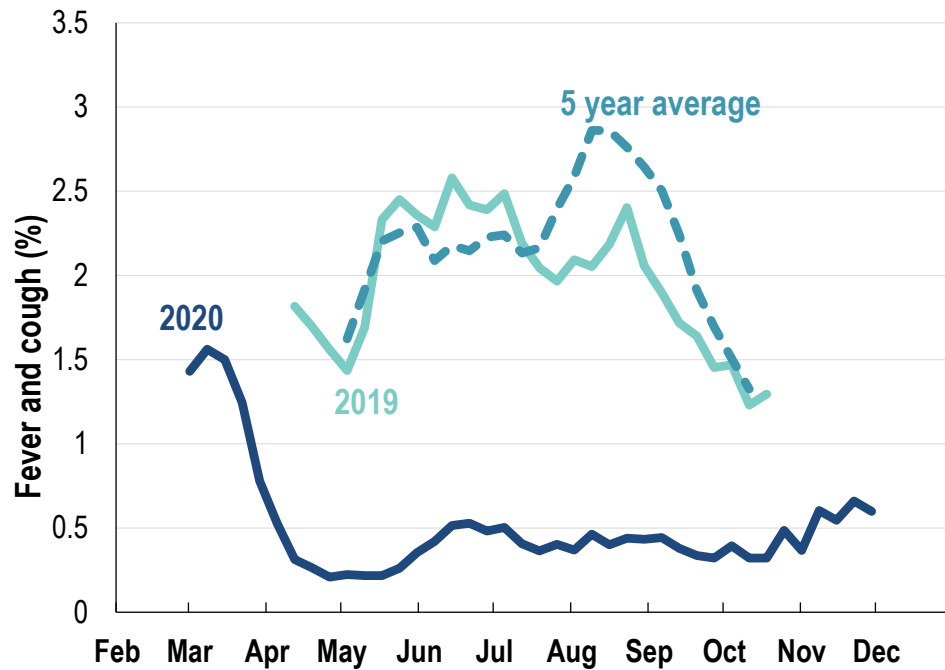




This week influenza-like illness activity is low 38,568 participants this week

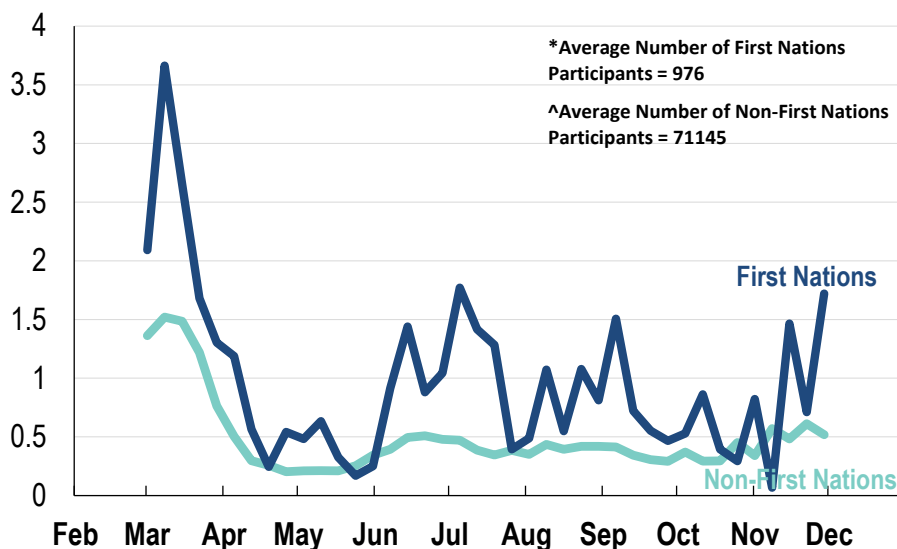
Influenza-like illness activity:

Fever and cough: 0.6% this week (flu-like illness activity is historically low)



*5 year average is calculated using 2015, 2016, 2017, 2018 and 2019 data
^ Data are age standardised in this chart

Influenza-like illness activity by Aboriginal and Torres Strait Islander status:

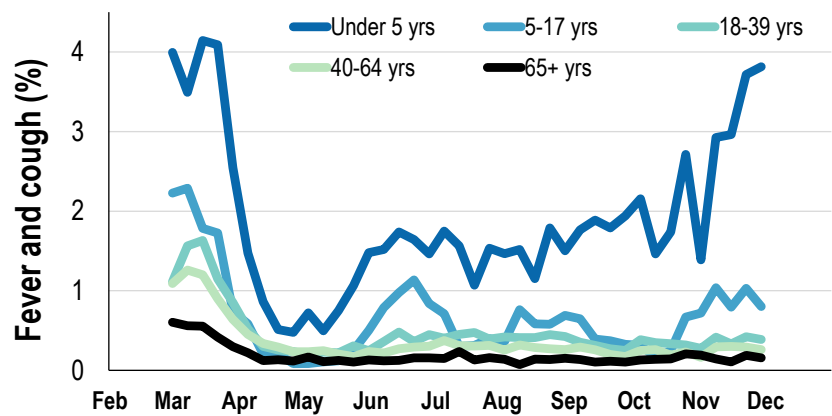


* Data are age standardised in this chart

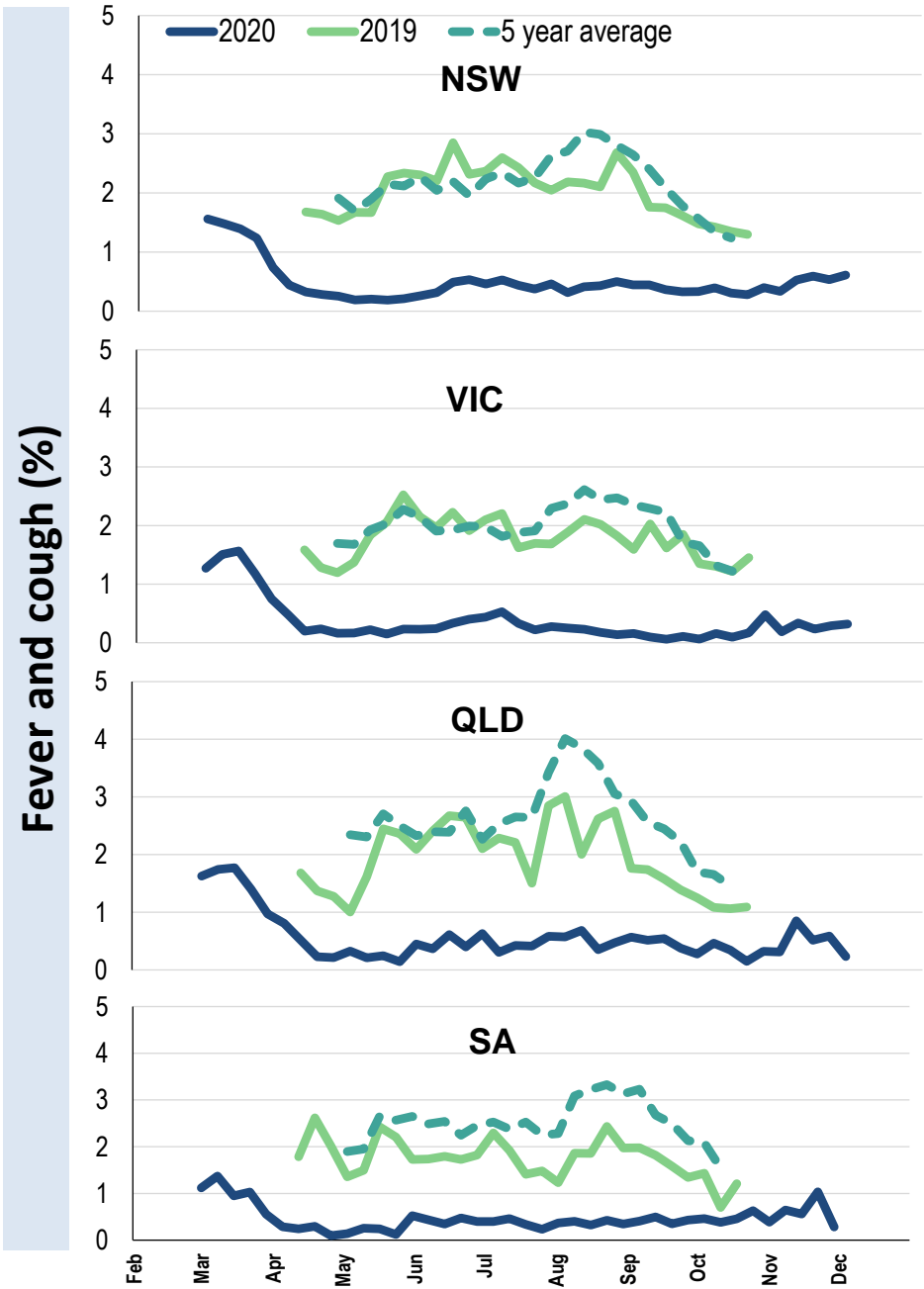
Influenza-like illness severity: <i>63.1% of participants with fever and cough sought medical advice this week</i>		
Influenza-like illness Severity	Week ending 29 November 2020 number (%)	Week ending 22 November 2020 number (%)
Number of participants	38568 (100%)	41137 (100%)
Fever & cough	141 (0.4%)	178 (0.4%)
Fever, cough & time-off normal duties	97 (0.3%)	142 (0.3%)
Fever, cough & 3 or more days off work/normal duties	69 (0.2%)	93 (0.2%)
Number of participants with fever and cough	141 (100%)	178 (100%)
*Sought medical advice for fever and cough	89 (63.1%)	107 (60.1%)
Admitted to hospital	4 (2.8%)	6 (3.4%)
Tested for influenza	22 (15.6%)	35 (19.7%)
Tested, result positive for influenza	1 (0.7%)	0 (0%)
Tested for coronavirus (COVID-19)	67 (47.5%)	105 (59%)
Tested, result positive for coronavirus (COVID-19)	0 (0%)	0 (0%)

*Includes those who sought medical advice from a general practitioner, COVID-19 clinic, emergency department, or were admitted to hospital for fever & cough

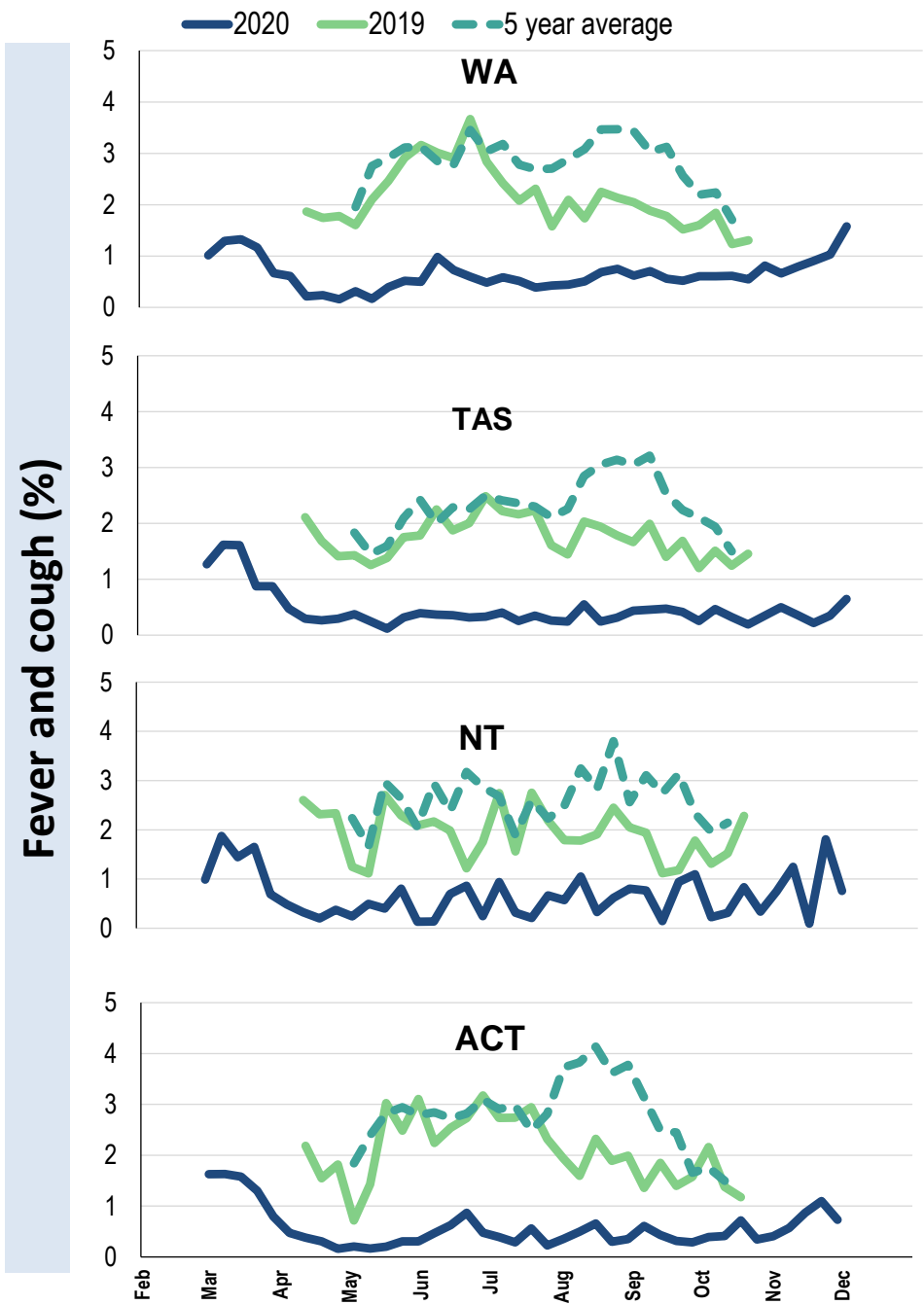
Influenza-like illness activity by age group (Australia):



Influenza-like illness activity by state/territory (age standardised):



Influenza-like illness activity by state/territory (age standardised):



Participation:

38,568 participants (41,137 last week)

State	Participants	%	Rate/100,000 population
NSW	13625	35.3%	172.6
VIC	7603	19.7%	119.6
QLD	4519	11.7%	91.3
SA	3564	9.2%	206.4
WA	3749	9.7%	144.9
TAS	2654	6.9%	508.4
NT	820	2.1%	333.2
ACT	2034	5.3%	493.0
AUS	38568	100.0%	156.1

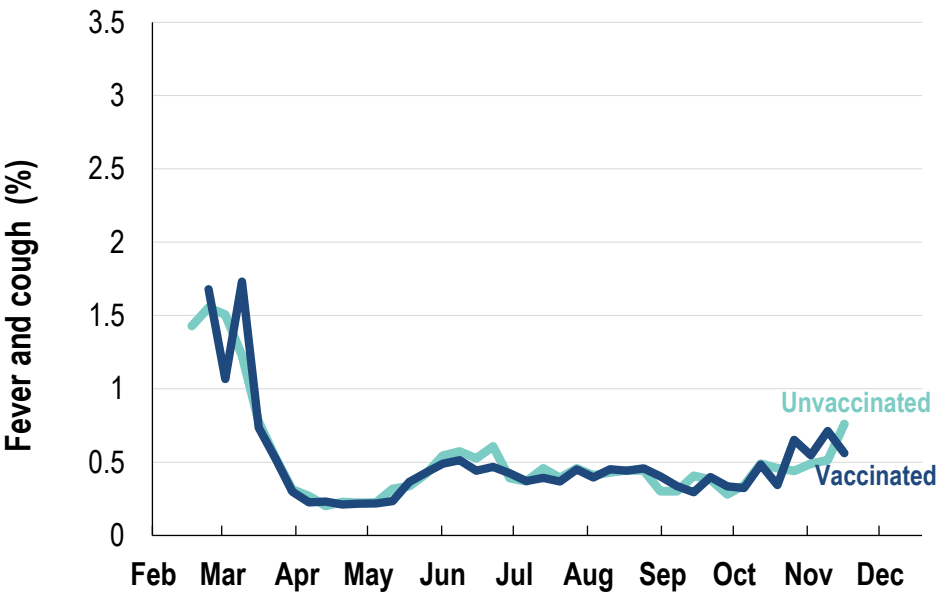
Vaccination rates:

Vaccination rates: 84% overall

Vaccinated participants:

	%
<5 years	77.0
5-17 years	63.4
18-64 years	82.7
65+ years	93.8
Working with patients	94.0

Influenza-like illness activity by vaccination status:



* Data are age standardised in this chart

