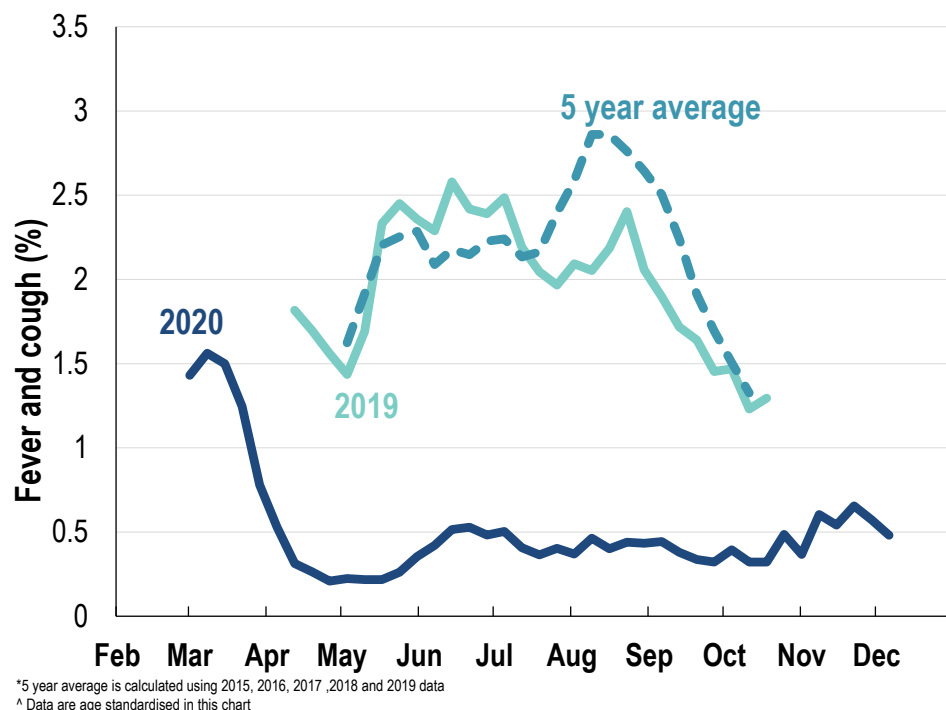


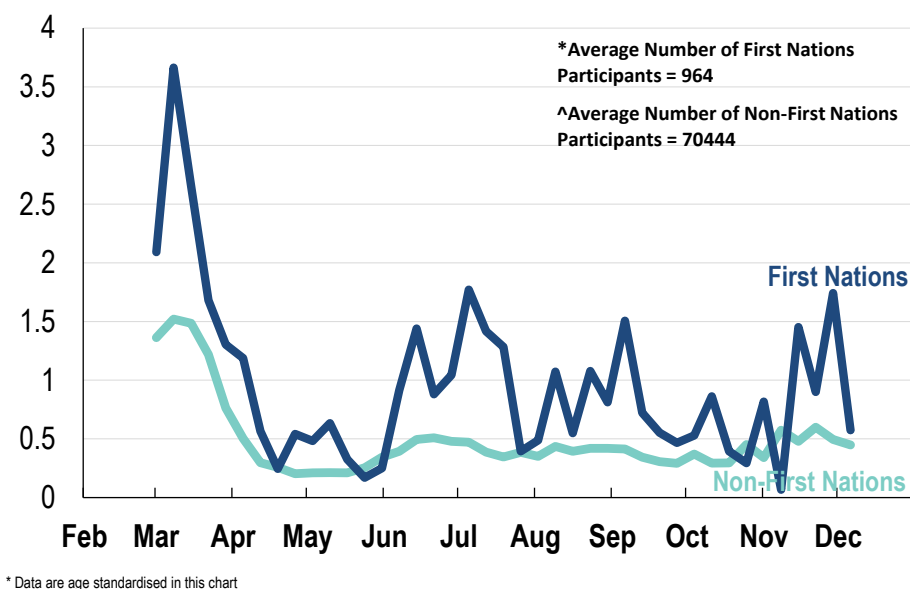
**This week influenza-like illness activity is low
38,177 participants this week**

Influenza-like illness activity:

Fever and cough: 0.5% this week (flu-like illness activity is historically low)



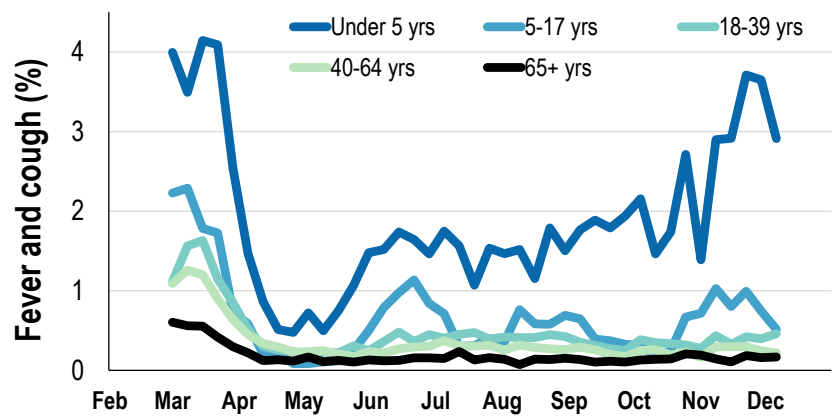
Influenza-like illness activity by Aboriginal and Torres Strait Islander status:



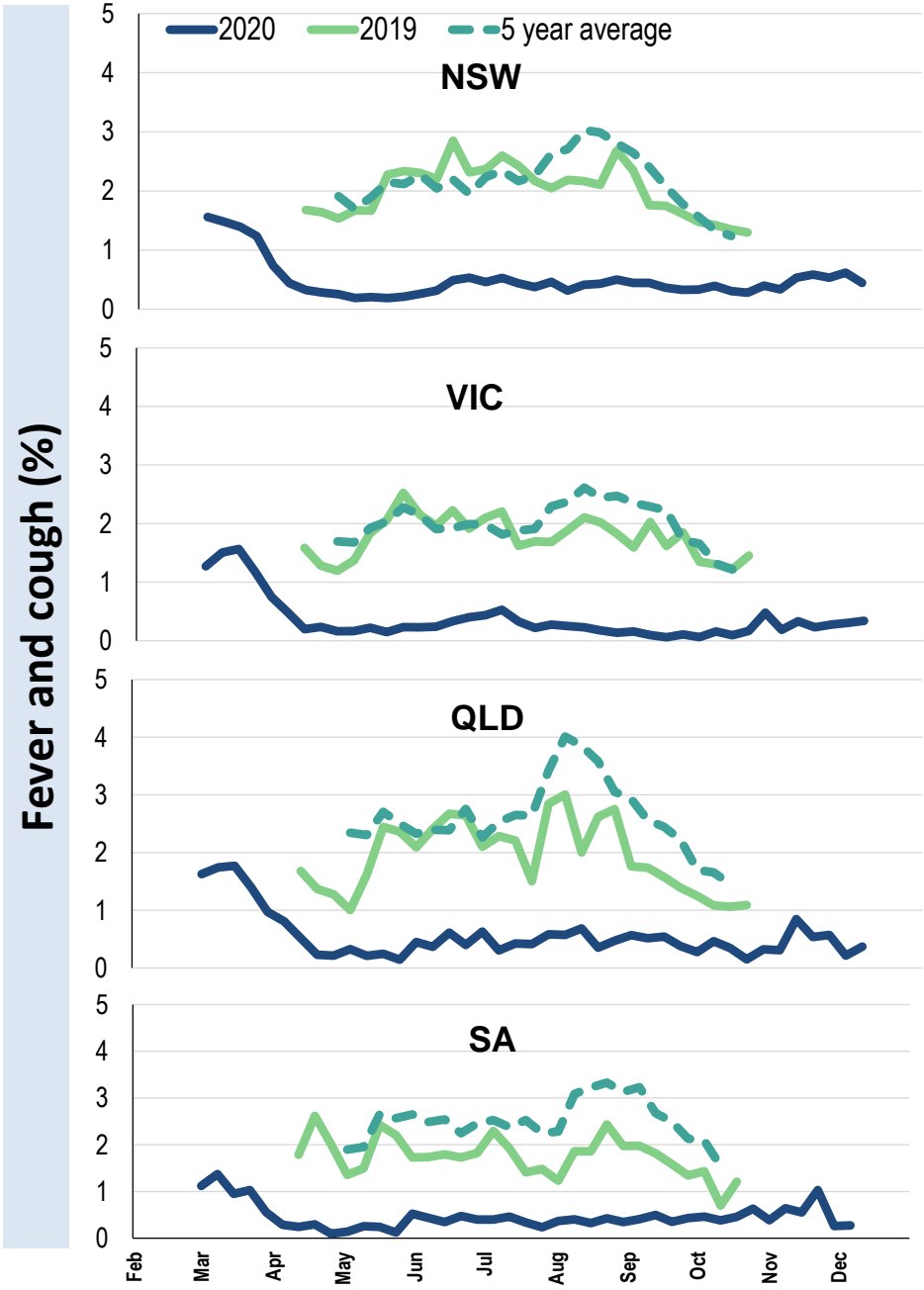
Influenza-like illness severity: <i>52.5% of participants with fever and cough sought medical advice this week</i>		
Influenza-like illness Severity	Week ending 06 December 2020 number (%)	Week ending 29 November 2020 number (%)
Number of participants	38177 (100%)	38568 (100%)
Fever & cough	120 (0.3%)	141 (0.4%)
Fever, cough & time-off normal duties	86 (0.2%)	99 (0.3%)
Fever, cough & 3 or more days off work/normal duties	48 (0.1%)	71 (0.2%)
Number of participants with fever and cough	120 (100%)	141 (100%)
*Sought medical advice for fever and cough	63 (52.5%)	91 (64.5%)
Admitted to hospital	5 (4.2%)	4 (2.8%)
Tested for influenza	10 (8.3%)	22 (15.6%)
Tested, result positive for influenza	0 (0%)	1 (0.7%)
Tested for coronavirus (COVID-19)	51 (42.5%)	71 (50.4%)
Tested, result positive for coronavirus (COVID-19)	0 (0%)	0 (0%)

*Includes those who sought medical advice from a general practitioner, COVID-19 clinic, emergency department, or were admitted to hospital for fever & cough

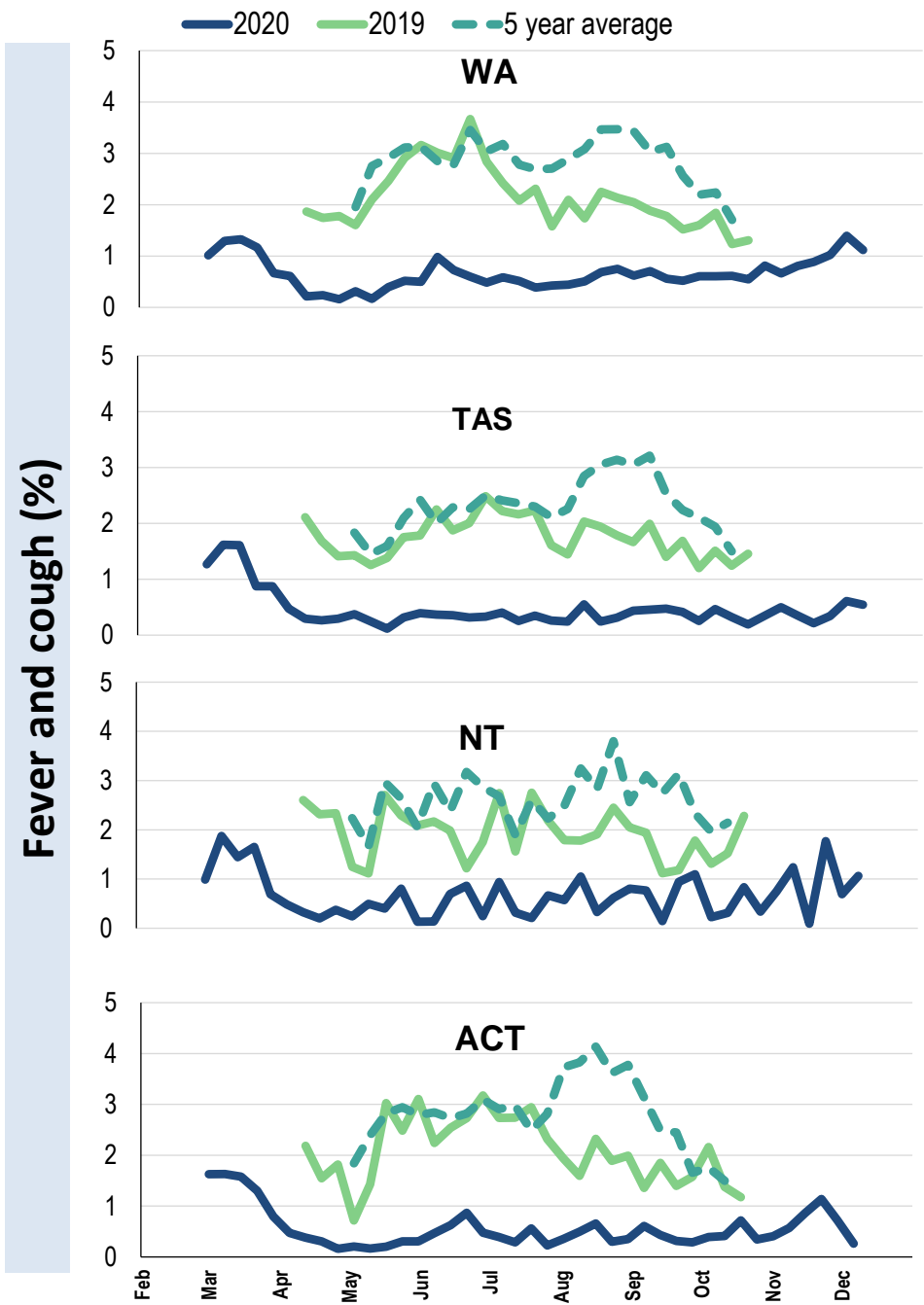
Influenza-like illness activity by age group (Australia):



Influenza-like illness activity by state/territory (age standardised):



Influenza-like illness activity by state/territory (age standardised):



Participation:

38,177 participants (38,568 last week)

State	Participants	% Rate/100,000 population
NSW	13424	35.2% 170.0
VIC	7520	19.7% 118.3
QLD	4506	11.8% 91.1
SA	3552	9.3% 205.7
WA	3716	9.7% 143.6
TAS	2647	6.9% 507.1
NT	795	2.1% 323.0
ACT	2017	5.3% 488.9
AUS	38177	100.0% 154.5

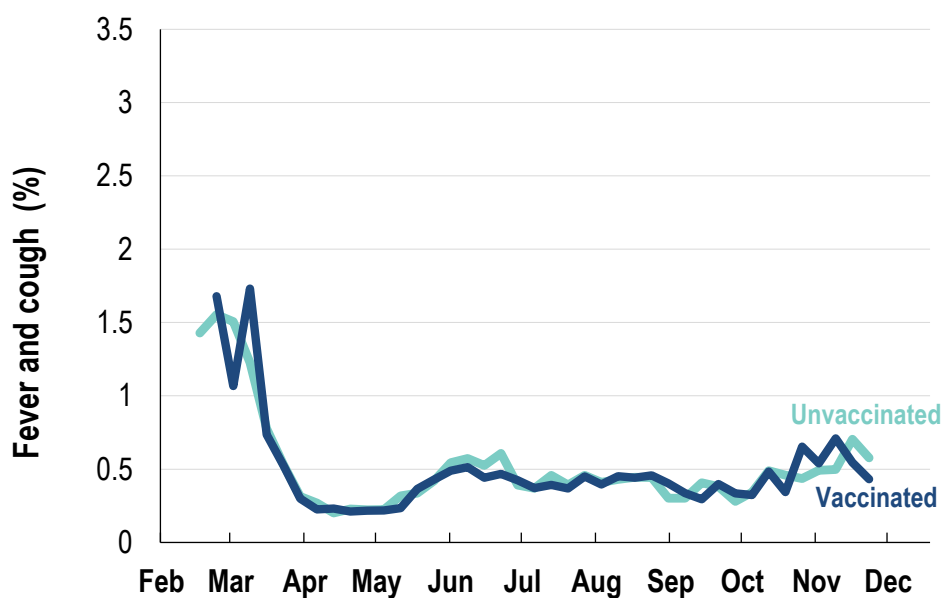
Vaccination rates:

Vaccination rates: 84.1% overall

Vaccinated participants:

	%
<5 years	78.2
5-17 years	63.3
18-64 years	82.7
65+ years	93.9
Working with patients	93.9

Influenza-like illness activity by vaccination status:



* Data are age standardised in this chart



FluTracking
Tracking COVID-19