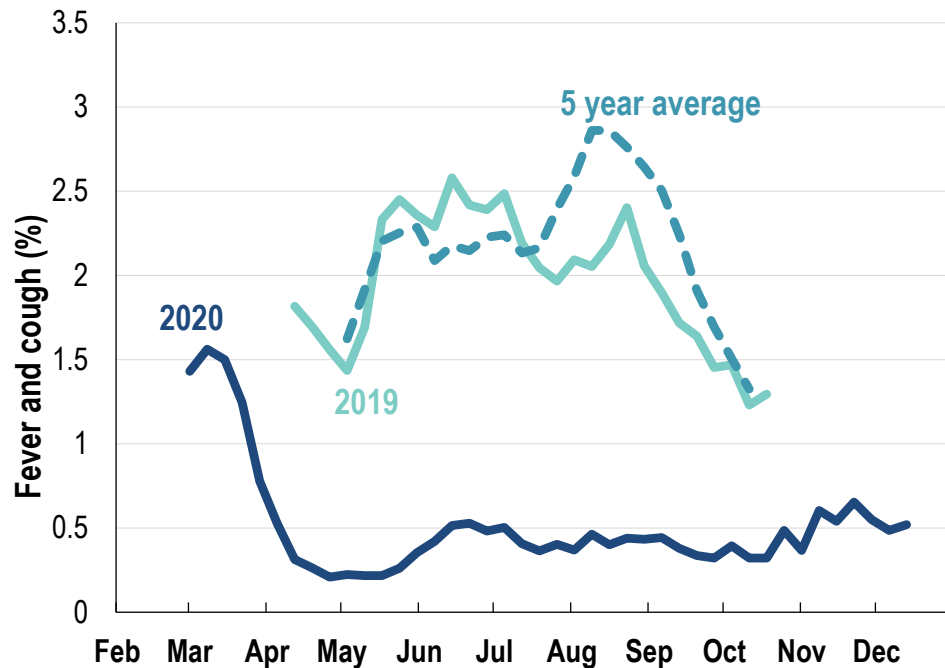


This week influenza-like illness activity is low
38,491 participants this week

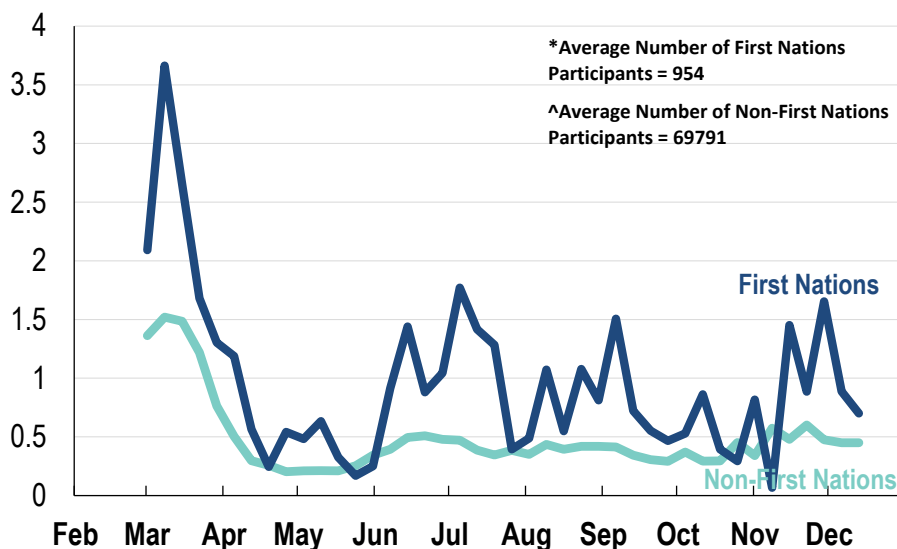
Influenza-like illness activity:

Fever and cough: 0.5% this week (flu-like illness activity is historically low)



*5 year average is calculated using 2015, 2016, 2017, 2018 and 2019 data
^ Data are age standardised in this chart

Influenza-like illness activity by Aboriginal and Torres Strait Islander status:



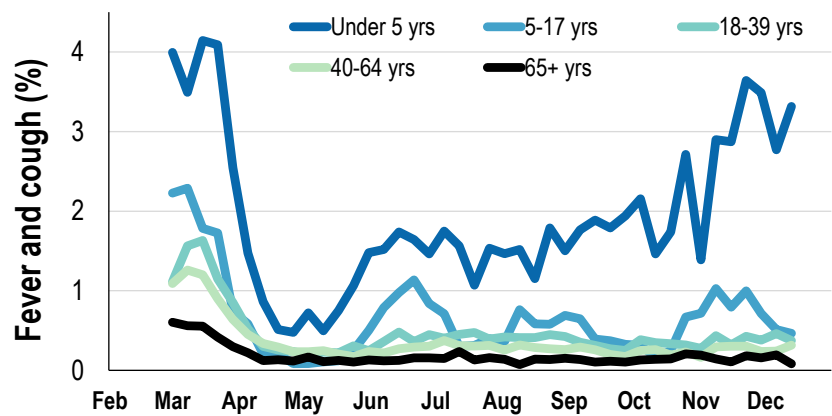
* Data are age standardised in this chart

Influenza-like illness severity:
52.4% of participants with fever and cough sought medical advice this week

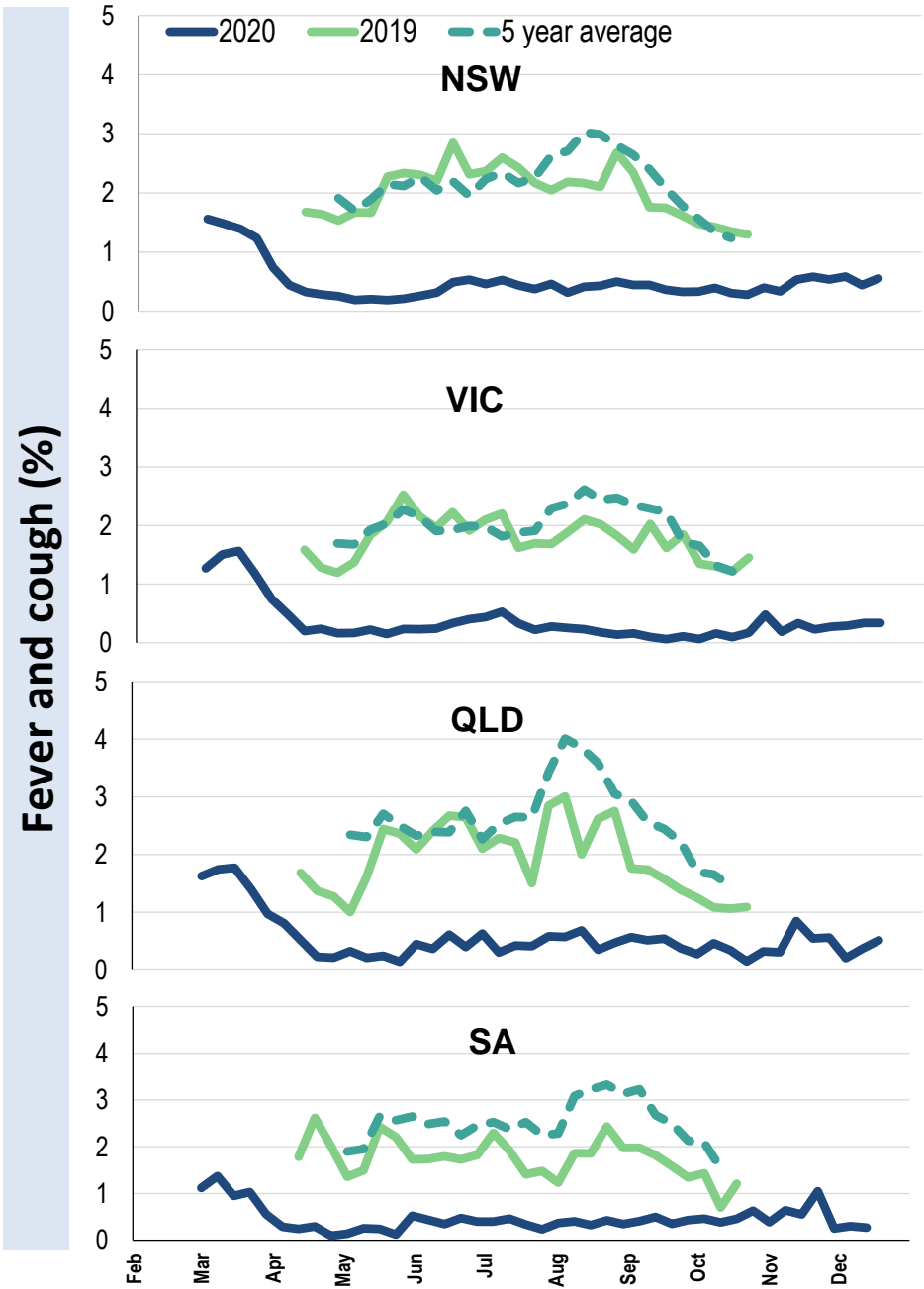
Influenza-like illness Severity	Week ending 13 December 2020 number (%)	Week ending 06 December 2020 number (%)
Number of participants	38491 (100%)	38177 (100%)
Fever & cough	126 (0.3%)	120 (0.3%)
Fever, cough & time-off normal duties	81 (0.2%)	89 (0.2%)
Fever, cough & 3 or more days off work/normal duties	42 (0.1%)	53 (0.1%)
Number of participants with fever and cough	126 (100%)	120 (100%)
*Sought medical advice for fever and cough	66 (52.4%)	67 (55.8%)
Admitted to hospital	3 (2.4%)	5 (4.2%)
Tested for influenza	18 (14.3%)	12 (10%)
Tested, result positive for influenza	1 (0.8%)	1 (0.8%)
Tested for coronavirus (COVID-19)	48 (38.1%)	54 (45%)
Tested, result positive for coronavirus (COVID-19)	0 (0%)	0 (0%)

*Includes those who sought medical advice from a general practitioner, COVID-19 clinic, emergency department, or were admitted to hospital for fever & cough

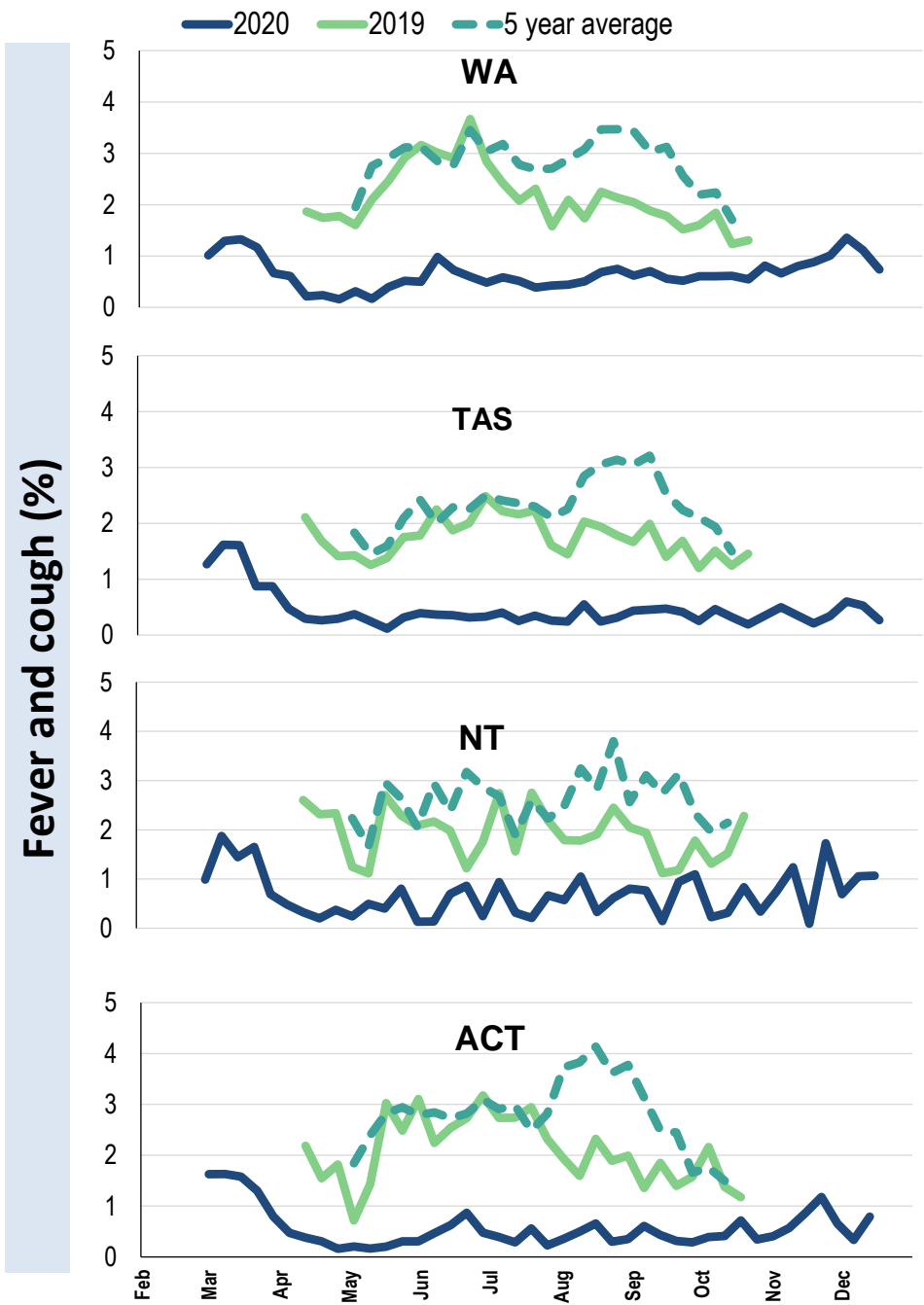
Influenza-like illness activity by age group (Australia):



Influenza-like illness activity by state/territory (age standardised):



Influenza-like illness activity by state/territory (age standardised):



Participation:

38,491 participants (38,177 last week)

State	Participants	% Rate/100,000 population
NSW	13566	35.2% 171.8
VIC	7514	19.5% 118.2
QLD	4528	11.8% 91.5
SA	3540	9.2% 205.0
WA	3871	10.1% 149.6
TAS	2629	6.8% 503.6
NT	814	2.1% 330.8
ACT	2029	5.3% 491.8
AUS	38491	100.0% 155.8

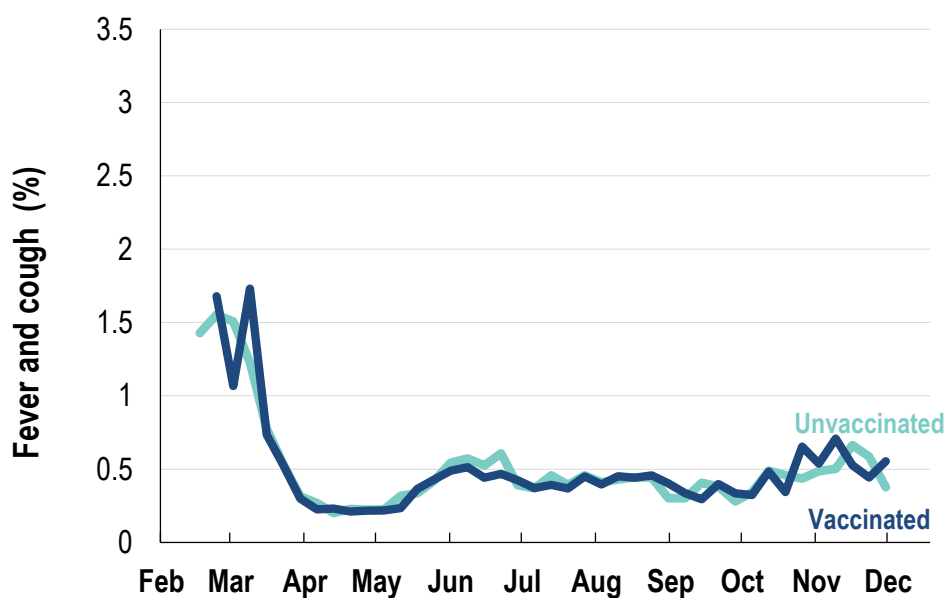
Vaccination rates:

Vaccination rates: 84.2% overall

Vaccinated participants:

	%
<5 years	77.8
5-17 years	63.8
18-64 years	82.7
65+ years	93.9
Working with patients	94.0

Influenza-like illness activity by vaccination status:



* Data are age standardised in this chart



FluTracking
Tracking COVID-19