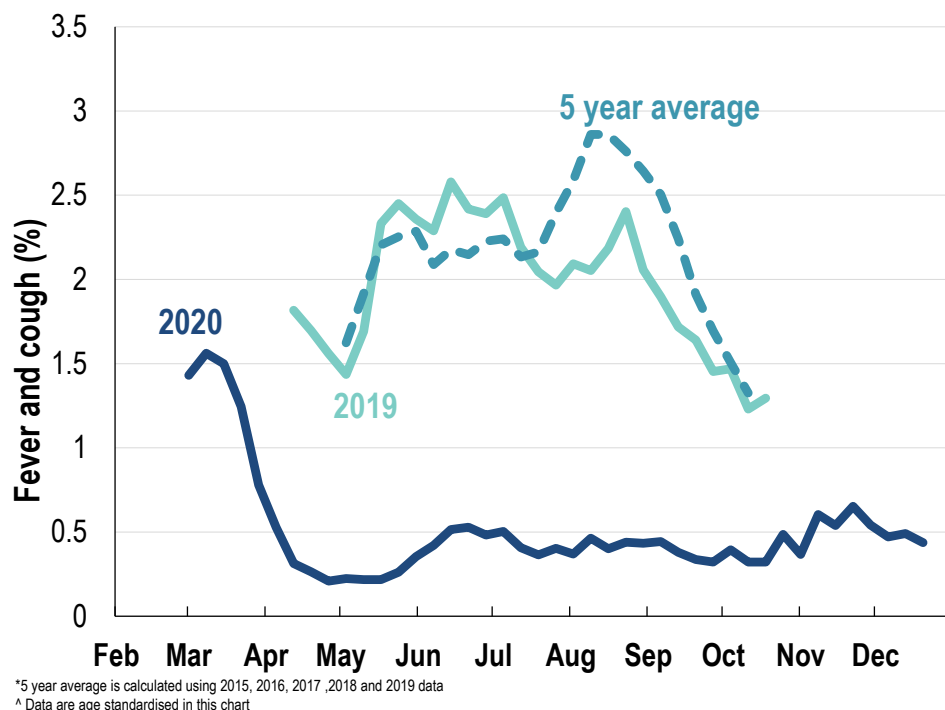


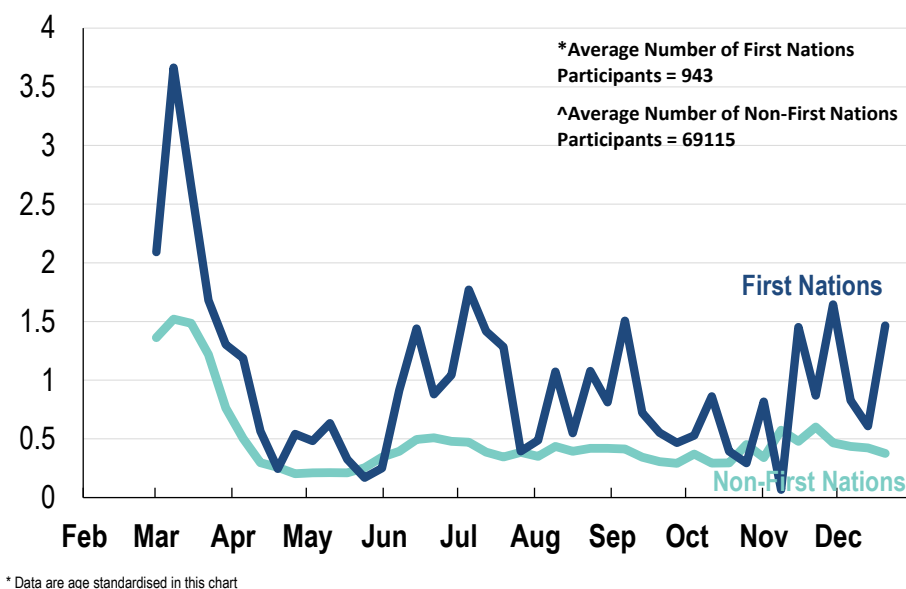
**This week influenza-like illness activity is low  
36,636 participants this week**

**Influenza-like illness activity:**

*Fever and cough: 0.4% this week (flu-like illness activity is historically low)*



**Influenza-like illness activity by Aboriginal and Torres Strait Islander status:**

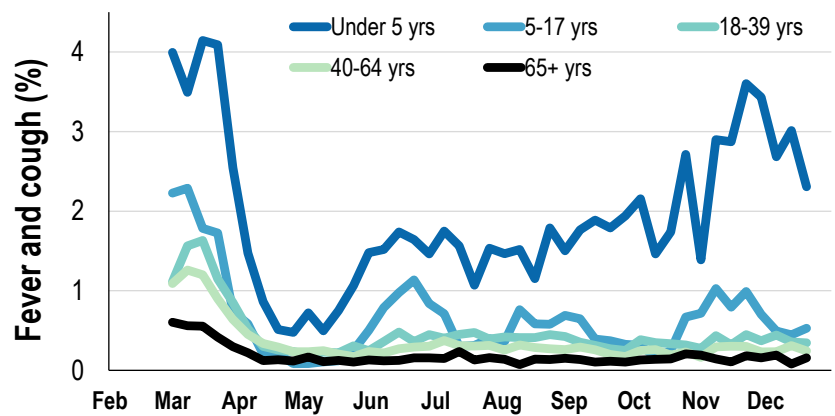


**Influenza-like illness severity:**  
**50.9% of participants with fever and cough sought medical advice this week**

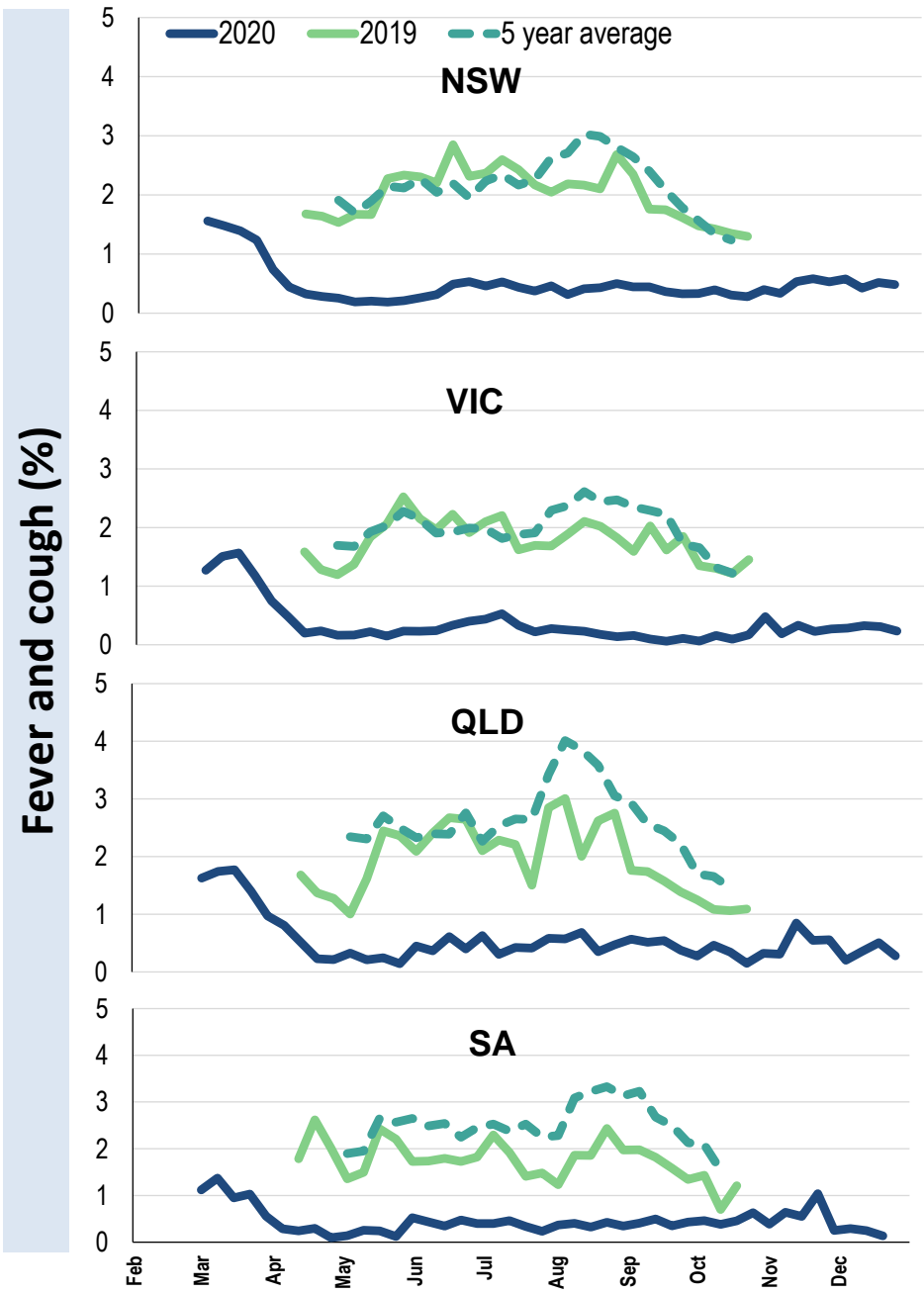
Influenza-like illness Severity	Week ending 20 December 2020 number (%)	Week ending 13 December 2020 number (%)
<b>Number of participants</b>	36636 (100%)	38491 (100%)
Fever & cough	108 (0.3%)	126 (0.3%)
Fever, cough & time-off normal duties	70 (0.2%)	86 (0.2%)
Fever, cough & 3 or more days off work/normal duties	36 (0.1%)	53 (0.1%)
<b>Number of participants with fever and cough</b>	108 (100%)	126 (100%)
*Sought medical advice for fever and cough	55 (50.9%)	74 (58.7%)
Admitted to hospital	0 (0%)	3 (2.4%)
Tested for influenza	7 (6.5%)	22 (17.5%)
Tested, result positive for influenza	0 (0%)	2 (1.6%)
Tested for coronavirus (COVID-19)	39 (36.1%)	60 (47.6%)
Tested, result positive for coronavirus (COVID-19)	0 (0%)	0 (0%)

\*Includes those who sought medical advice from a general practitioner, COVID-19 clinic, emergency department, or were admitted to hospital for fever & cough

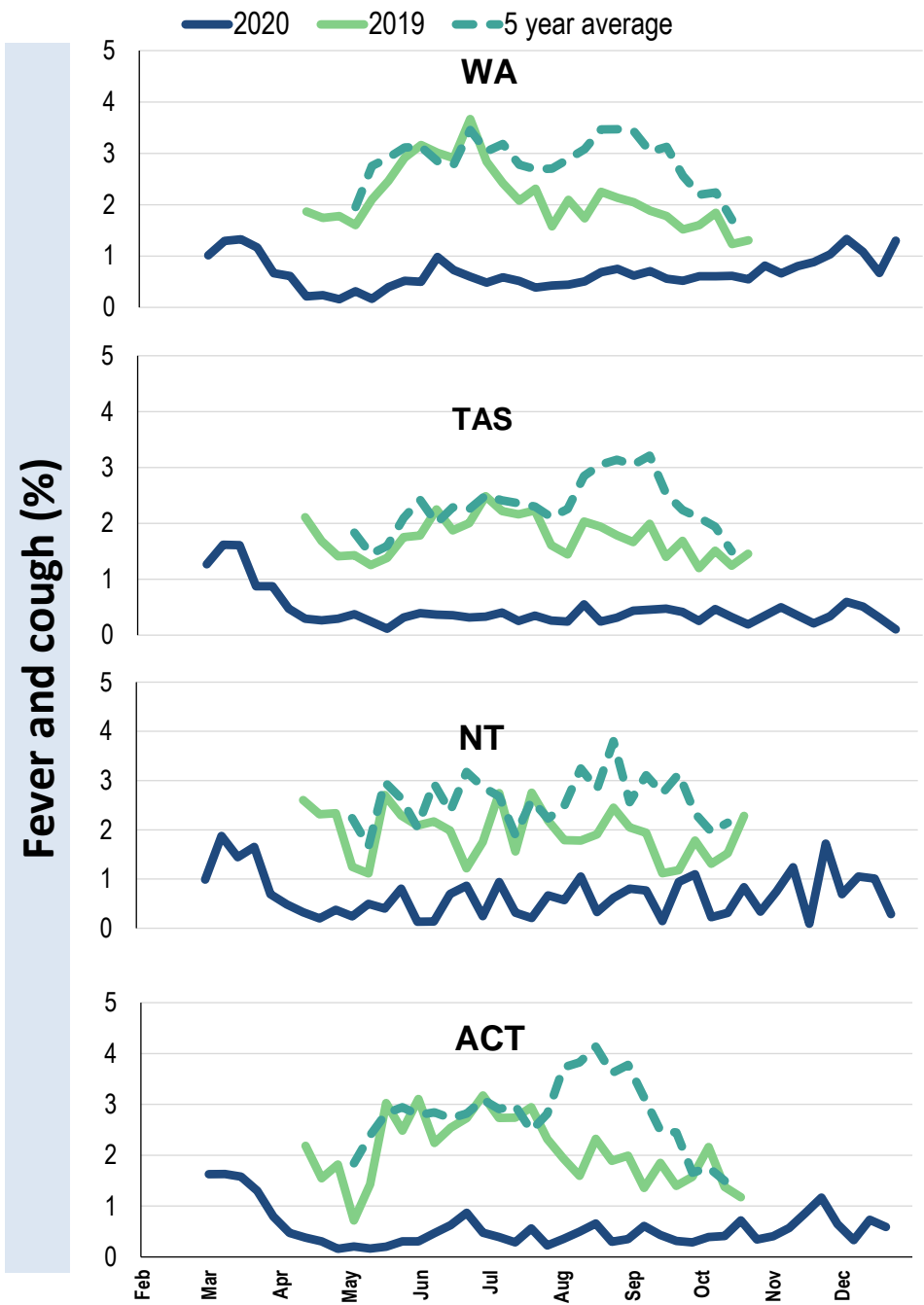
Influenza-like illness activity by age group (Australia):



Influenza-like illness activity by state/territory (age standardised):



Influenza-like illness activity by state/territory (age standardised):



## Participation:

36,636 participants (38,491 last week)

### State

NSW  
VIC  
QLD  
SA  
WA  
TAS  
NT  
ACT  
AUS

### Participants

12965  
7267  
4330  
3345  
3574  
2560  
652  
1943  
36636

### % Rate/100,000 population

35.4% **164.2**  
19.8% **114.3**  
11.8% **87.5**  
9.1% **193.7**  
9.8% **138.1**  
7.0% **490.4**  
1.8% **264.9**  
5.3% **470.9**  
100.0% **148.3**

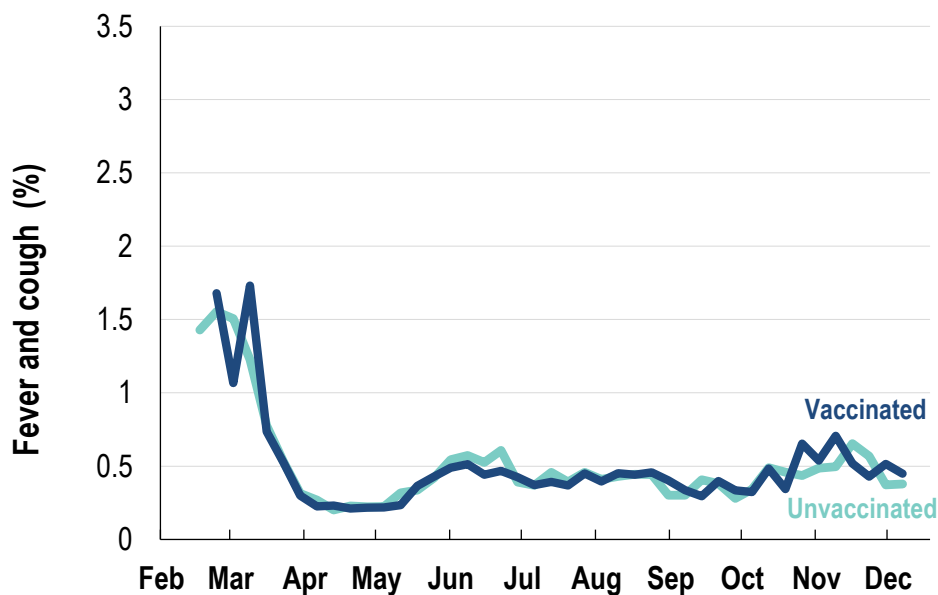
## Vaccination rates:

**Vaccination rates: 84.4% overall**

### Vaccinated participants:

	%
<5 years	77.7
5-17 years	64.6
18-64 years	82.7
65+ years	94.0
Working with patients	94.0

## Influenza-like illness activity by vaccination status:



\* Data are age standardised in this chart



**FluTracking**  
Tracking COVID-19