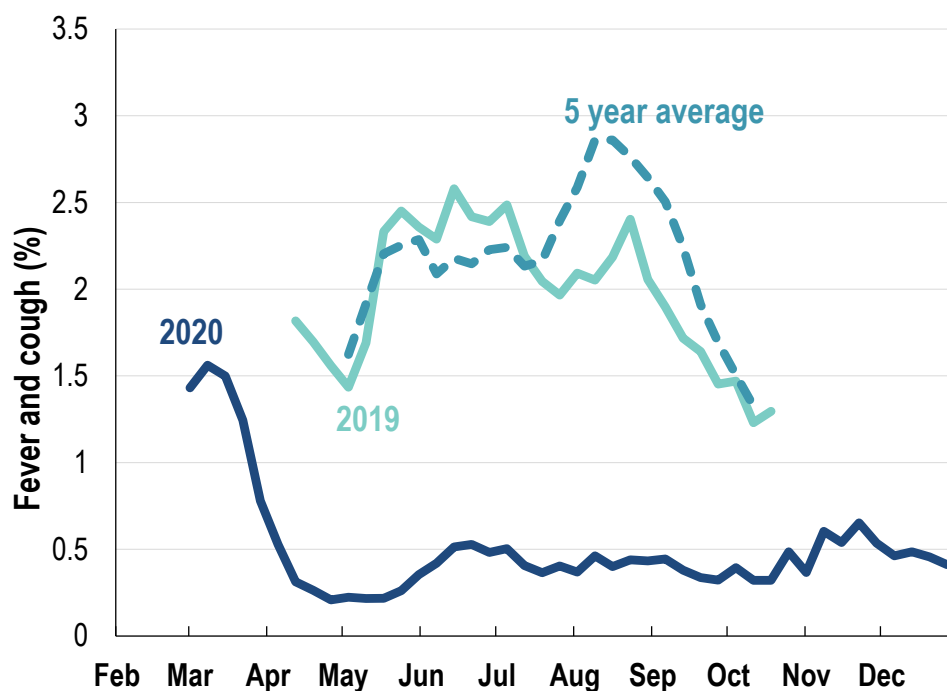


This week influenza-like illness activity is low 28,469 participants this week

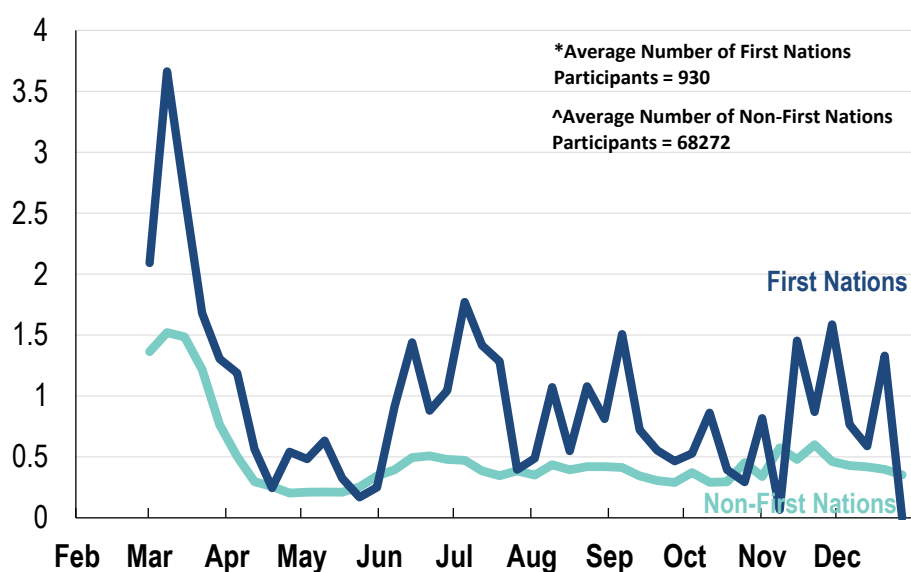
Influenza-like illness activity:

Fever and cough: 0.4% this week (flu-like illness activity is historically low)



*5 year average is calculated using 2015, 2016, 2017, 2018 and 2019 data
^ Data are age standardised in this chart

Influenza-like illness activity by Aboriginal and Torres Strait Islander status:



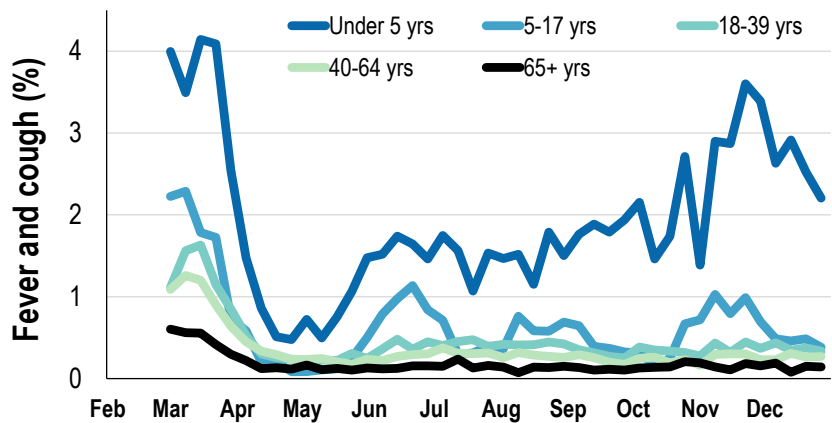
* Data are age standardised in this chart

Influenza-like illness severity:
46.8% of participants with fever and cough sought medical advice this week

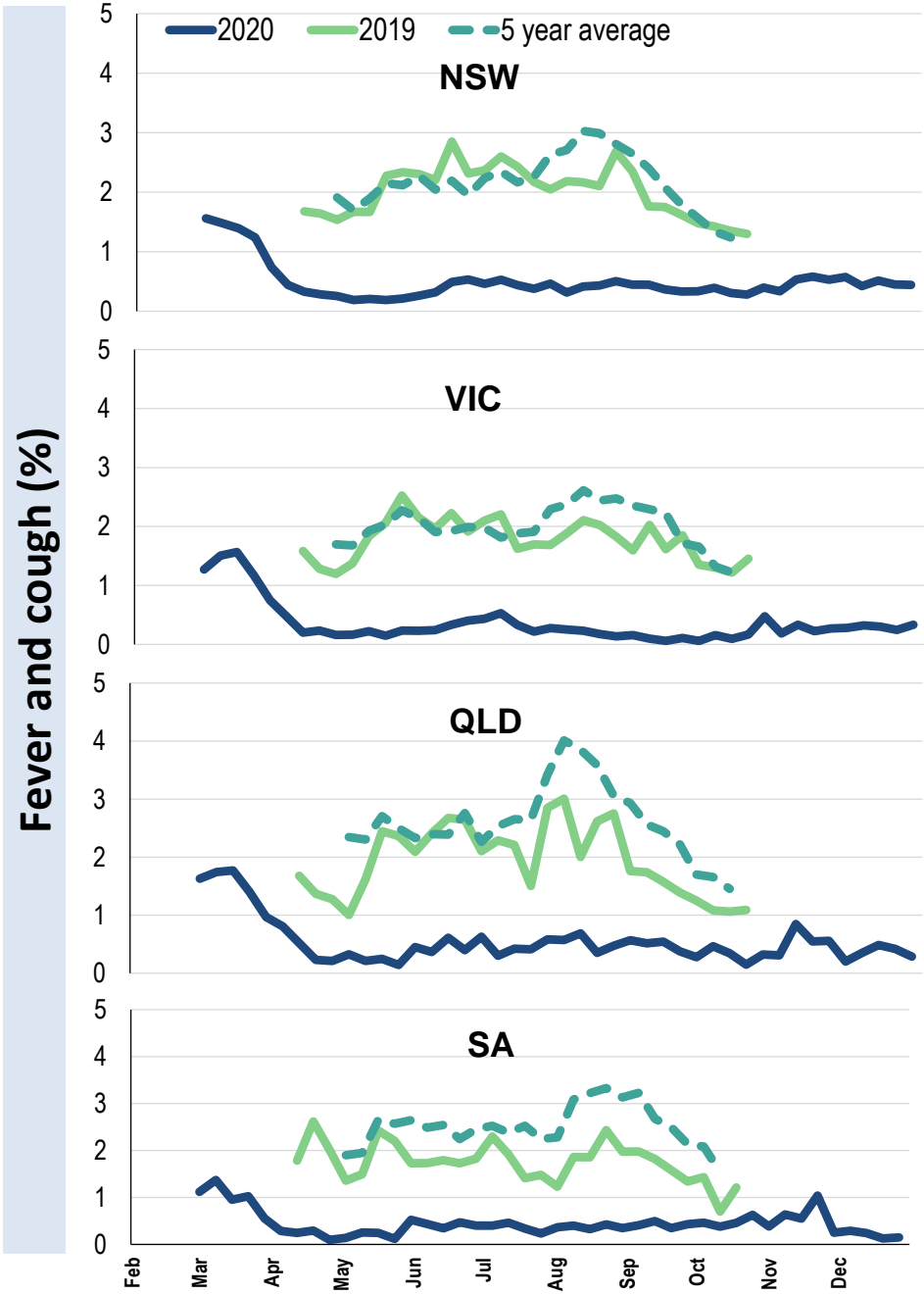
Influenza-like illness Severity	Week ending 27 December 2020 number (%)	Week ending 20 December 2020 number (%)
Number of participants	28469 (100%)	33949 (100%)
Fever & cough	79 (0.3%)	97 (0.3%)
Fever, cough & time-off normal duties	33 (0.1%)	67 (0.2%)
Fever, cough & 3 or more days off work/normal duties	19 (0.1%)	39 (0.1%)
Number of participants with fever and cough	79 (100%)	97 (100%)
*Sought medical advice for fever and cough	37 (46.8%)	54 (55.7%)
Admitted to hospital	0 (0%)	1 (1%)
Tested for influenza	6 (7.6%)	11 (11.3%)
Tested, result positive for influenza	0 (0%)	1 (1%)
Tested for coronavirus (COVID-19)	34 (43%)	42 (43.3%)
Tested, result positive for coronavirus (COVID-19)	1 (1.3%)	0 (0%)

*Includes those who sought medical advice from a general practitioner, COVID-19 clinic, emergency department, or were admitted to hospital for fever & cough

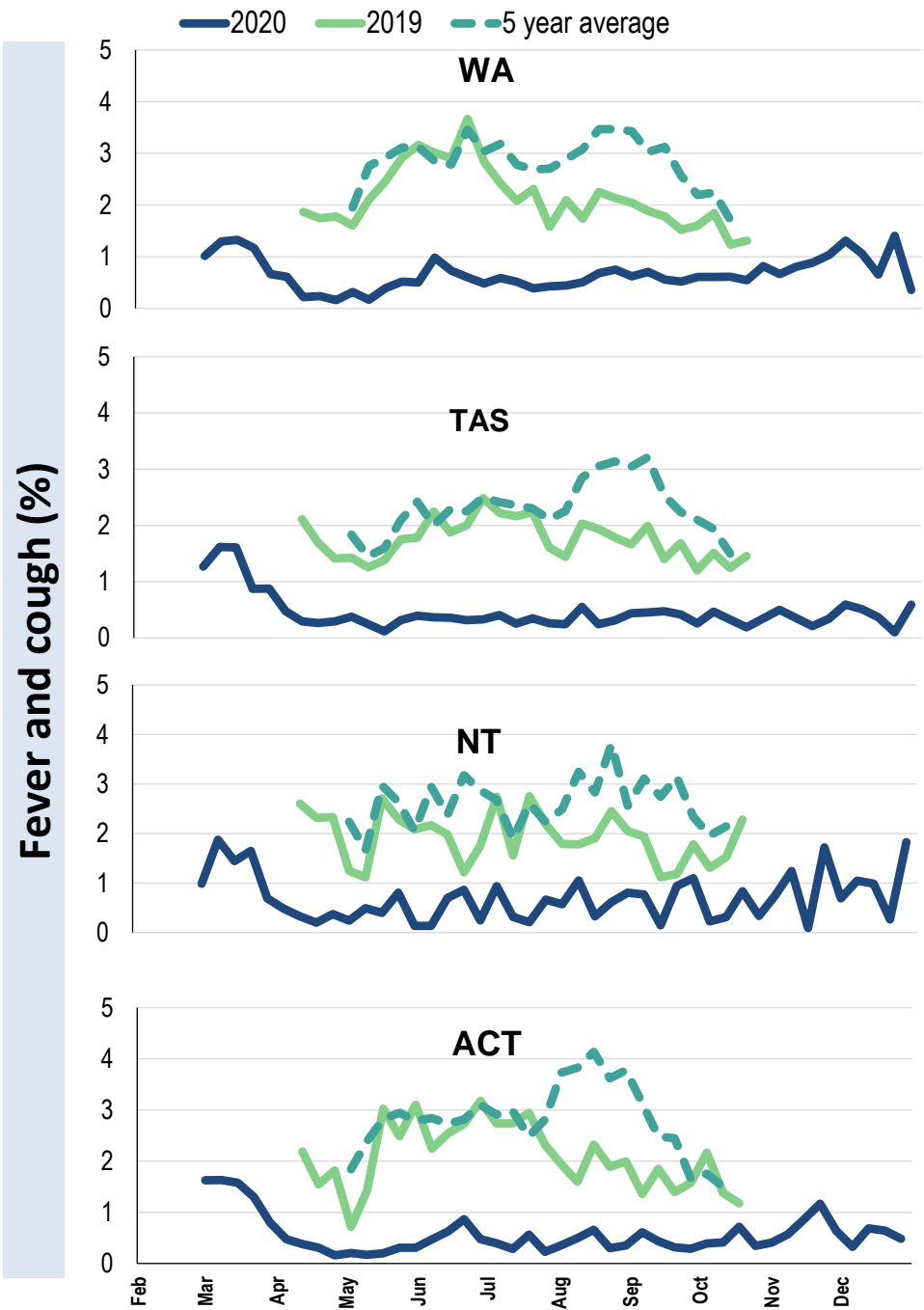
Influenza-like illness activity by age group (Australia):



Influenza-like illness activity by state/territory (age standardised):



Influenza-like illness activity by state/territory (age standardised):



Participation:

28,469 participants (33,949 last week)

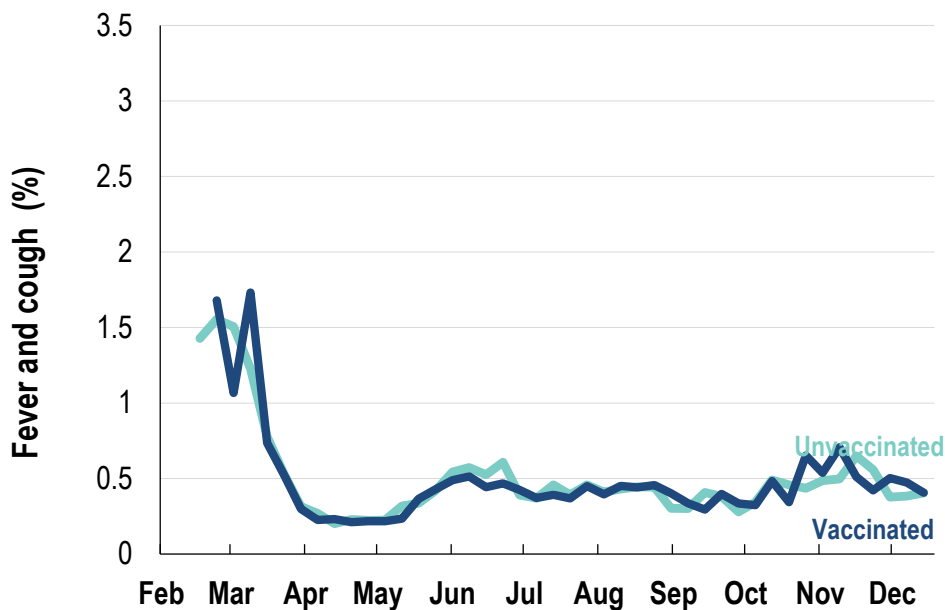
State	Participants	%	Rate/100,000 population
NSW	10394	36.5%	131.6
VIC	5895	20.7%	92.7
QLD	3611	12.7%	73.0
SA	2392	8.4%	138.5
WA	2389	8.4%	92.3
TAS	1732	6.1%	331.8
NT	428	1.5%	173.9
ACT	1628	5.7%	394.6
AUS	28469	100.0%	115.2

Vaccination rates:

Vaccination rates: 85.3% overall

Vaccinated participants:	%
<5 years	79.8
5-17 years	65.9
18-64 years	82.7
65+ years	94.0
Working with patients	93.8

Influenza-like illness activity by vaccination status:



* Data are age standardised in this chart

