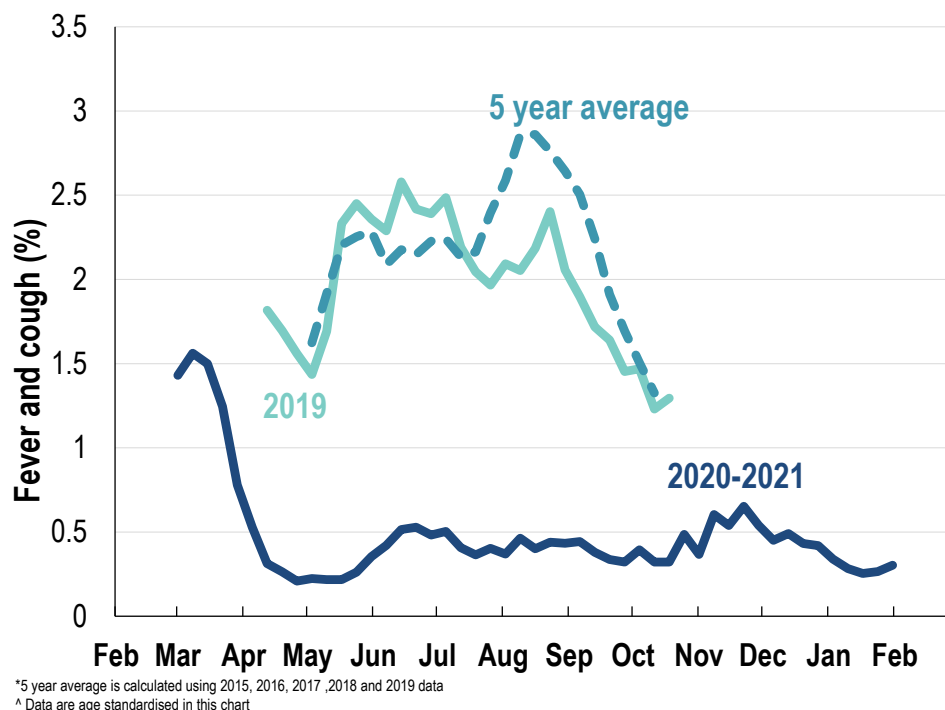


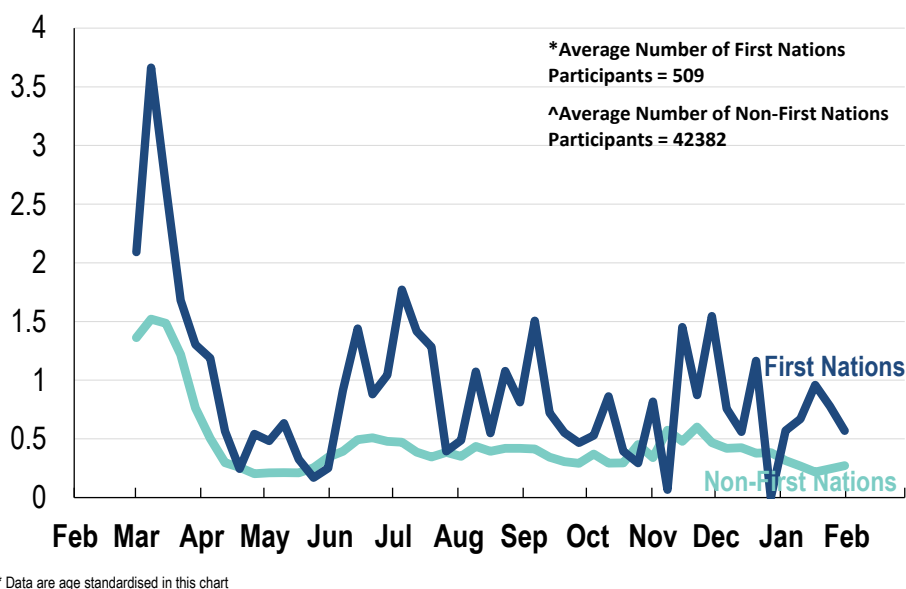
## This week influenza-like illness activity is low 47,545 participants this week

### Influenza-like illness activity:

*Fever and cough: 0.3% this week (flu-like illness activity is historically low)*



### Influenza-like illness activity by Aboriginal and Torres Strait Islander status:

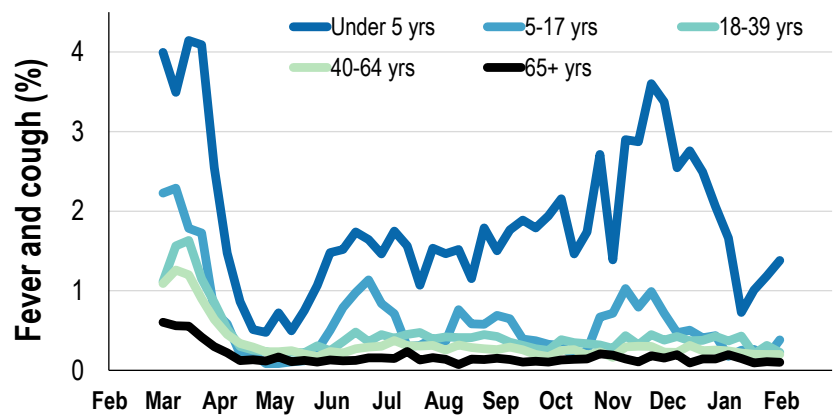


**Influenza-like illness severity:**  
**61.4% of participants with fever and cough sought medical advice this week**

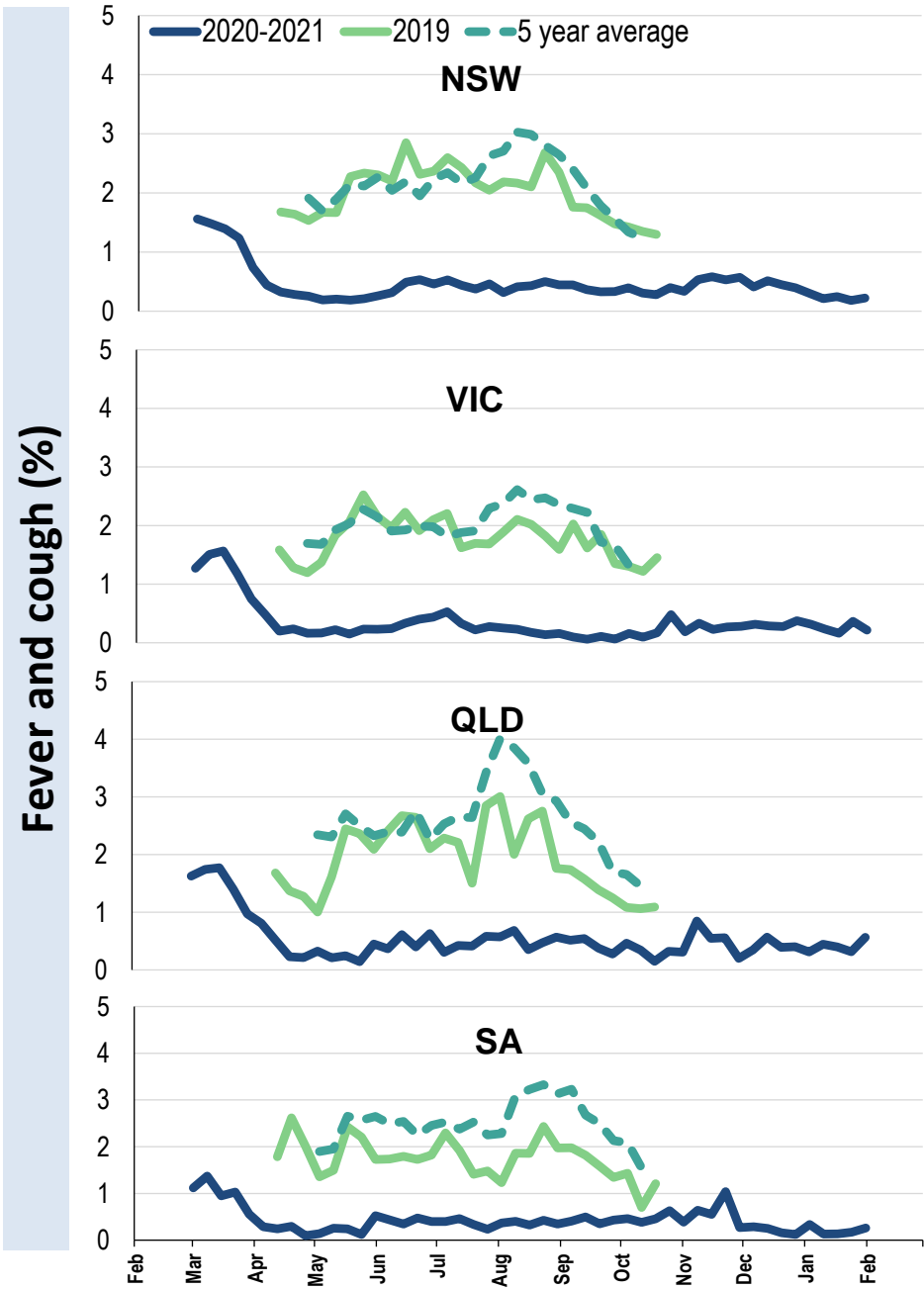
Influenza-like illness Severity	Week ending 31 January 2021 number (%)	Week ending 24 January 2021 number (%)
<b>Number of participants</b>	47545 (100%)	37790 (100%)
Fever & cough	101 (0.2%)	75 (0.2%)
Fever, cough & time-off normal duties	64 (0.1%)	55 (0.1%)
Fever, cough & 3 or more days off work/normal duties	38 (0.1%)	34 (0.1%)
<b>Number of participants with fever and cough</b>	101 (100%)	75 (100%)
*Sought medical advice for fever and cough	62 (61.4%)	45 (60%)
Admitted to hospital	0 (0%)	4 (5.3%)
Tested for influenza	13 (12.9%)	15 (20%)
Tested, result positive for influenza	0 (0%)	2 (2.7%)
Tested for coronavirus (COVID-19)	59 (58.4%)	48 (64%)
Tested, result positive for coronavirus (COVID-19)	0 (0%)	0 (0%)

\*Includes those who sought medical advice from a general practitioner, COVID-19 clinic, emergency department, or were admitted to hospital for fever & cough

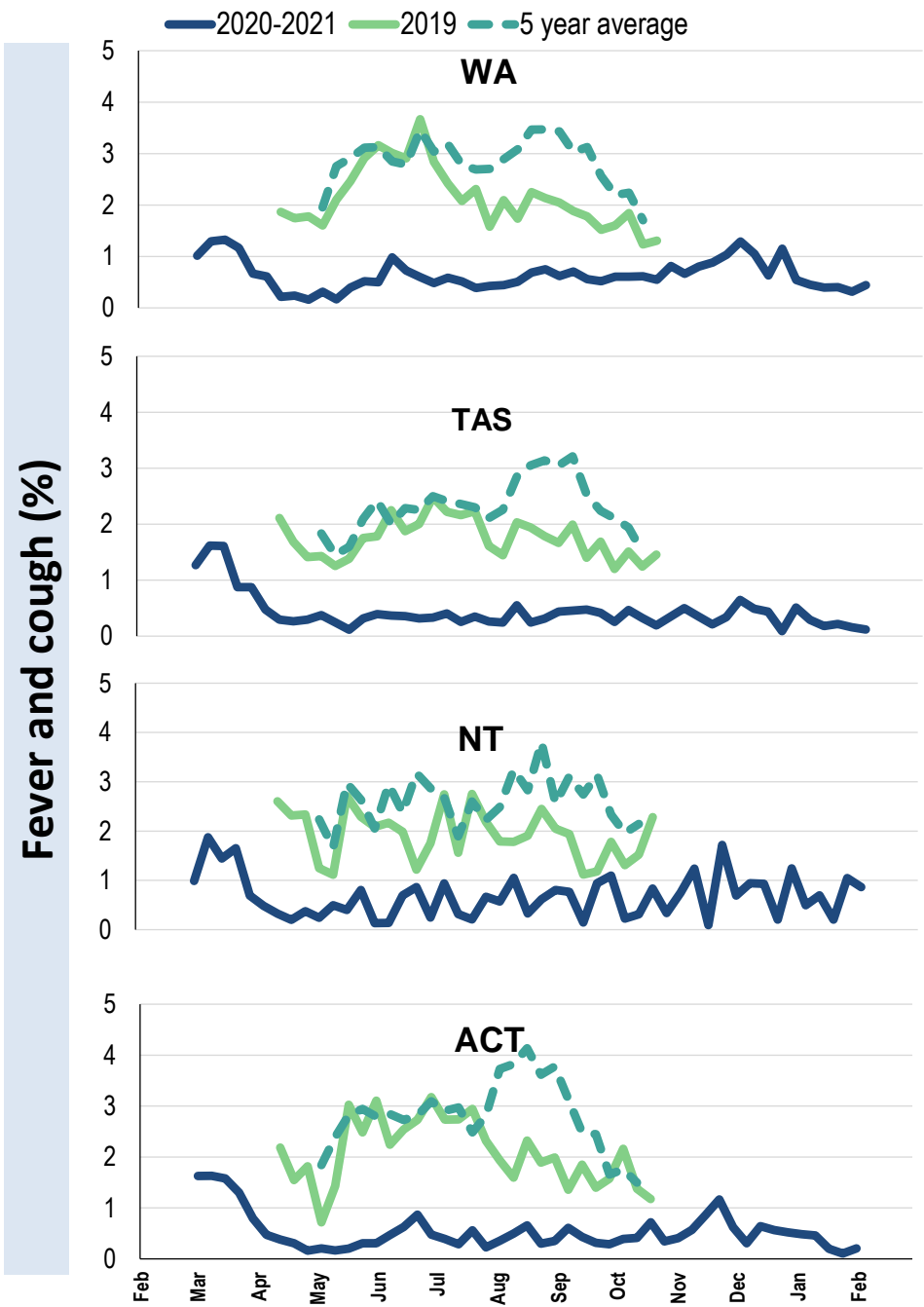
Influenza-like illness activity by age group (Australia):



Influenza-like illness activity by state/territory (age standardised):



Influenza-like illness activity by state/territory (age standardised):



Participation:  
47,545 participants (37,790 last week)

State	Participants	% Rate/100,000 population
NSW	16753	35.2% 212.2
VIC	9241	19.4% 145.3
QLD	5893	12.4% 119.1
SA	4315	9.1% 249.9
WA	4869	10.2% 188.2
TAS	3107	6.5% 595.2
NT	882	1.9% 358.4
ACT	2485	5.2% 602.3
AUS	47545	100.0% 192.5



FluTracking  
Tracking COVID-19