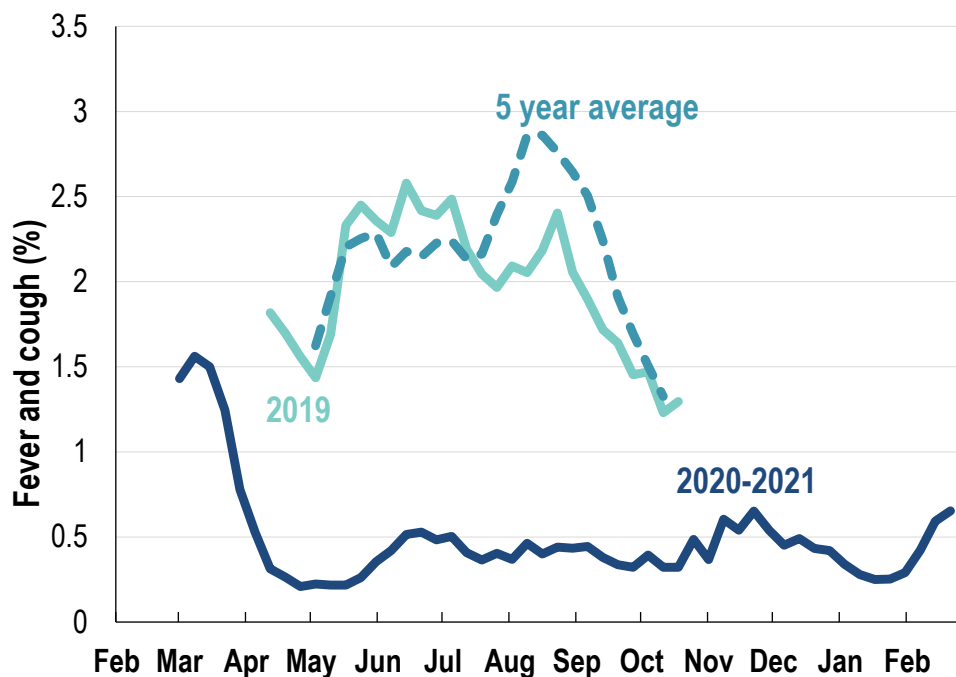


**This week influenza-like illness activity is low  
48,467 participants this week**

**Influenza-like illness activity:**

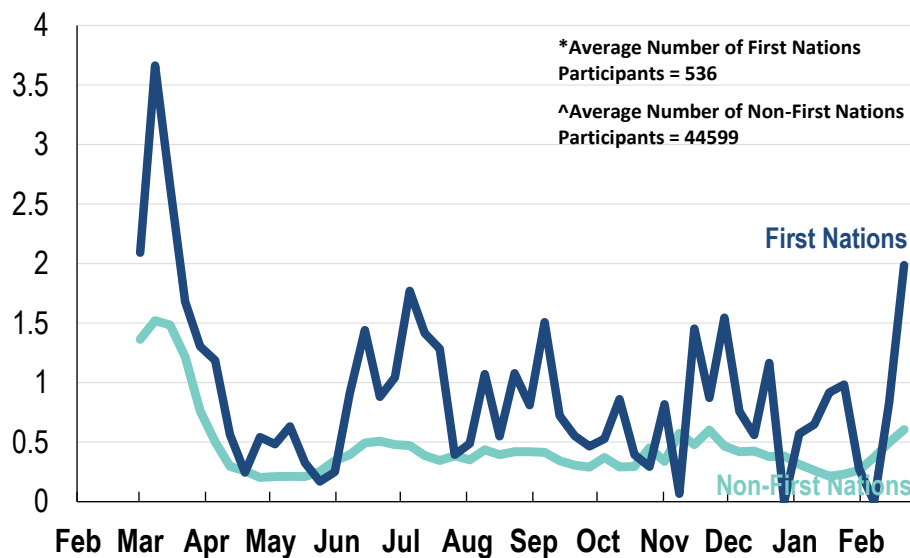
**Fever and cough: 0.7% this week (flu-like illness activity is historically low)**



\*5 year average is calculated using 2015, 2016, 2017, 2018 and 2019 data

^ Data are age standardised in this chart

**Influenza-like illness activity by Aboriginal and Torres Strait Islander status:**



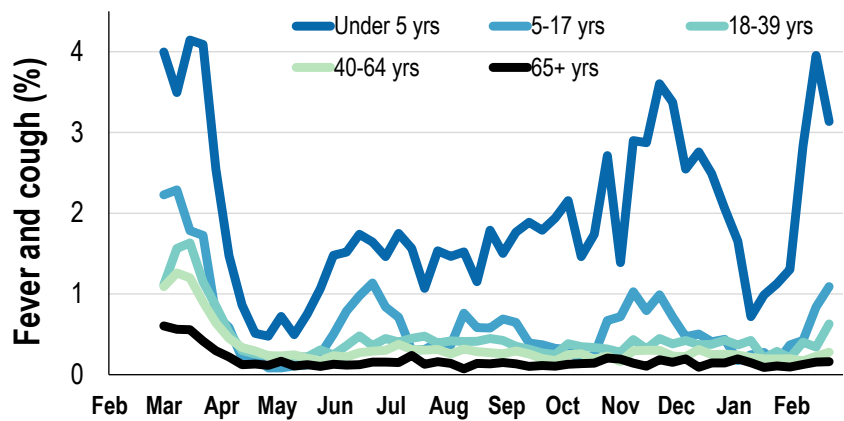
\* Data are age standardised in this chart

**Influenza-like illness severity:**  
**62.1% of participants with fever and cough sought medical advice this week**

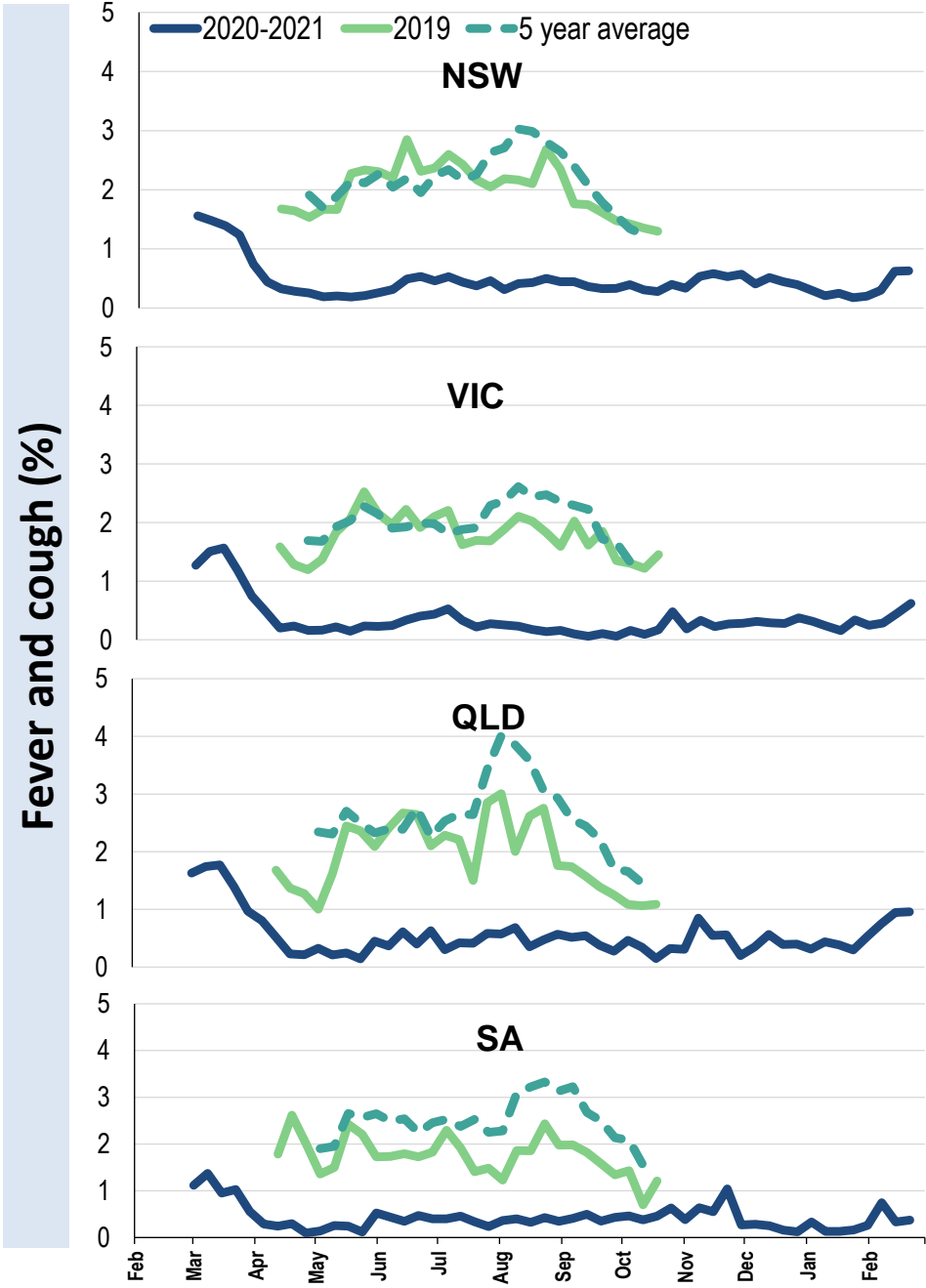
Influenza-like illness Severity	Week ending 21 February 2021 number (%)	Week ending 14 February 2021 number (%)
<b>Number of participants</b>	48467 (100%)	48834 (100%)
Fever & cough	203 (0.4%)	156 (0.3%)
Fever, cough & time-off normal duties	154 (0.3%)	121 (0.2%)
Fever, cough & 3 or more days off work/normal duties	96 (0.2%)	72 (0.1%)
<b>Number of participants with fever and cough</b>	203 (100%)	156 (100%)
*Sought medical advice for fever and cough	126 (62.1%)	102 (65.4%)
Admitted to hospital	4 (2%)	5 (3.2%)
Tested for influenza	39 (19.2%)	15 (9.6%)
Tested, result positive for influenza	2 (1%)	1 (0.6%)
Tested for coronavirus (COVID-19)	117 (57.6%)	89 (57.1%)
Tested, result positive for coronavirus (COVID-19)	0 (0%)	0 (0%)

\*Includes those who sought medical advice from a general practitioner, COVID-19 clinic, emergency department, or were admitted to hospital for fever & cough

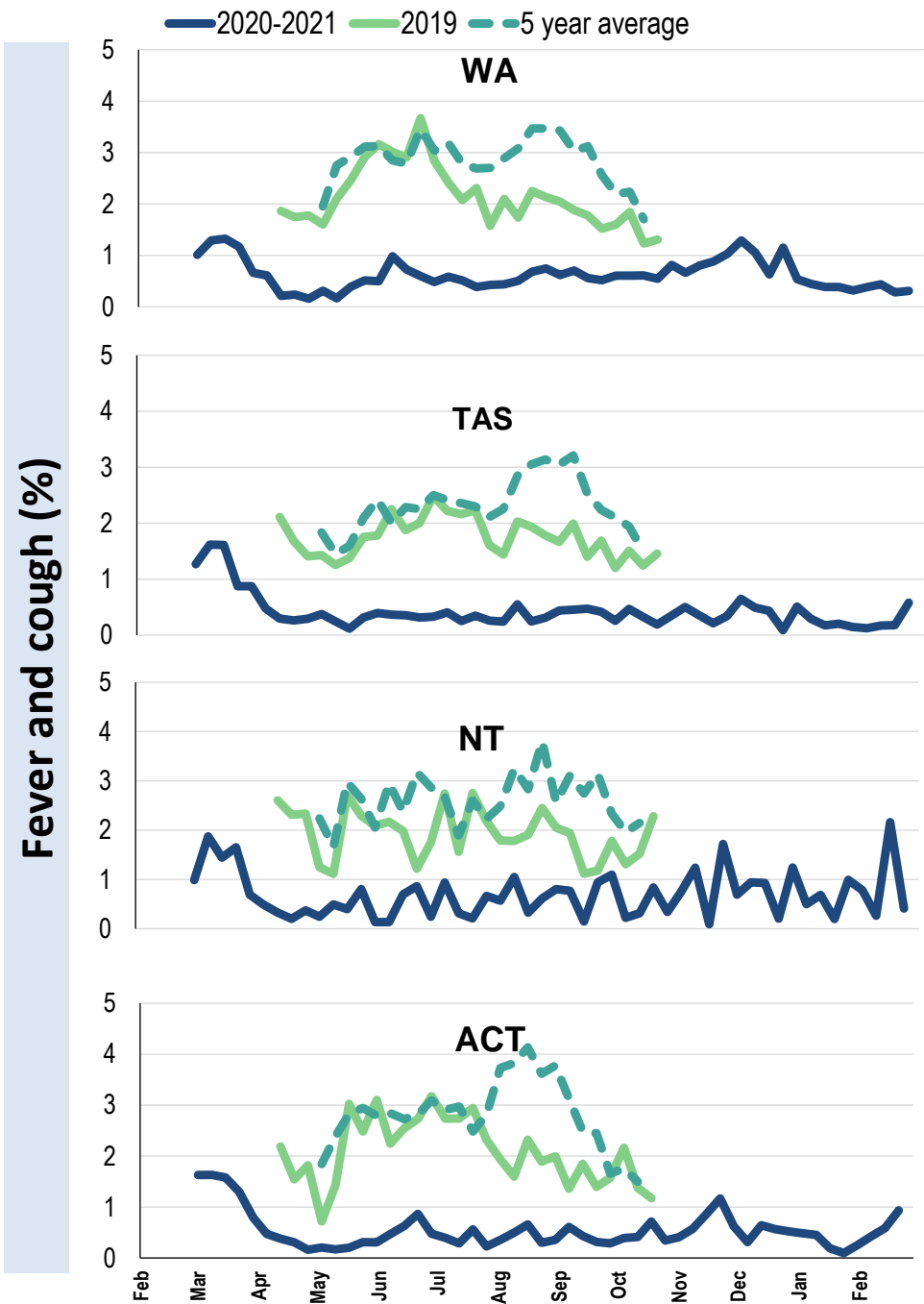
Influenza-like illness activity by age group (Australia):



Influenza-like illness activity by state/territory (age standardised):



Influenza-like illness activity by state/territory (age standardised):



Participation:  
48,467 participants (48,834 last week)

State	Participants	% Rate/100,000 population
NSW	17157	35.4% 217.3
VIC	9495	19.6% 149.3
QLD	5904	12.2% 119.3
SA	4299	8.9% 248.9
WA	4878	10.1% 188.6
TAS	3243	6.7% 621.3
NT	903	1.9% 366.9
ACT	2588	5.3% 627.2
AUS	48467	100.0% 196.2



FluTracking  
Tracking COVID-19