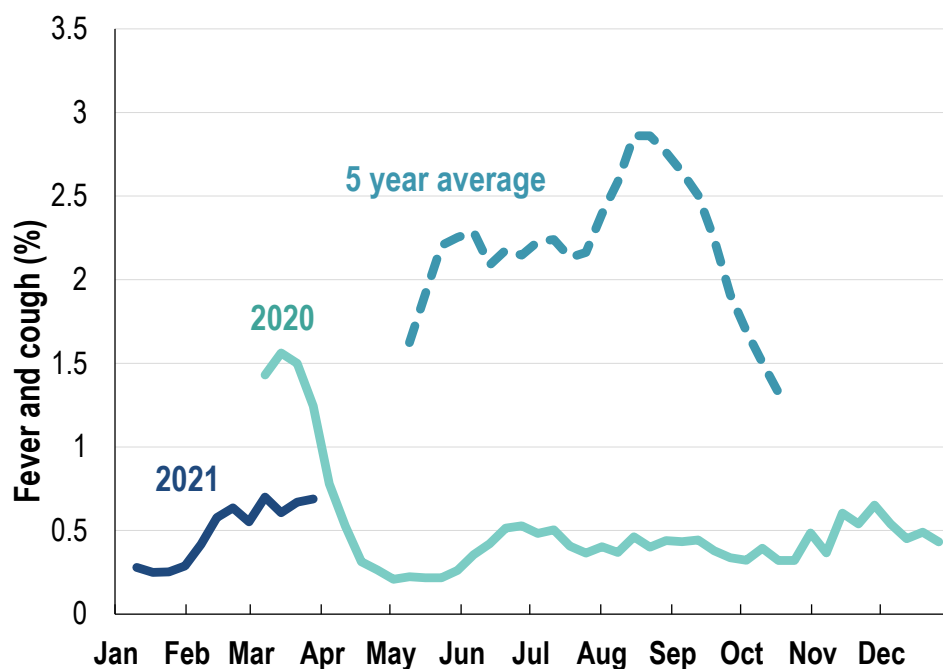


This week influenza-like illness activity is low 46,622 participants this week

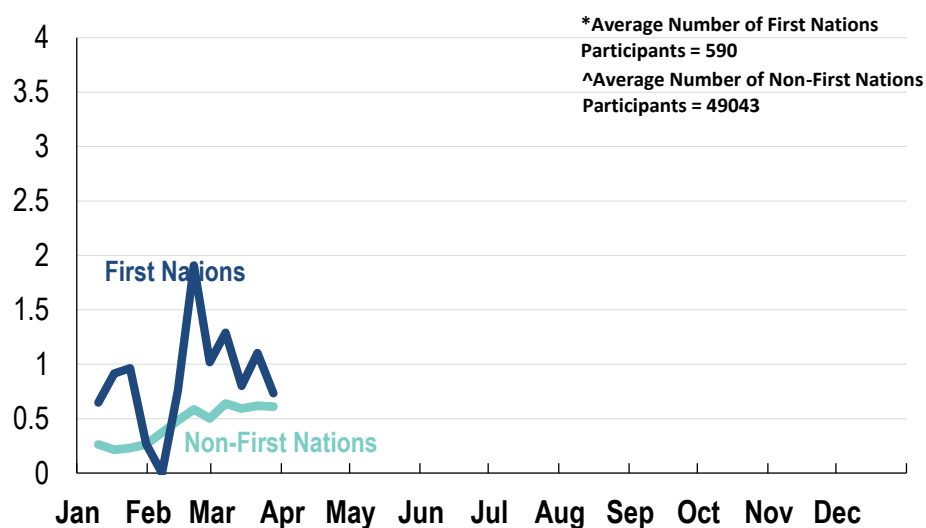
Influenza-like illness activity:

Fever and cough: 0.7% this week (flu-like illness activity is historically low)



*5 year average is calculated using 2015, 2016, 2017, 2018 and 2019 data
^ Data are age standardised in this chart

Influenza-like illness activity by Aboriginal and Torres Strait Islander status:



*Average Number of First Nations

Participants = 590

^Average Number of Non-First Nations

Participants = 49043

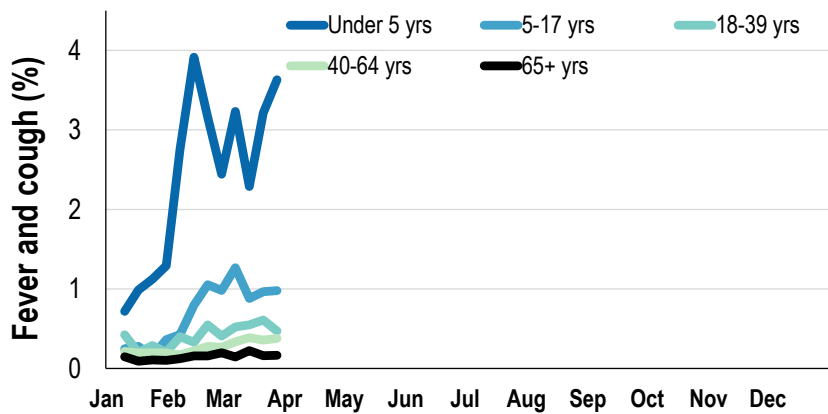
* Data are age standardised in this chart

Influenza-like illness severity:
51.2% of participants with fever and cough sought medical advice this week

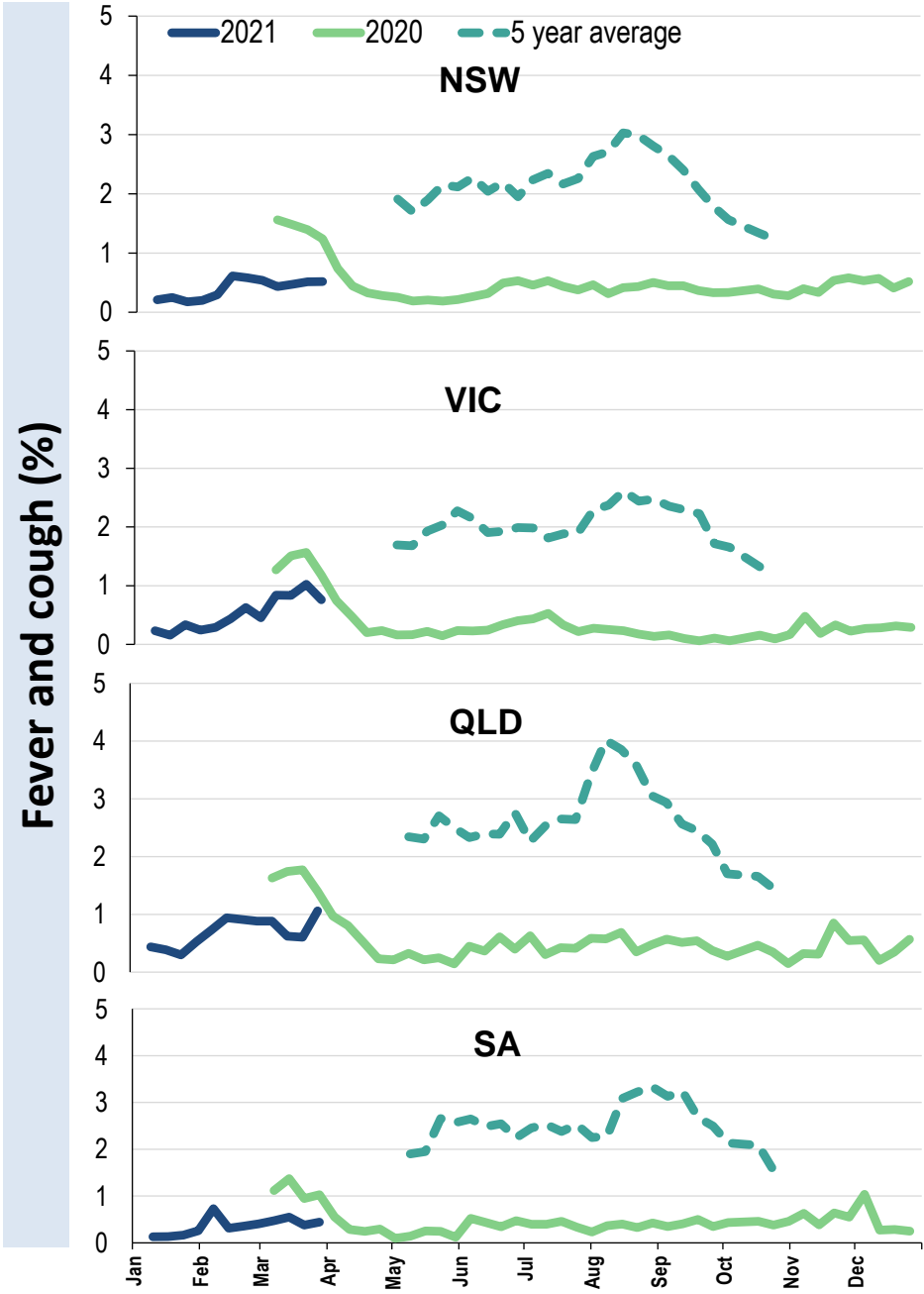
Influenza-like illness Severity	Week ending 28 March 2021 number (%)	Week ending 21 March 2021 number (%)
Number of participants	46622 (100%)	48240 (100%)
Fever & cough	207 (0.4%)	213 (0.4%)
Fever, cough & time-off normal duties	153 (0.3%)	161 (0.3%)
Fever, cough & 3 or more days off work/normal duties	88 (0.2%)	88 (0.2%)
Number of participants with fever and cough	207 (100%)	213 (100%)
*Sought medical advice for fever and cough	106 (51.2%)	123 (57.7%)
Admitted to hospital	5 (2.4%)	0 (0%)
Tested for influenza	27 (13%)	26 (12.2%)
Tested, result positive for influenza	2 (1%)	1 (0.5%)
Tested for coronavirus (COVID-19)	90 (43.5%)	109 (51.2%)
Tested, result positive for coronavirus (COVID-19)	0 (0%)	0 (0%)

*Includes those who sought medical advice from a general practitioner, COVID-19 clinic, emergency department, or were admitted to hospital for fever & cough

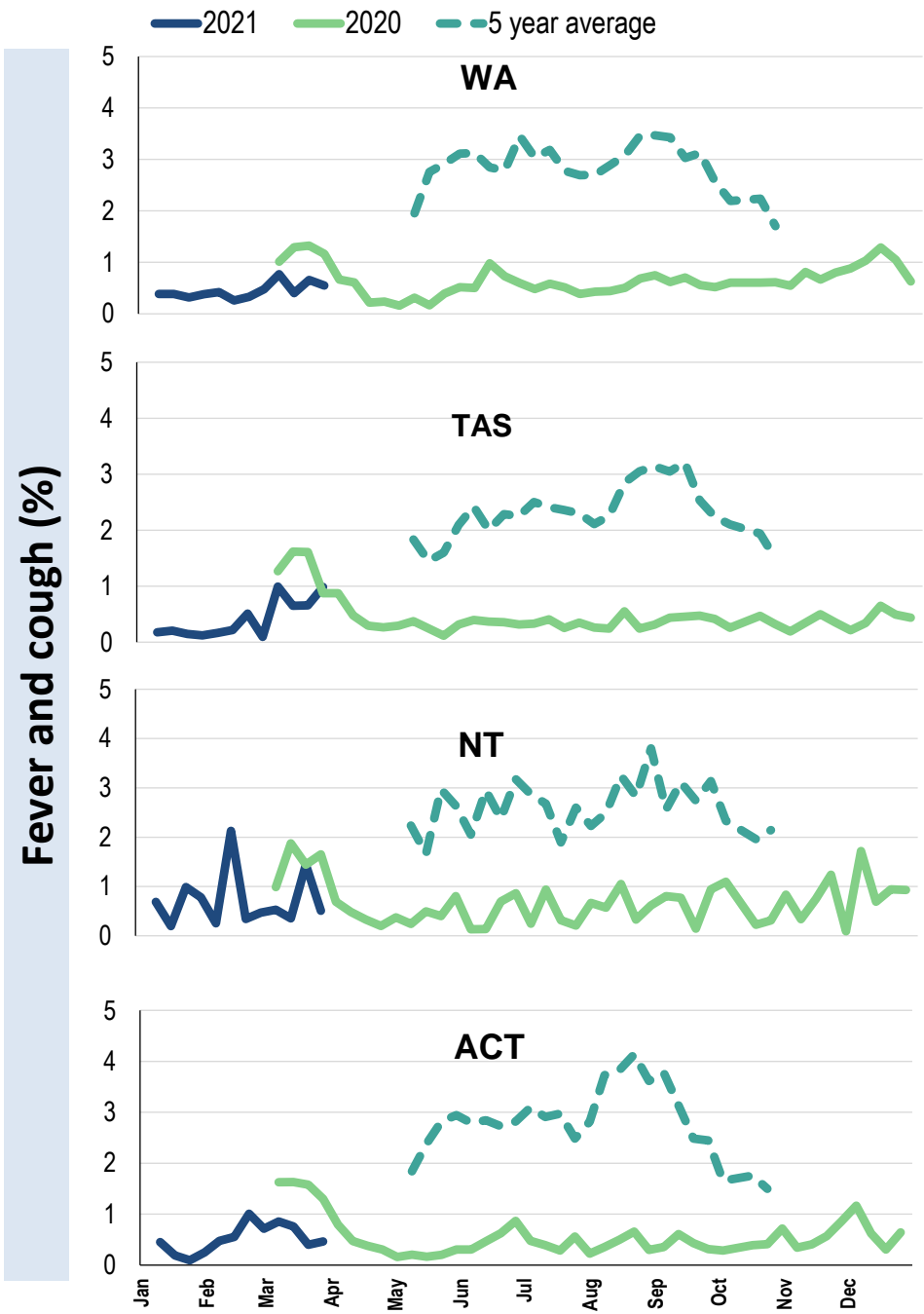
Influenza-like illness activity by age group (Australia):



Influenza-like illness activity by state/territory (age standardised):



Influenza-like illness activity by state/territory (age standardised):



Participation:

46,622 participants (48,240 last week)

State	Participants	% Rate/100,000 population
NSW	16598	35.6% 210.2
VIC	9260	19.9% 145.6
QLD	5866	12.6% 118.5
SA	4179	9.0% 242.0
WA	4371	9.4% 169.0
TAS	3172	6.8% 607.7
NT	875	1.9% 355.5
ACT	2301	4.9% 557.7
AUS	46622	100.0% 188.7

Vaccination rates:

Vaccinated participants:

	COVID-19 (%)	Influenza (%)
<5 years		0.1
5-17 years		1.1
18-64 years	10.3	3.3
65+ years	7.7	4.0
Working with patients	31.6	2.4
First Nations	6.7	1.9
Vaccinated overall (%)	8.4	3.2



FluTracking
Tracking COVID-19