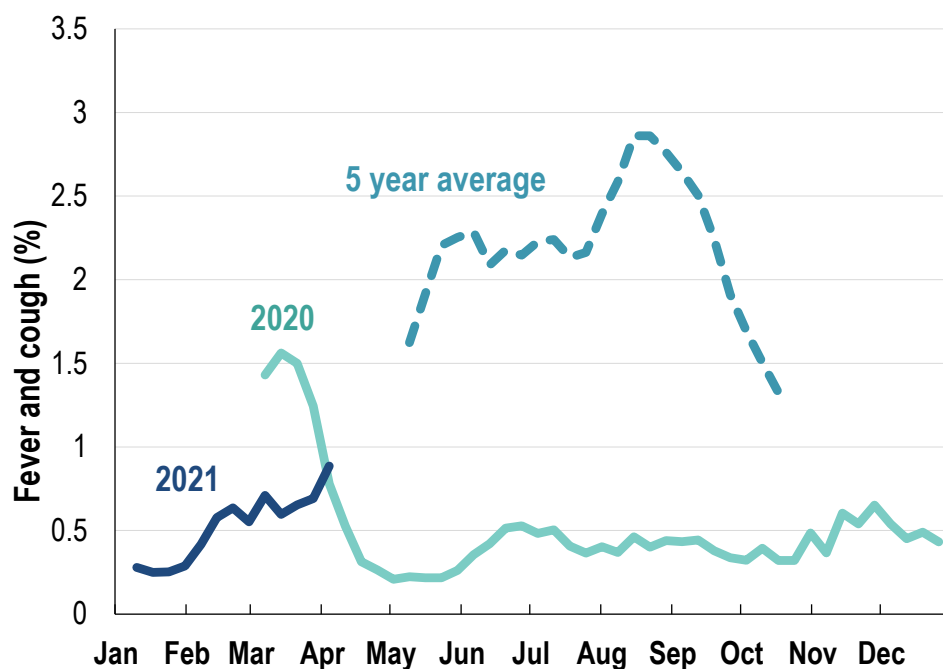


## This week influenza-like illness activity is low 54,014 participants this week

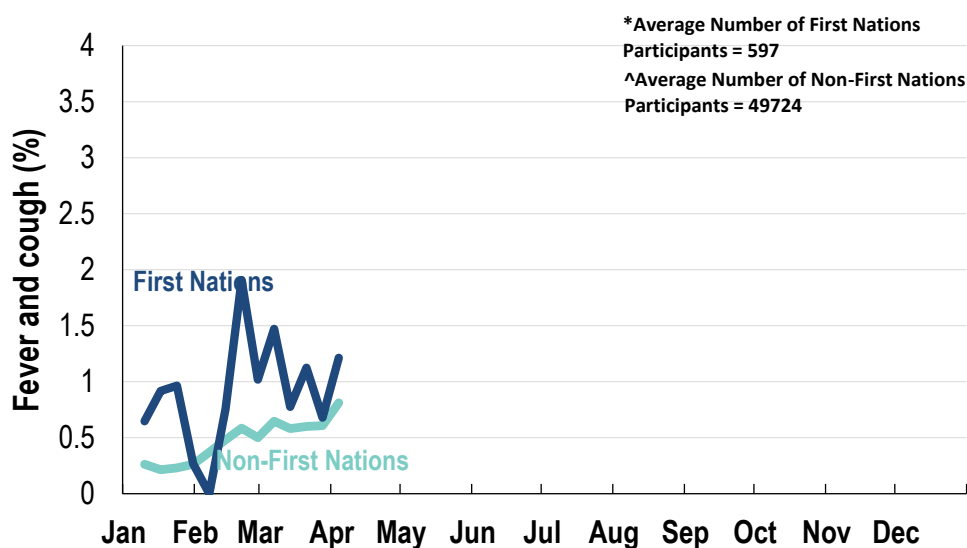
### Influenza-like illness activity:

*Fever and cough: 0.9% this week (flu-like illness activity is low)*



\*5 year average is calculated using 2015, 2016, 2017, 2018 and 2019 data  
^ Data are age standardised in this chart

### Influenza-like illness activity by Aboriginal and Torres Strait Islander status:



\*Average Number of First Nations

Participants = 597

^Average Number of Non-First Nations

Participants = 49724

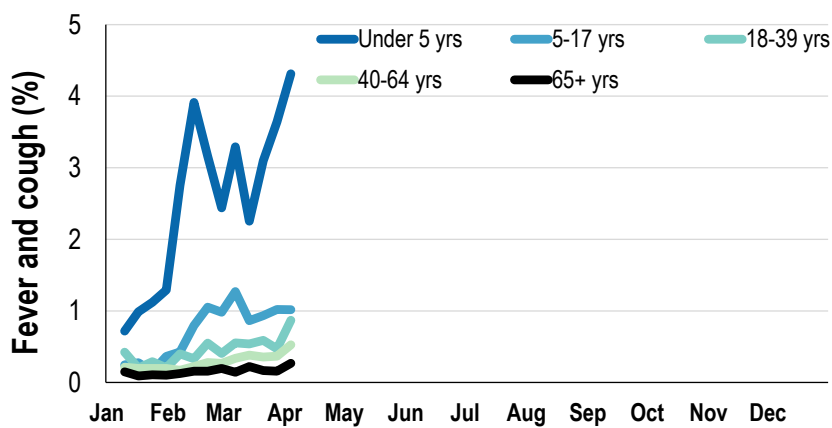
\* Data are age standardised in this chart

**Influenza-like illness severity:**  
**45.9% of participants with fever and cough sought medical advice this week**

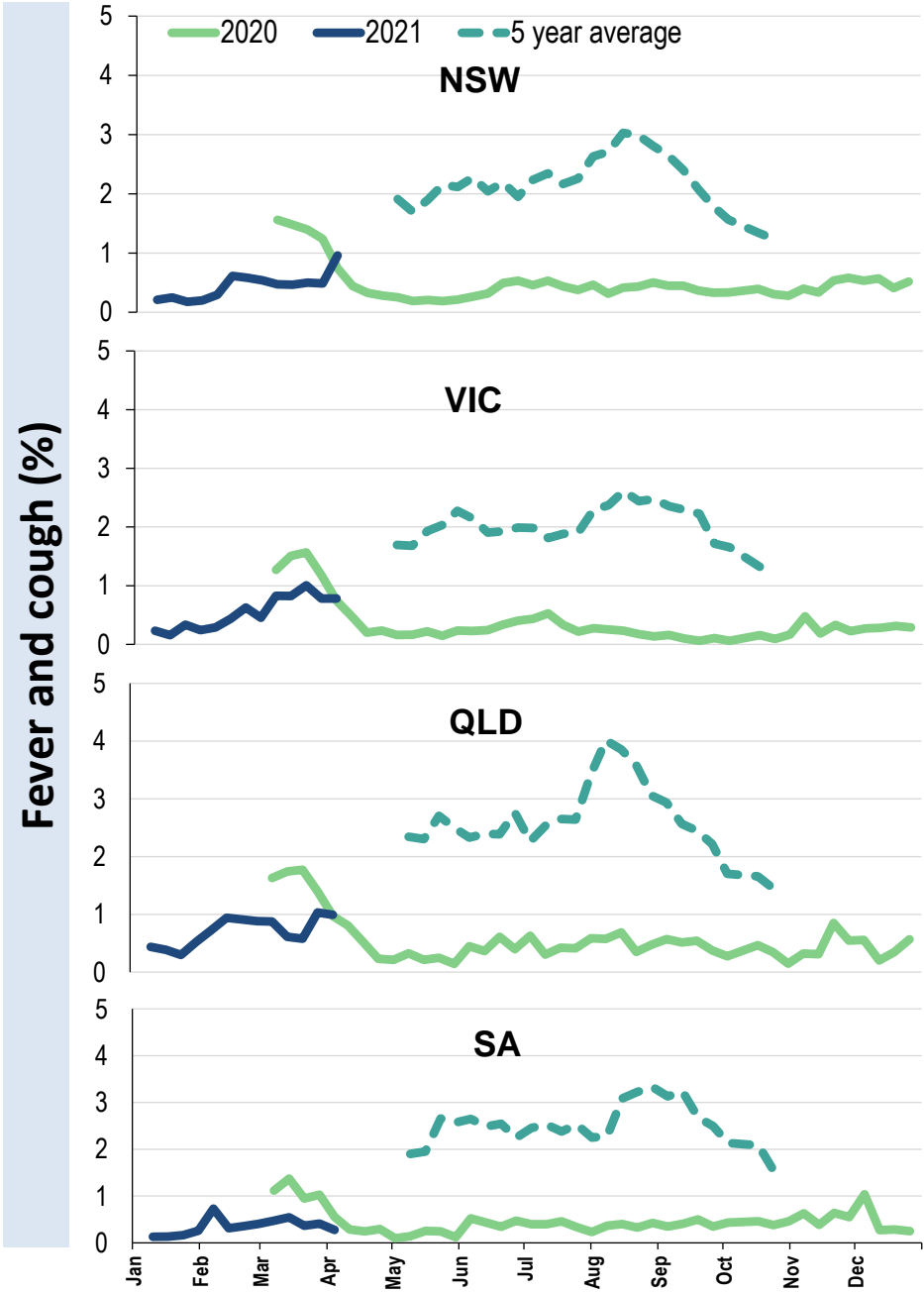
Influenza-like illness Severity	Week ending 04 April 2021 number (%)	Week ending 28 March 2021 number (%)
<b>Number of participants</b>	54014 (100%)	46622 (100%)
Fever & cough	331 (0.6%)	206 (0.4%)
Fever, cough & time-off normal duties	192 (0.4%)	156 (0.3%)
Fever, cough & 3 or more days off work/normal duties	87 (0.2%)	97 (0.2%)
<b>Number of participants with fever and cough</b>	331 (100%)	206 (100%)
*Sought medical advice for fever and cough	152 (45.9%)	115 (55.8%)
Admitted to hospital	5 (1.5%)	5 (2.4%)
Tested for influenza	27 (8.2%)	29 (14.1%)
Tested, result positive for influenza	1 (0.3%)	2 (1%)
Tested for coronavirus (COVID-19)	140 (42.3%)	101 (49%)
Tested, result positive for coronavirus (COVID-19)	1 (0.3%)	0 (0%)

\*Includes those who sought medical advice from a general practitioner, COVID-19 clinic, emergency department, or were admitted to hospital for fever & cough

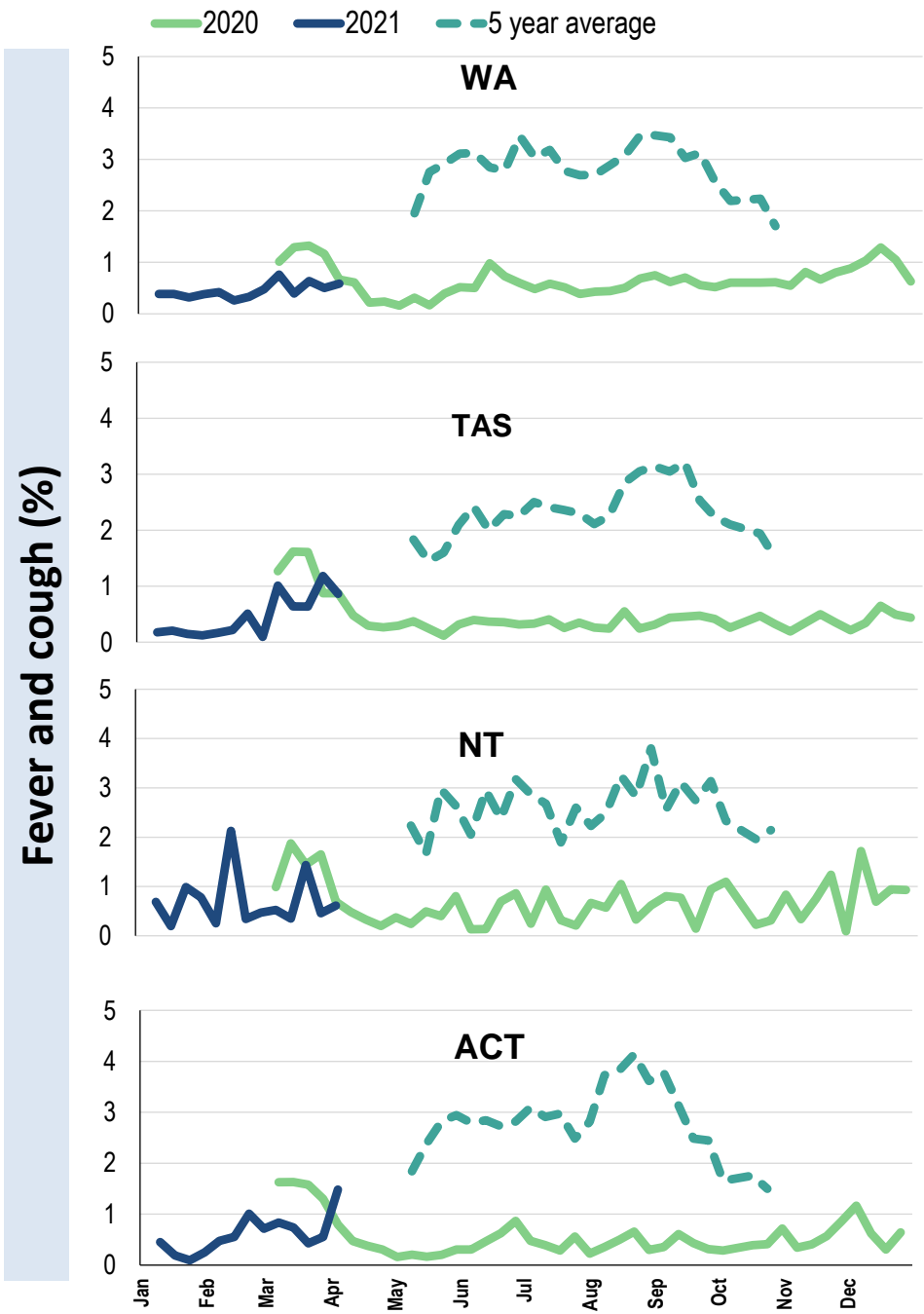
Influenza-like illness activity by age group (Australia):



Influenza-like illness activity by state/territory (age standardised):



Influenza-like illness activity by state/territory (age standardised):



## Participation:

**54,014 participants (46,622 last week)**

State	Participants	% Rate/100,000 population
NSW	19181	35.5% <b>242.9</b>
VIC	10970	20.3% <b>172.5</b>
QLD	7054	13.1% <b>142.5</b>
SA	4788	8.9% <b>277.3</b>
WA	5022	9.3% <b>194.1</b>
TAS	3253	6.0% <b>623.2</b>
NT	913	1.7% <b>371.0</b>
ACT	2833	5.2% <b>686.6</b>
AUS	54014	100.0% <b>218.7</b>

## Vaccination rates:

### Vaccinated participants:

	COVID-19 (%)	Influenza (%)
<5 years		0.5
5-17 years		1.6
18-64 years	13.4	5.8
65+ years	13.2	8.1
Working with patients	40.5	4.3
First Nations	10.2	3.1
<b>Vaccinated overall (%)</b>	<b>11.9</b>	<b>6.0</b>



**FluTracking**  
Tracking COVID-19