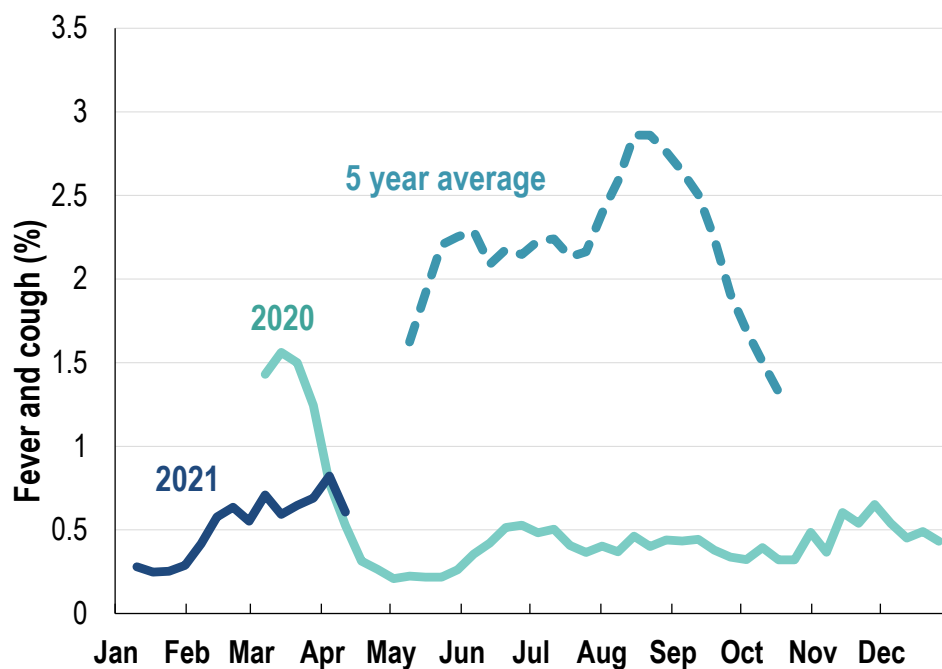


## This week influenza-like illness activity is low 54,706 participants this week

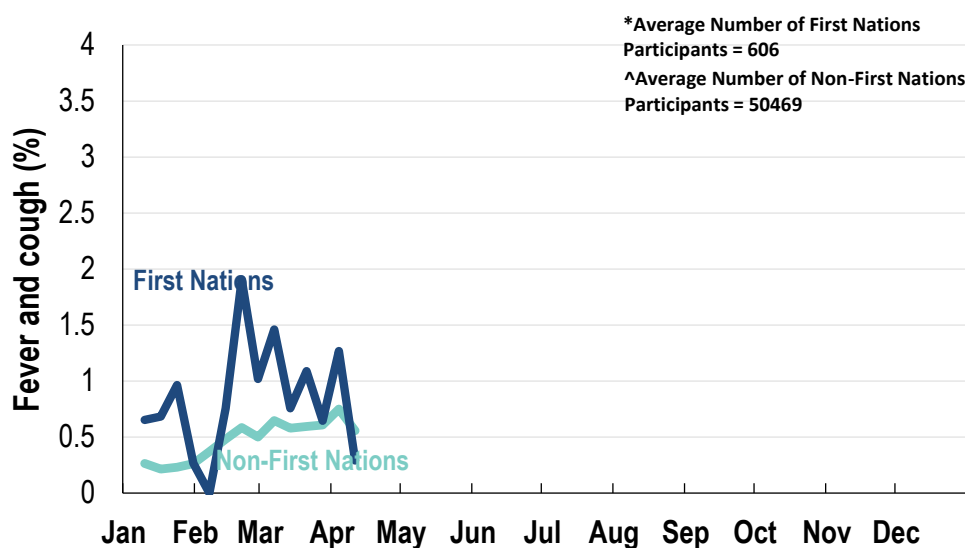
### Influenza-like illness activity:

*Fever and cough: 0.6% this week (flu-like illness activity is low)*



\*5 year average is calculated using 2015, 2016, 2017, 2018 and 2019 data  
^ Data are age standardised in this chart

### Influenza-like illness activity by Aboriginal and Torres Strait Islander status:



\*Average Number of First Nations  
Participants = 606

^Average Number of Non-First Nations  
Participants = 50469

\* Data are age standardised in this chart

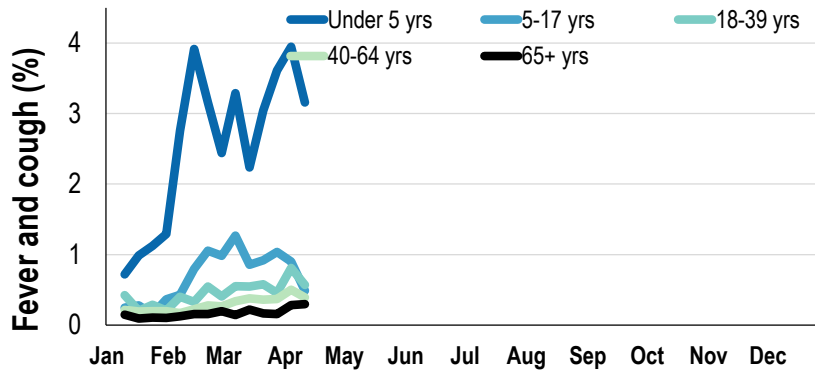
**Influenza-like illness severity:**
*52.4% of participants with fever and cough sought medical advice this week*

Influenza-like illness Severity	Week ending 11 April 2021 number (%)	Week ending 04 April 2021 number (%)
<b>Number of participants</b>	54706 (100%)	54014 (100%)
Fever & cough	246 (0.4%)	331 (0.6%)
Fever, cough & time-off normal duties	161 (0.3%)	199 (0.4%)
Fever, cough & 3 or more days off work/normal duties	92 (0.2%)	96 (0.2%)
<b>Number of participants with fever and cough</b>	246 (100%)	331 (100%)
*Sought medical advice for fever and cough	129 (52.4%)	166 (50.2%)
Admitted to hospital	4 (1.6%)	6 (1.8%)
Tested for influenza	21 (8.5%)	28 (8.5%)
Tested, result positive for influenza	3 (1.2%)	1 (0.3%)
Tested for coronavirus (COVID-19)	111 (45.1%)	153 (46.2%)
Tested, result positive for coronavirus (COVID-19)	1 (0.4%)	1 (0.3%)

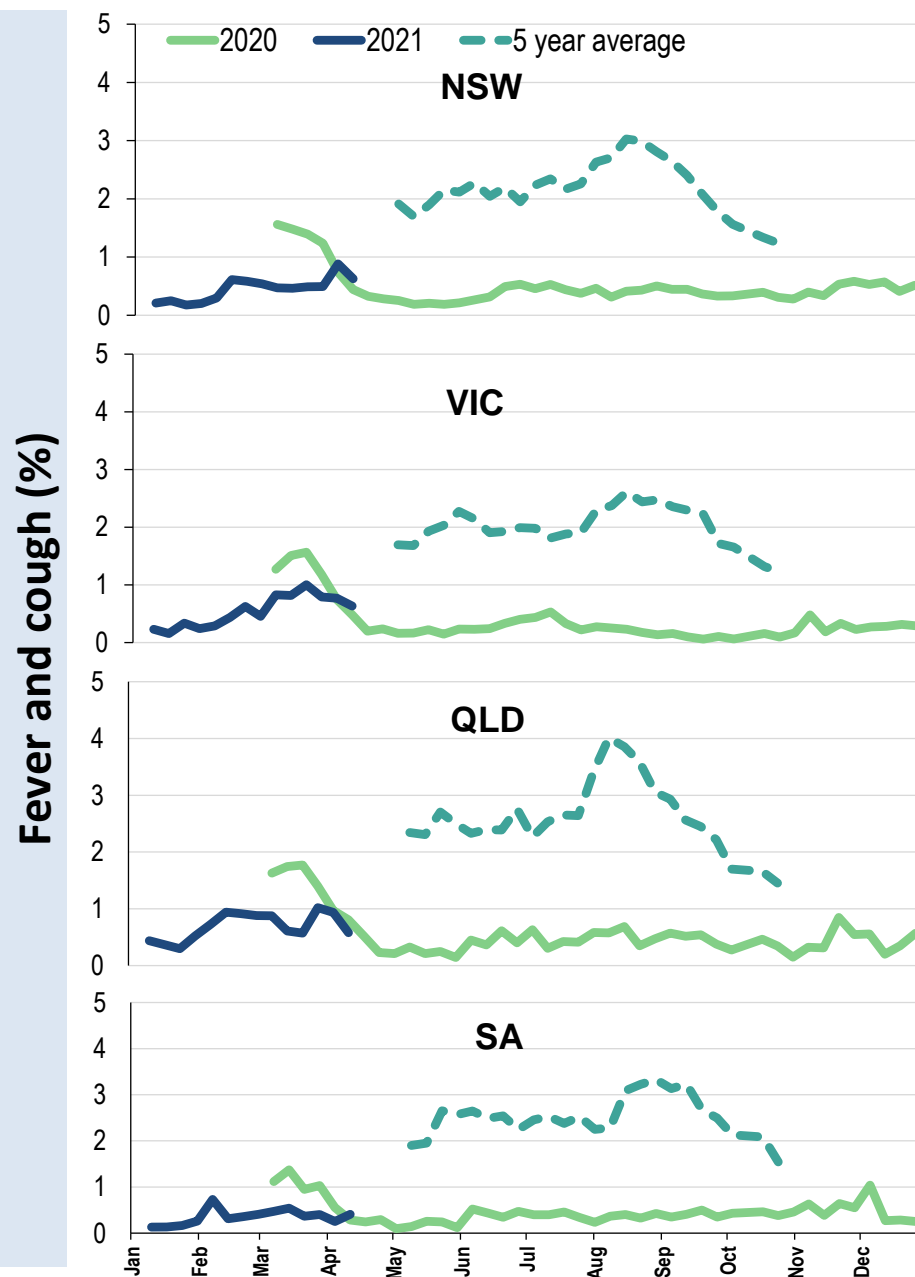
\*Includes those who sought medical advice from a general practitioner, COVID-19 clinic, emergency department, or were admitted to hospital for fever & cough



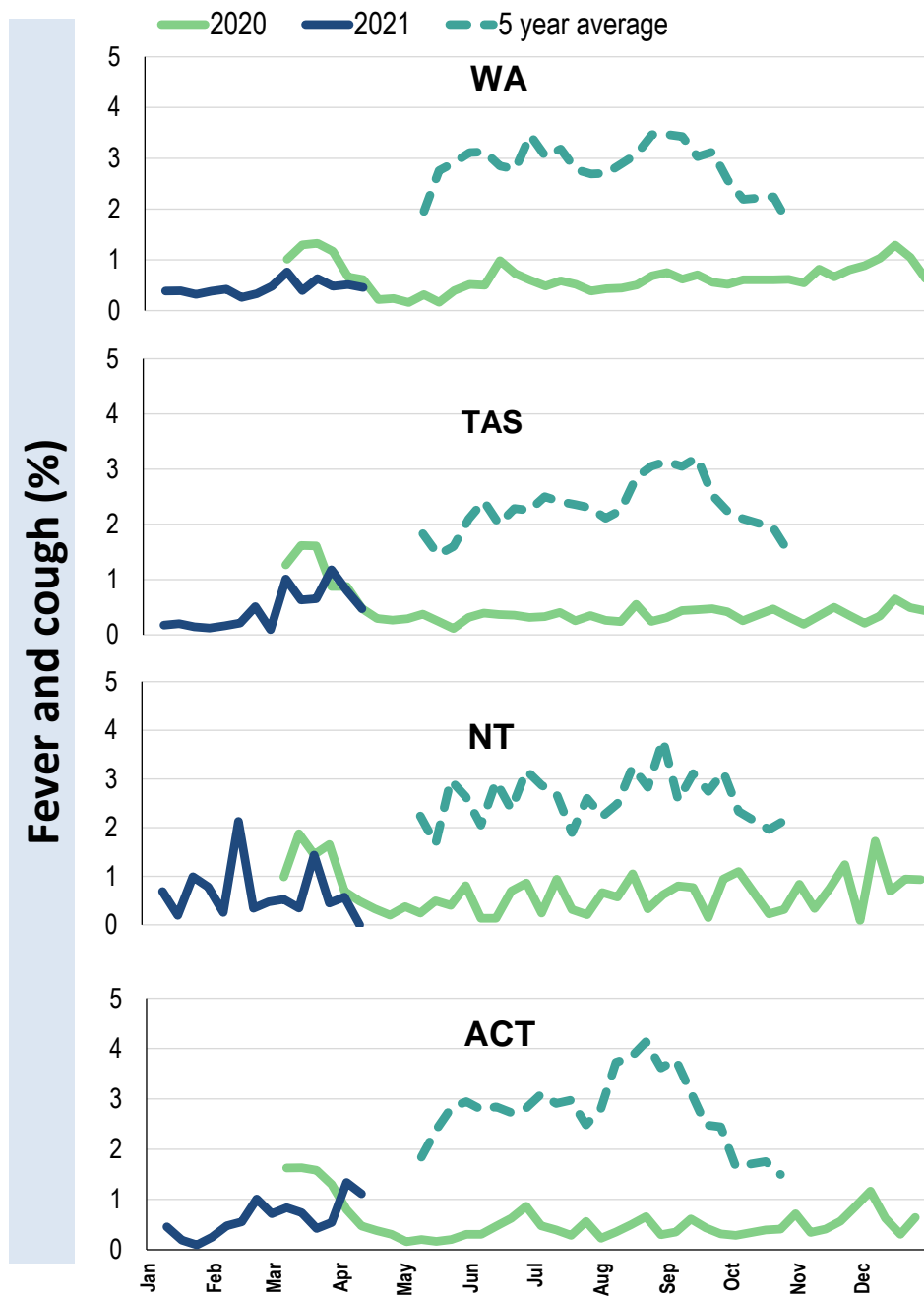
**Influenza-like illness activity by age group (Australia):**



**Influenza-like illness activity by state/territory (age standardised):**



**Influenza-like illness activity by state/territory (age standardised):**



**Participation:**
**54,706 participants (54,014 last week)**

State	Participants	%	Rate/100,000 population
NSW	19248	35.2%	<b>243.8</b>
VIC	11046	20.2%	<b>173.7</b>
QLD	7079	12.9%	<b>143.0</b>
SA	4794	8.8%	<b>277.6</b>
WA	5171	9.5%	<b>199.9</b>
TAS	3578	6.5%	<b>685.4</b>
NT	896	1.6%	<b>364.1</b>
ACT	2894	5.3%	<b>701.4</b>
AUS	54706	100.0%	<b>221.5</b>

**Vaccination rates:**
**Vaccinated participants:**

	COVID-19 (%)	Influenza (%)
<5 years		1.4
5-17 years		3.0
18-64 years	15.9	9.3
65+ years	20.4	14.8
Working with patients	46.7	6.6
First Nations	16.3	4.6
<b>Vaccinated overall (%)</b>	<b>15.6</b>	<b>10.2</b>

