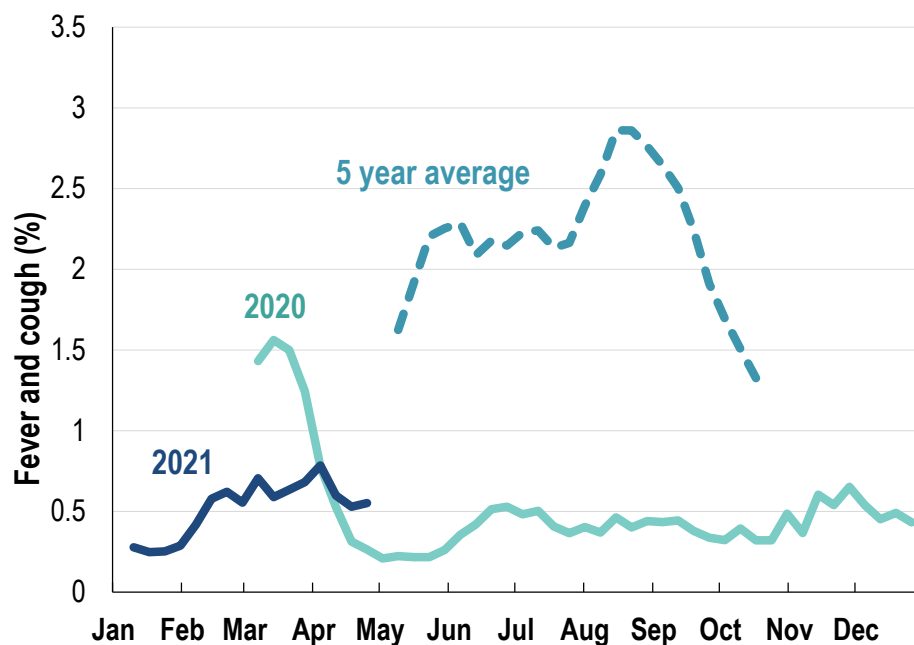


## This week influenza-like illness activity is low 57,633 participants this week

### Influenza-like illness activity:

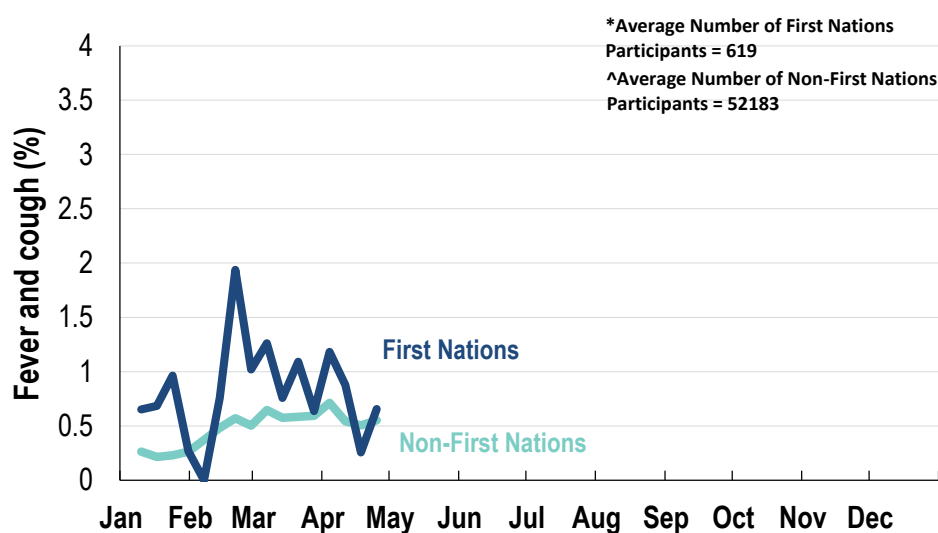
**Fever and cough: 0.6% this week (flu-like illness activity is low)**



\*5 year average is calculated using 2015, 2016, 2017, 2018 and 2019 data

^ Data are age standardised in this chart

### Influenza-like illness activity by Aboriginal and Torres Strait Islander status:



\*Average Number of First Nations

Participants = 619

^Average Number of Non-First Nations

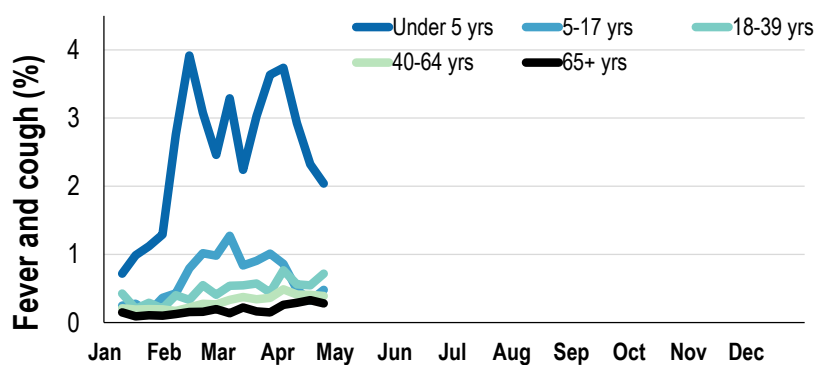
Participants = 52183

\* Data are age standardised in this chart

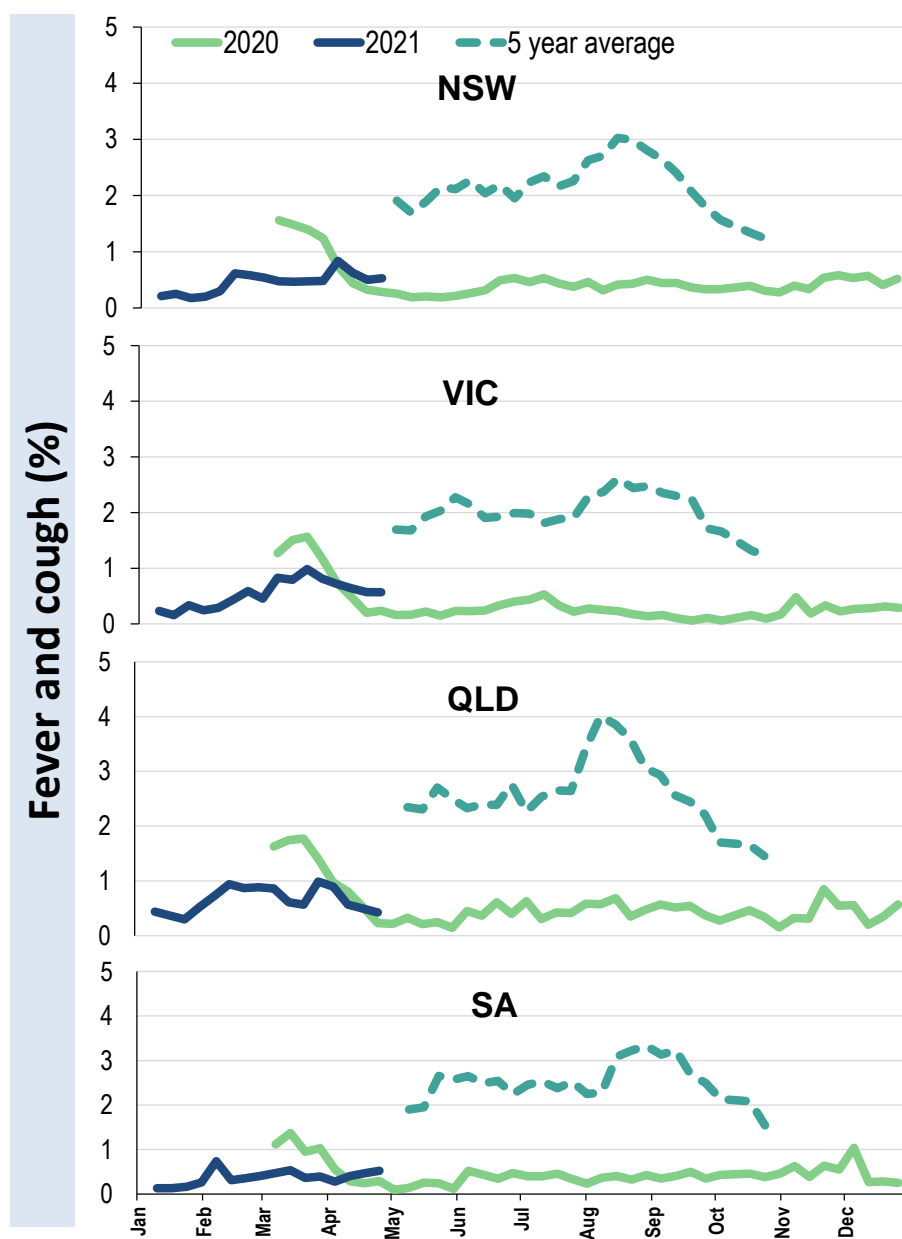
<b>Influenza-like illness severity:</b> <i>51% of participants with fever and cough sought medical advice this week</i>		
<b>Influenza-like illness Severity</b>	<b>Week ending 25 April 2021 number (%)</b>	<b>Week ending 18 April 2021 number (%)</b>
<b>Number of participants</b>	57633 (100%)	57134 (100%)
Fever & cough	255 (0.4%)	252 (0.4%)
Fever, cough & time-off normal duties	151 (0.3%)	164 (0.3%)
Fever, cough & 3 or more days off work/normal duties	82 (0.1%)	105 (0.2%)
<b>Number of participants with fever and cough</b>	255 (100%)	252 (100%)
*Sought medical advice for fever and cough	130 (51%)	142 (56.3%)
Admitted to hospital	3 (1.2%)	5 (2%)
Tested for influenza	26 (10.2%)	24 (9.5%)
Tested, result positive for influenza	1 (0.4%)	1 (0.4%)
Tested for coronavirus (COVID-19)	93 (36.5%)	116 (46%)
Tested, result positive for coronavirus (COVID-19)	1 (0.4%)	0 (0%)

\*Includes those who sought medical advice from a general practitioner, COVID-19 clinic, emergency department, or were admitted to hospital for fever & cough

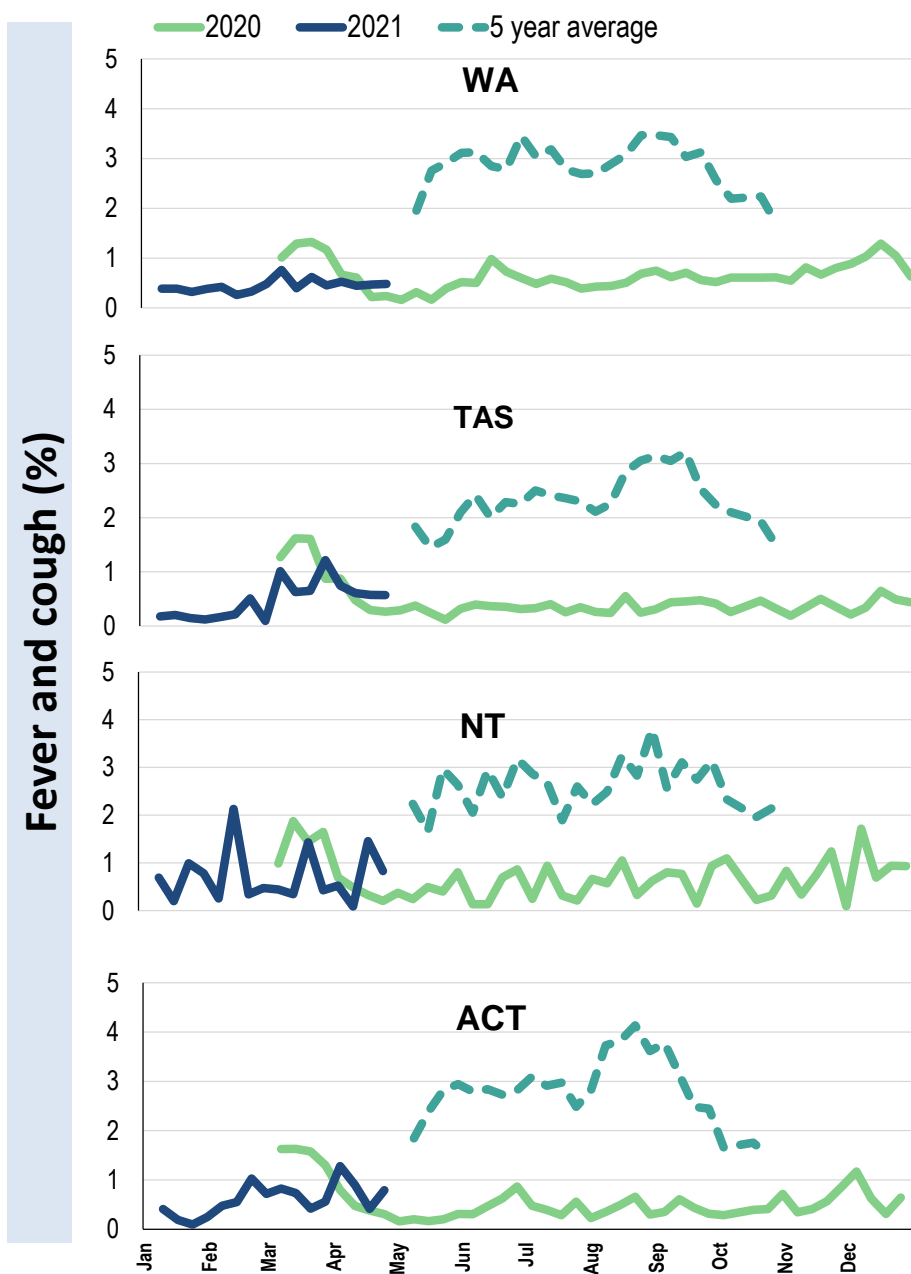
**Influenza-like illness activity by age group (Australia):**



**Influenza-like illness activity by state/territory (age standardised):**



**Influenza-like illness activity by state/territory (age standardised):**

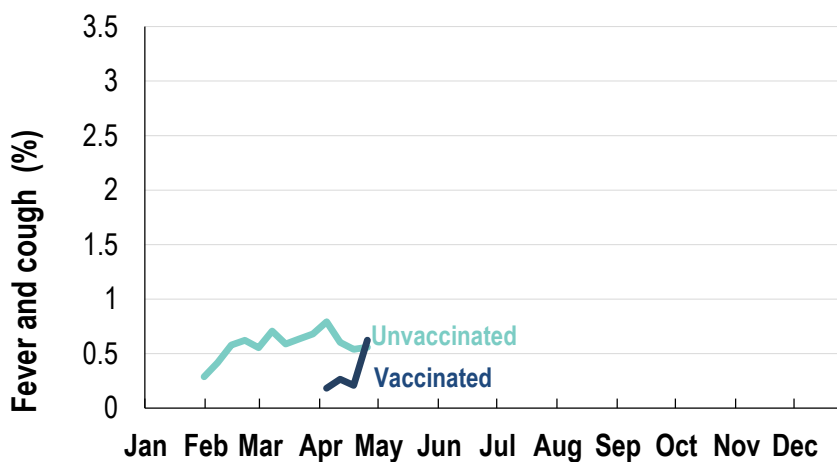


**Participation:**
**57,633 participants (57,134 last week)**

State	Participants	% Rate/100,000 population
NSW	20164	35.0% <b>255.4</b>
VIC	11660	20.2% <b>183.4</b>
QLD	7103	12.3% <b>143.5</b>
SA	5028	8.7% <b>291.2</b>
WA	5821	10.1% <b>225.0</b>
TAS	3810	6.6% <b>729.9</b>
NT	938	1.6% <b>381.1</b>
ACT	3109	5.4% <b>753.5</b>
AUS	57633	100.0% <b>233.3</b>

**Vaccination rates:**
**Vaccinated participants:**

	COVID-19 (%)	Influenza (%)
<5 years		7.0
5-17 years		8.7
18-64 years	20.3	22.3
65+ years	35.2	35.6
Working with patients	56.0	18.2
First Nations	19.5	14.9
<b>Vaccinated overall (%)</b>	<b>22.5</b>	<b>24.8</b>

**Influenza-like illness activity by influenza vaccination status:**


\* Data are age standardised in this chart

^2021 Influenza vaccination data not available until 04/04/21 due to low counts

