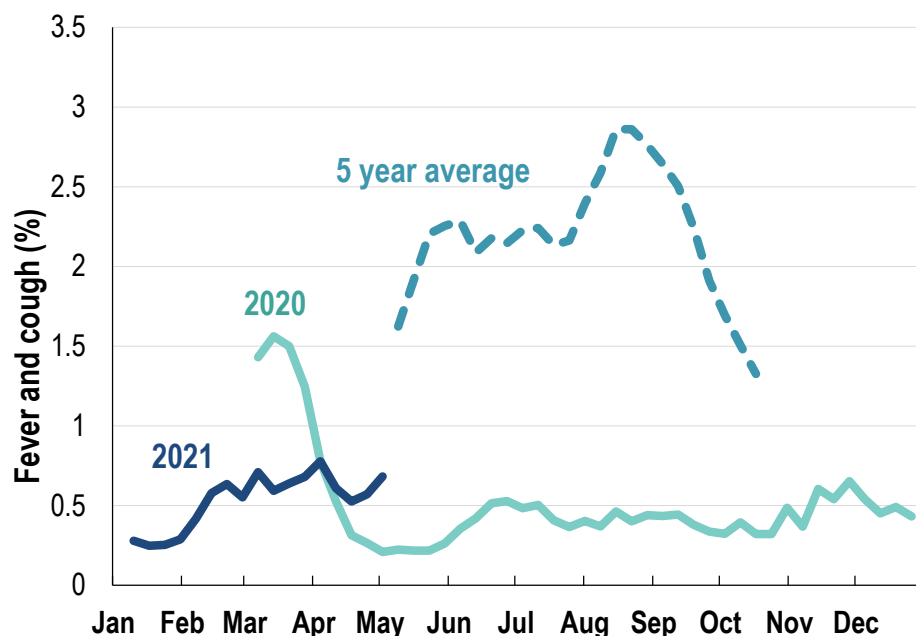


This week influenza-like illness activity is low 59,166 participants this week

Influenza-like illness activity*:

*Influenza-like illness activity is defined as fever & cough for this report

0.7% this week: flu-like illness activity is low

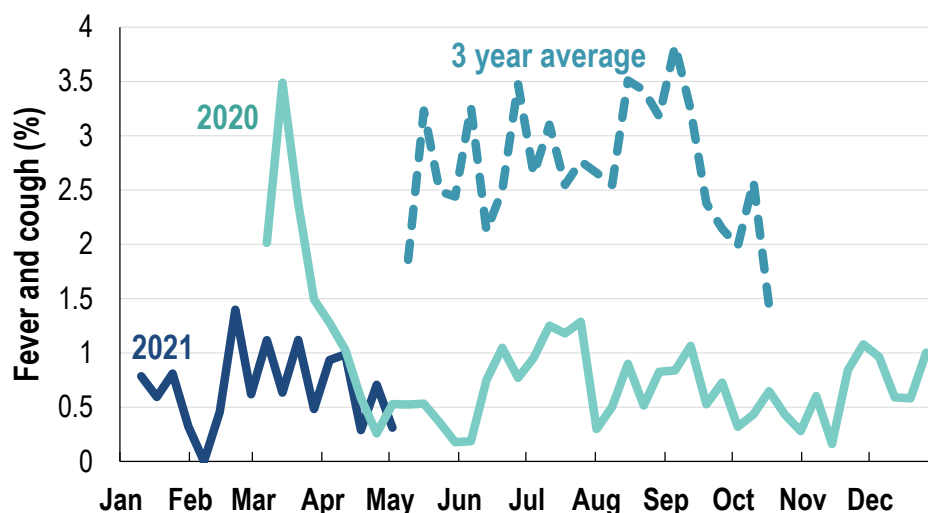


*5 year average is calculated using 2015, 2016, 2017, 2018 and 2019 data

*Data are age standardised in this chart

Influenza-like illness activity among Aboriginal and Torres Strait Islander participants

0.3% this week: flu-like illness activity is low



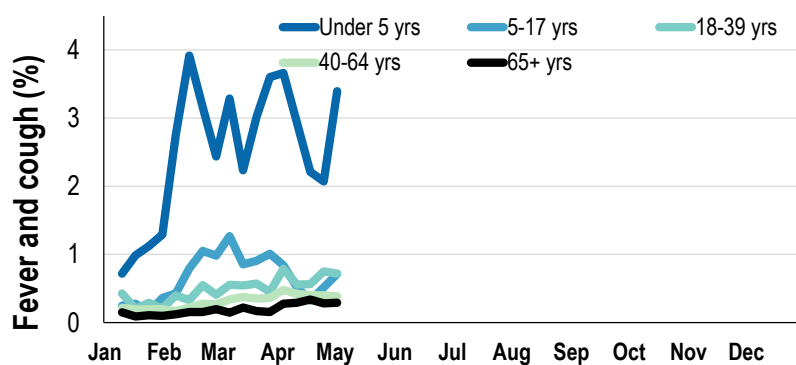
*Average Number of Aboriginal and Torres Strait Islander Participants = 633

*3 year average is calculated using 2017, 2018 and 2019 data

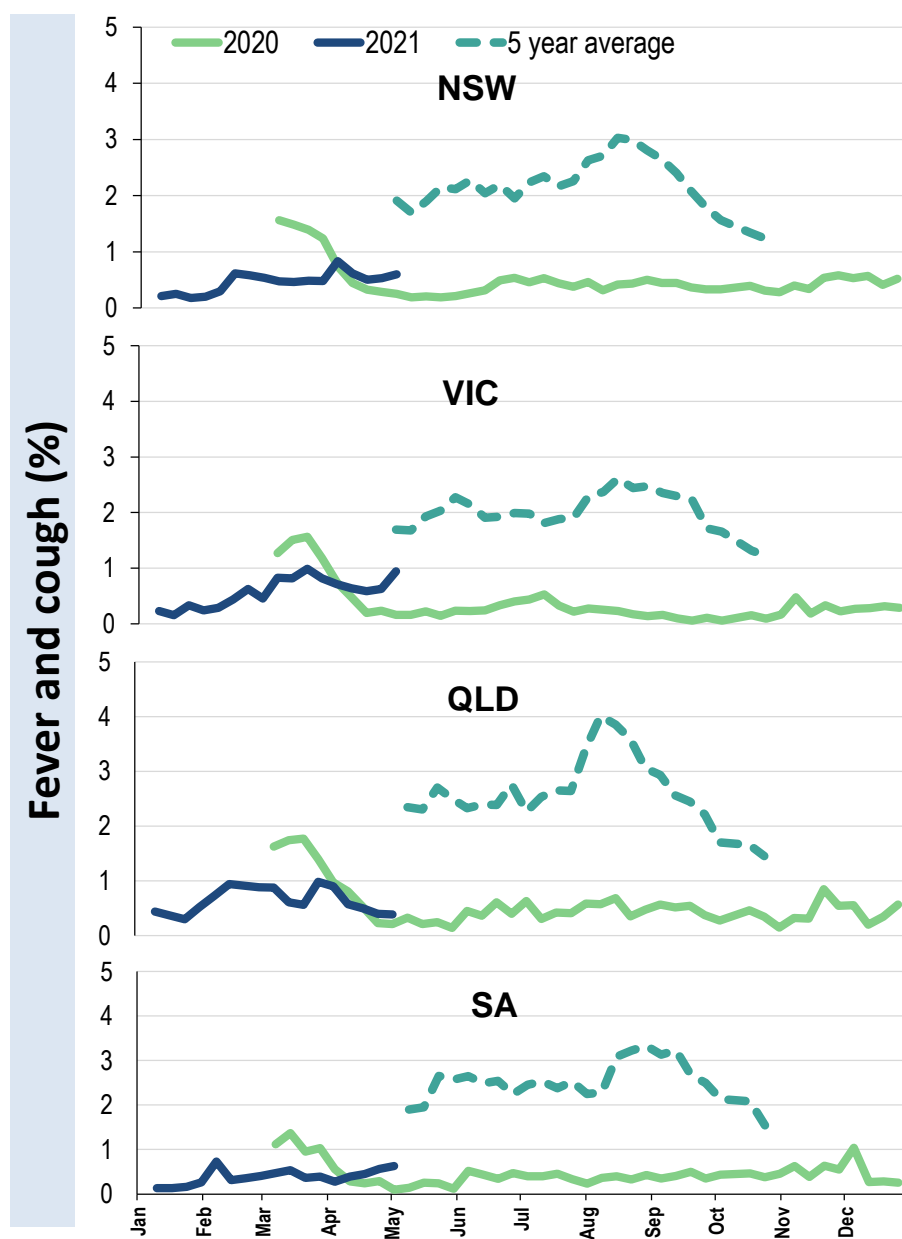
Influenza-like illness severity: <i>46.5% of participants with fever and cough sought medical advice this week</i>		
Influenza-like illness Severity	Week ending 02 May 2021 number (%)	Week ending 25 April 2021 number (%)
Number of participants	59166 (100%)	57670 (100%)
Fever & cough	288 (0.5%)	255 (0.4%)
Fever, cough & time-off normal duties	189 (0.3%)	161 (0.3%)
Fever, cough & 3 or more days off work/normal duties	94 (0.2%)	96 (0.2%)
Number of participants with fever and cough	288 (100%)	255 (100%)
*Sought medical advice for fever and cough	134 (46.5%)	137 (53.7%)
Admitted to hospital	4 (1.4%)	3 (1.2%)
Tested for influenza	22 (7.6%)	29 (11.4%)
Tested, result positive for influenza	2 (0.7%)	1 (0.4%)
Tested for coronavirus (COVID- 19)	101 (35.1%)	108 (42.4%)
Tested, result positive for coronavirus (COVID-19)	0 (0%)	1 (0.4%)

*Includes those who sought medical advice from a general practitioner, COVID-19 clinic, emergency department, or were admitted to hospital for fever & cough

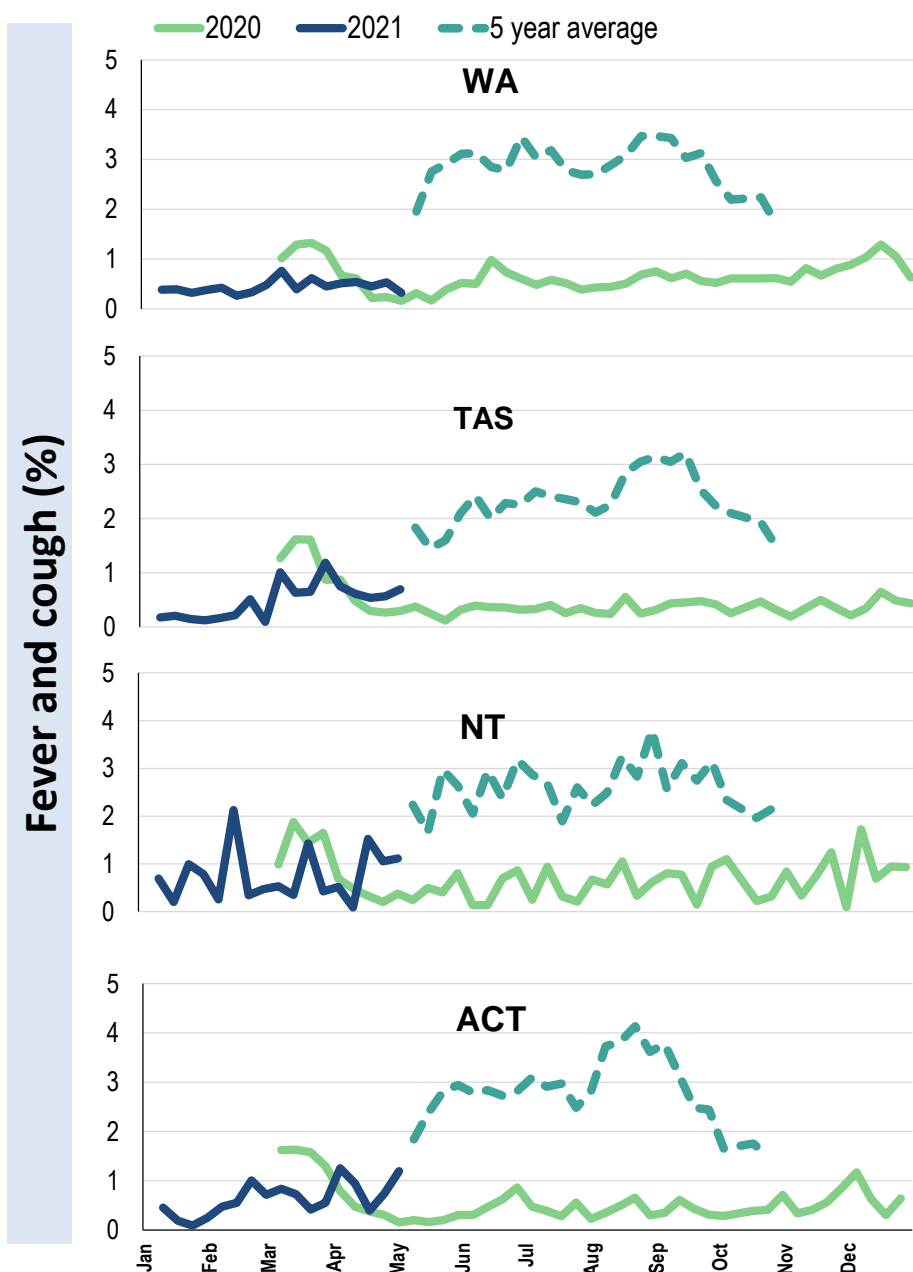
Influenza-like illness activity by age group (Australia):



Influenza-like illness activity by state/territory (age standardised):



Influenza-like illness activity by state/territory (age standardised):

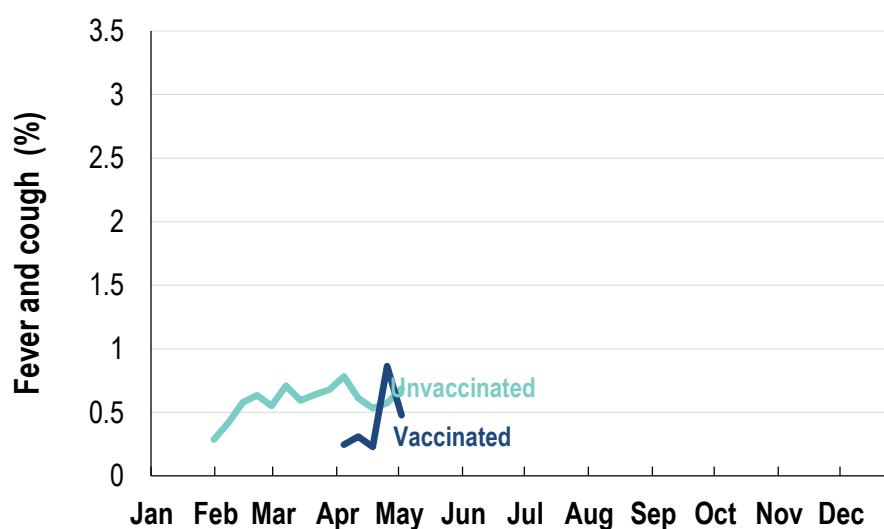


Participation:
59,166 participants (57,670 last week)

State	Participants	% Rate/100,000 population
NSW	20729	35.0% 262.5
VIC	11846	20.0% 186.3
QLD	7394	12.5% 149.4
SA	5212	8.8% 301.8
WA	5895	10.0% 227.9
TAS	3873	6.5% 742.0
NT	970	1.6% 394.1
ACT	3247	5.5% 787.0
AUS	59166	100.0% 239.5

Vaccination rates:
Vaccinated participants:

	COVID-19 (%)	Influenza (%)
<5 years		10.1
5-17 years		11.6
18-64 years	23.0	29.6
65+ years	41.7	46.6
Working with patients	61.0	26.5
First Nations	21.8	23.2
Vaccinated overall (%)	26.2	32.7



* Data are age standardised in this chart

^2021 Influenza vaccination data not available until 04/04/21 due to low counts

