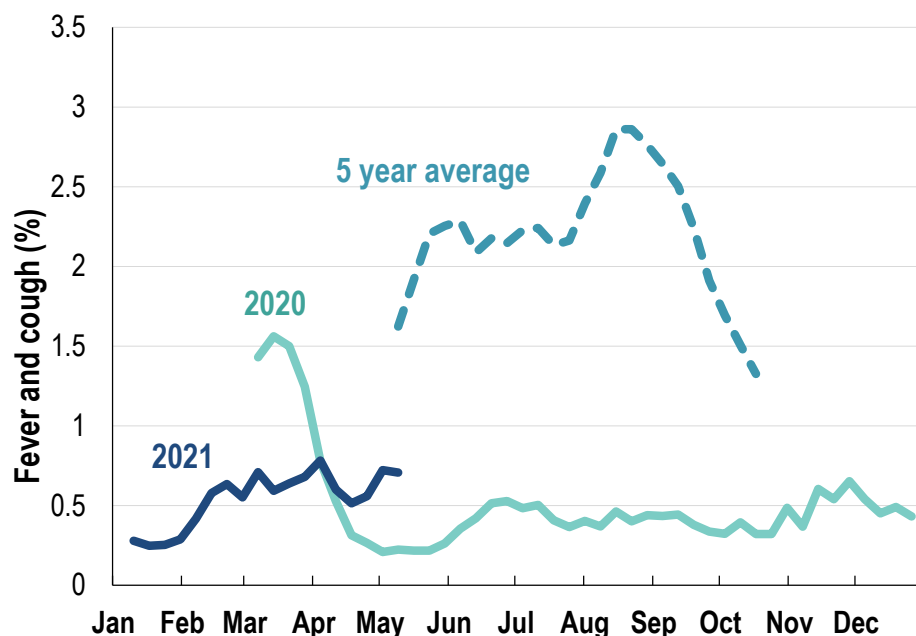


This week influenza-like illness activity is low 64,662 participants this week

Influenza-like illness activity*:

*Influenza-like illness activity is defined as fever & cough for this report

0.7% this week: flu-like illness activity is low

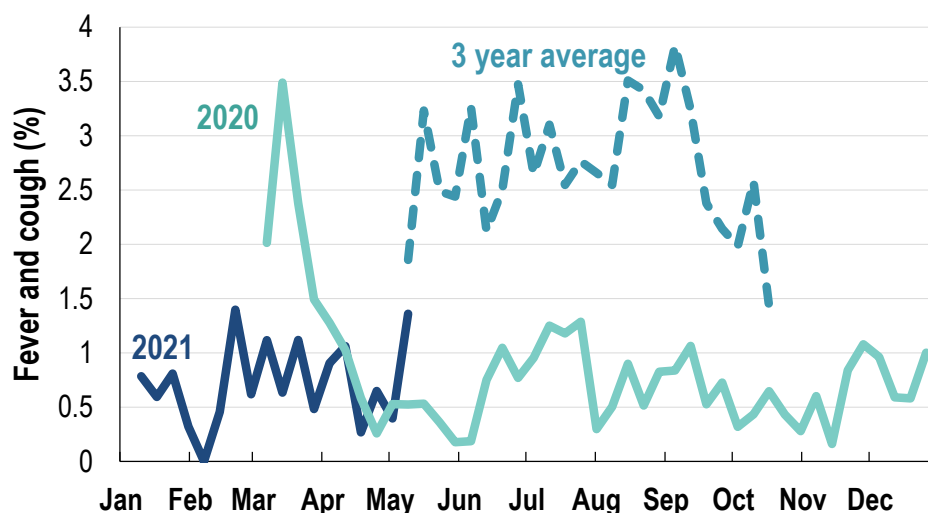


*5 year average is calculated using 2015, 2016, 2017, 2018 and 2019 data

*Data are age standardised in this chart

Influenza-like illness activity among Aboriginal and Torres Strait Islander participants

1.4% this week: flu-like illness activity is low



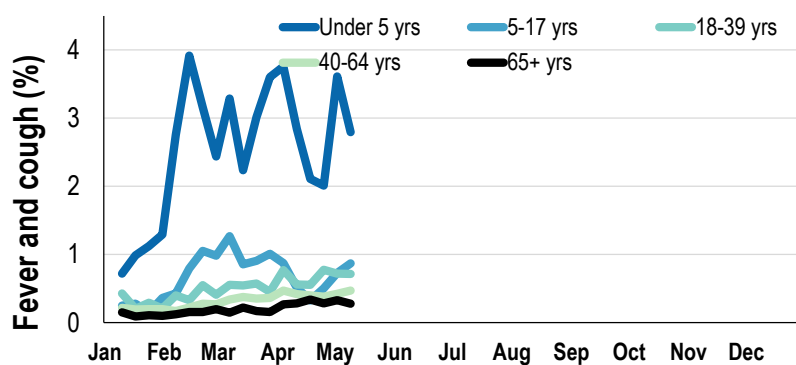
*Average Number of Aboriginal and Torres Strait Islander Participants = 656

*3 year average is calculated using 2017, 2018 and 2019 data

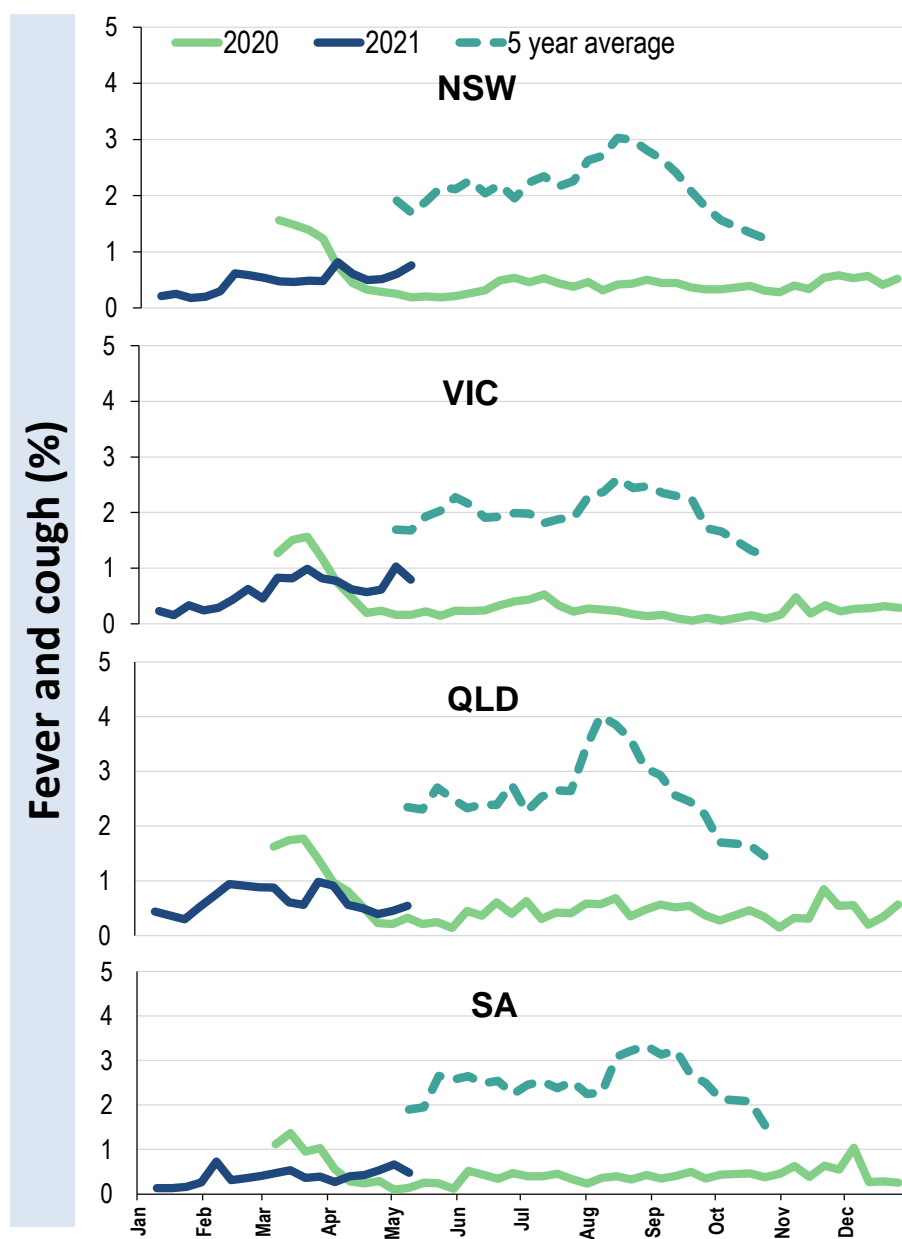
Influenza-like illness severity: <i>49% of participants with fever and cough sought medical advice this week</i>		
Influenza-like illness Severity	Week ending 09 May 2021 number (%)	Week ending 02 May 2021 number (%)
Number of participants	64662 (100%)	59166 (100%)
Fever & cough	337 (0.5%)	288 (0.5%)
Fever, cough & time-off normal duties	232 (0.4%)	198 (0.3%)
Fever, cough & 3 or more days off work/normal duties	132 (0.2%)	110 (0.2%)
Number of participants with fever and cough	337 (100%)	288 (100%)
*Sought medical advice for fever and cough	165 (49%)	144 (50%)
Admitted to hospital	4 (1.2%)	5 (1.7%)
Tested for influenza	30 (8.9%)	24 (8.3%)
Tested, result positive for influenza	1 (0.3%)	2 (0.7%)
Tested for coronavirus (COVID-19)	132 (39.2%)	119 (41.3%)
Tested, result positive for coronavirus (COVID-19)	0 (0%)	0 (0%)

*Includes those who sought medical advice from a general practitioner, COVID-19 clinic, emergency department, or were admitted to hospital for fever & cough

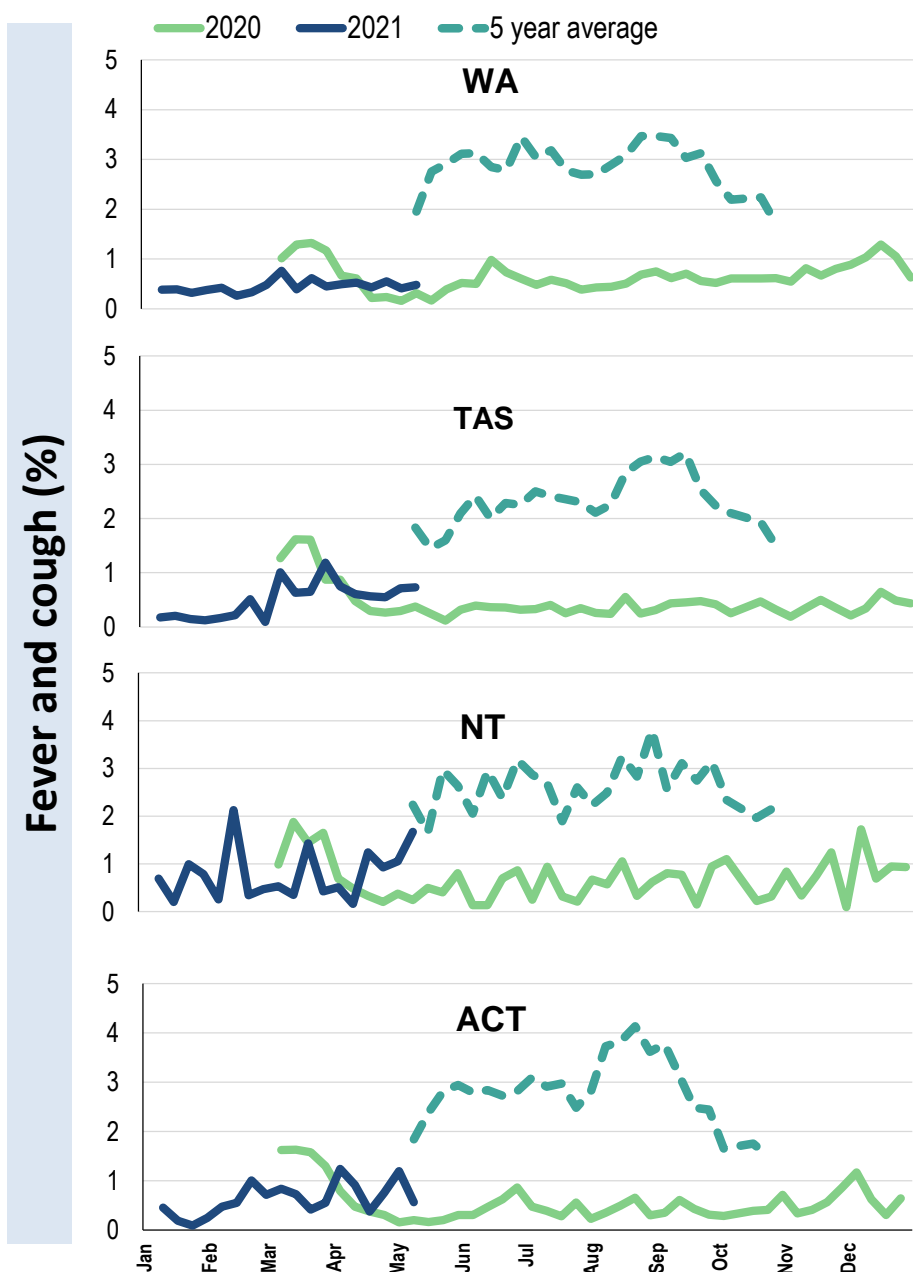
Influenza-like illness activity by age group (Australia):



Influenza-like illness activity by state/territory (age standardised):



Influenza-like illness activity by state/territory (age standardised):

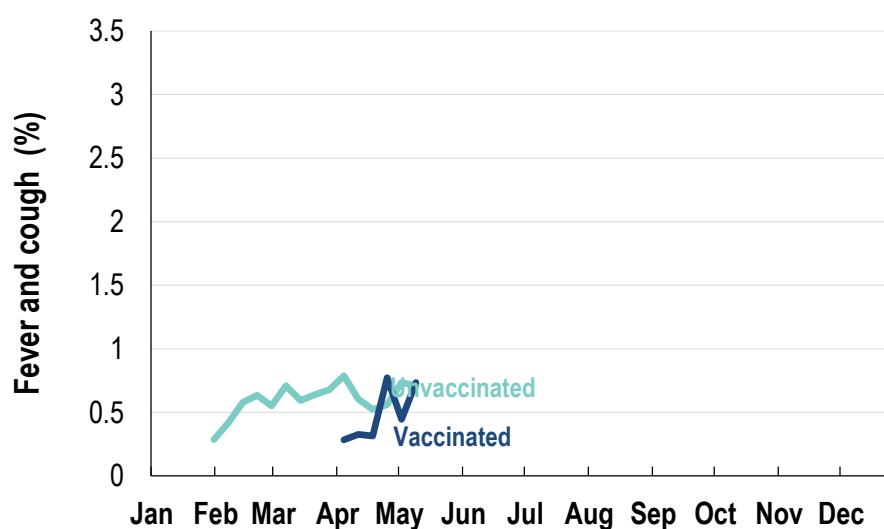


Participation:
64,662 participants (59,166 last week)

State	Participants	% Rate/100,000 population
NSW	22577	34.9% 285.9
VIC	13042	20.2% 205.1
QLD	8064	12.5% 163.0
SA	5741	8.9% 332.4
WA	6322	9.8% 244.4
TAS	4249	6.6% 814.0
NT	1133	1.8% 460.4
ACT	3534	5.5% 856.5
AUS	64662	100.0% 261.8

Vaccination rates:
Vaccinated participants:

	COVID-19 (%)	Influenza (%)
<5 years		16.4
5-17 years		14.5
18-64 years	27.0	38.6
65+ years	49.9	57.3
Working with patients	65.3	38.1
First Nations	23.3	31.6
Vaccinated overall (%)	31.1	41.8



* Data are age standardised in this chart

^2021 Influenza vaccination data not available until 04/04/21 due to low counts

