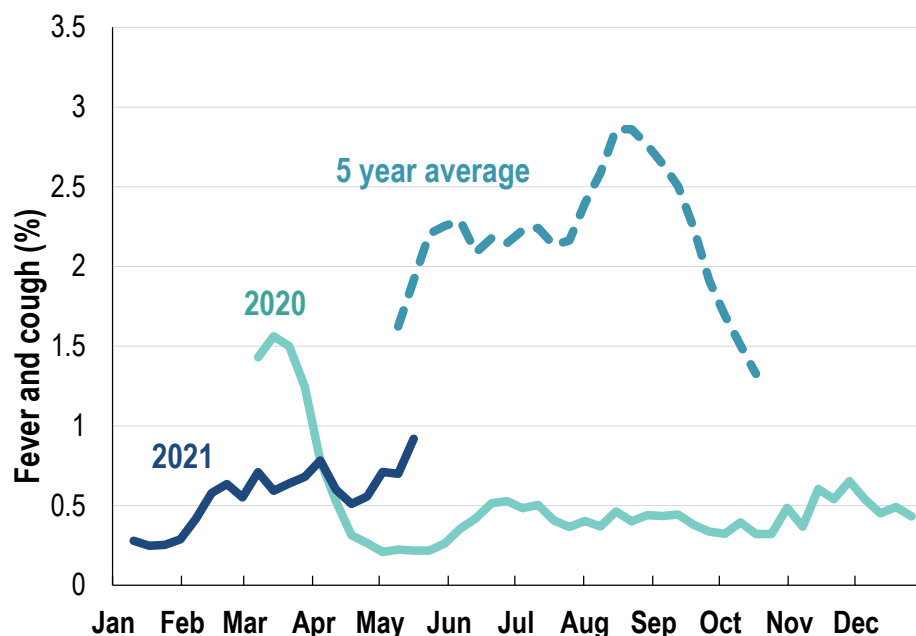


## This week influenza-like illness activity is low 65,573 participants this week

### Influenza-like illness activity\*:

\*Influenza-like illness activity is defined as fever & cough for this report

**0.9% this week: flu-like illness activity is low**

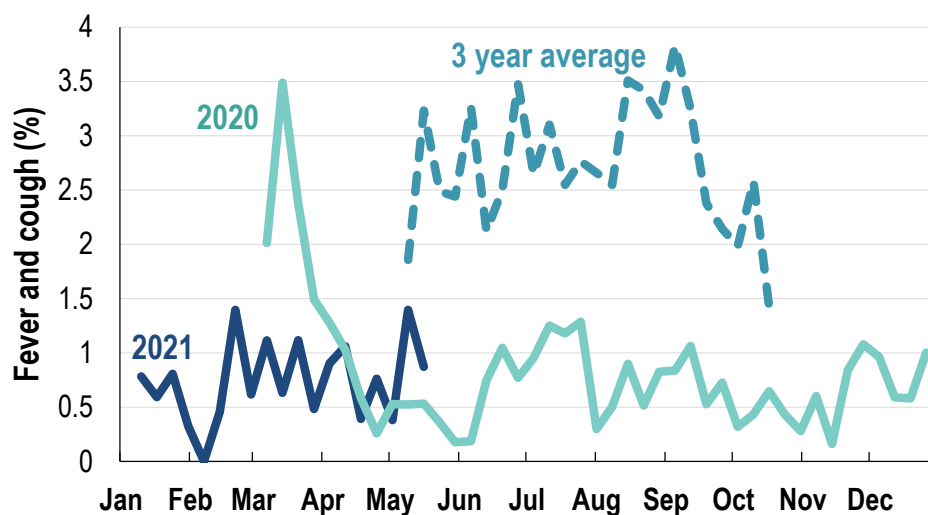


\*5 year average is calculated using 2015, 2016, 2017, 2018 and 2019 data

\*Data are age standardised in this chart

### Influenza-like illness activity among Aboriginal and Torres Strait Islander participants

**0.9% this week: flu-like illness activity is low**



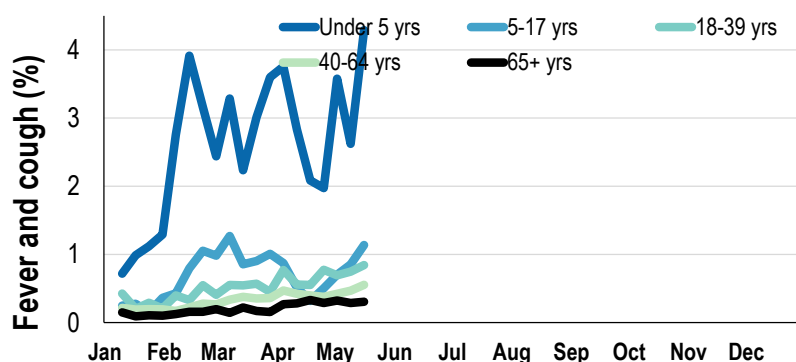
\*Average Number of Aboriginal and Torres Strait Islander Participants = 664

\*3 year average is calculated using 2017, 2018 and 2019 data

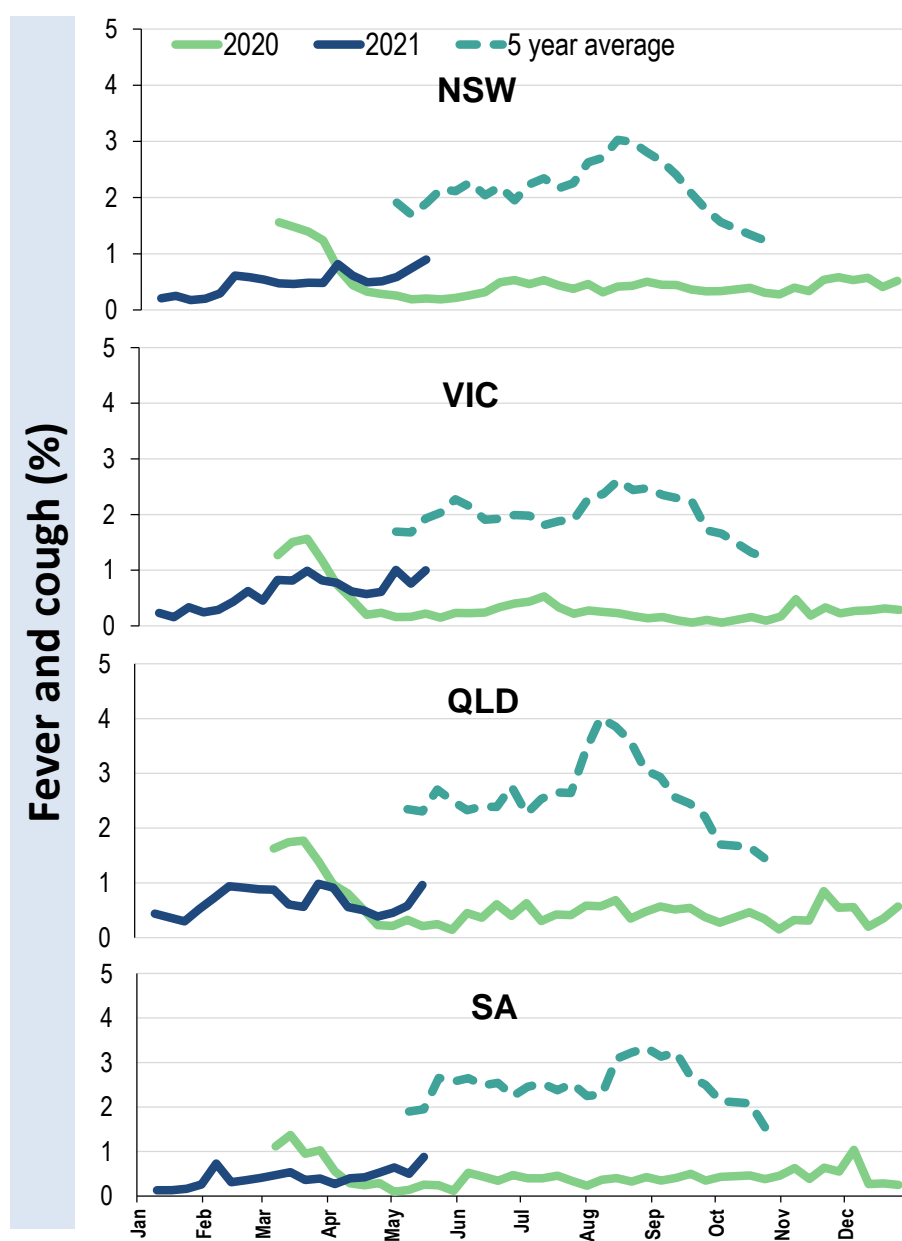
<b>Influenza-like illness severity:</b> <i>47.6% of participants with fever and cough sought medical advice this week</i>		
Influenza-like illness Severity	Week ending 16 May 2021 number (%)	Week ending 09 May 2021 number (%)
<b>Number of participants</b>	65573 (100%)	64662 (100%)
Fever & cough	416 (0.6%)	337 (0.5%)
Fever, cough & time-off normal duties	291 (0.4%)	239 (0.4%)
Fever, cough & 3 or more days off work/normal duties	150 (0.2%)	144 (0.2%)
<b>Number of participants with fever and cough</b>	416 (100%)	337 (100%)
*Sought medical advice for fever and cough	198 (47.6%)	173 (51.3%)
Admitted to hospital	7 (1.7%)	5 (1.5%)
Tested for influenza	30 (7.2%)	34 (10.1%)
Tested, result positive for influenza	2 (0.5%)	1 (0.3%)
Tested for coronavirus (COVID- 19)	149 (35.8%)	147 (43.6%)
Tested, result positive for coronavirus (COVID-19)	0 (0%)	0 (0%)

\*Includes those who sought medical advice from a general practitioner, COVID-19 clinic, emergency department, or were admitted to hospital for fever & cough

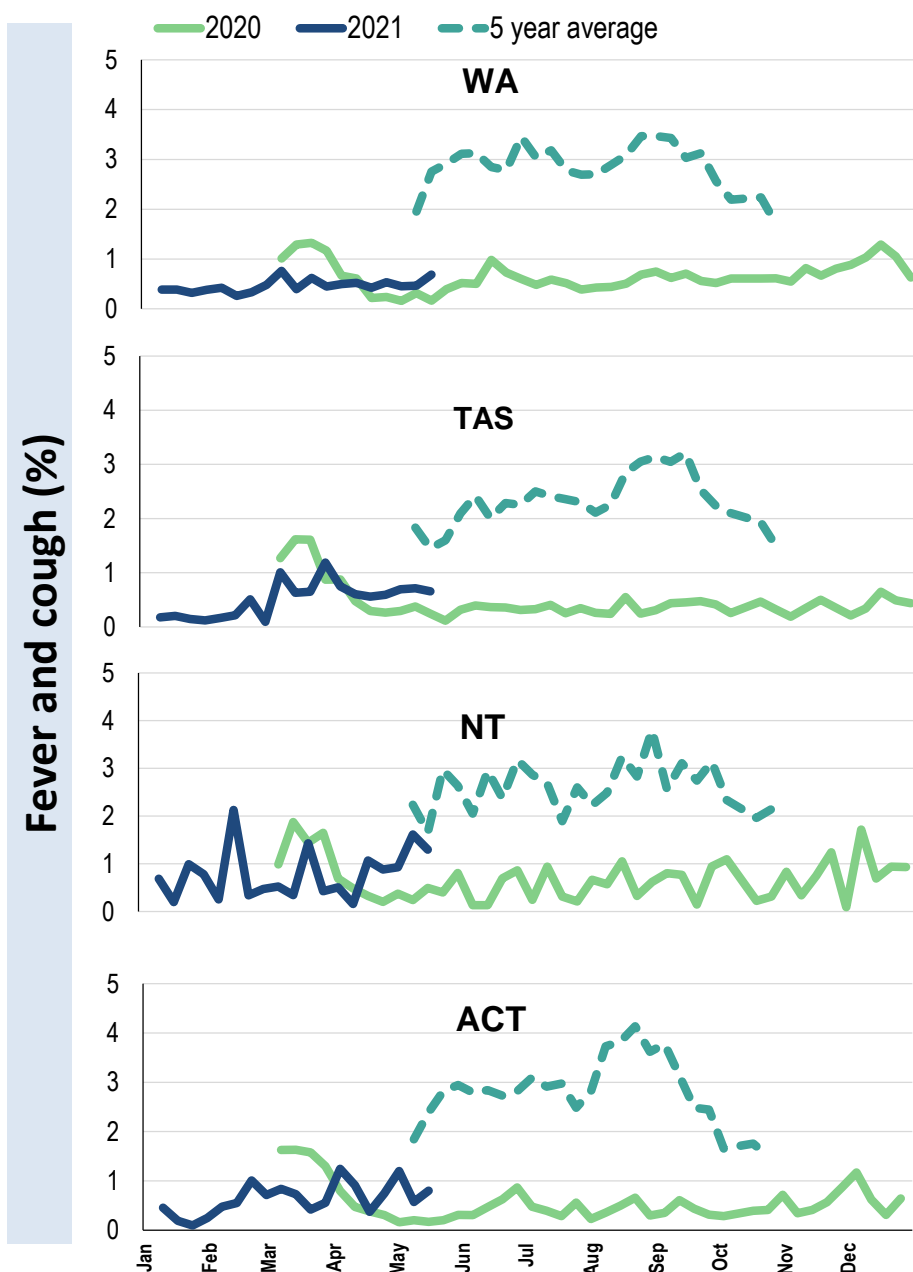
**Influenza-like illness activity by age group (Australia):**



**Influenza-like illness activity by state/territory (age standardised):**



**Influenza-like illness activity by state/territory (age standardised):**

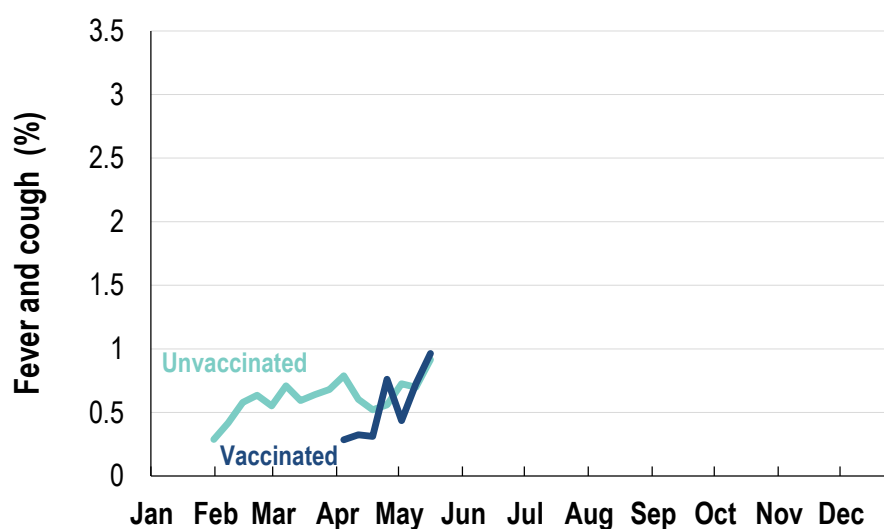


**Participation:**
**65,573 participants (64,662 last week)**

State	Participants	%	Rate/100,000 population
NSW	22764	34.7%	<b>288.3</b>
VIC	13197	20.1%	<b>207.5</b>
QLD	8139	12.4%	<b>164.5</b>
SA	5715	8.7%	<b>330.9</b>
WA	6782	10.3%	<b>262.1</b>
TAS	4238	6.5%	<b>811.9</b>
NT	1106	1.7%	<b>449.4</b>
ACT	3632	5.5%	<b>880.3</b>
AUS	65573	100.0%	<b>265.4</b>

**Vaccination rates:**
**Vaccinated participants:**

	COVID-19 (%)	Influenza (%)
<5 years		21.9
5-17 years		17.2
18-64 years	31.6	45.6
65+ years	57.3	66.2
Working with patients	69.7	47.3
First Nations	28.8	37.4
<b>Vaccinated overall (%)</b>	<b>36.1</b>	<b>49.0</b>



\* Data are age standardised in this chart

^2021 Influenza vaccination data not available until 04/04/21 due to low counts

