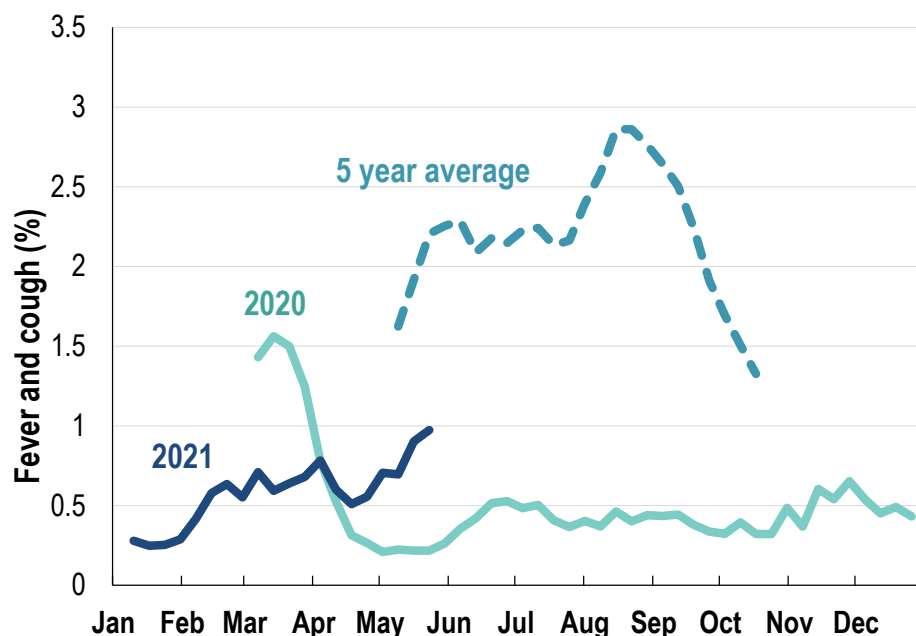


## This week influenza-like illness activity is low 65,796 participants this week

### Influenza-like illness activity\*:

\*Influenza-like illness activity is defined as fever & cough for this report

**1% this week: flu-like illness activity is low**

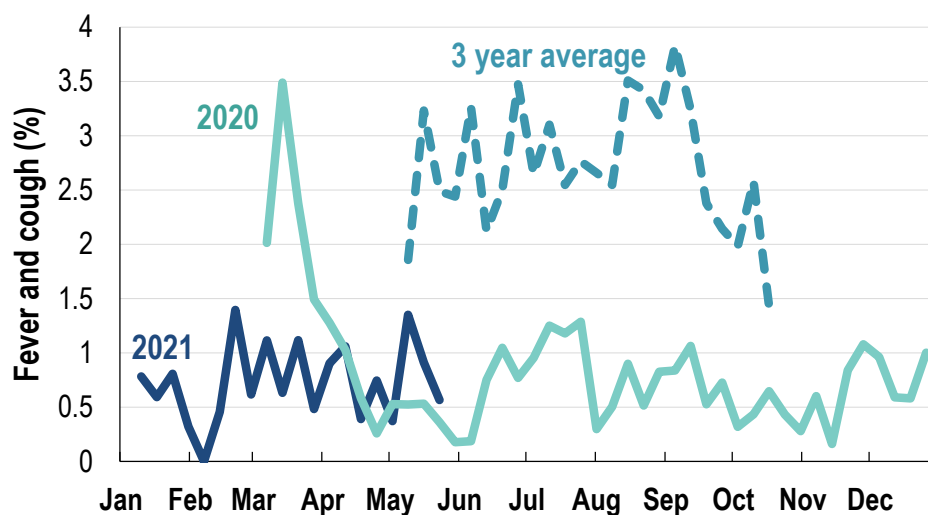


\*5 year average is calculated using 2015, 2016, 2017, 2018 and 2019 data

\*Data are age standardised in this chart

### Influenza-like illness activity among Aboriginal and Torres Strait Islander participants

**0.6% this week: flu-like illness activity is low**



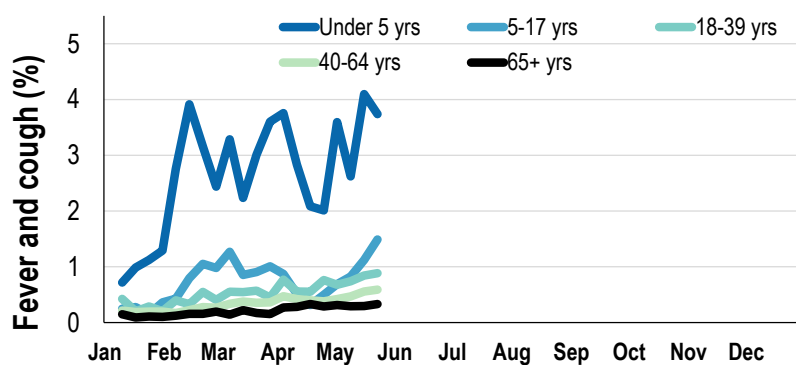
\*Average Number of Aboriginal and Torres Strait Islander Participants = 674

\*3 year average is calculated using 2017, 2018 and 2019 data

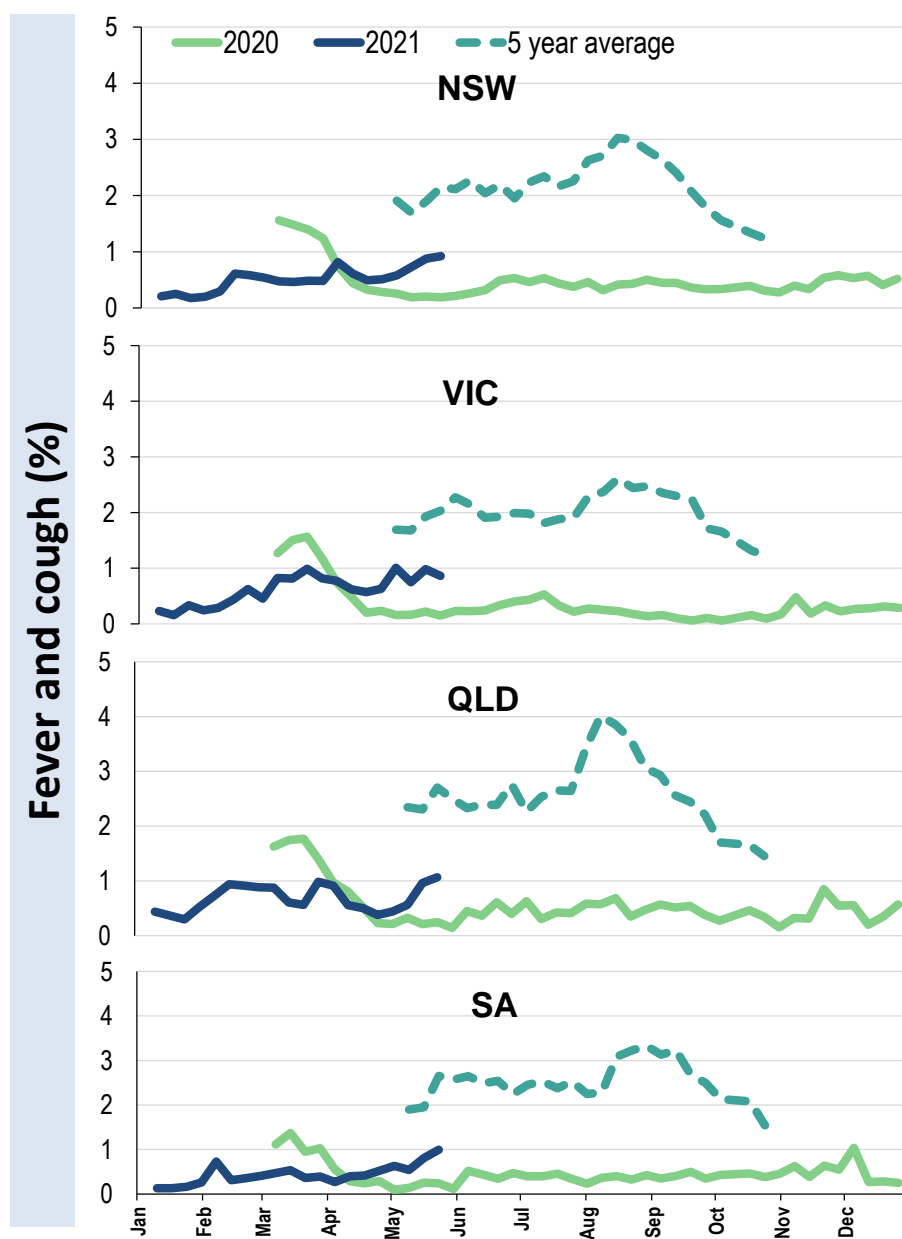
<b>Influenza-like illness severity:</b> <i>42.8% of participants with fever and cough sought medical advice this week</i>		
Influenza-like illness Severity	Week ending 23 May 2021 number (%)	Week ending 16 May 2021 number (%)
<b>Number of participants</b>	65796 (100%)	65573 (100%)
Fever & cough	453 (0.7%)	415 (0.6%)
Fever, cough & time-off normal duties	329 (0.5%)	314 (0.5%)
Fever, cough & 3 or more days off work/normal duties	174 (0.3%)	180 (0.3%)
<b>Number of participants with fever and cough</b>	453 (100%)	415 (100%)
*Sought medical advice for fever and cough	194 (42.8%)	223 (53.7%)
Admitted to hospital	5 (1.1%)	7 (1.7%)
Tested for influenza	39 (8.6%)	37 (8.9%)
Tested, result positive for influenza	0 (0%)	2 (0.5%)
Tested for coronavirus (COVID-19)	159 (35.1%)	175 (42.2%)
Tested, result positive for coronavirus (COVID-19)	0 (0%)	0 (0%)

\*Includes those who sought medical advice from a general practitioner, COVID-19 clinic, emergency department, or were admitted to hospital for fever & cough

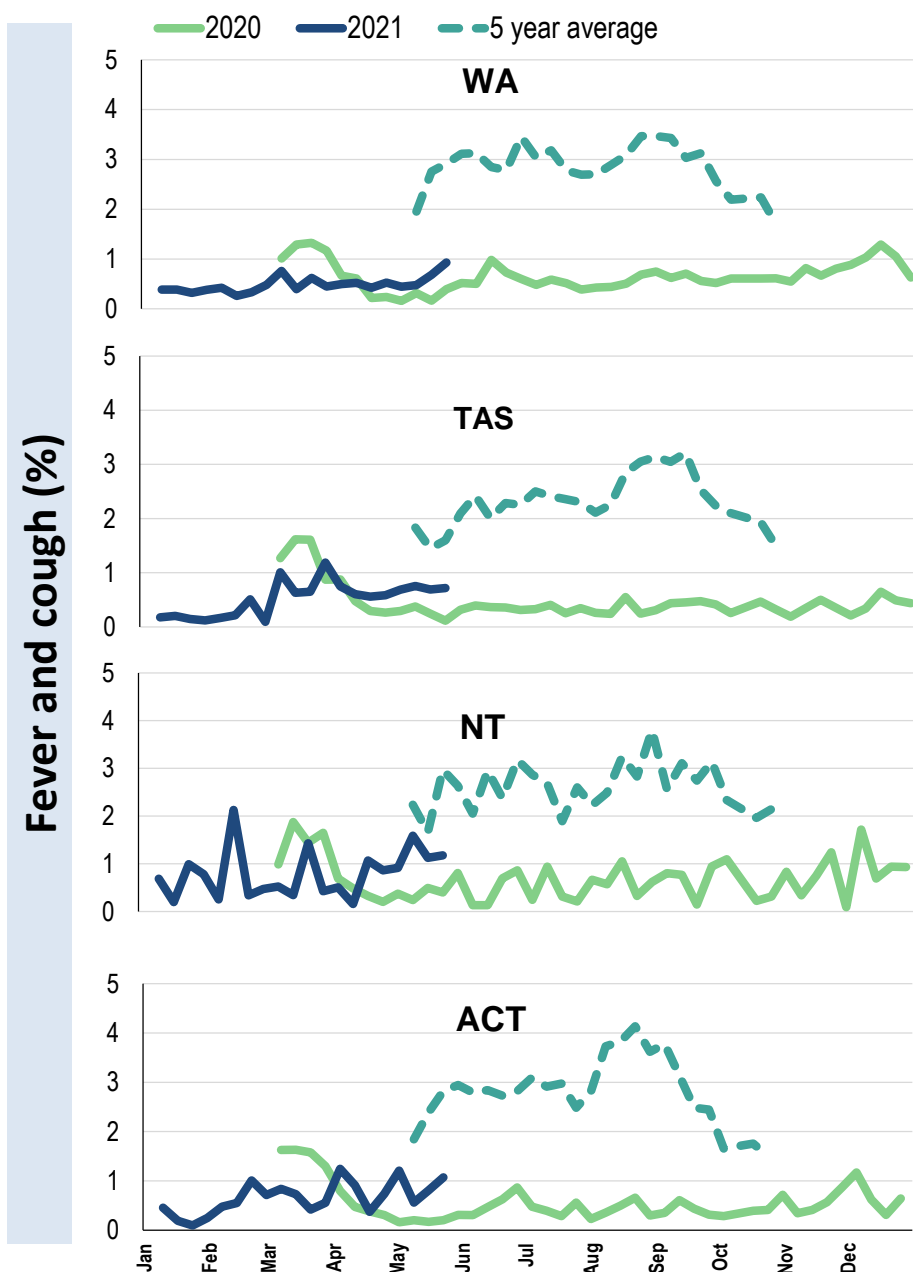
**Influenza-like illness activity by age group (Australia):**



**Influenza-like illness activity by state/territory (age standardised):**



**Influenza-like illness activity by state/territory (age standardised):**

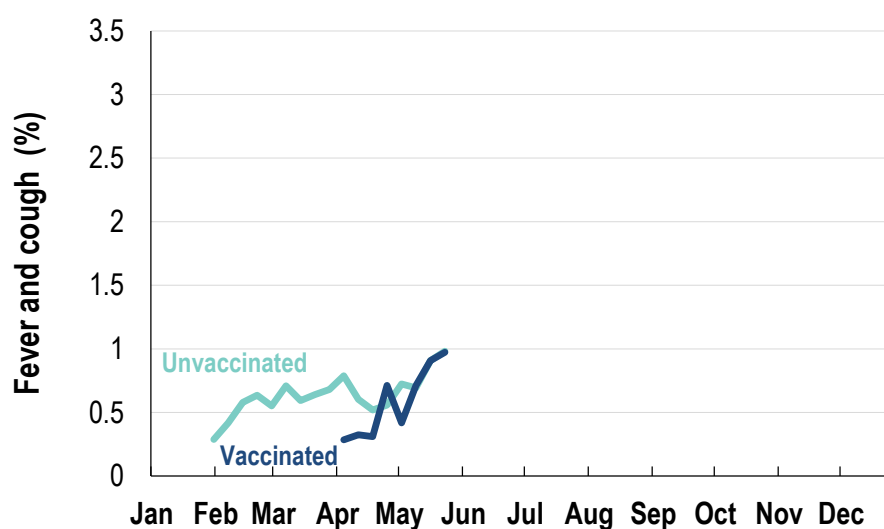


**Participation:**
**65,796 participants (65,573 last week)**

State	Participants	% Rate/100,000 population
NSW	22997	35.0% <b>291.3</b>
VIC	13163	20.0% <b>207.0</b>
QLD	8163	12.4% <b>165.0</b>
SA	5775	8.8% <b>334.4</b>
WA	6668	10.1% <b>257.7</b>
TAS	4232	6.4% <b>810.7</b>
NT	1147	1.7% <b>466.1</b>
ACT	3651	5.5% <b>884.9</b>
AUS	65796	100.0% <b>266.3</b>

**Vaccination rates:**
**Vaccinated participants:**

	COVID-19 (%)	Influenza (%)
<5 years		27.2
5-17 years	0.2	20.9
18-64 years	37.0	51.4
65+ years	64.5	72.9
Working with patients	72.4	55.4
Aboriginal and/or Torres Strait Islander	28.5	41.2
<b>Vaccinated overall (%)</b>	<b>41.6</b>	<b>54.9</b>



\* Data are age standardised in this chart

^2021 Influenza vaccination data not available until 04/04/21 due to low counts

