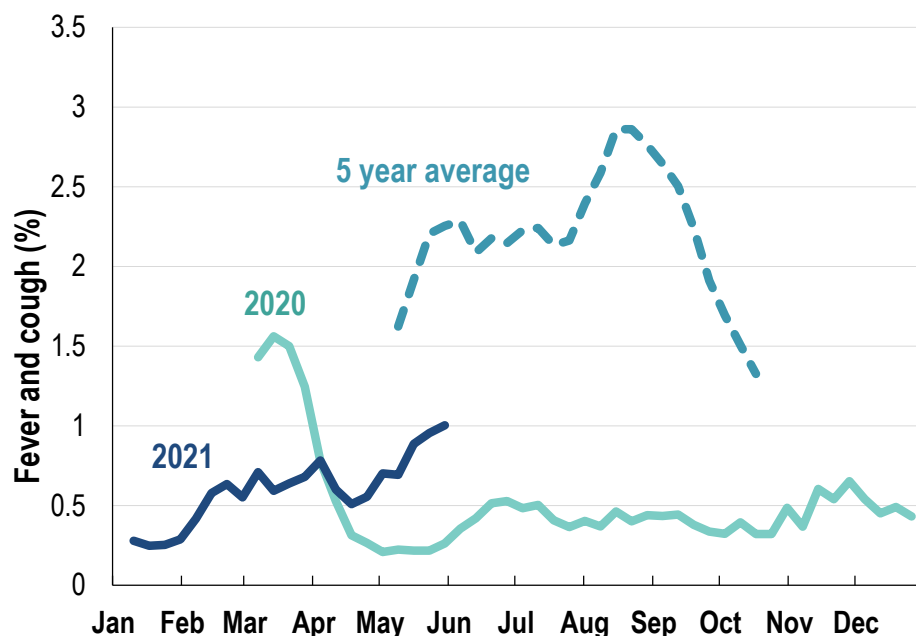


This week influenza-like illness activity is low 66,401 participants this week

Influenza-like illness activity*:

*Influenza-like illness activity is defined as fever & cough for this report

1% this week: flu-like illness activity is low

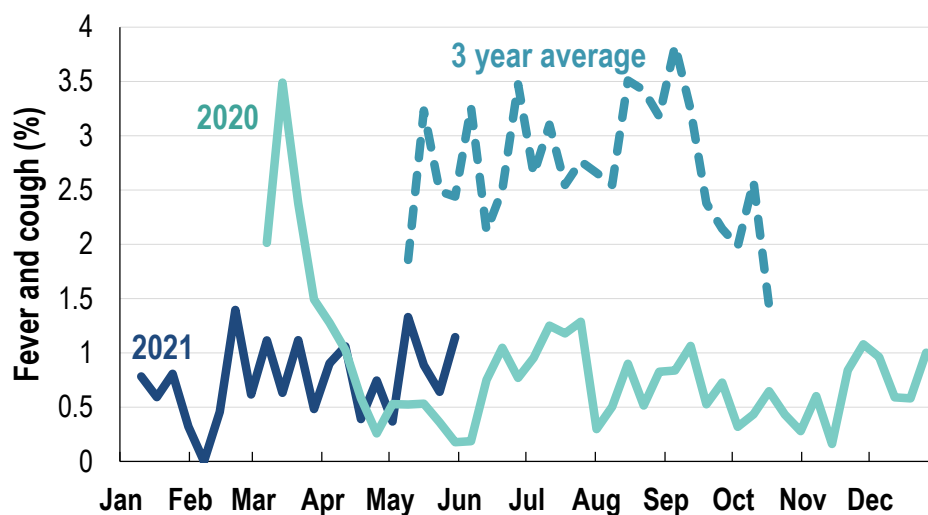


*5 year average is calculated using 2015, 2016, 2017, 2018 and 2019 data

[^] Data are age standardised in this chart

Influenza-like illness activity among Aboriginal and Torres Strait Islander participants

1.1% this week: flu-like illness activity is low



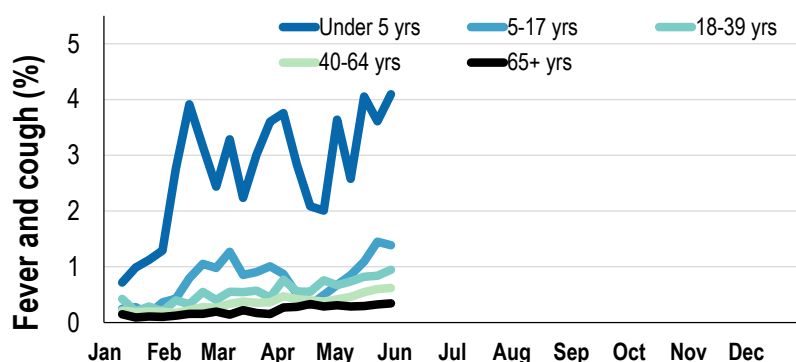
*Average Number of Aboriginal and Torres Strait Islander Participants = 680

[^] 3 year average is calculated using 2017, 2018 and 2019 data

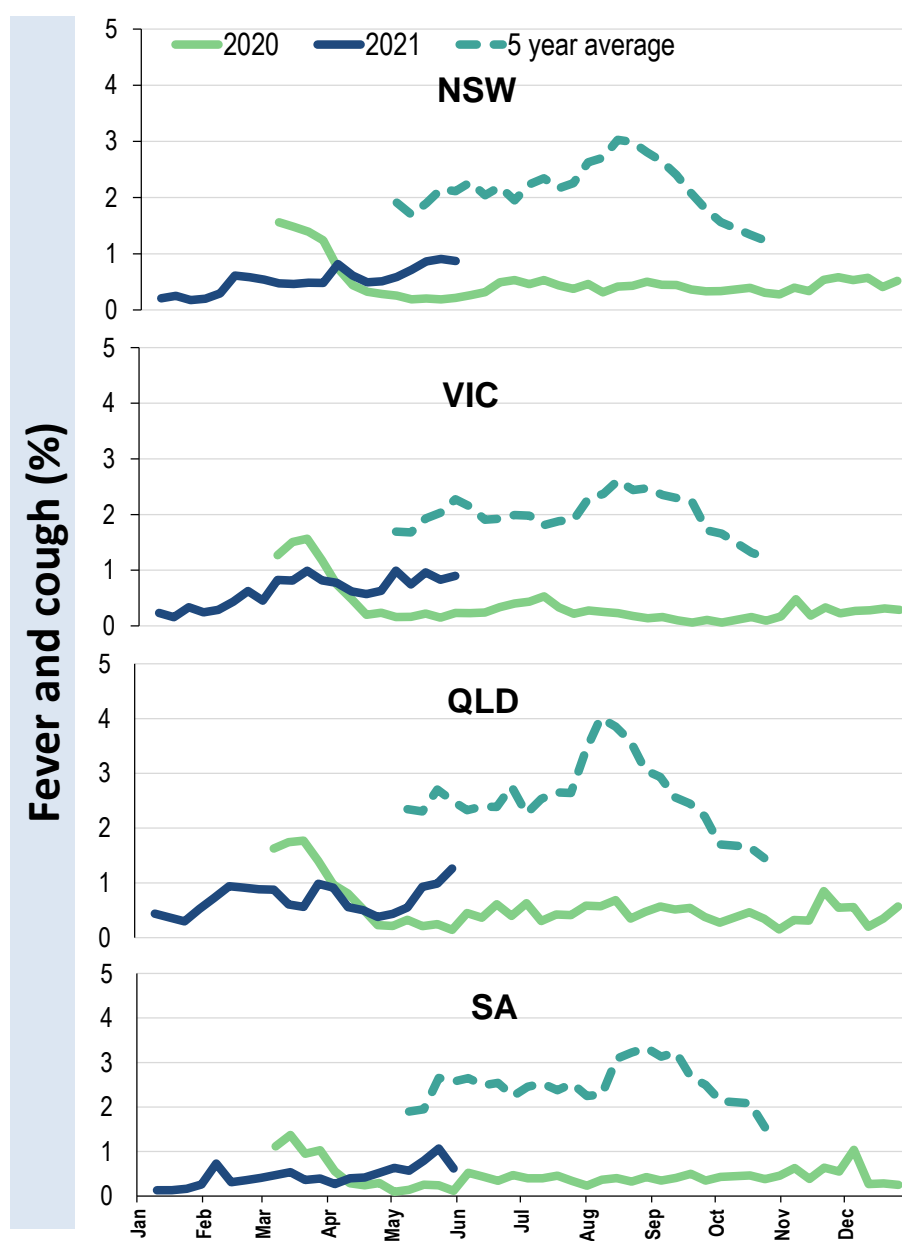
Influenza-like illness severity: <i>47.9% of participants with fever and cough sought medical advice this week</i>		
Influenza-like illness Severity	Week ending 30 May 2021 number (%)	Week ending 23 May 2021 number (%)
Number of participants	66401 (100%)	65796 (100%)
Fever & cough	472 (0.7%)	453 (0.7%)
Fever, cough & time-off normal duties	332 (0.5%)	349 (0.5%)
Fever, cough & 3 or more days off work/normal duties	183 (0.3%)	208 (0.3%)
Number of participants with fever and cough	472 (100%)	453 (100%)
*Sought medical advice for fever and cough	226 (47.9%)	216 (47.7%)
Admitted to hospital	5 (1.1%)	6 (1.3%)
Tested for influenza	39 (8.3%)	50 (11%)
Tested, result positive for influenza	2 (0.4%)	1 (0.2%)
Tested for coronavirus (COVID-19)	178 (37.7%)	189 (41.7%)
Tested, result positive for coronavirus (COVID-19)	0 (0%)	0 (0%)

*Includes those who sought medical advice from a general practitioner, COVID-19 clinic, emergency department, or were admitted to hospital for fever & cough

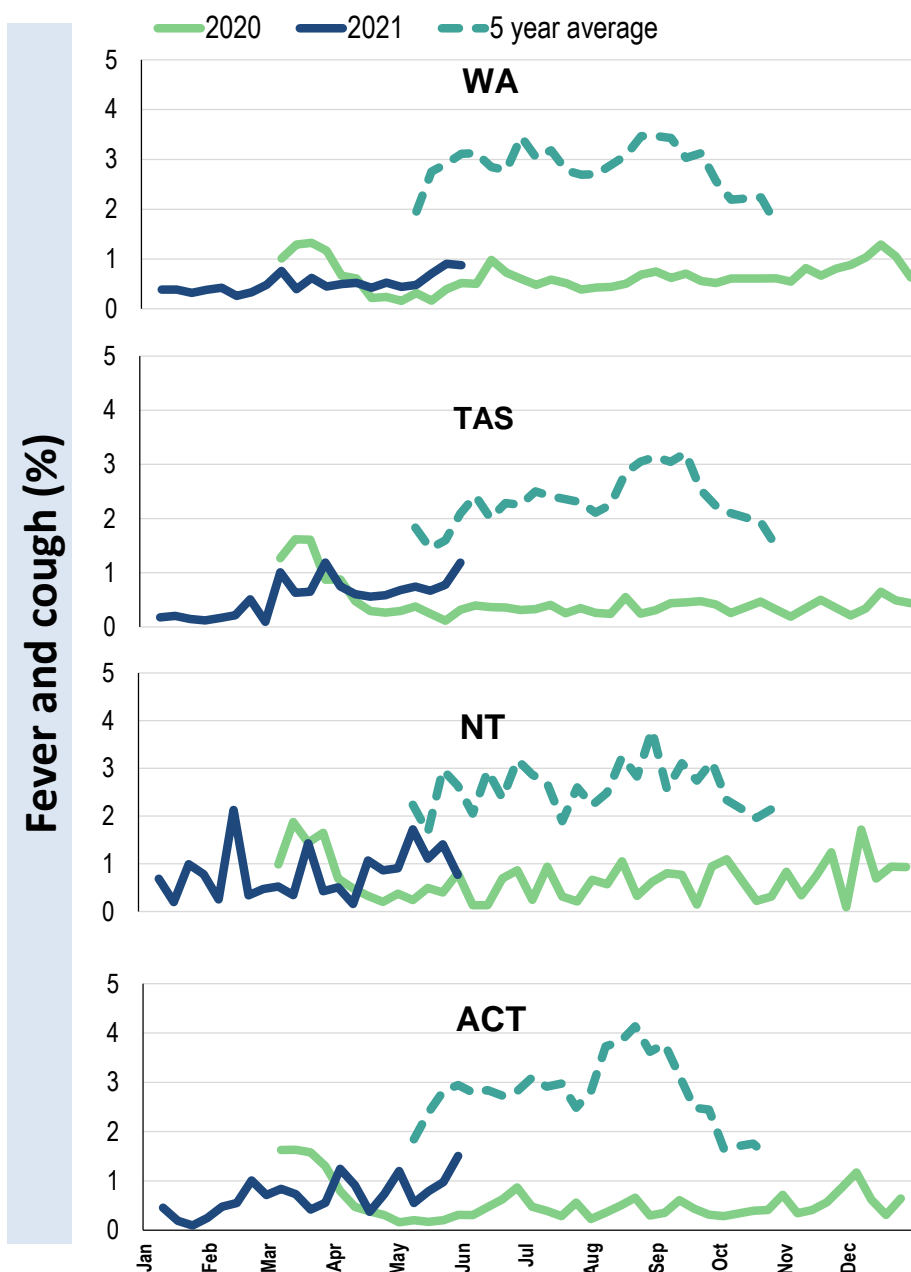
Influenza-like illness activity by age group (Australia):



Influenza-like illness activity by state/territory (age standardised):



Influenza-like illness activity by state/territory (age standardised):



Participation:
66,401 participants (65,796 last week)

State	Participants	% Rate/100,000 population
NSW	22984	34.6% 291.1
VIC	13554	20.4% 213.2
QLD	8286	12.5% 167.4
SA	5799	8.7% 335.8
WA	6771	10.2% 261.7
TAS	4256	6.4% 815.3
NT	1125	1.7% 457.1
ACT	3626	5.5% 878.8
AUS	66401	100.0% 268.8

Vaccination rates:
Vaccinated participants:

	COVID-19 (%)	Influenza (%)
<5 years		33.1
5-17 years	0.3	23.6
18-64 years	43.6	56.3
65+ years	71.6	78.6
Working with patients	75.5	62.4
Aboriginal and/or Torres Strait Islander	32.6	47.2
Vaccinated overall (%)	47.6	59.8



* Data are age standardised in this chart

^2021 Influenza vaccination data not available until 04/04/21 due to low counts

