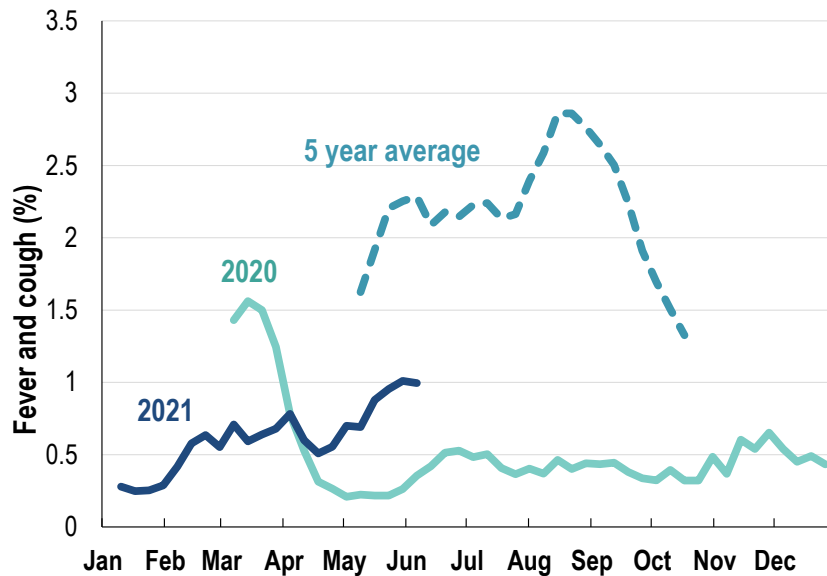


This week influenza-like illness activity is low
66,727 participants this week

Influenza-like illness activity*:

*Influenza-like illness activity is defined as fever & cough for this report

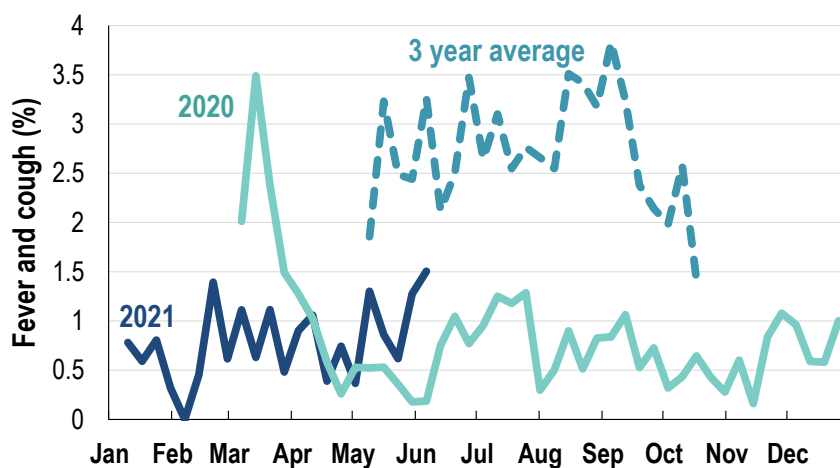
1% this week: flu-like illness activity is low



*5 year average is calculated using 2015, 2016, 2017, 2018 and 2019 data
^ Data are age standardised in this chart

Influenza-like illness activity among Aboriginal and Torres Strait Islander participants

1.5% this week: flu-like illness activity is low



*Average Number of Aboriginal and Torres Strait Islander Participants = 691

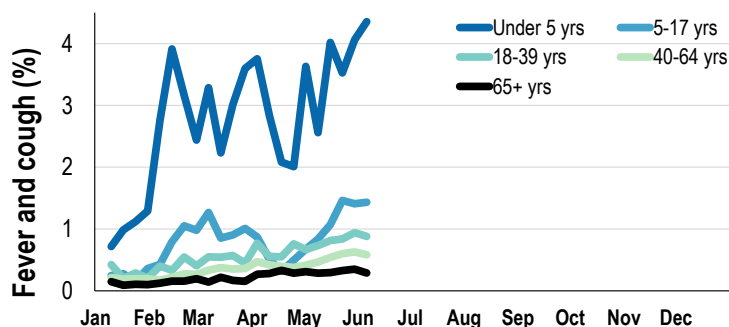
^3 year average is calculated using 2017, 2018 and 2019 data

Influenza-like illness severity:
48.8% of participants with fever and cough sought medical advice this week

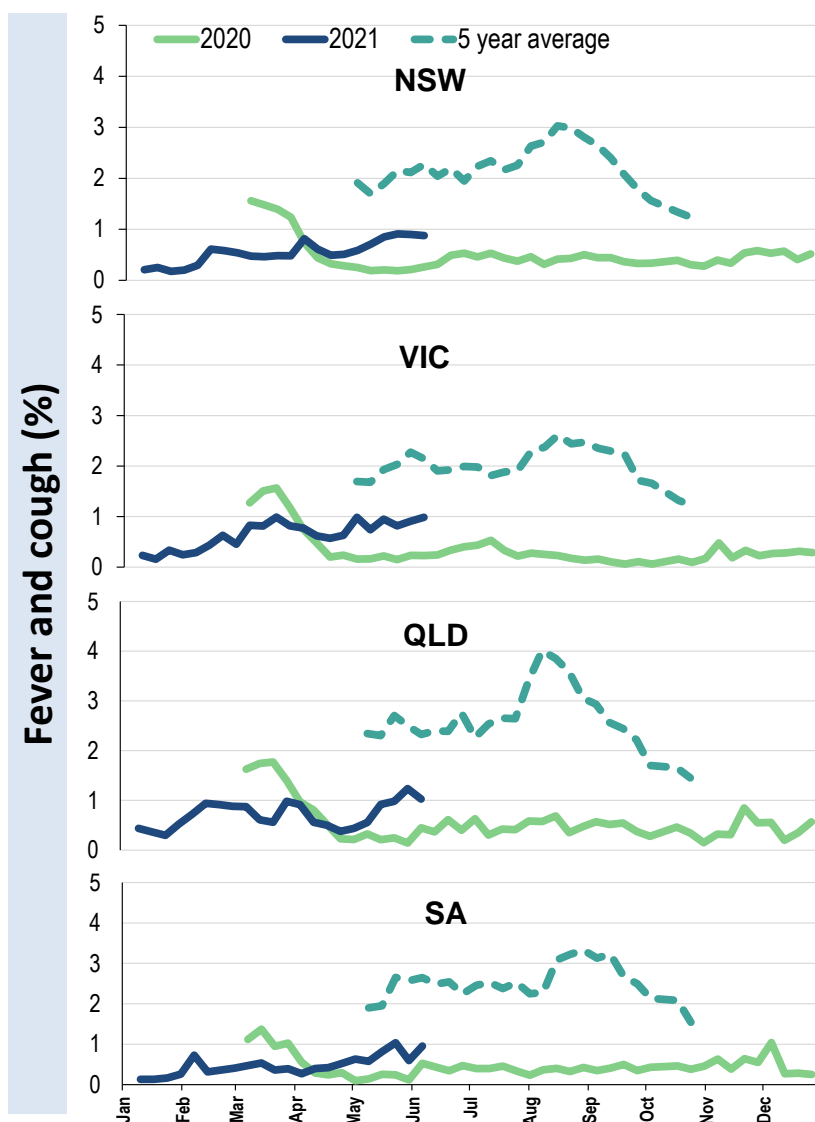
Influenza-like illness Severity	Week ending 06 June 2021 number (%)	Week ending 30 May 2021 number (%)
Number of participants	66727 (100%)	66401 (100%)
Fever & cough	449 (0.7%)	472 (0.7%)
Fever, cough & time-off normal duties	303 (0.5%)	351 (0.5%)
Fever, cough & 3 or more days off work/normal duties	168 (0.3%)	209 (0.3%)
Number of participants with fever and cough	449 (100%)	472 (100%)
*Sought medical advice for fever and cough	219 (48.8%)	250 (53%)
Admitted to hospital	4 (0.9%)	6 (1.3%)
Tested for influenza	40 (8.9%)	44 (9.3%)
Tested, result positive for influenza	2 (0.4%)	2 (0.4%)
Tested for coronavirus (COVID- 19)	187 (41.6%)	208 (44.1%)
Tested, result positive for coronavirus (COVID-19)	0 (0%)	0 (0%)

*Includes those who sought medical advice from a general practitioner, COVID-19 clinic, emergency department, or were admitted to hospital for fever & cough

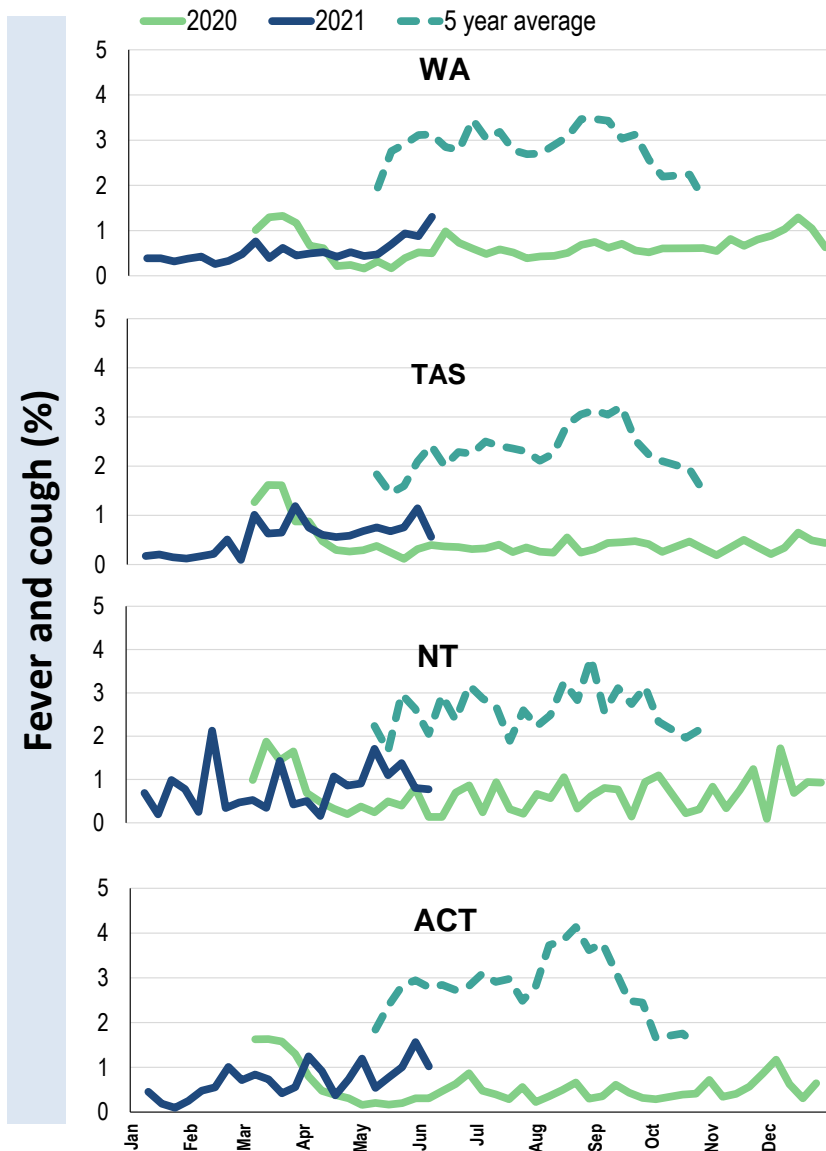
Influenza-like illness activity by age group (Australia):



Influenza-like illness activity by state/territory (age standardised):



Influenza-like illness activity by state/territory (age standardised):

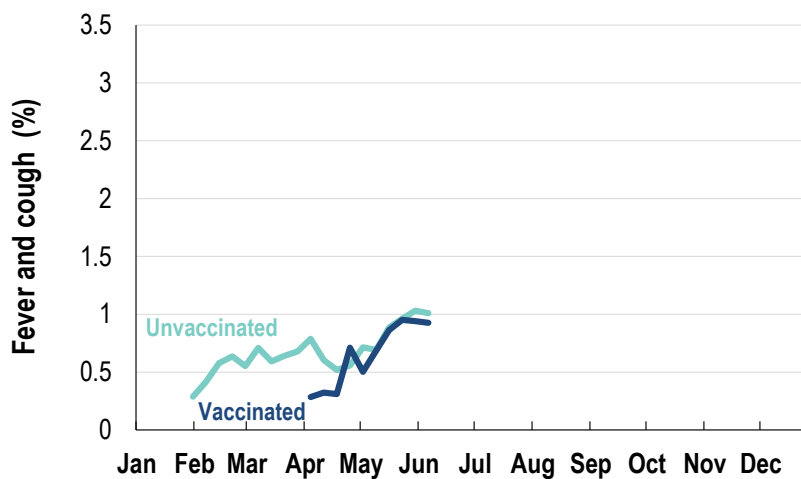


Participation:
66,727 participants (66,401 last week)

State	Participants	% Rate/100,000 population
NSW	23116	34.6% 292.8
VIC	13748	20.6% 216.2
QLD	8312	12.5% 168.0
SA	5809	8.7% 336.4
WA	6559	9.8% 253.5
TAS	4322	6.5% 828.0
NT	1115	1.7% 453.1
ACT	3746	5.6% 907.9
AUS	66727	100.0% 270.1

Vaccination rates:
Vaccinated participants:

	COVID-19 (%)	Influenza (%)
<5 years		37.2
5-17 years	0.4	27.0
18-64 years	50.0	59.6
65+ years	77.7	82.2
Working with patients	78.6	67.6
Aboriginal and/or Torres Strait Islander	36.0	49.5
Vaccinated overall (%)	53.4	63.4



* Data are age standardised in this chart

*2021 Influenza vaccination data not available until 04/04/21 due to low counts

