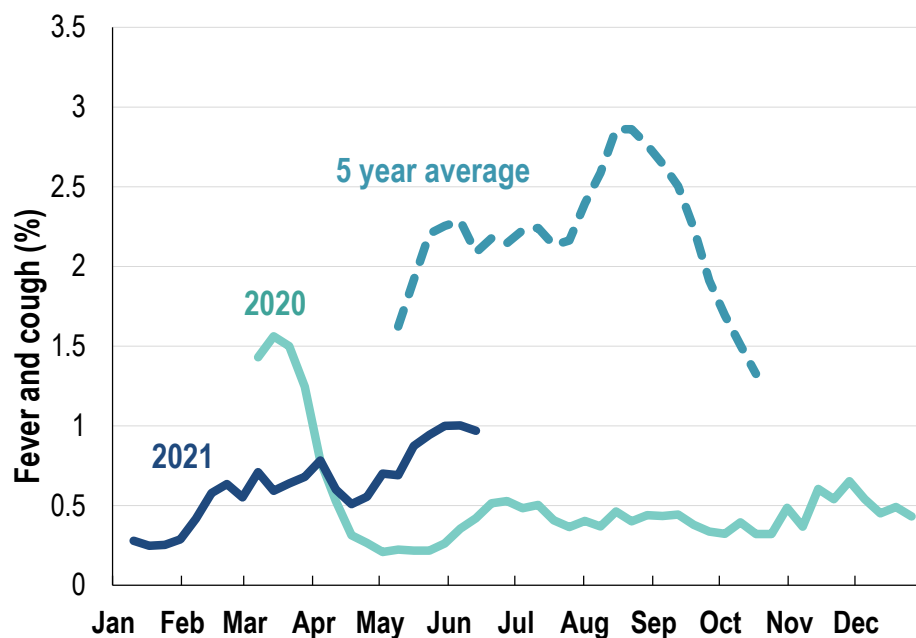


## This week influenza-like illness activity is low 66,428 participants this week

### Influenza-like illness activity\*:

\*Influenza-like illness activity is defined as fever & cough for this report

**1% this week: flu-like illness activity is low**

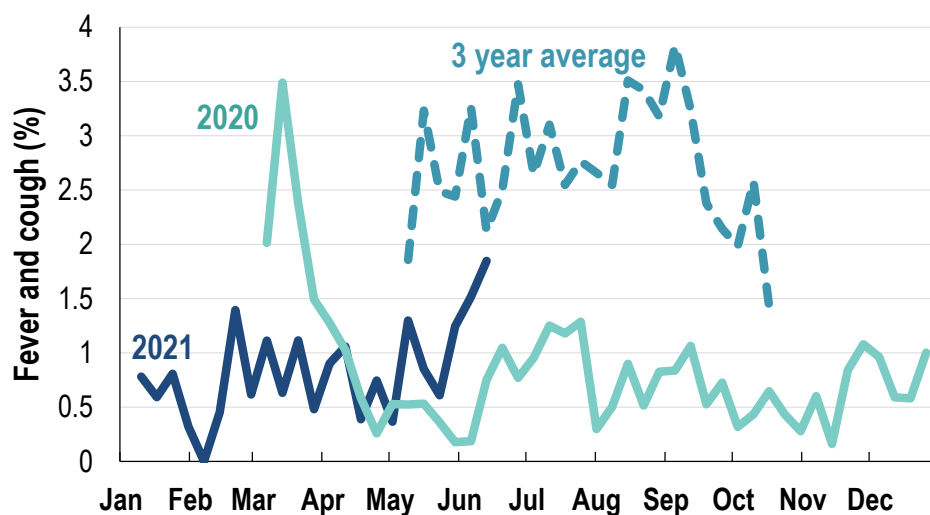


\*5 year average is calculated using 2015, 2016, 2017, 2018 and 2019 data

\*Data are age standardised in this chart

### Influenza-like illness activity among Aboriginal and Torres Strait Islander participants

**1.8% this week: flu-like illness activity is low**



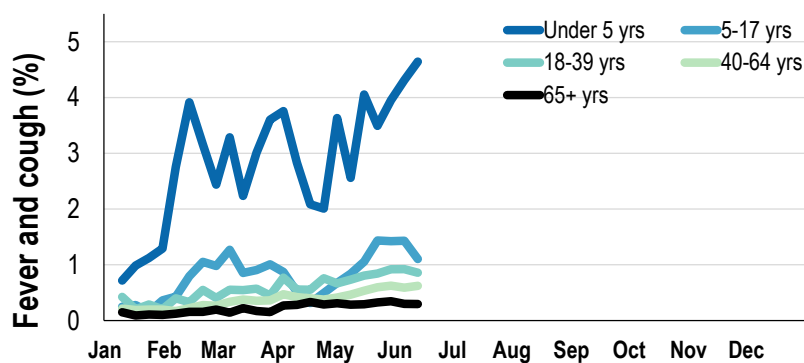
\*Average Number of Aboriginal and Torres Strait Islander Participants = 696

\*3 year average is calculated using 2017, 2018 and 2019 data

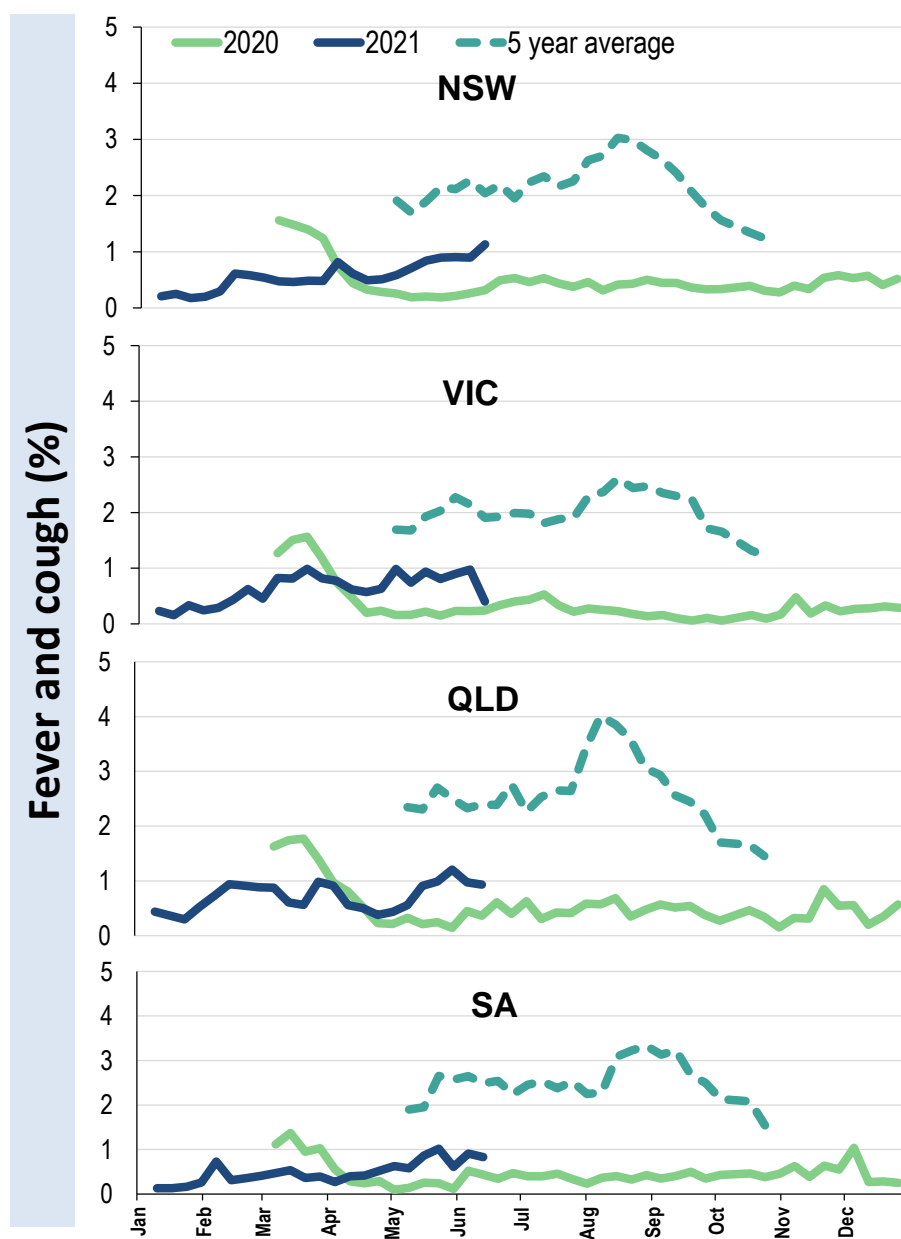
<b>Influenza-like illness severity:</b> <i>45.5% of participants with fever and cough sought medical advice this week</i>		
Influenza-like illness Severity	Week ending 13 June 2021 number (%)	Week ending 06 June 2021 number (%)
<b>Number of participants</b>	66428 (100%)	66727 (100%)
Fever & cough	440 (0.7%)	449 (0.7%)
Fever, cough & time-off normal duties	286 (0.4%)	318 (0.5%)
Fever, cough & 3 or more days off work/normal duties	146 (0.2%)	189 (0.3%)
<b>Number of participants with fever and cough</b>	440 (100%)	449 (100%)
*Sought medical advice for fever and cough	200 (45.5%)	230 (51.2%)
Admitted to hospital	4 (0.9%)	4 (0.9%)
Tested for influenza	39 (8.9%)	45 (10%)
Tested, result positive for influenza	3 (0.7%)	2 (0.4%)
Tested for coronavirus (COVID-19)	174 (39.5%)	211 (47%)
Tested, result positive for coronavirus (COVID-19)	0 (0%)	0 (0%)

\*Includes those who sought medical advice from a general practitioner, COVID-19 clinic, emergency department, or were admitted to hospital for fever & cough

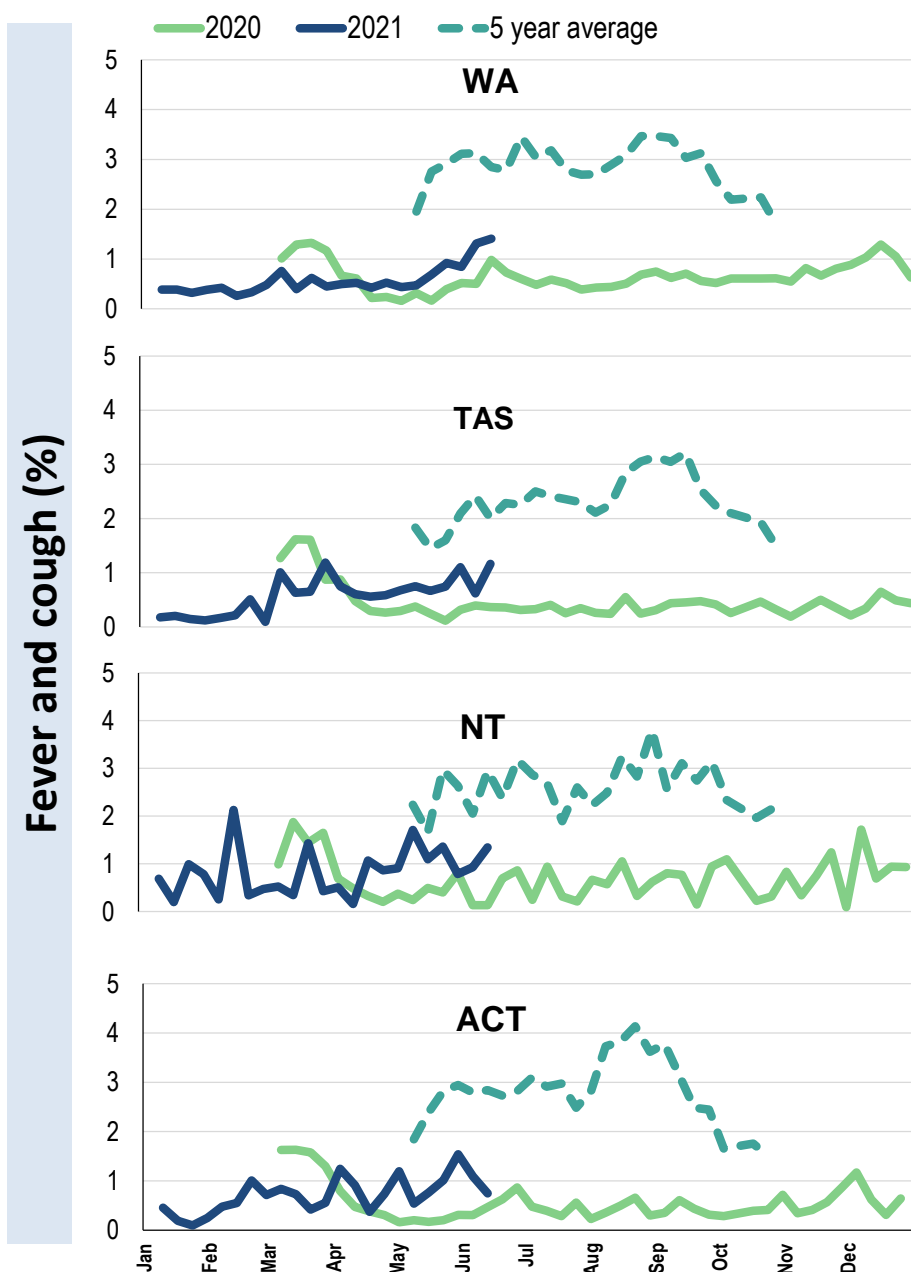
**Influenza-like illness activity by age group (Australia):**



**Influenza-like illness activity by state/territory (age standardised):**



**Influenza-like illness activity by state/territory (age standardised):**



**Participation:**
**66,428 participants (66,727 last week)**

State	Participants	% Rate/100,000 population
NSW	22843	34.4% <b>289.3</b>
VIC	13540	20.4% <b>212.9</b>
QLD	8336	12.5% <b>168.4</b>
SA	5766	8.7% <b>333.9</b>
WA	6796	10.2% <b>262.7</b>
TAS	4239	6.4% <b>812.1</b>
NT	1116	1.7% <b>453.5</b>
ACT	3792	5.7% <b>919.0</b>
AUS	66428	100.0% <b>268.9</b>

**Vaccination rates:**
**Vaccinated participants:**

	COVID-19 (%)	Influenza (%)
<5 years		40.9
5-17 years	0.4	29.6
18-64 years	55.4	62.6
65+ years	82.3	84.6
Working with patients	81.6	71.6
Aboriginal and/or Torres Strait Islander	38.5	52.7
<b>Vaccinated overall (%)</b>	<b>58.1</b>	<b>66.2</b>



\* Data are age standardised in this chart

^2021 Influenza vaccination data not available until 04/04/21 due to low counts

