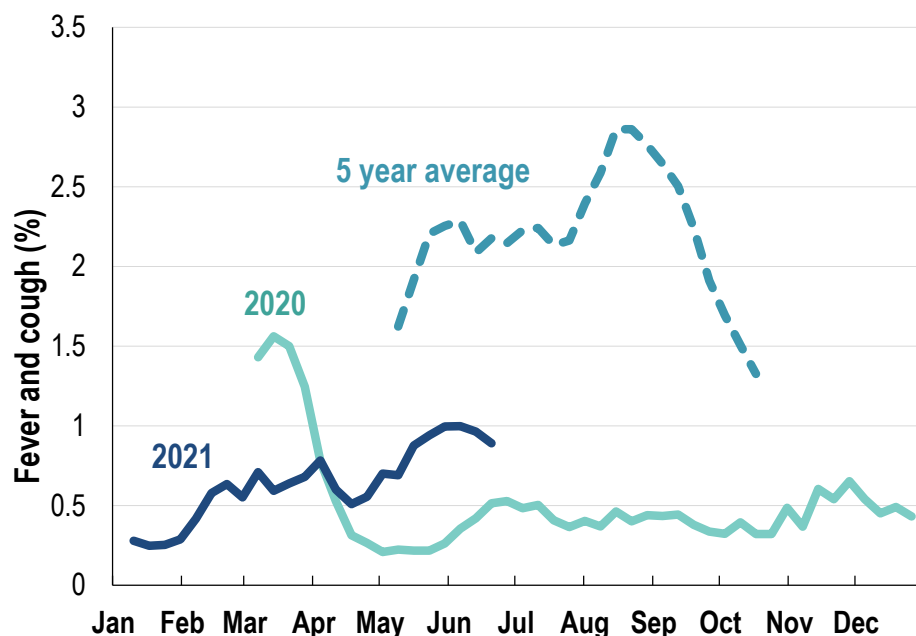


This week influenza-like illness activity is low 66,230 participants this week

Influenza-like illness activity*:

*Influenza-like illness activity is defined as fever & cough for this report

0.9% this week: flu-like illness activity is low

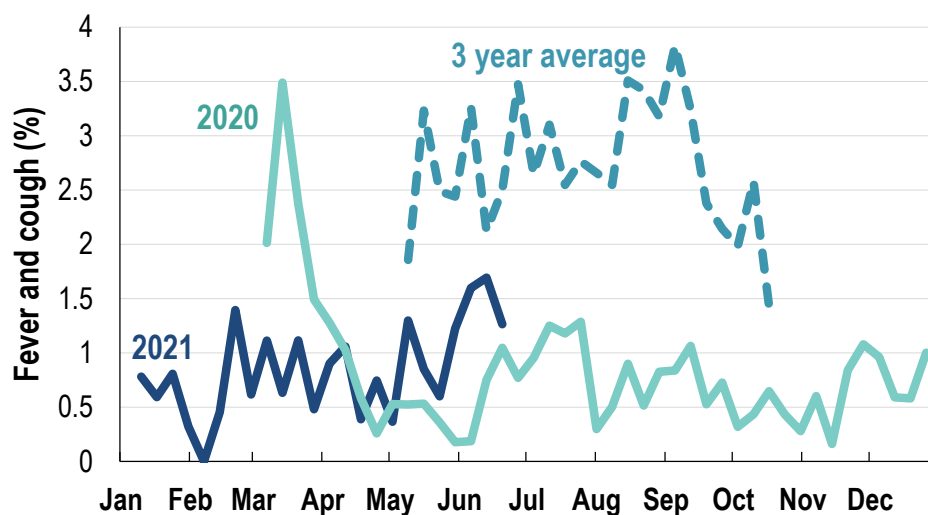


*5 year average is calculated using 2015, 2016, 2017, 2018 and 2019 data

*Data are age standardised in this chart

Influenza-like illness activity among Aboriginal and Torres Strait Islander participants

1.3% this week: flu-like illness activity is low



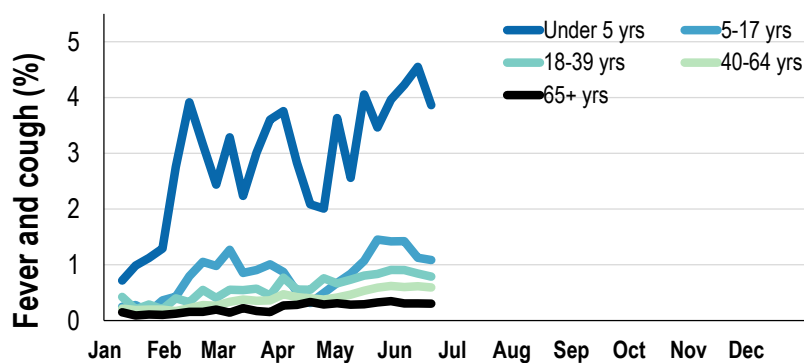
*Average Number of Aboriginal and Torres Strait Islander Participants = 701

*3 year average is calculated using 2017, 2018 and 2019 data

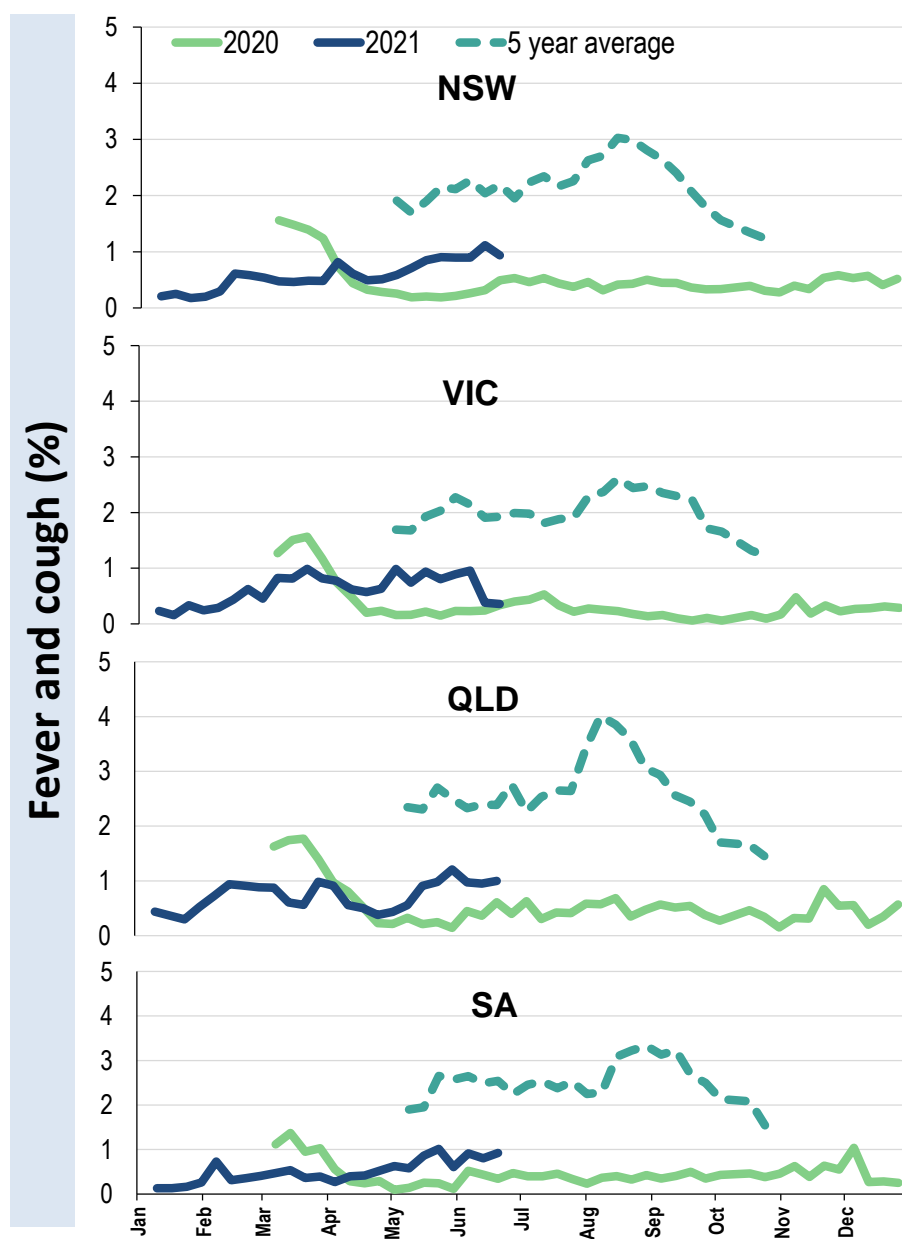
Influenza-like illness severity: <i>50.7% of participants with fever and cough sought medical advice this week</i>		
Influenza-like illness Severity	Week ending 20 June 2021	Week ending 13 June 2021
	number (%)	number (%)
Number of participants	66230 (100%)	66428 (100%)
Fever & cough	416 (0.6%)	438 (0.7%)
Fever, cough & time-off normal duties	286 (0.4%)	302 (0.5%)
Fever, cough & 3 or more days off work/normal duties	157 (0.2%)	170 (0.3%)
Number of participants with fever and cough	416 (100%)	438 (100%)
*Sought medical advice for fever and cough	211 (50.7%)	216 (49.3%)
Admitted to hospital	4 (1%)	3 (0.7%)
Tested for influenza	47 (11.3%)	44 (10%)
Tested, result positive for influenza	1 (0.2%)	3 (0.7%)
Tested for coronavirus (COVID-19)	180 (43.3%)	192 (43.8%)
Tested, result positive for coronavirus (COVID-19)	2 (0.5%)	0 (0%)

*Includes those who sought medical advice from a general practitioner, COVID-19 clinic, emergency department, or were admitted to hospital for fever & cough

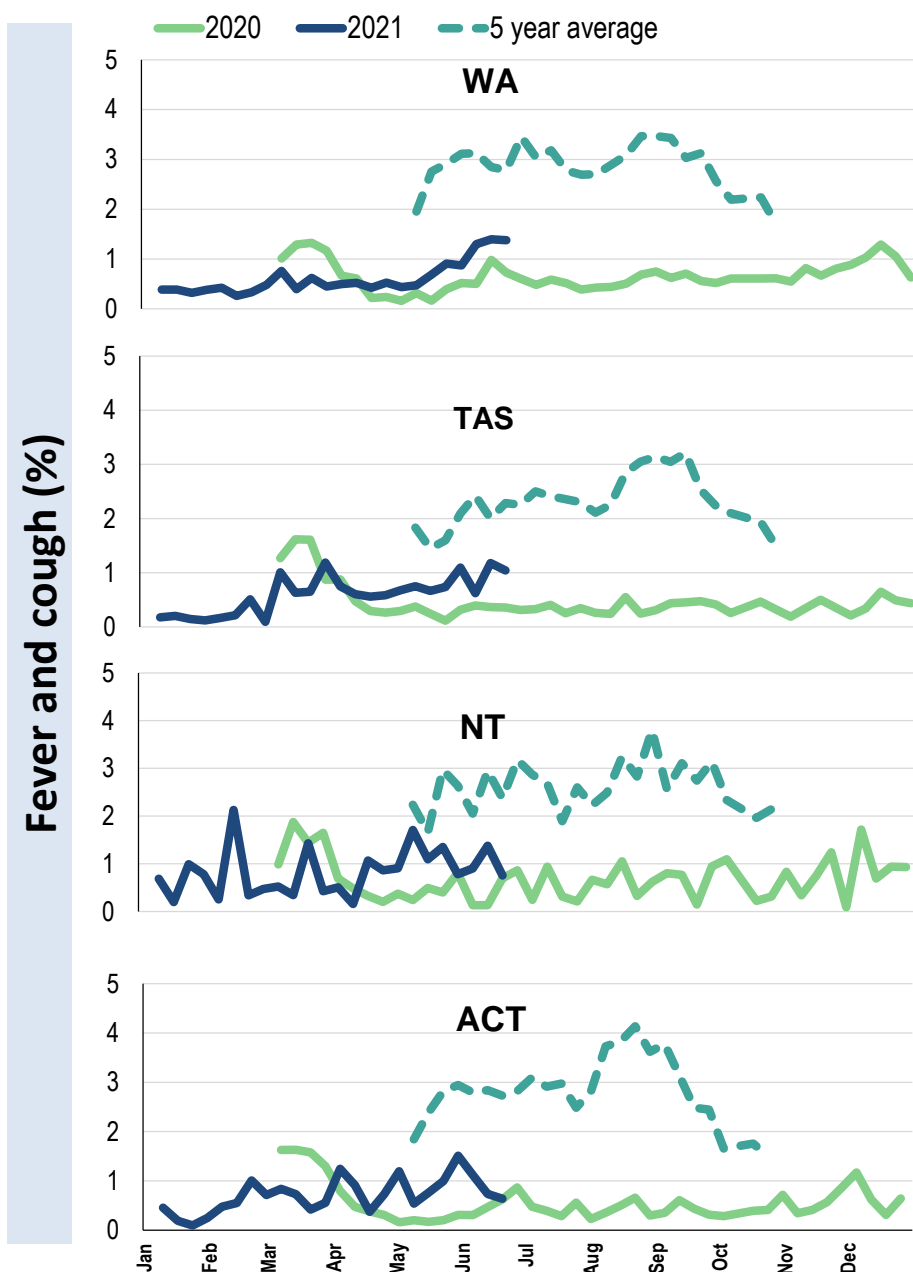
Influenza-like illness activity by age group (Australia):



Influenza-like illness activity by state/territory (age standardised):



Influenza-like illness activity by state/territory (age standardised):

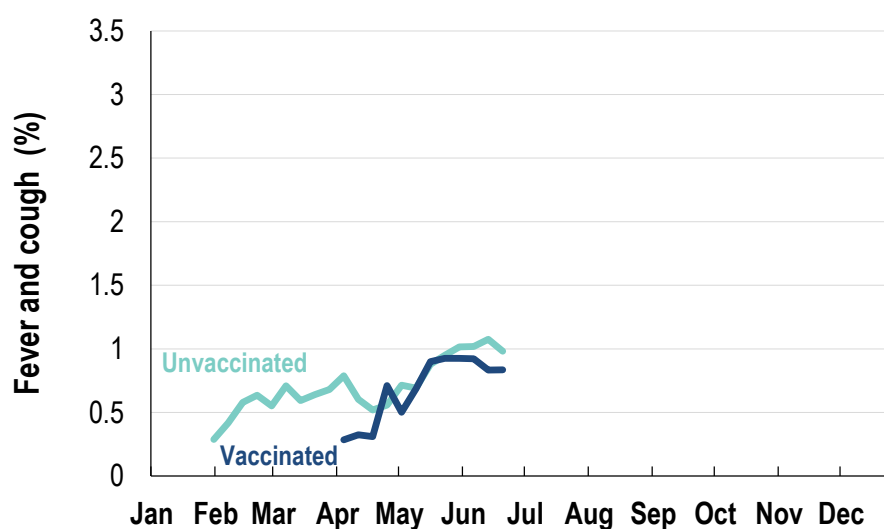


Participation:
66,230 participants (66,428 last week)

State	Participants	% Rate/100,000 population
NSW	22968	34.7% 290.9
VIC	13334	20.1% 209.7
QLD	8176	12.3% 165.2
SA	5740	8.7% 332.4
WA	6758	10.2% 261.2
TAS	4296	6.5% 823.0
NT	1134	1.7% 460.8
ACT	3824	5.8% 926.8
AUS	66230	100.0% 268.1

Vaccination rates:
Vaccinated participants:

	COVID-19 (%)	Influenza (%)
<5 years		43.7
5-17 years	0.4	31.1
18-64 years	58.9	64.7
65+ years	85.4	86.1
Working with patients	82.7	74.6
Aboriginal and/or Torres Strait Islander	41.6	56.0
Vaccinated overall (%)	61.1	68.1



* Data are age standardised in this chart

^2021 Influenza vaccination data not available until 04/04/21 due to low counts

