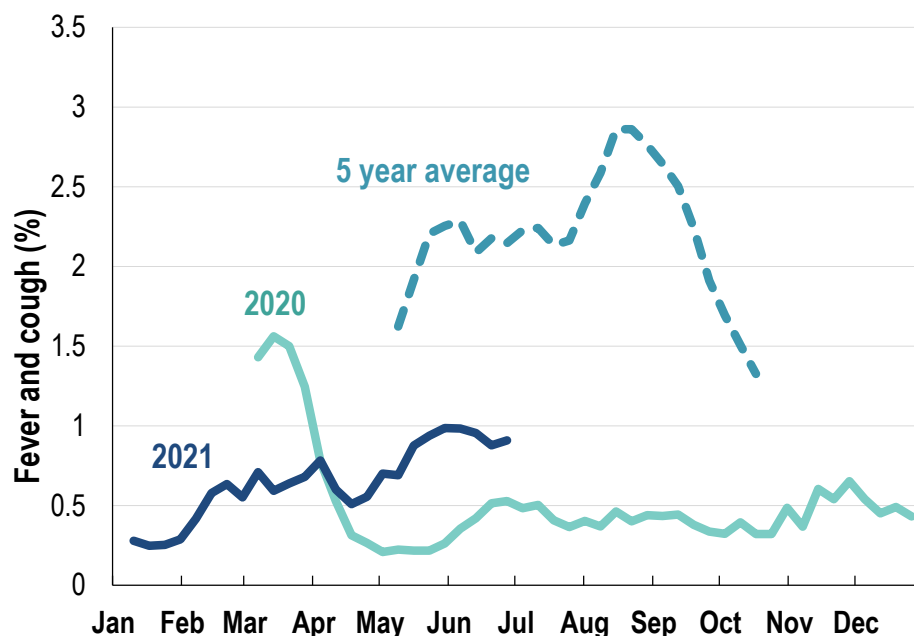


This week influenza-like illness activity is low 65,876 participants this week

Influenza-like illness activity*:

*Influenza-like illness activity is defined as fever & cough for this report

0.9% this week: flu-like illness activity is low

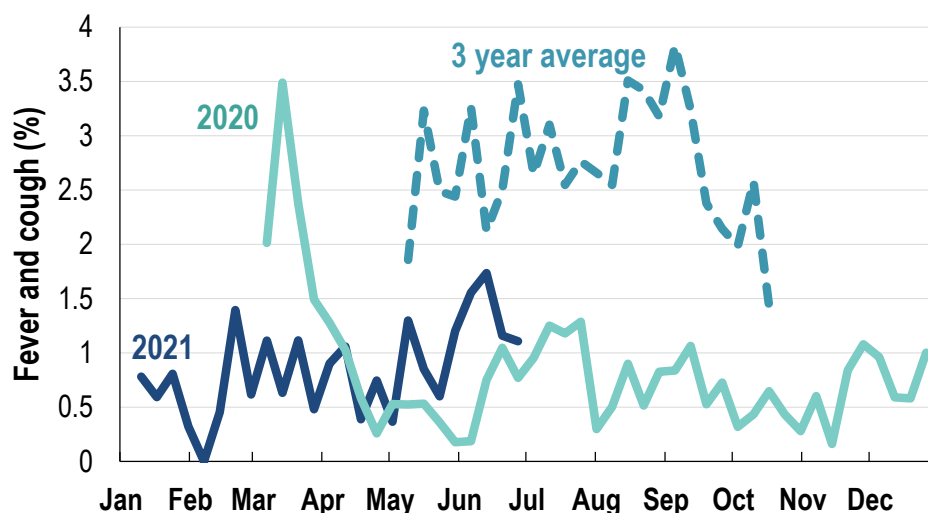


*5 year average is calculated using 2015, 2016, 2017, 2018 and 2019 data

[^] Data are age standardised in this chart

Influenza-like illness activity among Aboriginal and Torres Strait Islander participants

1.1% this week: flu-like illness activity is low



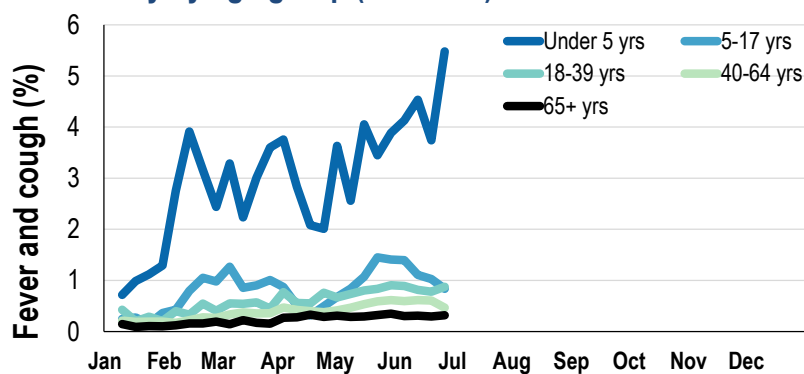
*Average Number of Aboriginal and Torres Strait Islander Participants = 708

[^] 3 year average is calculated using 2017, 2018 and 2019 data

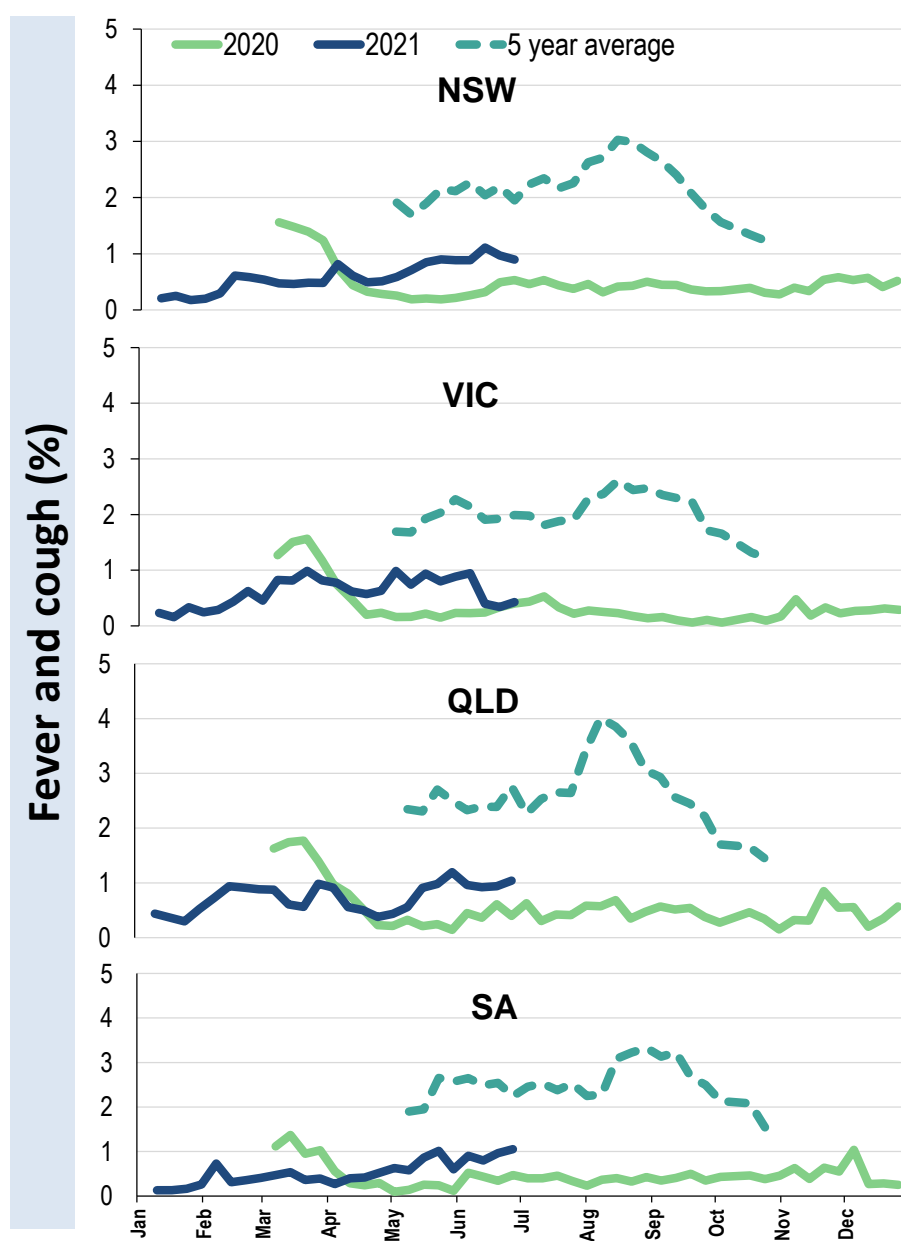
Influenza-like illness severity: <i>47.6% of participants with fever and cough sought medical advice this week</i>		
Influenza-like illness Severity	Week ending 27 June 2021 number (%)	Week ending 20 June 2021 number (%)
Number of participants	65876 (100%)	66230 (100%)
Fever & cough	391 (0.6%)	415 (0.6%)
Fever, cough & time-off normal duties	259 (0.4%)	305 (0.5%)
Fever, cough & 3 or more days off work/normal duties	142 (0.2%)	180 (0.3%)
Number of participants with fever and cough	391 (100%)	415 (100%)
*Sought medical advice for fever and cough	186 (47.6%)	230 (55.4%)
Admitted to hospital	7 (1.8%)	6 (1.4%)
Tested for influenza	36 (9.2%)	57 (13.7%)
Tested, result positive for influenza	3 (0.8%)	2 (0.5%)
Tested for coronavirus (COVID-19)	168 (43%)	201 (48.4%)
Tested, result positive for coronavirus (COVID-19)	0 (0%)	2 (0.5%)

*Includes those who sought medical advice from a general practitioner, COVID-19 clinic, emergency department, or were admitted to hospital for fever & cough

Influenza-like illness activity by age group (Australia):



Influenza-like illness activity by state/territory (age standardised):



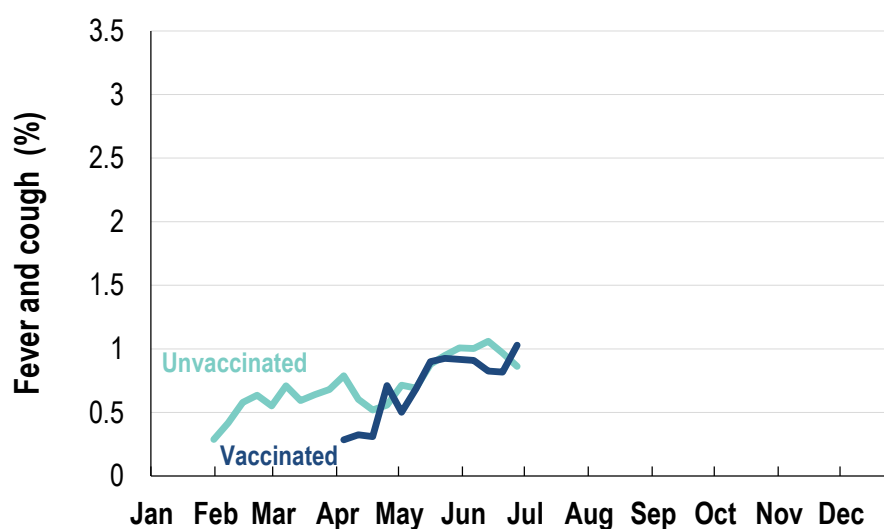


Participation:
65,876 participants (66,230 last week)

State	Participants	%	Rate/100,000 population
NSW	23230	35.3%	294.2
VIC	13141	19.9%	206.7
QLD	7979	12.1%	161.2
SA	5783	8.8%	334.9
WA	6785	10.3%	262.3
TAS	4260	6.5%	816.1
NT	983	1.5%	399.4
ACT	3715	5.6%	900.4
AUS	65876	100.0%	266.7

Vaccination rates:
Vaccinated participants:

	COVID-19 (%)	Influenza (%)
<5 years		47.0
5-17 years	0.5	32.5
18-64 years	61.9	66.6
65+ years	87.7	87.4
Working with patients	84.8	77.5
Aboriginal and/or Torres Strait Islander	43.8	58.5
Vaccinated overall (%)	63.8	69.9



* Data are age standardised in this chart

^2021 Influenza vaccination data not available until 04/04/21 due to low counts

