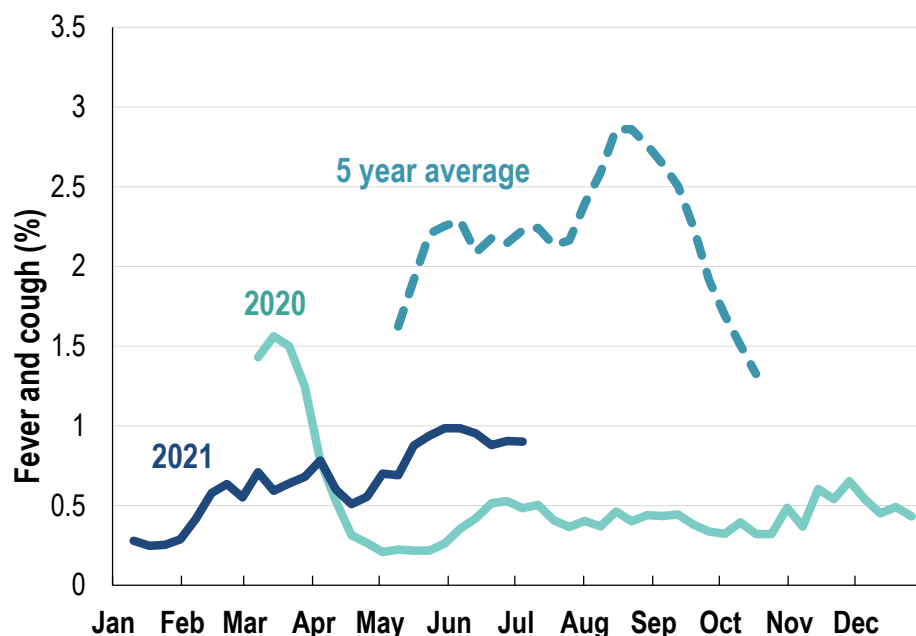


This week influenza-like illness activity is low 65,527 participants this week

Influenza-like illness activity*:

*Influenza-like illness activity is defined as fever & cough for this report

0.9% this week: flu-like illness activity is low

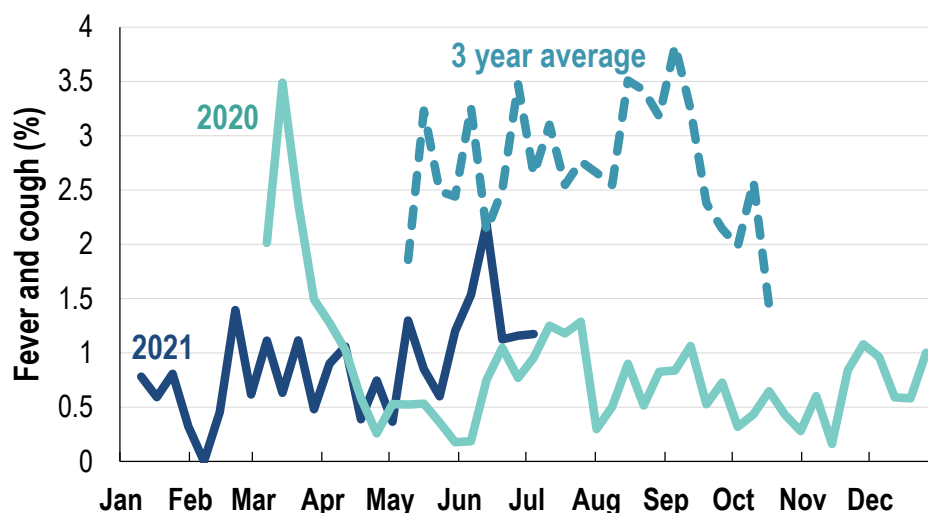


*5 year average is calculated using 2015, 2016, 2017, 2018 and 2019 data

*Data are age standardised in this chart

Influenza-like illness activity among Aboriginal and Torres Strait Islander participants

1.2% this week: flu-like illness activity is low



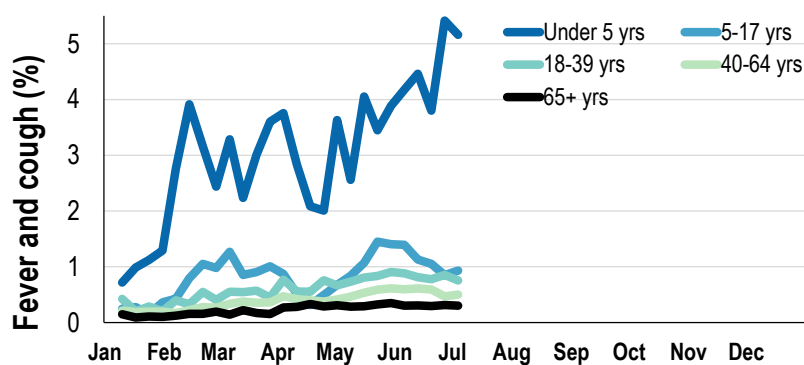
*Average Number of Aboriginal and Torres Strait Islander Participants = 711

*3 year average is calculated using 2017, 2018 and 2019 data

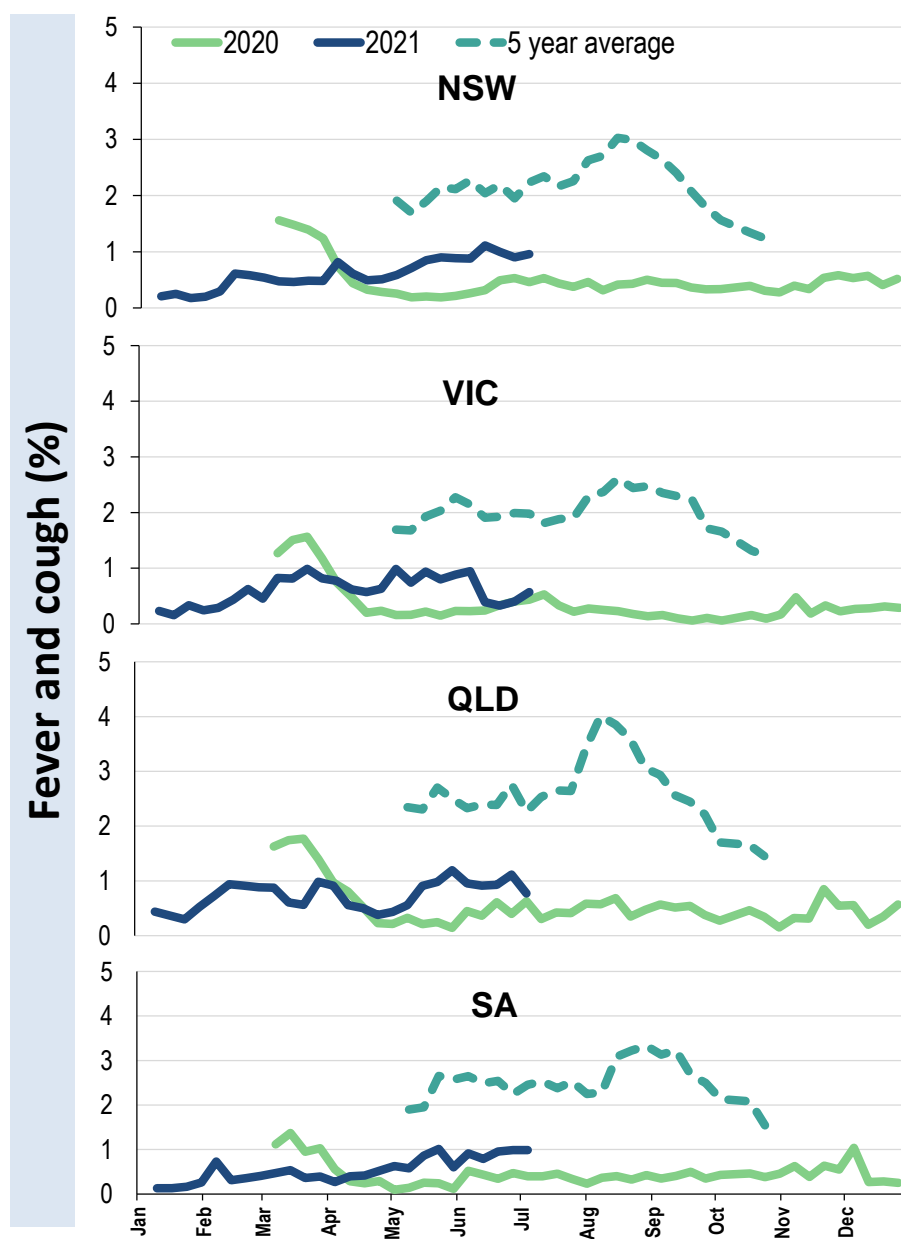
Influenza-like illness severity: <i>57.3% of participants with fever and cough sought medical advice this week</i>		
Influenza-like illness Severity	Week ending 04 July 2021 number (%)	Week ending 27 June 2021 number (%)
Number of participants	65527 (100%)	65876 (100%)
Fever & cough	384 (0.6%)	390 (0.6%)
Fever, cough & time-off normal duties	256 (0.4%)	273 (0.4%)
Fever, cough & 3 or more days off work/normal duties	152 (0.2%)	163 (0.2%)
Number of participants with fever and cough	384 (100%)	390 (100%)
*Sought medical advice for fever and cough	220 (57.3%)	206 (52.8%)
Admitted to hospital	3 (0.8%)	7 (1.8%)
Tested for influenza	49 (12.8%)	43 (11%)
Tested, result positive for influenza	2 (0.5%)	3 (0.8%)
Tested for coronavirus (COVID-19)	220 (57.3%)	196 (50.3%)
Tested, result positive for coronavirus (COVID-19)	0 (0%)	0 (0%)

*Includes those who sought medical advice from a general practitioner, COVID-19 clinic, emergency department, or were admitted to hospital for fever & cough

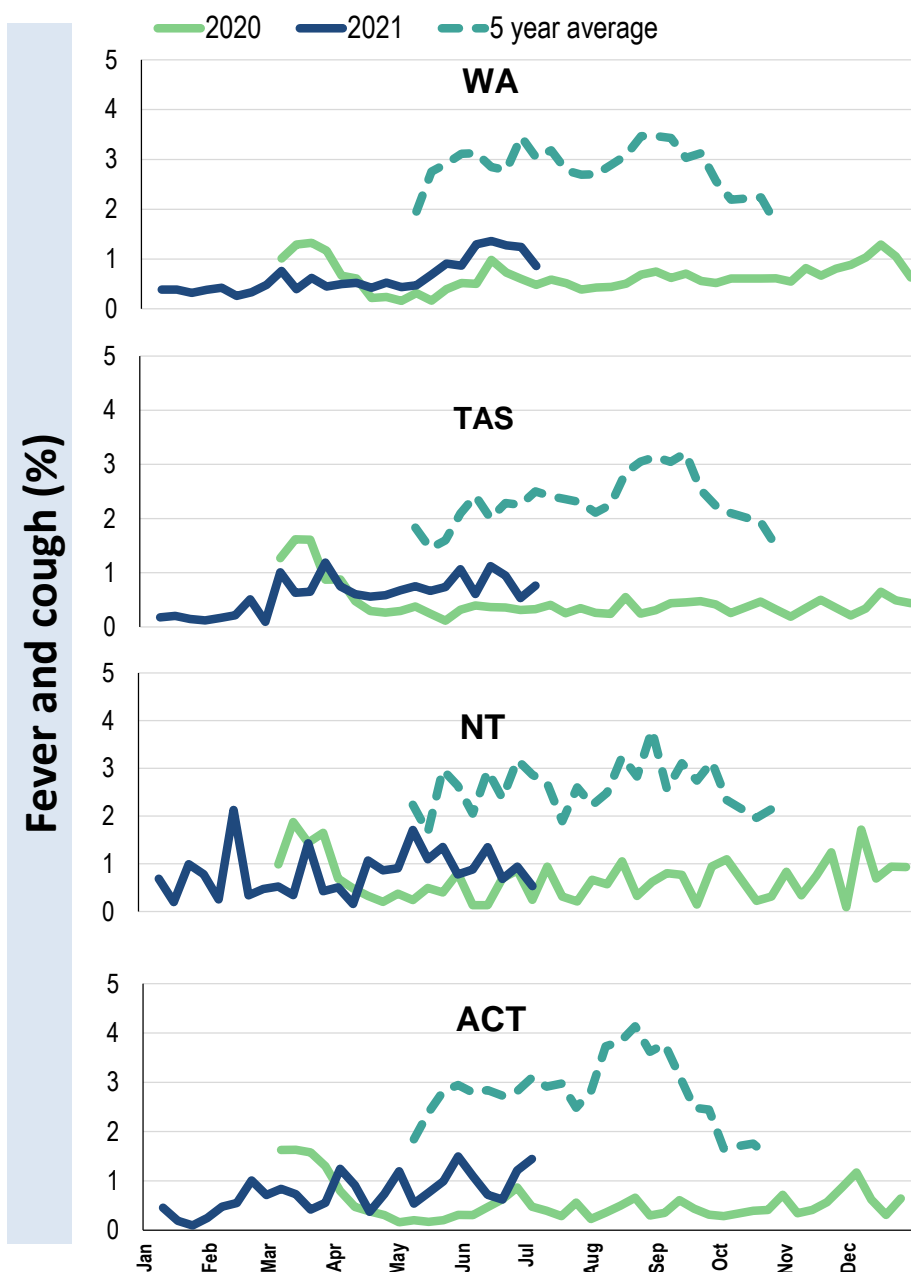
Influenza-like illness activity by age group (Australia):



Influenza-like illness activity by state/territory (age standardised):



Influenza-like illness activity by state/territory (age standardised):



Participation:
65,527 participants (65,876 last week)

State	Participants	% Rate/100,000 population
NSW	23120	35.3% 292.8
VIC	13050	19.9% 205.2
QLD	8087	12.3% 163.4
SA	5677	8.7% 328.7
WA	6595	10.1% 254.9
TAS	4170	6.4% 798.9
NT	1061	1.6% 431.1
ACT	3767	5.7% 913.0
AUS	65527	100.0% 265.3

Vaccination rates:
Vaccinated participants:

	COVID-19 (%)	Influenza (%)
<5 years		49.5
5-17 years	0.7	34.3
18-64 years	64.9	67.9
65+ years	89.6	88.1
Working with patients	86.3	79.6
Aboriginal and/or Torres Strait Islander	45.7	60.6
Vaccinated overall (%)	66.3	71.2



* Data are age standardised in this chart

^2021 Influenza vaccination data not available until 04/04/21 due to low counts

