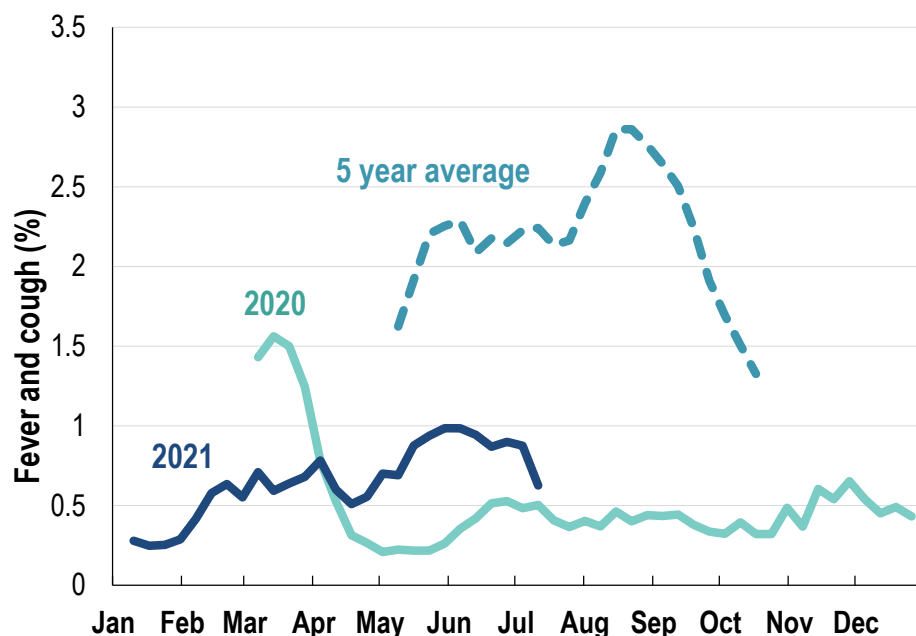


## This week influenza-like illness activity is low 65,982 participants this week

### Influenza-like illness activity\*:

\*Influenza-like illness activity is defined as fever & cough for this report

**0.6% this week: flu-like illness activity is low**

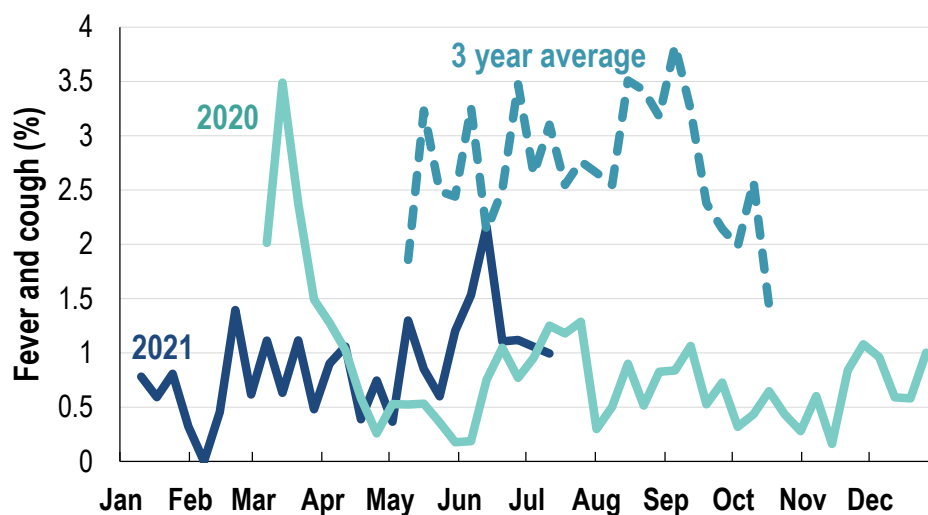


\*5 year average is calculated using 2015, 2016, 2017, 2018 and 2019 data

\*Data are age standardised in this chart

### Influenza-like illness activity among Aboriginal and Torres Strait Islander participants

**1% this week: flu-like illness activity is low**



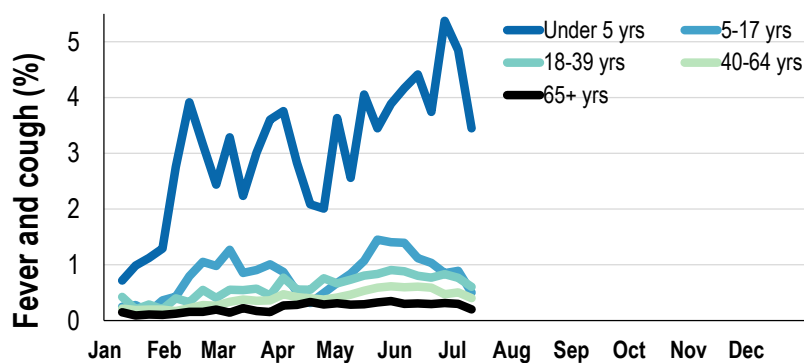
\*Average Number of Aboriginal and Torres Strait Islander Participants = 715

\*3 year average is calculated using 2017, 2018 and 2019 data

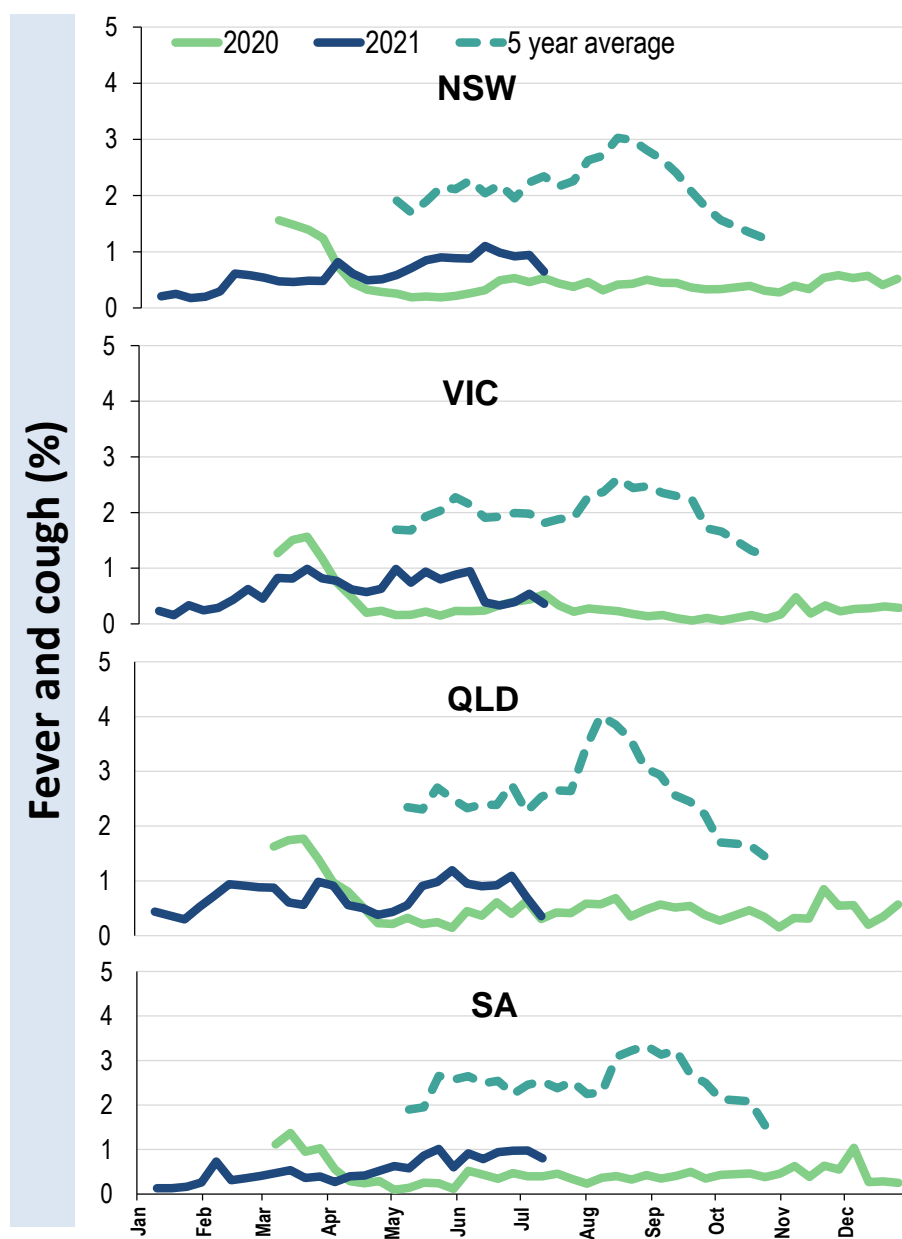
<b>Influenza-like illness severity:</b> <i>51.8% of participants with fever and cough sought medical advice this week</i>		
Influenza-like illness Severity	Week ending 11 July 2021 number (%)	Week ending 04 July 2021 number (%)
<b>Number of participants</b>	65982 (100%)	65527 (100%)
Fever & cough	280 (0.4%)	383 (0.6%)
Fever, cough & time-off normal duties	168 (0.3%)	268 (0.4%)
Fever, cough & 3 or more days off work/normal duties	95 (0.1%)	172 (0.3%)
<b>Number of participants with fever and cough</b>	280 (100%)	383 (100%)
*Sought medical advice for fever and cough	145 (51.8%)	229 (59.8%)
Admitted to hospital	3 (1.1%)	4 (1%)
Tested for influenza	22 (7.9%)	59 (15.4%)
Tested, result positive for influenza	2 (0.7%)	2 (0.5%)
Tested for coronavirus (COVID-19)	134 (47.9%)	241 (62.9%)
Tested, result positive for coronavirus (COVID-19)	0 (0%)	0 (0%)

\*Includes those who sought medical advice from a general practitioner, COVID-19 clinic, emergency department, or were admitted to hospital for fever & cough

**Influenza-like illness activity by age group (Australia):**



**Influenza-like illness activity by state/territory (age standardised):**





**Participation:**
**65,982 participants (65,527 last week)**

State	Participants	% Rate/100,000 population
NSW	23411	35.5% <b>296.5</b>
VIC	13224	20.0% <b>208.0</b>
QLD	8258	12.5% <b>166.9</b>
SA	5711	8.7% <b>330.7</b>
WA	6444	9.8% <b>249.1</b>
TAS	4110	6.2% <b>787.4</b>
NT	1064	1.6% <b>432.3</b>
ACT	3760	5.7% <b>911.3</b>
AUS	65982	100.0% <b>267.1</b>

**Vaccination rates:**
**Vaccinated participants:**

	COVID-19 (%)	Influenza (%)
<5 years		50.6
5-17 years	0.8	34.5
18-64 years	67.3	68.9
65+ years	90.9	88.9
Working with patients	87.4	81.2
Aboriginal and/or Torres Strait Islander	47.2	61.6
<b>Vaccinated overall (%)</b>	<b>68.1</b>	<b>72.0</b>



\* Data are age standardised in this chart

^2021 Influenza vaccination data not available until 04/04/21 due to low counts

