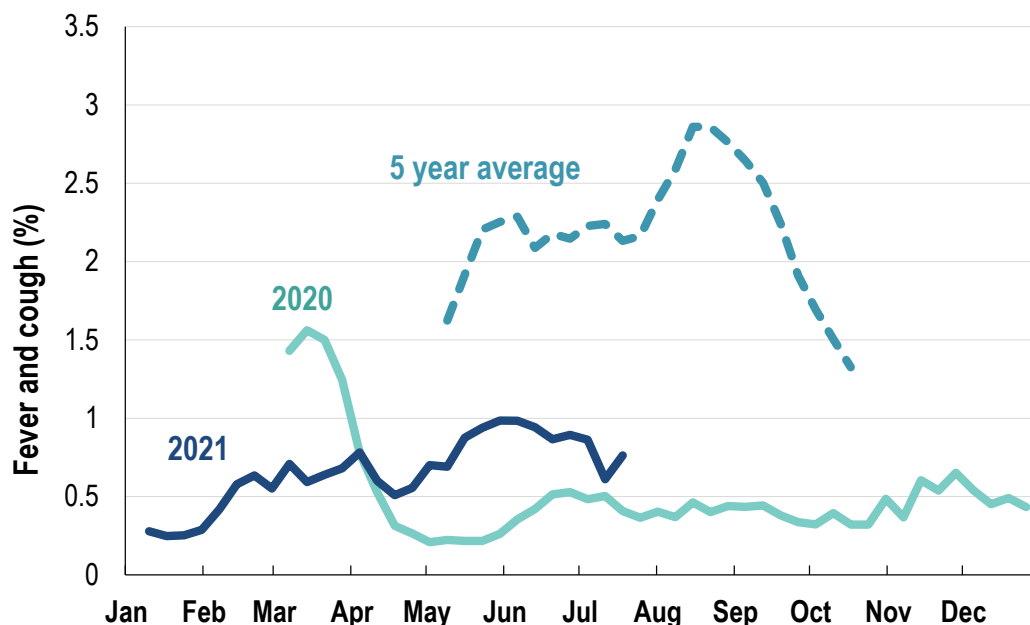


This week influenza-like illness activity is low 66,540 participants this week

Influenza-like illness activity*:

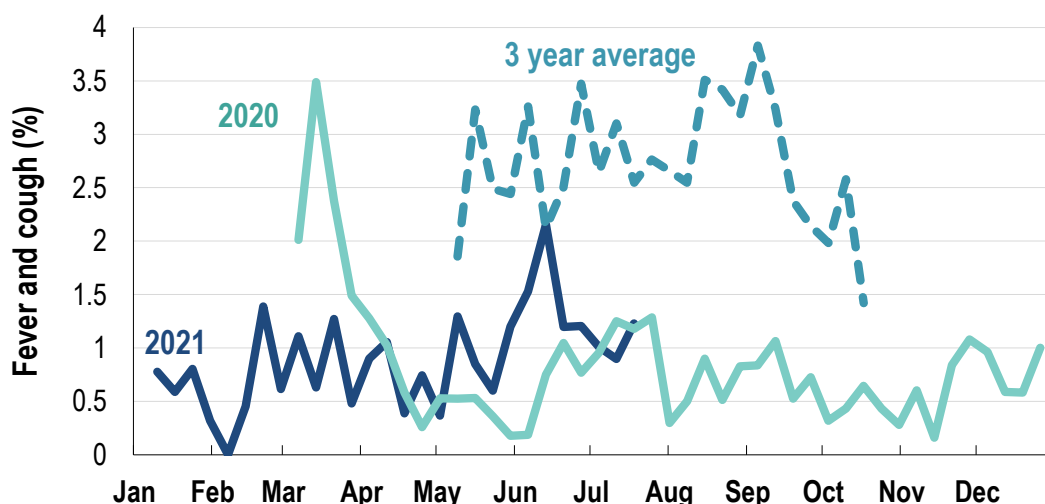
*Influenza-like illness activity is defined as fever & cough for this report

0.8% this week: flu-like illness activity is low



*5 year average is calculated using 2015, 2016, 2017, 2018 and 2019 data
^ Data are age standardised in this chart

Influenza-like illness activity among Aboriginal and Torres Strait Islander participants 1.2% this week: flu-like illness activity is low

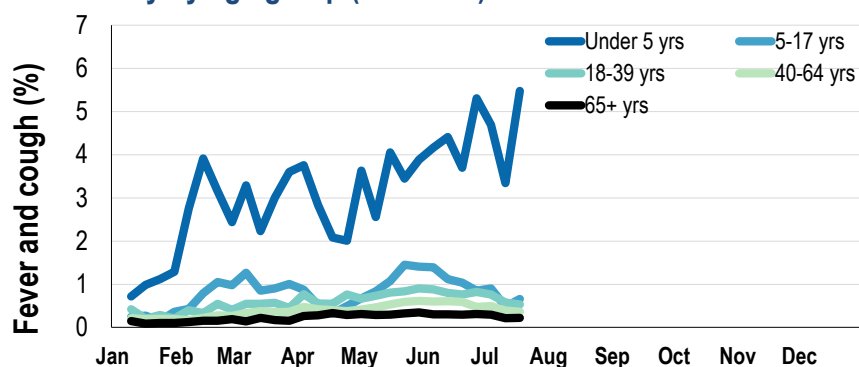


*Average Number of Aboriginal and Torres Strait Islander Participants = 723
^3 year average is calculated using 2017, 2018 and 2019 data

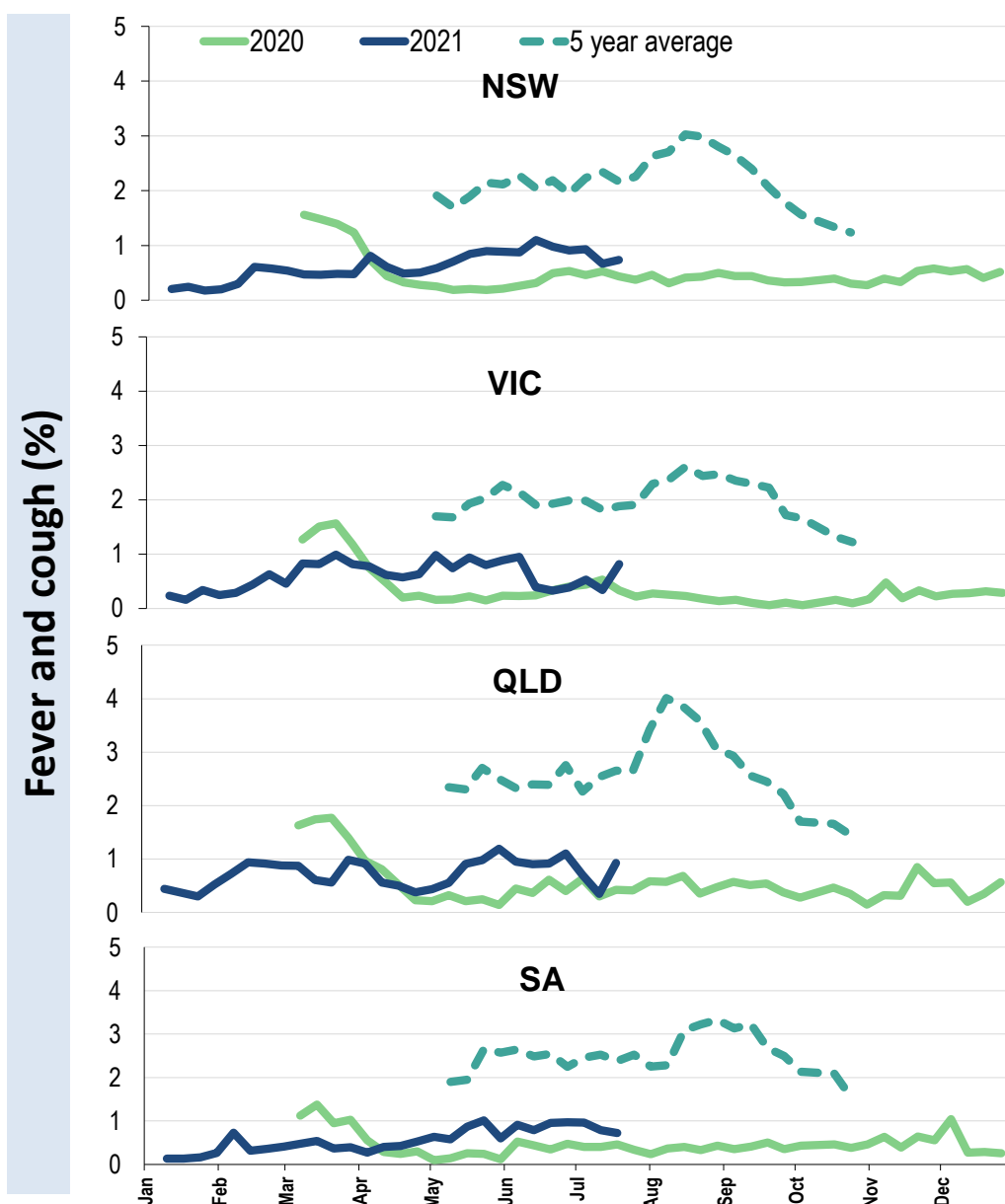
Influenza-like illness severity: <i>56.6% of participants with fever and cough sought medical advice this week</i>		
Influenza-like illness Severity	Week ending 18 July 2021	Week ending 11 July 2021
	number (%)	number (%)
Number of participants	66540 (100%)	65982 (100%)
Fever & cough	302 (0.5%)	280 (0.4%)
Fever, cough & time-off normal duties	201 (0.3%)	179 (0.3%)
Fever, cough & 3 or more days off work/normal duties	122 (0.2%)	106 (0.2%)
Number of participants with fever and cough	302 (100%)	280 (100%)
*Sought medical advice for fever and cough	171 (56.6%)	156 (55.7%)
Admitted to hospital	3 (1%)	3 (1.1%)
Tested for influenza	18 (6%)	31 (11.1%)
Tested, result positive for influenza	1 (0.3%)	3 (1.1%)
Tested for coronavirus (COVID-19)	152 (50.3%)	150 (53.6%)
Tested, result positive for coronavirus (COVID-19)	0 (0%)	0 (0%)

*Includes those who sought medical advice from a general practitioner, COVID-19 clinic, emergency department, or were admitted to hospital for fever & cough

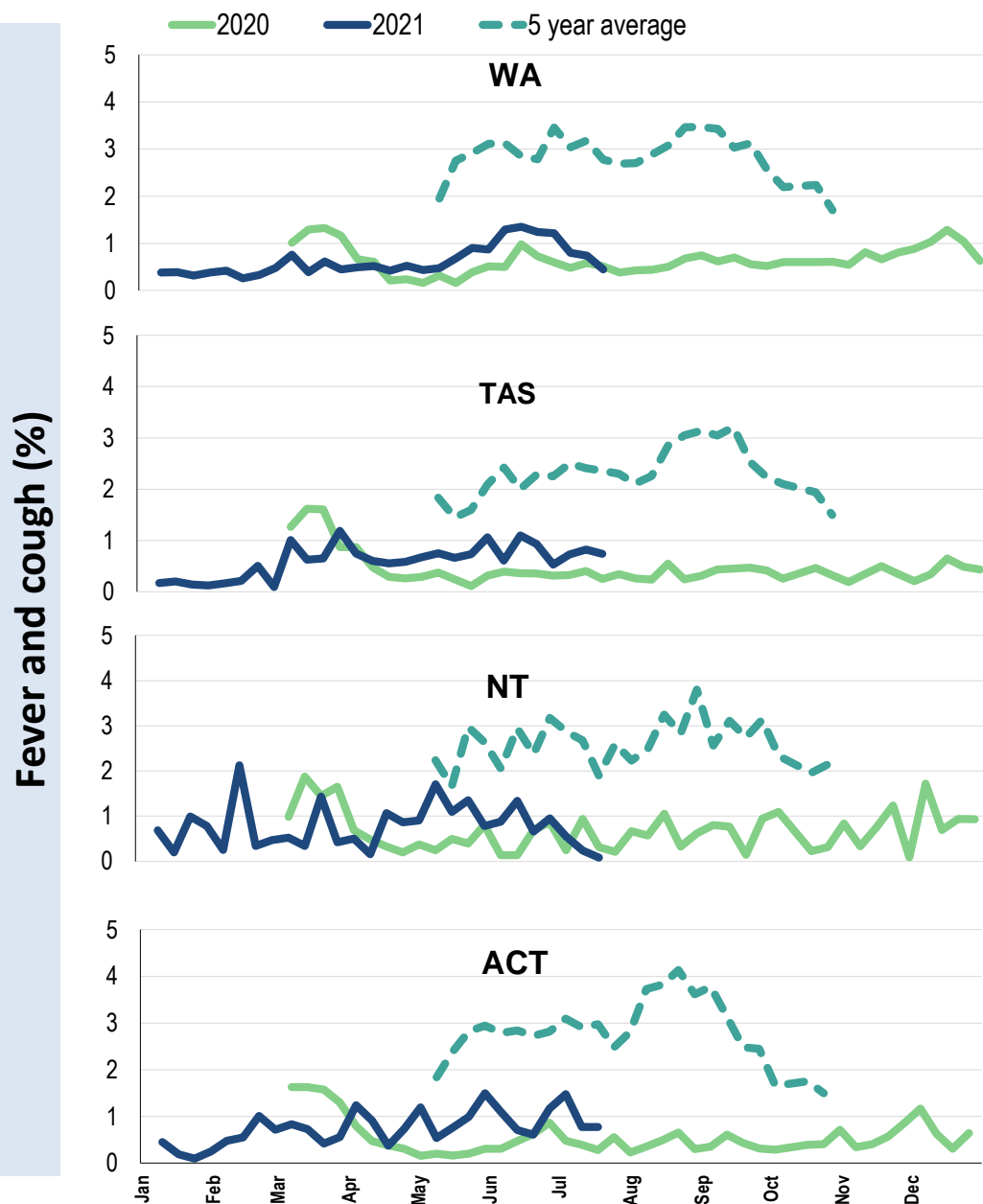
Influenza-like illness activity by age group (Australia):



Influenza-like illness activity by state/territory (age standardised):



Influenza-like illness activity by state/territory (age standardised):

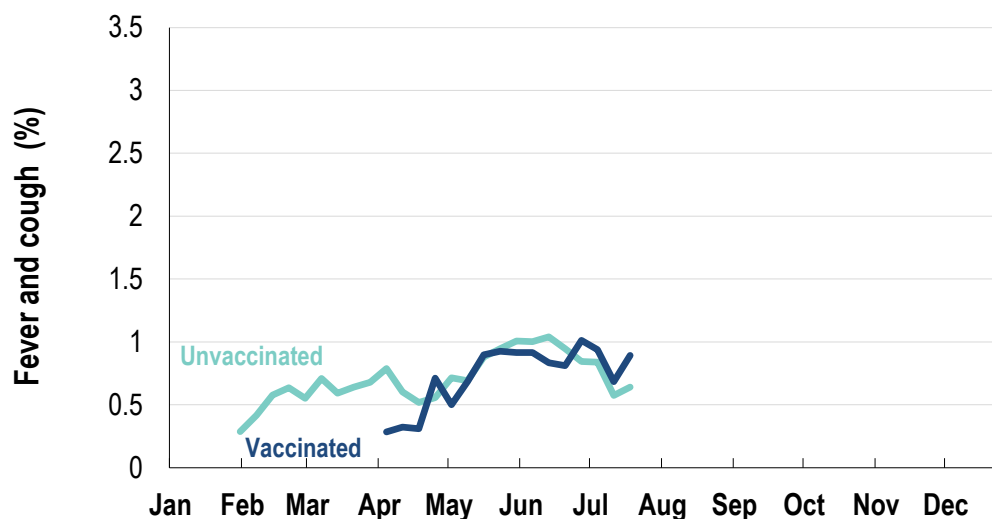


Participation:
66,540 participants (65,982 last week)

State	Participants	%	Rate/100,000 population
NSW	23437	35.2%	296.8
VIC	13393	20.1%	210.6
QLD	8227	12.4%	166.2
SA	5715	8.6%	330.9
WA	6671	10.0%	257.9
TAS	4247	6.4%	813.6
NT	1098	1.7%	446.2
ACT	3752	5.6%	909.4
AUS	66540	100.0%	269.4

Vaccination rates:
Vaccinated participants:

	COVID-19 vaccine		Influenza (%)
	At least 1 dose (%)	2 doses (%)	
<5 years			51.6
5-17 years	1.0	0.5	35.2
18-64 years	70.2	36.3	69.6
65+ years	92.0	38.8	89.3
Working with patients	89.0	70.3	82.0
Aboriginal and/or Torres Strait Islander	50.2	30.6	62.8
Vaccinated overall (%)	69.9	33.4	72.5



* Data are age standardised in this chart

*2021 Influenza vaccination data not available until 04/04/21 due to low counts

