

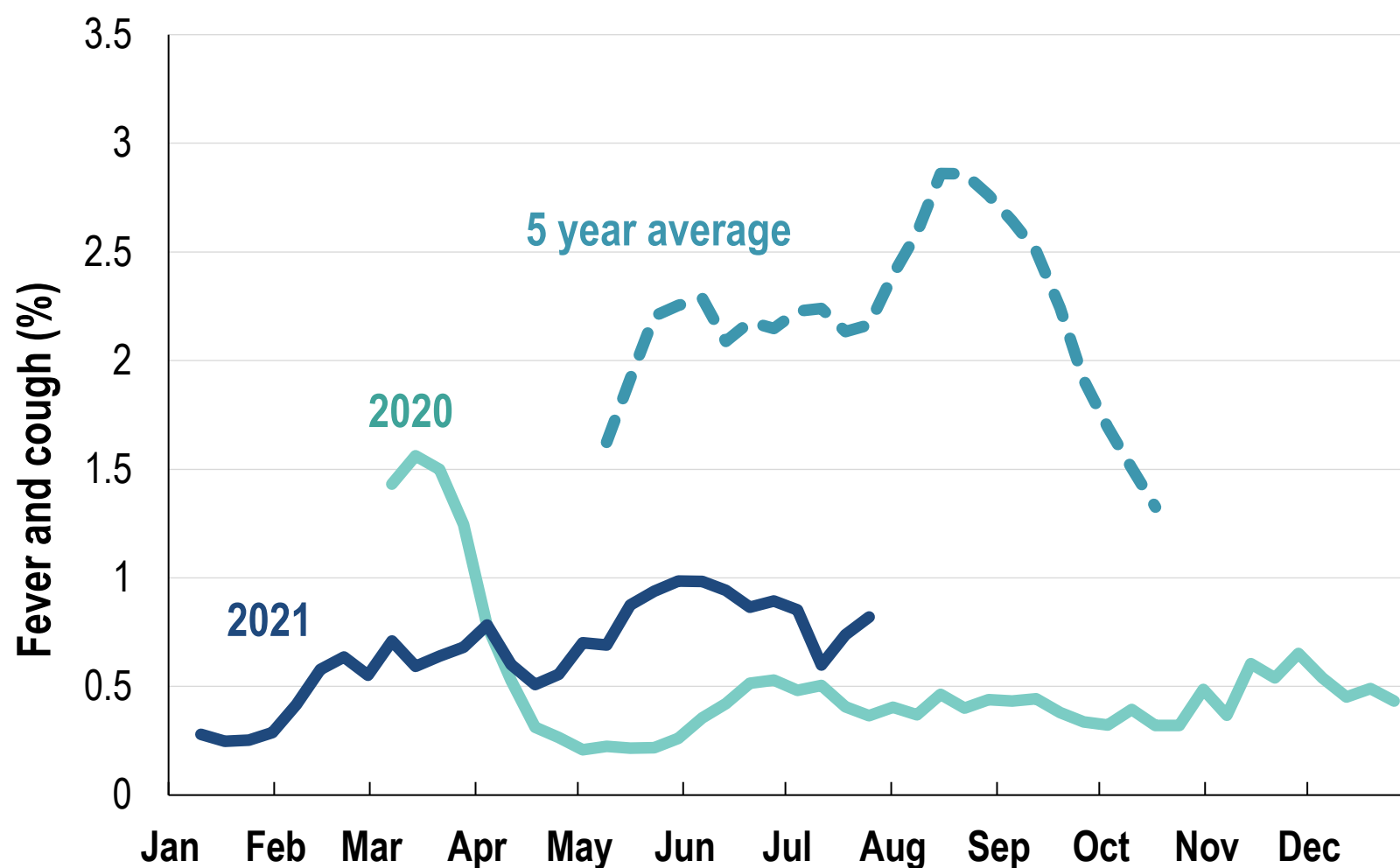


**This week influenza-like illness activity is low**  
**66,705 participants this week**

**Influenza-like illness activity\*:**

\*Influenza-like illness activity is defined as fever & cough for this report

**0.8% this week: flu-like illness activity is low**

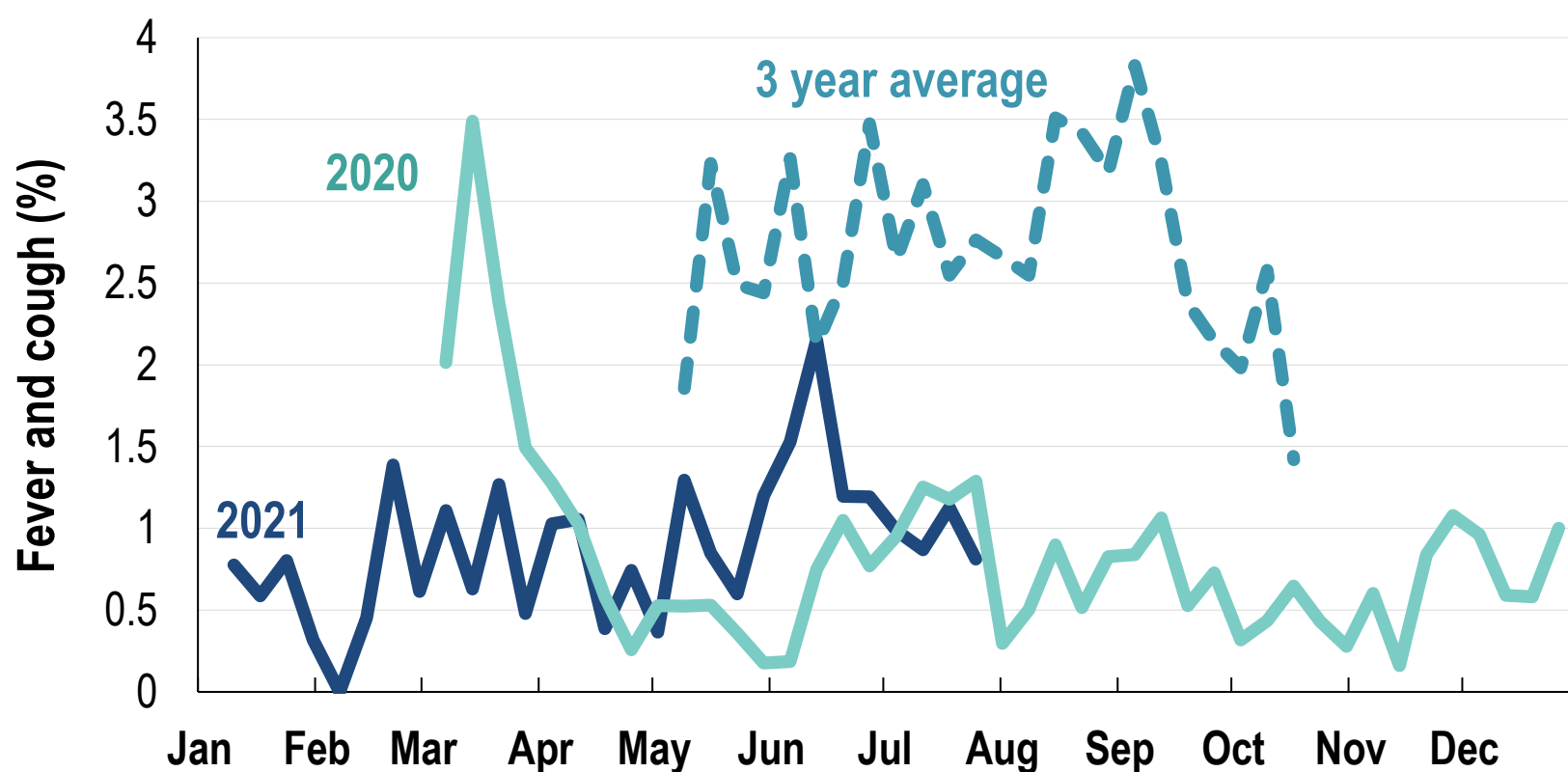


\*5 year average is calculated using 2015, 2016, 2017, 2018 and 2019 data

^ Data are age standardised in this chart

**Influenza-like illness activity among Aboriginal and Torres Strait Islander participants**

**0.8% this week: flu-like illness activity is low**



\*Average Number of Aboriginal and Torres Strait Islander Participants = 728

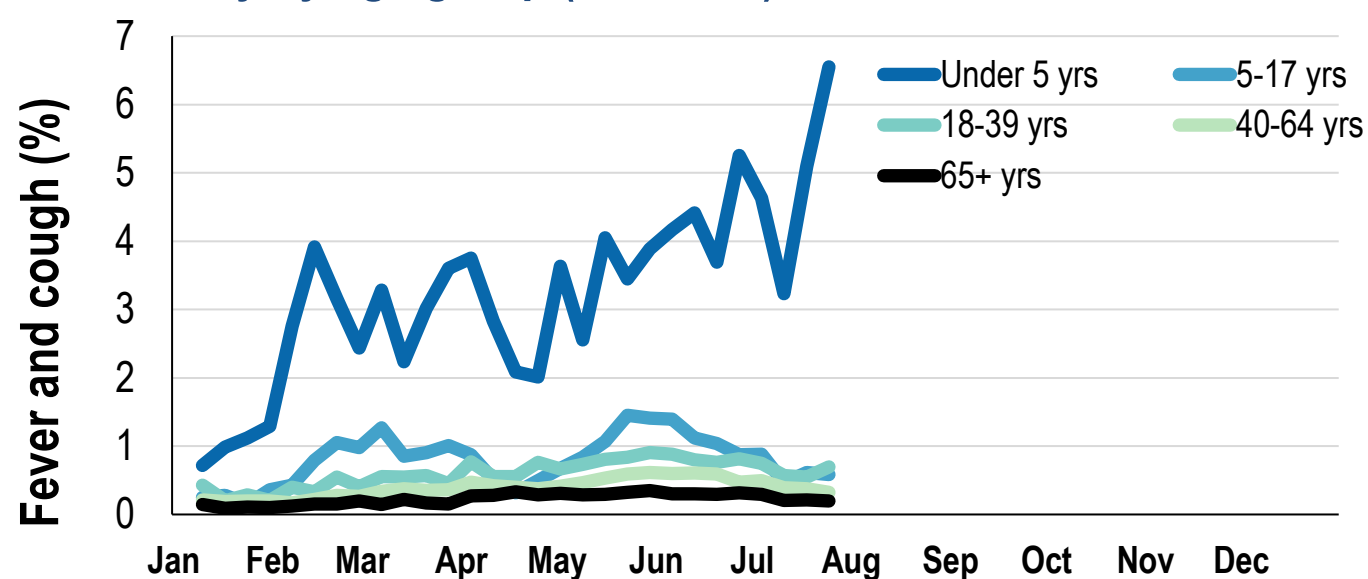
^3 year average is calculated using 2017, 2018 and 2019 data

<b>Influenza-like illness severity:</b> <i>59.2% of participants with fever and cough sought medical advice this week</i>		
Influenza-like illness Severity	Week ending 25 July 2021	Week ending 18 July 2021
	number (%)	number (%)
<b>Number of participants</b>	66705 (100%)	66540 (100%)
Fever & cough	306 (0.5%)	302 (0.5%)
Fever, cough & time-off normal duties	221 (0.3%)	213 (0.3%)
Fever, cough & 3 or more days off work/normal duties	130 (0.2%)	132 (0.2%)
<b>Number of participants with fever and cough</b>	306 (100%)	302 (100%)
*Sought medical advice for fever and cough	181 (59.2%)	183 (60.6%)
Admitted to hospital	3 (1%)	4 (1.3%)
Tested for influenza	27 (8.8%)	26 (8.6%)
Tested, result positive for influenza	2 (0.7%)	1 (0.3%)
Tested for coronavirus (COVID-19)	148 (48.4%)	177 (58.6%)
Tested, result positive for coronavirus (COVID-19)	0 (0%)	0 (0%)

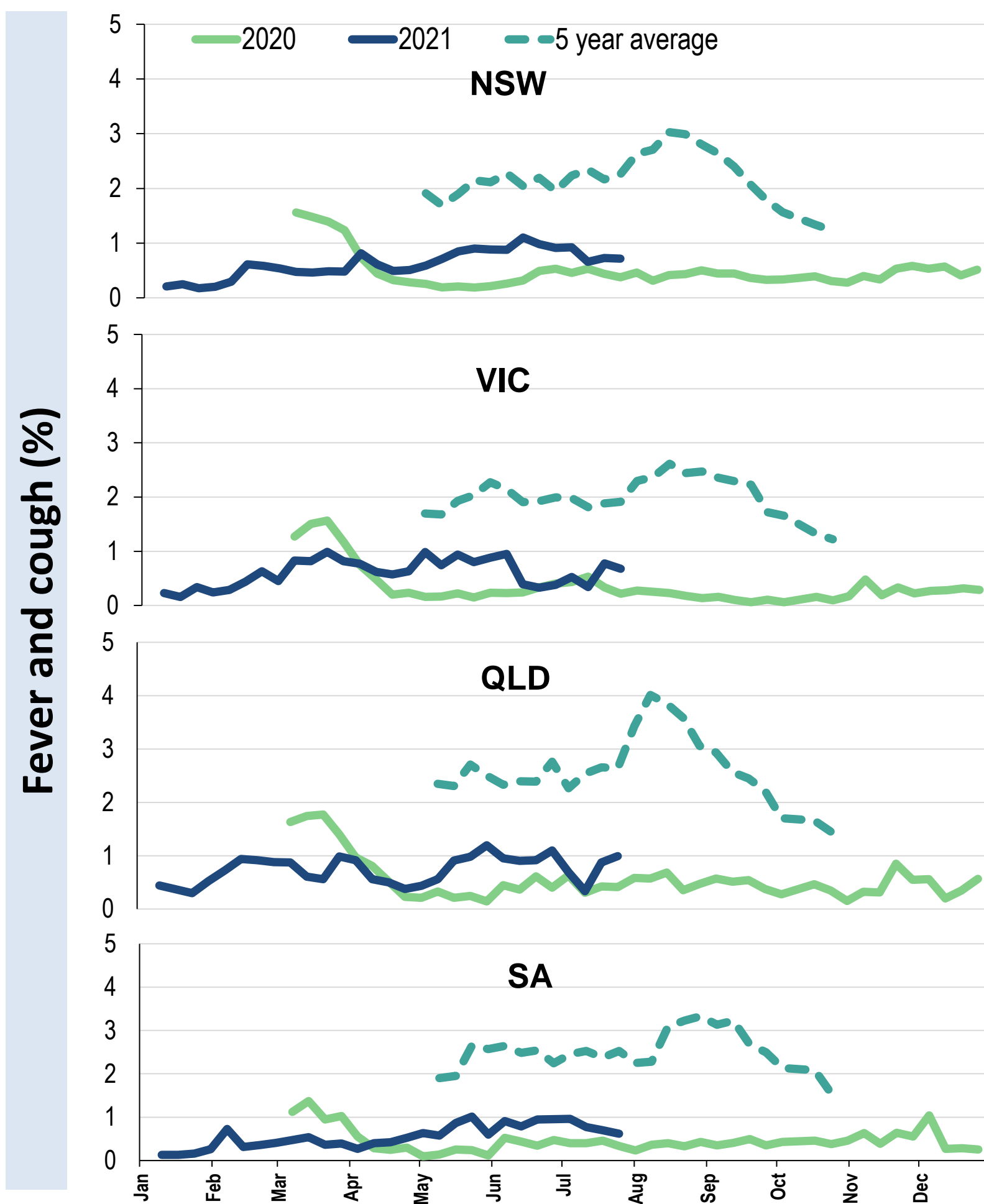
\*Includes those who sought medical advice from a general practitioner, COVID-19 clinic, emergency department, or were admitted to hospital for fever & cough



#### Influenza-like illness activity by age group (Australia):

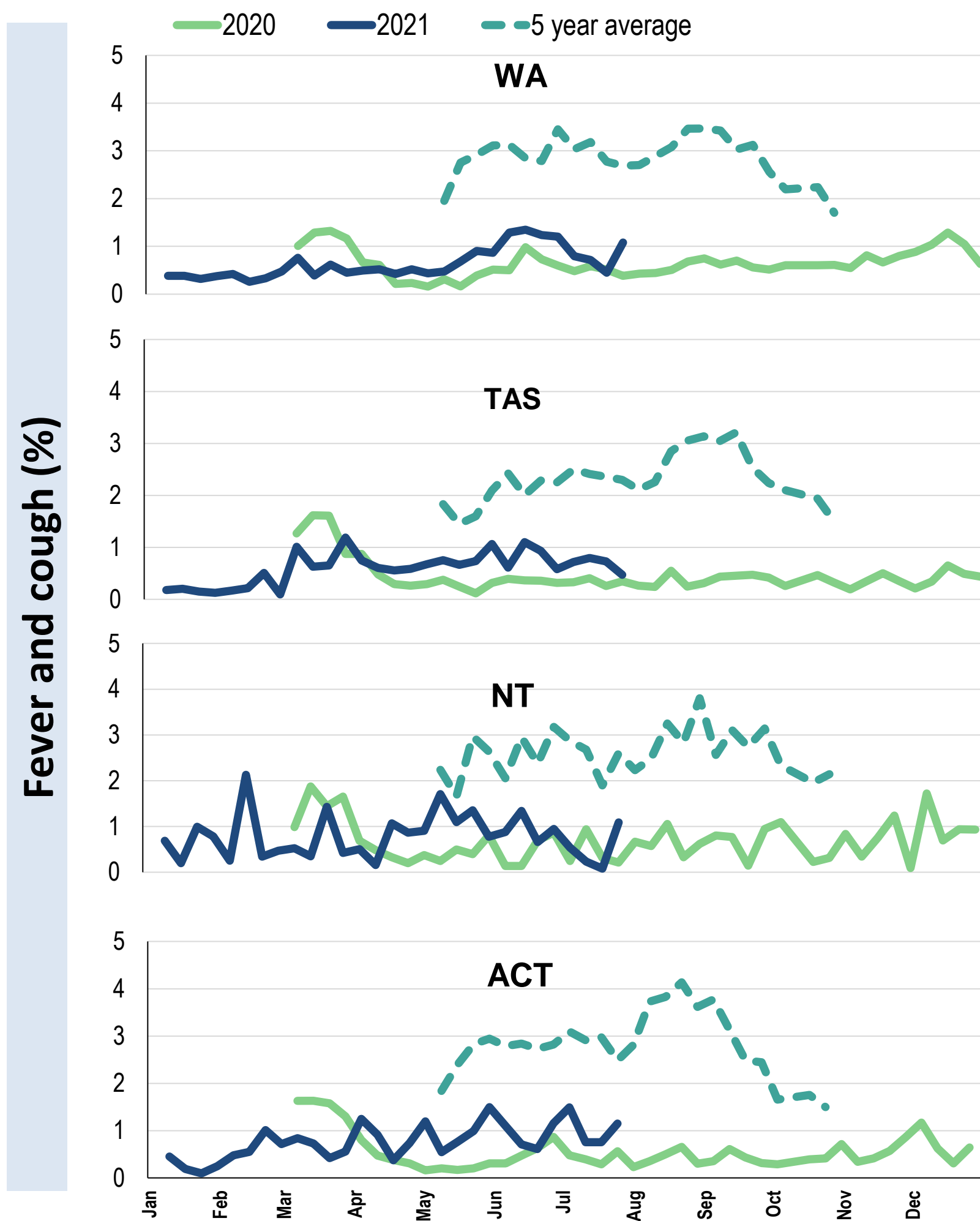


#### Influenza-like illness activity by state/territory (age standardised):





**Influenza-like illness activity by state/territory (age standardised):**

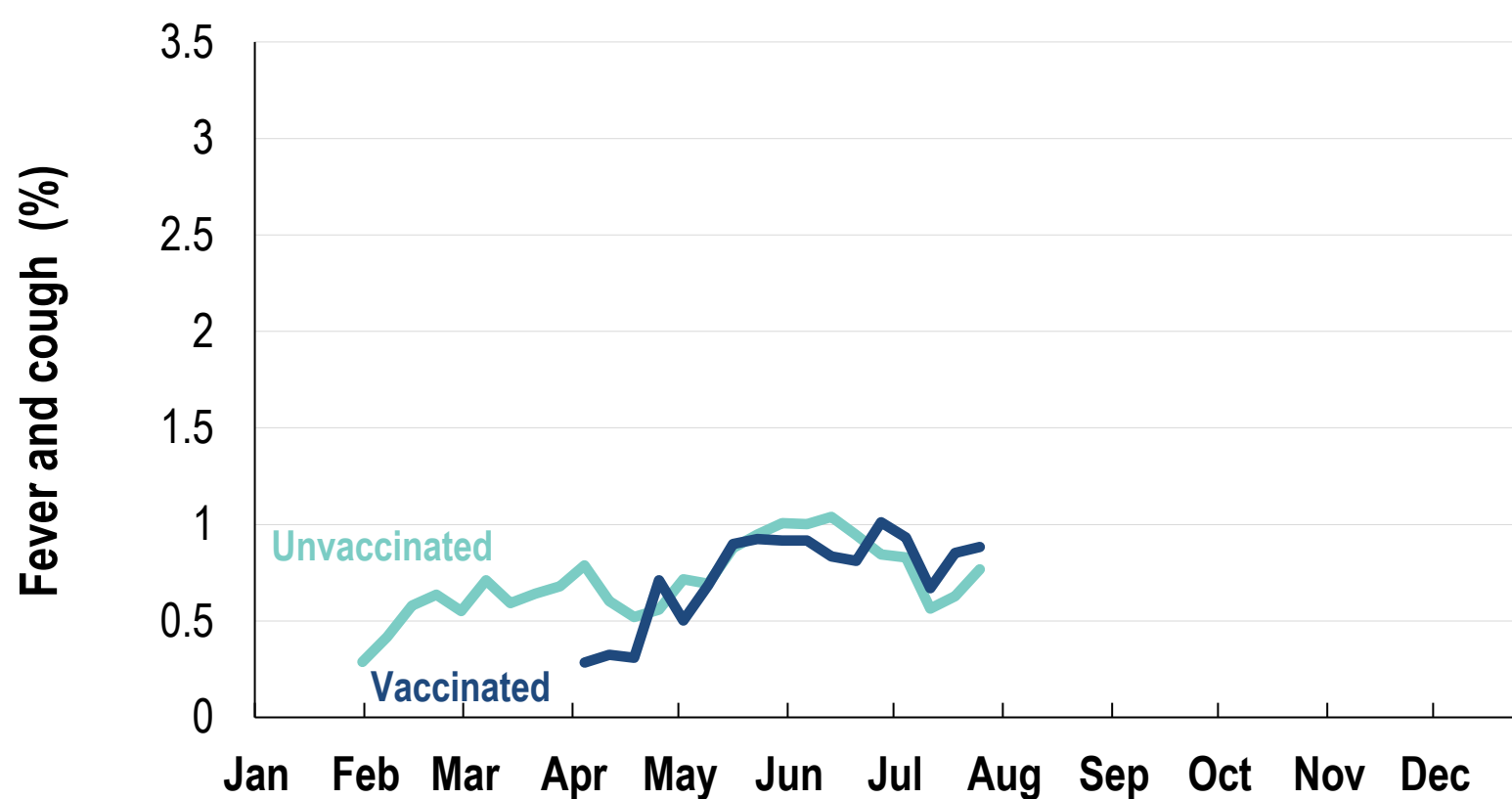


**Participation:**
**66,705 participants (66,540 last week)**

State	Participants	% Rate/100,000 population
NSW	23366	35.0% <b>295.9</b>
VIC	13420	20.1% <b>211.0</b>
QLD	8243	12.4% <b>166.6</b>
SA	5831	8.7% <b>337.7</b>
WA	6711	10.1% <b>259.4</b>
TAS	4266	6.4% <b>817.2</b>
NT	1094	1.6% <b>444.5</b>
ACT	3774	5.7% <b>914.7</b>
AUS	66705	100.0% <b>270.0</b>

**Vaccination rates:**
**Vaccinated participants:**

	COVID-19 vaccine		Influenza (%)
	At least 1 dose (%)	2 doses (%)	
<5 years			51.8
5-17 years	1.2	0.6	35.3
18-64 years	72.9	40.5	70.4
65+ years	92.9	46.5	89.5
Working with patients	90.4	73.8	83.2
Aboriginal and/or Torres Strait Islander	51.4	31.8	62.8
<b>Vaccinated overall (%)</b>	<b>71.8</b>	<b>38.2</b>	<b>73.0</b>



\* Data are age standardised in this chart

^2021 Influenza vaccination data not available until 04/04/21 due to low counts

