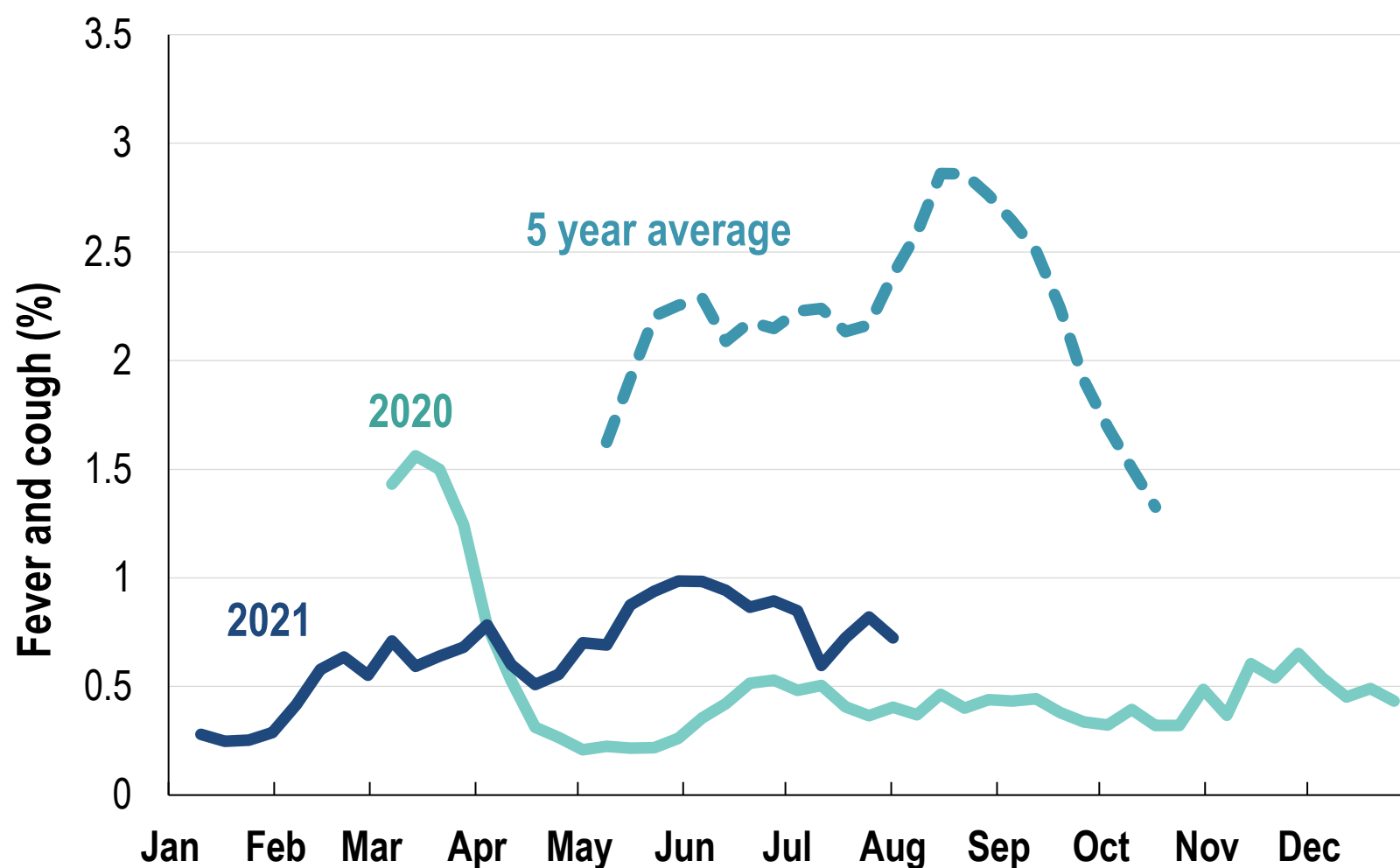


This week influenza-like illness activity is low
66,404 participants this week

Influenza-like illness activity*:

*Influenza-like illness activity is defined as fever & cough for this report

0.7% this week: flu-like illness activity is low

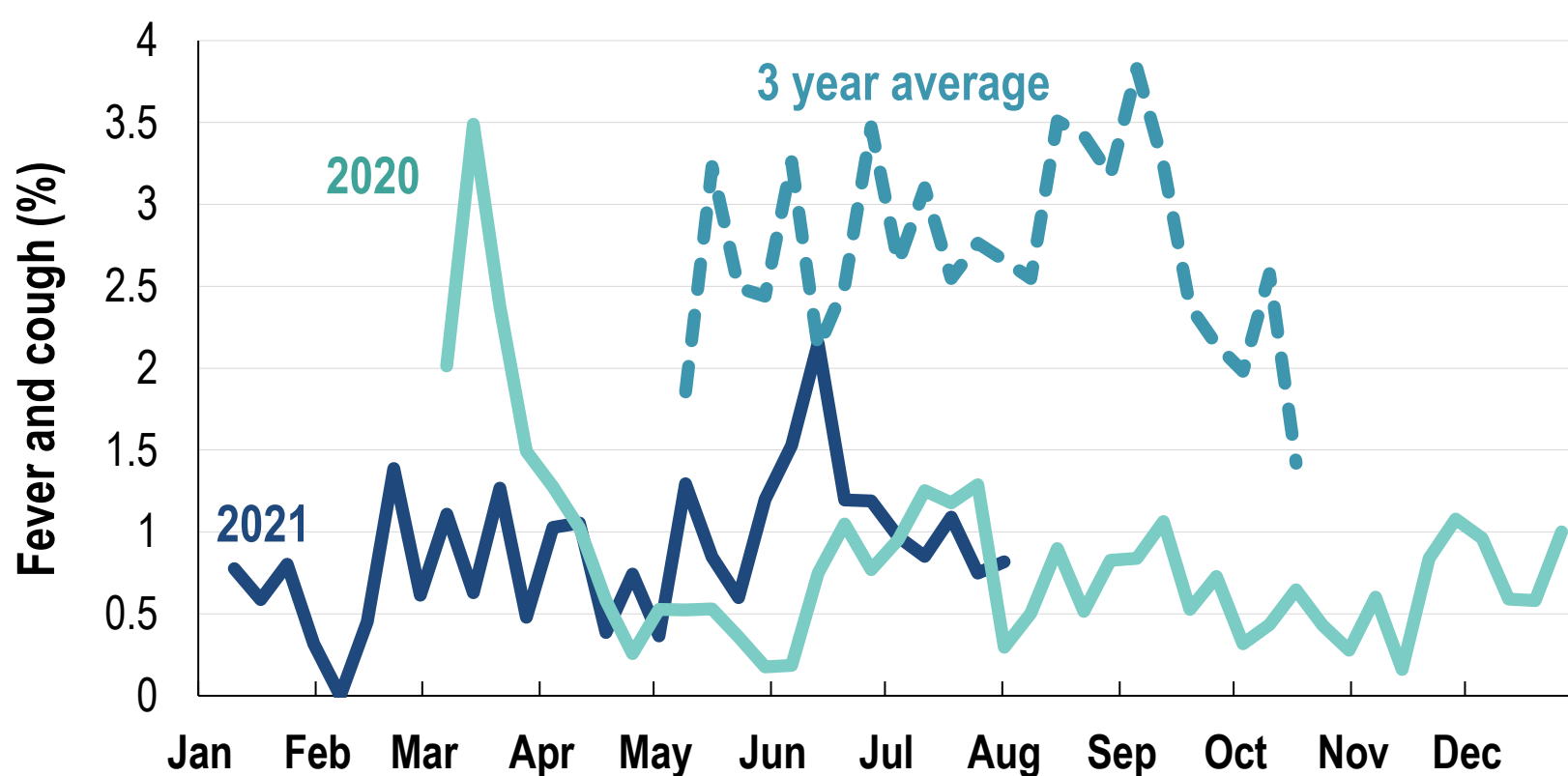


*5 year average is calculated using 2015, 2016, 2017, 2018 and 2019 data

^ Data are age standardised in this chart

Influenza-like illness activity among Aboriginal and Torres Strait Islander participants

0.8% this week: flu-like illness activity is low



*Average Number of Aboriginal and Torres Strait Islander Participants = 732

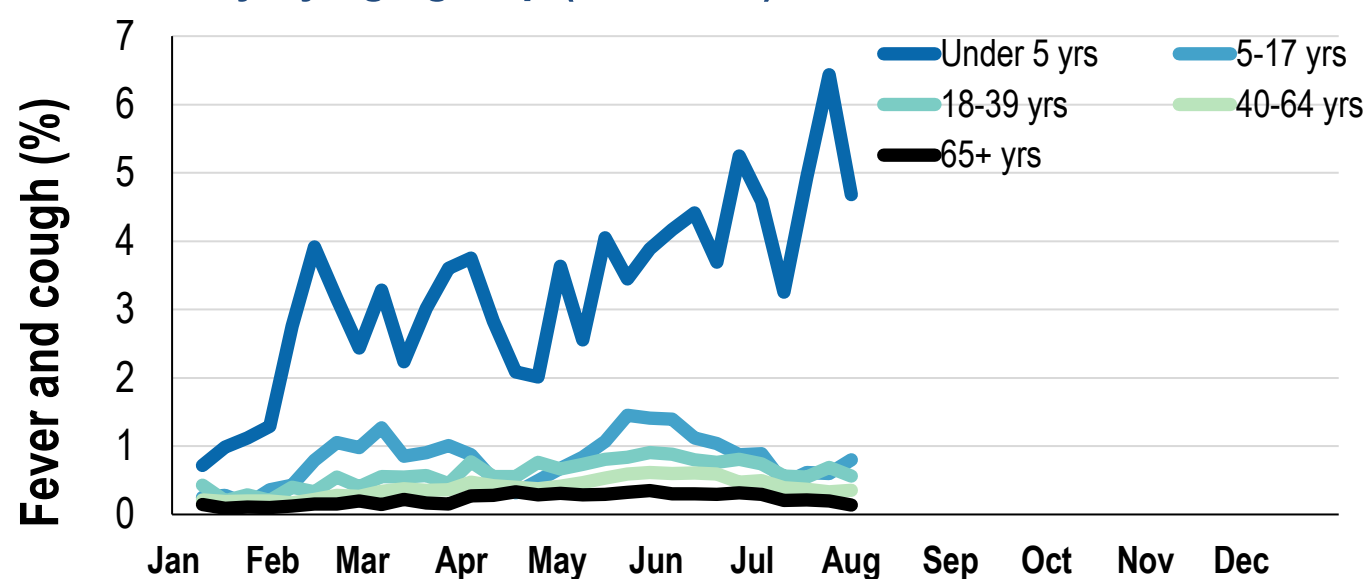
^3 year average is calculated using 2017, 2018 and 2019 data

Influenza-like illness severity: <i>55.9% of participants with fever and cough sought medical advice this week</i>		
Influenza-like illness Severity	Week ending 01 August 2021 number (%)	Week ending 25 July 2021 number (%)
Number of participants	66404 (100%)	66705 (100%)
Fever & cough	279 (0.4%)	306 (0.5%)
Fever, cough & time-off normal duties	188 (0.3%)	232 (0.3%)
Fever, cough & 3 or more days off work/normal duties	92 (0.1%)	147 (0.2%)
Number of participants with fever and cough	279 (100%)	306 (100%)
*Sought medical advice for fever and cough	156 (55.9%)	198 (64.7%)
Admitted to hospital	3 (1.1%)	3 (1%)
Tested for influenza	31 (11.1%)	31 (10.1%)
Tested, result positive for influenza	1 (0.4%)	2 (0.7%)
Tested for coronavirus (COVID-19)	123 (44.1%)	161 (52.6%)
Tested, result positive for coronavirus (COVID-19)	0 (0%)	0 (0%)

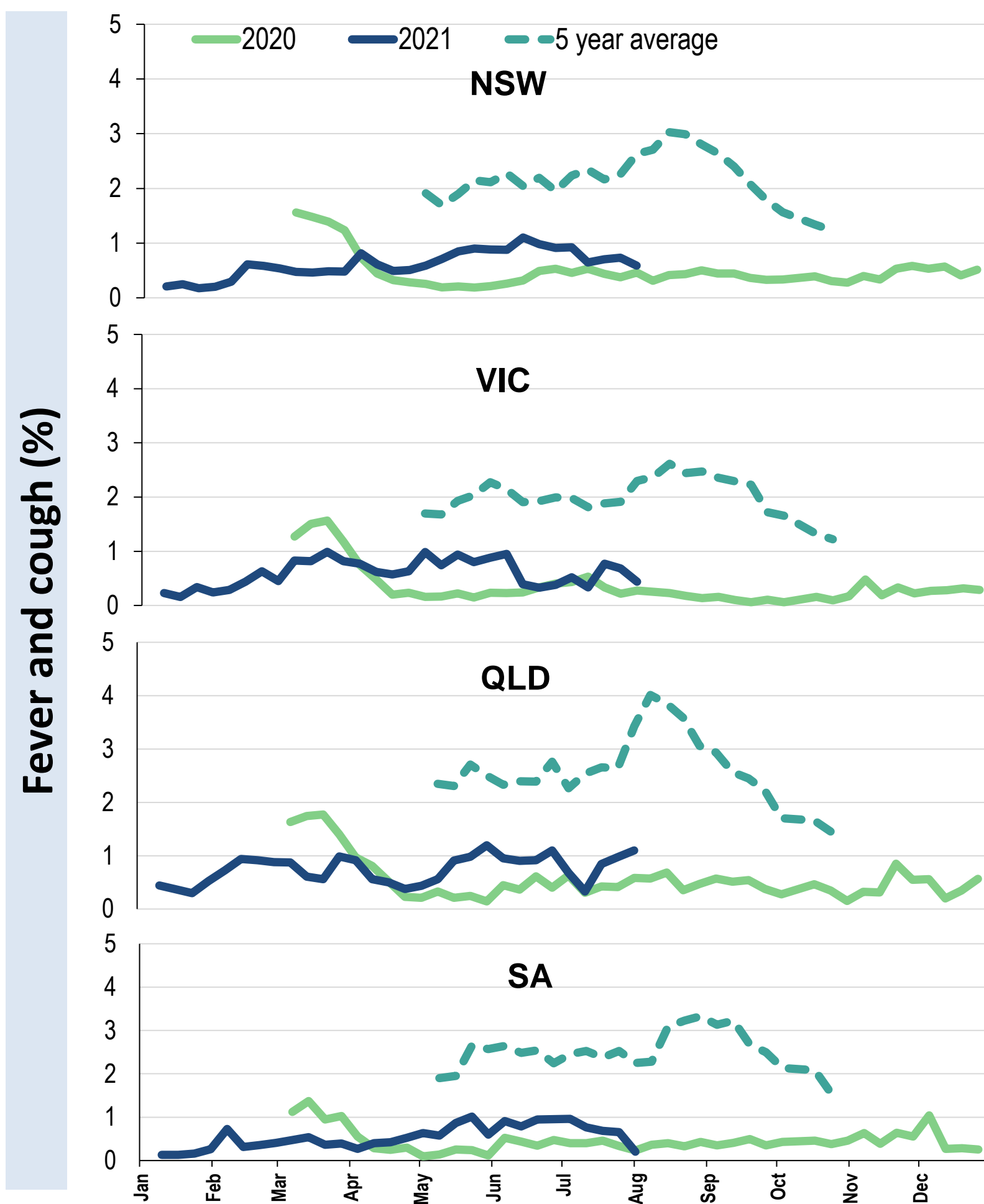
*Includes those who sought medical advice from a general practitioner, COVID-19 clinic, emergency department, or were admitted to hospital for fever & cough



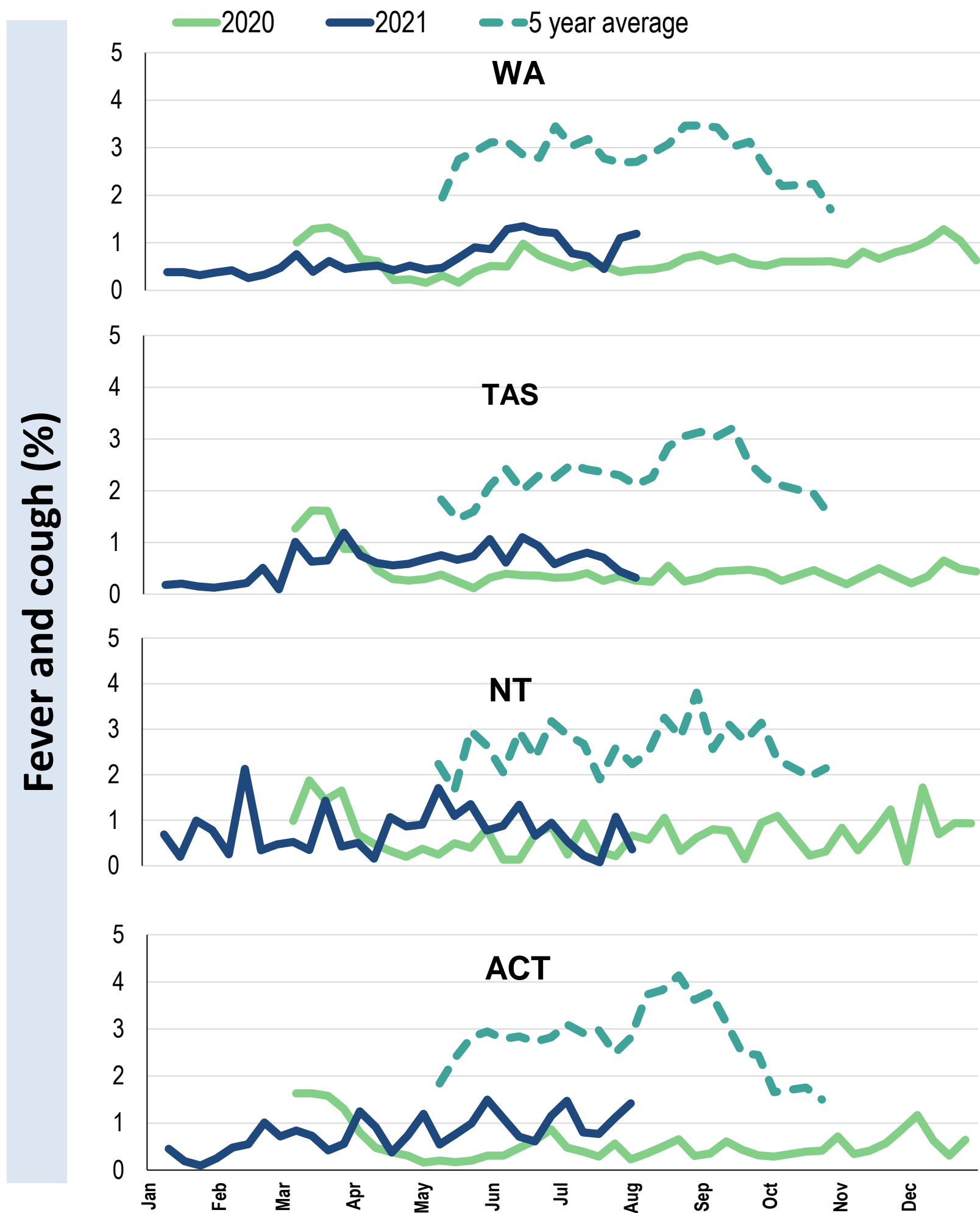
Influenza-like illness activity by age group (Australia):



Influenza-like illness activity by state/territory (age standardised):



Influenza-like illness activity by state/territory (age standardised):

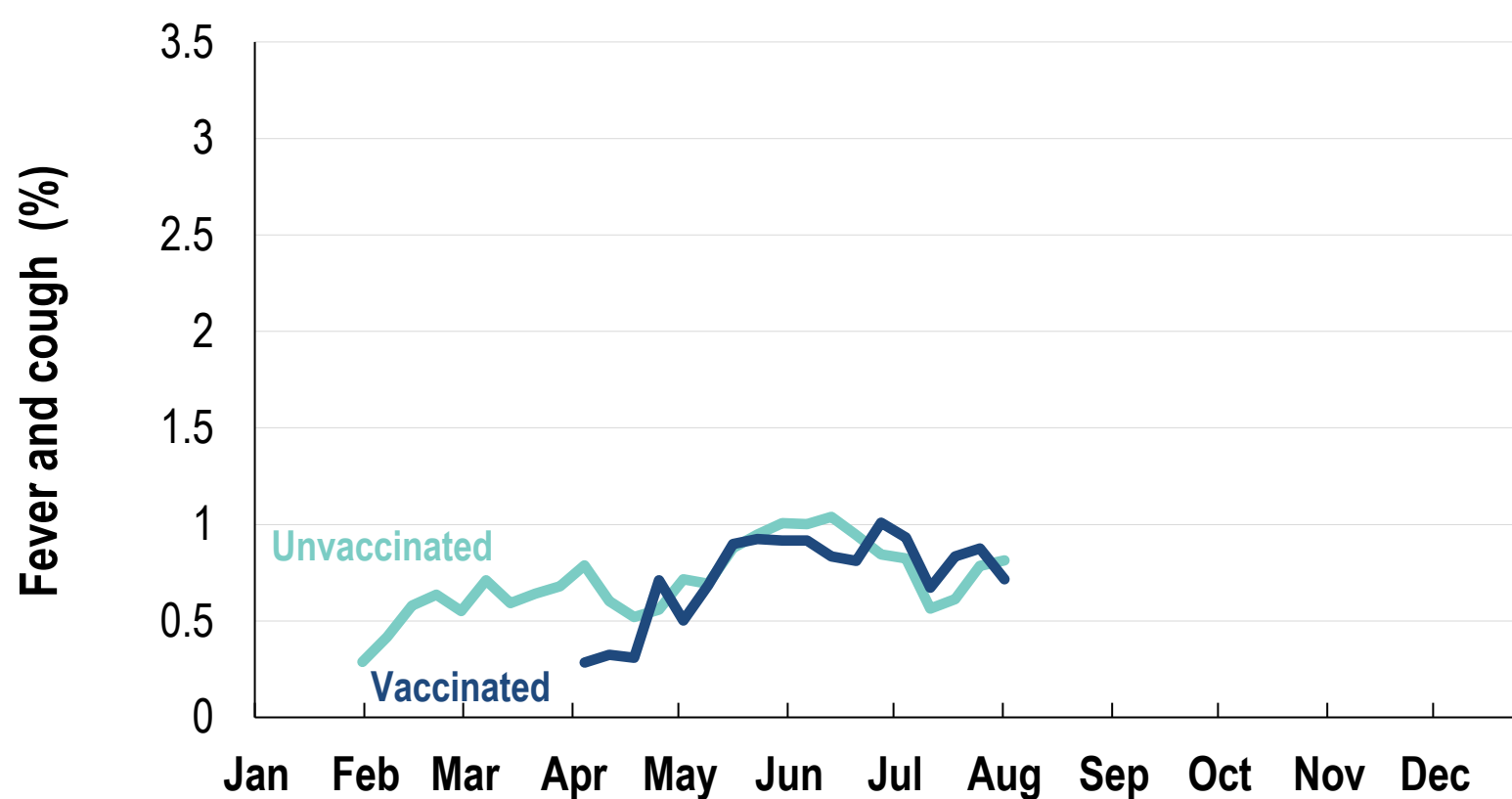


Participation:
66,404 participants (66,705 last week)

State	Participants	%	Rate/100,000 population
NSW	23366	35.2%	295.9
VIC	13273	20.0%	208.7
QLD	8271	12.5%	167.1
SA	5779	8.7%	334.6
WA	6623	10.0%	256.0
TAS	4264	6.4%	816.9
NT	1058	1.6%	429.9
ACT	3770	5.7%	913.7
AUS	66404	100.0%	268.8

Vaccination rates:
Vaccinated participants:

	COVID-19 vaccine		Influenza (%)
	At least 1 dose (%)	2 doses (%)	
<5 years			53.5
5-17 years	1.3	0.7	36.3
18-64 years	75.8	45.9	70.8
65+ years	93.7	54.1	89.8
Working with patients	91.4	76.7	83.4
Aboriginal and/or Torres Strait Islander	54.6	36.9	61.4
Vaccinated overall (%)	73.8	43.8	73.6



* Data are age standardised in this chart

^2021 Influenza vaccination data not available until 04/04/21 due to low counts

